

LOCATION MAP  
SCALE 1"=2000'

### APPROACHES

ALL APPROACHES TO THE COUNTY ROAD SHALL BE PROVIDED WITH ADEQUATE DRAINAGE CULVERTS. CULVERTS SHALL BE A MINIMUM OF 18" IN DIAMETER AND 20 FEET IN LENGTH. APPROACHES SHALL BE APPROVED BY THE COUNTY ROAD DEPARTMENT.

### EASEMENTS

EASEMENTS OF 10 FEET ON EACH SIDE OF THE PROPERTY LINES ARE HEREBY RESERVED FOR POLES, WIRES, PIPES AND CONDUITS FOR HEATING, LIGHTING, ELECTRICITY, GAS, TELEPHONE, SEWER, WATER OR OTHER PUBLIC, CABLE TELEVISION OR QUASI PUBLIC UTILITY SERVICE PURPOSES, TOGETHER WITH THE RIGHT OF ENTRY AT ANYTIME FOR THE PURPOSE OF FURTHER CONSTRUCTION AND REPAIR.

### SURVEYOR'S CERTIFICATE

I, WALTER J. PILCH, A DULY REGISTERED LAND SURVEYOR IN THE STATE OF WYOMING, DO HEREBY CERTIFY THAT THIS MAP TRULY AND CORRECTLY REPRESENTS THE RESULTS OF A SURVEY MADE BY ME OR UNDER MY DIRECT SUPERVISION.

WALTER J. PILCH  
WYOMING R.E. & L.S. NO. 537

### PLANNING COMMISSION APPROVAL

APPROVED BY THE SHERIDAN COUNTY PLANNING COMMISSION THIS 11<sup>TH</sup> DAY OF AUGUST, 1977.

ATTEST:

Milton M. Mendenhall  
SECRETARY

### COUNTY COMMISSIONER'S APPROVAL

APPROVED BY THE SHERIDAN COUNTY BOARD OF COUNTY COMMISSIONERS THIS 11<sup>TH</sup> DAY OF AUGUST, 1977.

ATTEST:

Margaret Lewis  
CLERK OF THE BOARD

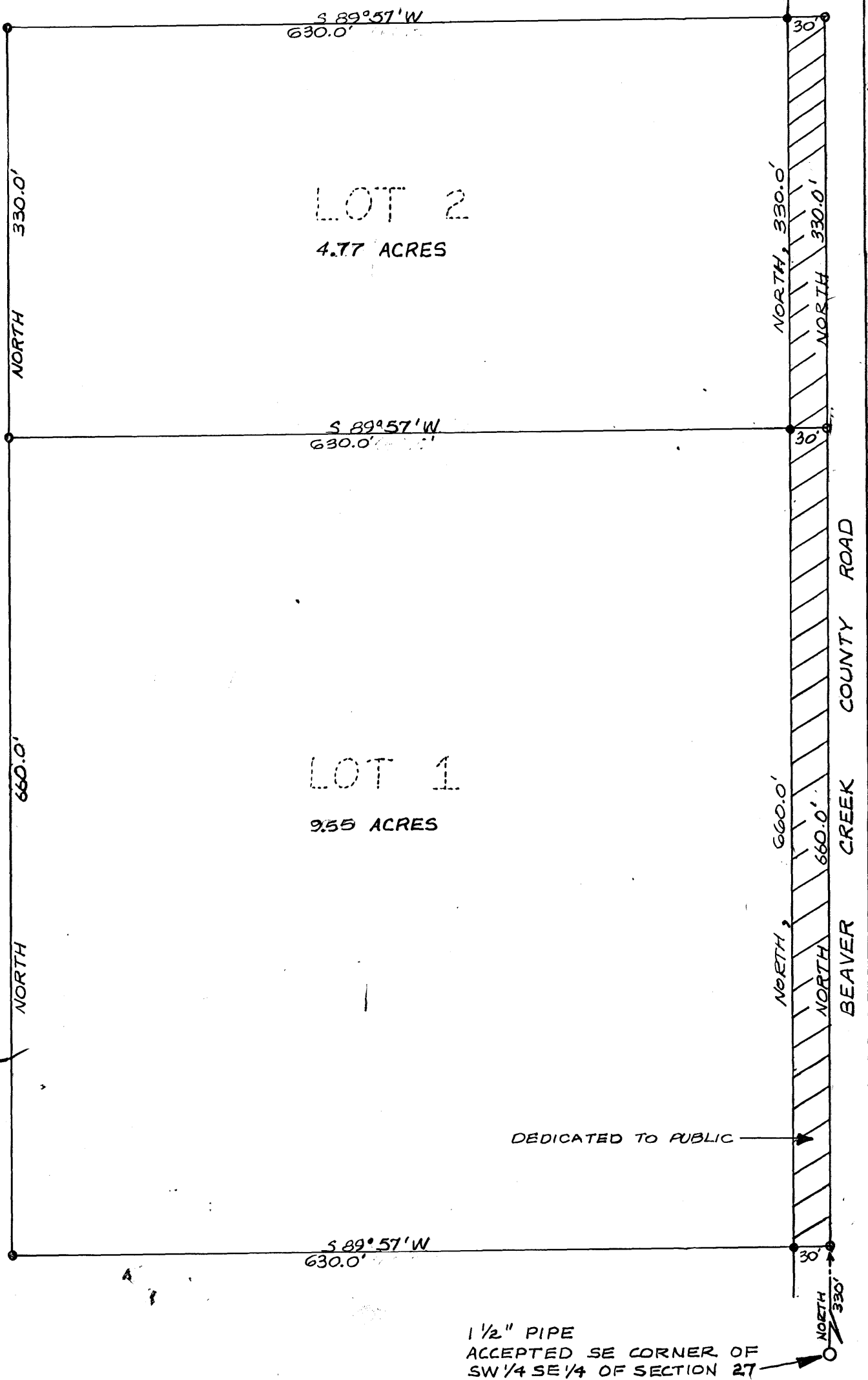
William J. Lays  
CHAIRMAN OF THE BOARD

### DESCRIPTION

A TRACT OF LAND LOCATED IN THE SW 1/4 SE 1/4 OF SECTION 27, T 55 N, R 85 W, SHERIDAN COUNTY WYOMING, DESCRIBED AS FOLLOWS:

BEGINNING AT A POINT LOCATED IN THE CENTER OF A COUNTY ROAD, SAID POINT BEING LOCATED NORTH, 330 FEET FROM THE SE CORNER OF THE SW 1/4 SE 1/4 OF SAID SECTION 27; THENCE S 89°57'W, 660 FEET TO A POINT; THENCE NORTH 990 FEET TO A POINT; THENCE N 89°57'E, 660 FEET TO A POINT IN THE CENTER OF A COUNTY ROAD, SAID POINT BEING LOCATED ON THE EAST LINE OF SAID SW 1/4 SE 1/4; THENCE ALONG THE EAST LINE OF SAID SW 1/4 SE 1/4, SOUTH 990 FEET TO THE POINT OF BEGINNING.

# 5 REBARS AT  
CORNERS



### CERTIFICATE OF DEDICATION

THE ABOVE OR FOREGOING SUBDIVISION OF LANDS LOCATED IN SECTION 27, T 55 N, R 85 W, AS APPEARS ON THIS PLAT, IS WITH THE FREE CONSENT, AND IN ACCORDANCE WITH THE DESIRES OF THE UNDERSIGNED OWNERS AND PROPRIETORS, CONTAINING 15 ACRES MORE OR LESS. BEAVER CREEK COUNTY ROAD IS HEREBY DEDICATED FOR PUBLIC USE; HERE BY RELEASING & WITNESS OUR HANDS AND SEALS THIS 11<sup>TH</sup> DAY OF Aug. 1977

Gerald T. Powers  
Geneva Powers

STATE OF WYOMING ) SS  
COUNTY OF SHERIDAN )

THE FOREGOING INSTRUMENT WAS ACKNOWLEDGED BEFORE ME BY: Gerald T. Powers & Geneva Powers  
THIS 11<sup>TH</sup> DAY OF August, 1977. WITNESS MY HAND AND OFFICIAL SEAL.

MY COMMISSION EXPIRES May 20, 1981 Mabelle A. Luff Notary Public

### CERTIFICATION OF RECORDER

STATE OF WYOMING ) SS  
COUNTY OF SHERIDAN )

I HEREBY CERTIFY THAT THIS PLAT WAS FILED FOR RECORD IN MY OFFICE AT 1:35 PM, THIS 11<sup>TH</sup> DAY OF August, 1977, AND RECORDED IN PLAT BOOK NO. 183 ON PAGE 183.

Margaret Lewis  
COUNTY CLERK

DEPUTY

### POWERS MINOR SUBDIVISION

BEING A SUBDIVISION IN SW 1/4 SE 1/4

SECTION 27, T 55 N, R 85 W

SHERIDAN COUNTY, WYOMING

SCALE 1"=100'  
WALTER J. PILCH AND ASSOCIATES