

HALL MINOR SUBDIVISION
A SUBDIVISION OF LOTS 12, 13 AND 14, BLOCK 14,
Amended Plat Of Parts Of Blocks 2, 3, 5, 6, 9, 10, 13, 14, 17 & 18 In Coffeen's Second Addition
TO THE CITY OF SHERIDAN, WYOMING

DIRECTOR OF PUBLIC WORKS

This plat has been prepared in accordance with the requirements and procedures outlined in the Sheridan Regulations of the City of Sheridan, and certify this 31st day of May, 2006, by the Director of Public Works of Sheridan, Wyoming.

Jackie Jones
Director of Public Works

SHERIDAN PLANNING COMMISSION

Reviewed by the City of Sheridan Planning Commission this 31st day of May, 2006.

Mary Wood
Chairman

Mike Burt
Attest: Vice-Chairman

CITY COUNCIL OF SHERIDAN

The certificate of approval by the City Council of Sheridan shall read as follows:

Approved by the City Council of the City of Sheridan, Wyoming, this 5th day of June, 2006.

Bob Kury
Mayor

John Hall
Attest: City Clerk

CERTIFICATE OF RECORDER

The certificate for recording by the County Clerk and Recorder shall read as follows:

This plat was filed for record in the Office of the Clerk and Recorder at 4:30 o'clock P.m., JUNE 6, 2006, and is duly recorded in Book H, Page No. 54. (or as Plat No. H-54)

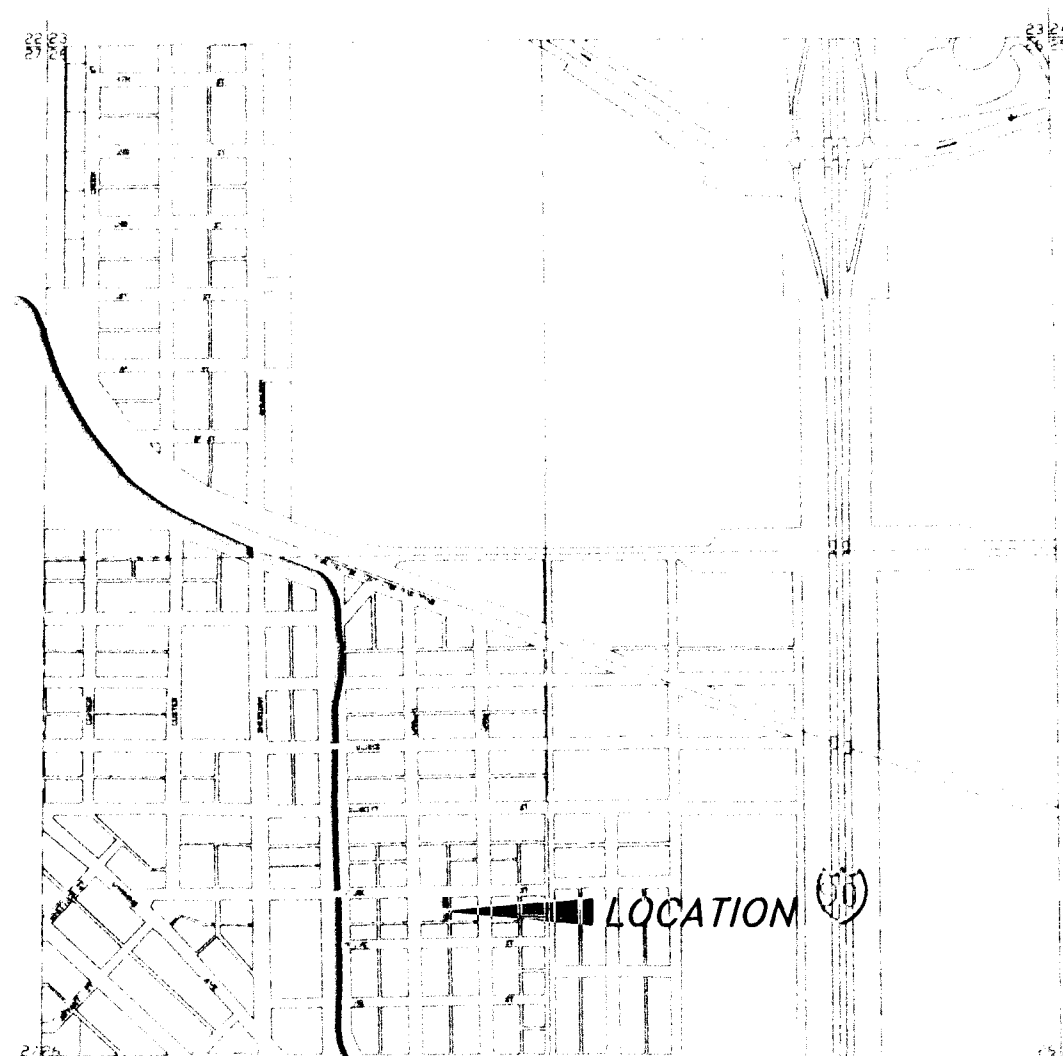
Cindy Kalliska
County Clerk

CERTIFICATE OF SURVEY

I, William E. Pugh, do hereby certify that I am a Registered Land Surveyor, licensed under the laws of the State of Wyoming, that this plat is a true, correct plat of Hall Minor Subdivision, a Resubdivision of Lots 12, 13 and 14, Block 14, Amended Plat Of Parts Of Block 2, 3, 5, 6, 9, 10, 13, 14, 17 & 18 In Coffeen's Second Addition to the City of Sheridan, as laid out, platted, dedicated and shown hereon, that this plat was made from an accurate survey of said property conducted by me or under my supervision and correctly shows the location and dimensions of all lots, easements and streets of said subdivision in compliance with City Sheridan regulations governing the subdivision of land.



UNLESS SIGNED, SEALED AND THIS IS A PRELIMINARY



LOCATION MAP

CERTIFICATE OF DEDICATION

That the undersigned owner(s) of the land shown and described and as it appears on this plat does (do) hereby dedicate to the City of Sheridan and its licensees for public use for the indicated purposes, all streets, alleys, easements and other public lands within the boundary lines of the plat, as indicated, and not already otherwise dedicated for public use. Utility easements, as designated on this plat, are hereby dedicated to the City of Sheridan and its licensees for public use for the purpose of installing, repairing, reinstalling, replacing and maintaining sewers, water lines, gas lines, electric lines, telephone lines, cable TV lines and other forms and types of public utilities now or hereafter generally utilized by the public.

All rights under and by virtue of the homestead exemption laws of the State of Wyoming are hereby waived and released. Executed this 24th day of May, 2006.

Owner

Diane Michael

Owner
STATE OF WYOMING)

COUNTY OF SHERIDAN) ss

The foregoing instrument was acknowledged before me this 24th day of May, 2006

My Commission Expires: 4/26/07

Maurice H. Segerski
Notary Public

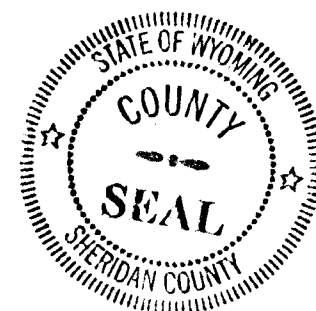
STATE OF WYOMING)

COUNTY OF SHERIDAN) ss

The foregoing instrument was acknowledged before me this 24th day of May, 2006

My Commission Expires: 4/26/07

Maurice H. Segerski
Notary Public

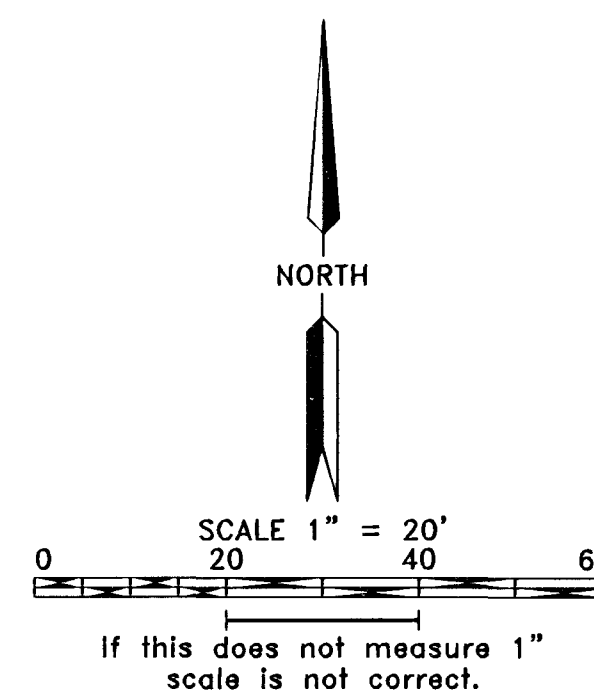
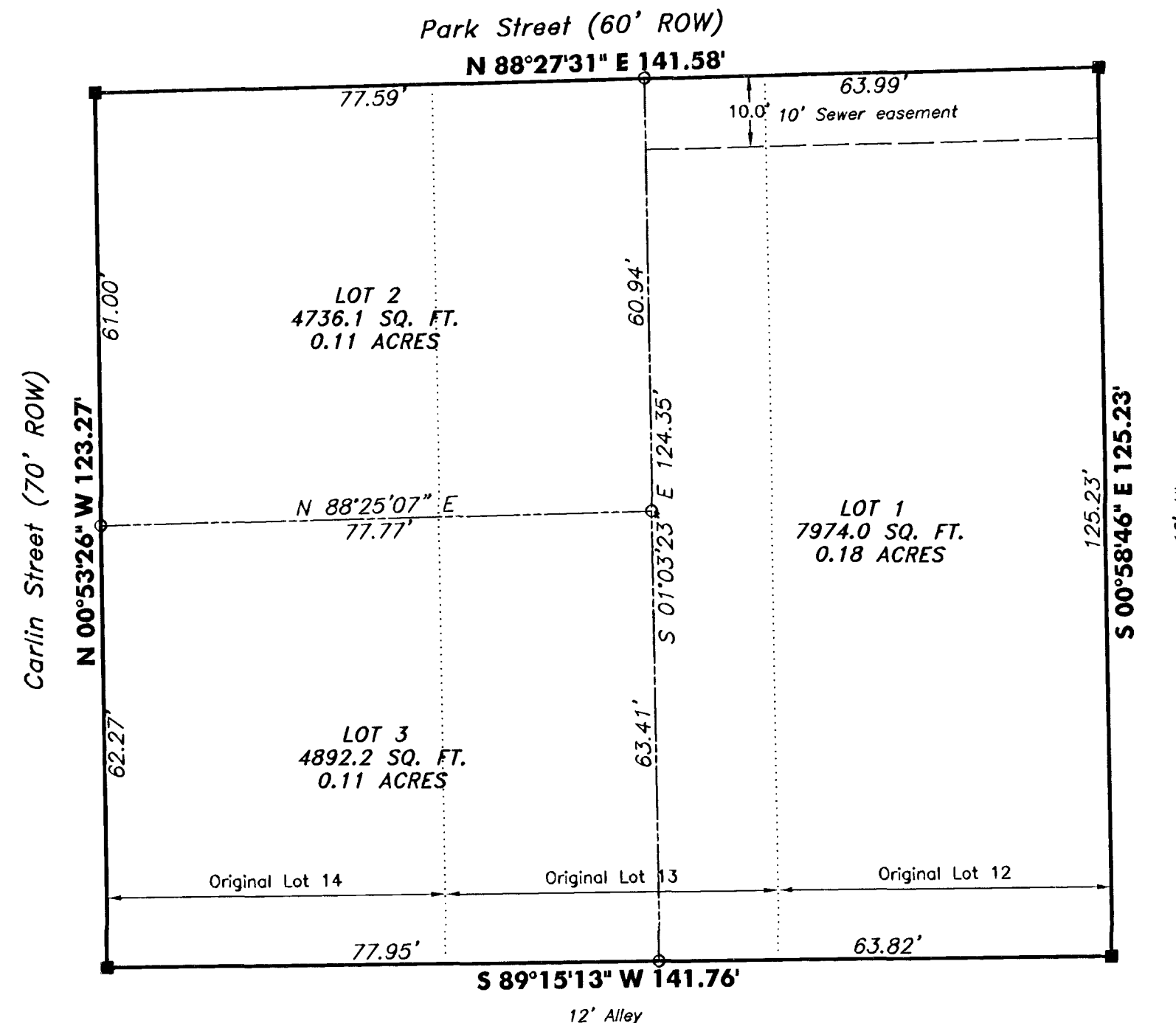


LEGAL DESCRIPTION

BEING Lots 12, 13 and 14, Block 14, Amended Plat Of Parts Of Blocks 2, 3, 5, 6, 9, 10, 13, 14, 17 & 18 In Coffeen's Second Addition To The City Of Sheridan, Wyoming.

DECLARATION TO VACATE

This plat is the re-subdivision of Lots 12, 13 and 14, Block 14, Amended Plat Of Parts Of Block 2, 3, 5, 6, 9, 10, 13, 14, 17 & 18 In Coffeen's Second Addition to the City of Sheridan, Wyoming, as, recorded in Drawer C, Plat 4 of the records of the Sheridan County Clerk. All earlier plats or portions thereof encompassed by the boundaries of this plat are hereby vacated.



LEGEND

These standard symbols will be found in the drawing.

- Set this Survey 36"x5/8" Rebar w/ 2" Alum cap "CER RLS 5300"
- Existing Monument
- Subdivision Boundary
- Lot Line

NOTES:

Basis of bearing: NAD 83
Wyoming East Central Zone

Zoning Classification: R-2

Current Flood Zone Category: X
Community-Panel No. (5600044 0005 D)
Map Revised January 19, 2001