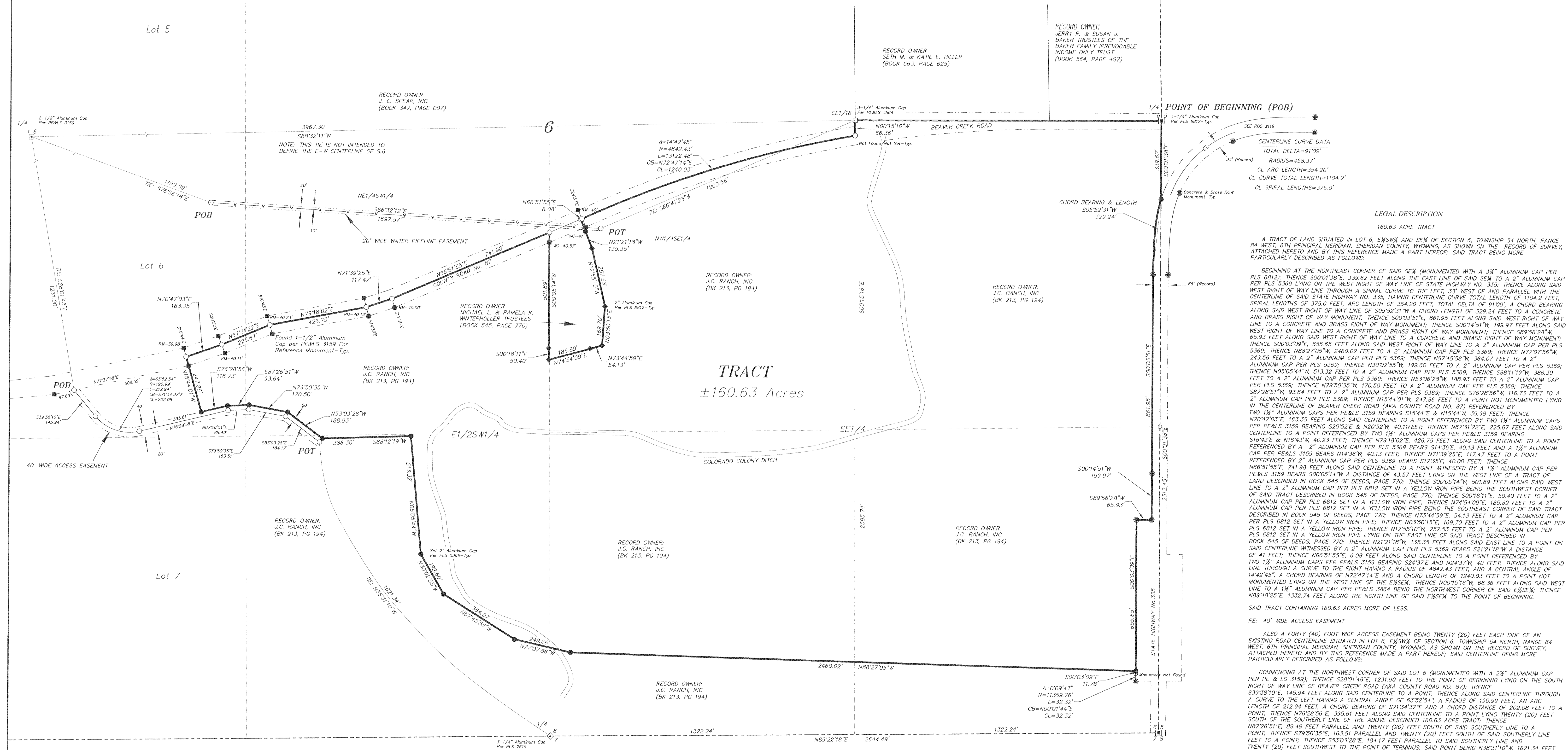


RECORD OF SURVEY

SURVEY OF A ±160.63 AC. TRACT OF LAND IN THE SE1/4, E1/2SW1/4, SECTION 6, TOWNSHIP 54 NORTH, RANGE 84 WEST, 6TH PM, SHERIDAN COUNTY, WY.



SCALE: 1" = 200'
BEARINGS ARE BASED ON THE
WYOMING COORDINATE SYSTEM NAD 1983, EAST CENTRAL ZONE
DAF=1.000246811 DIVIDE SURFACE DISTANCES BY THE DAF TO CALCULATE
CALCULATE STATE PLANE DISTANCES

CERTIFICATE OF RECORDER

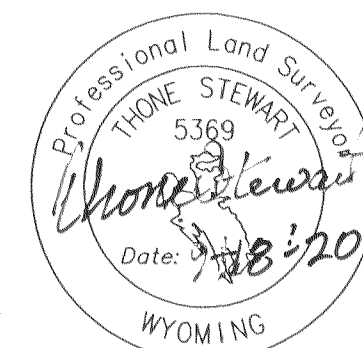
STATE OF WYOMING : ss
COUNTY OF SHERIDAN

THIS PLAT WAS FILED FOR RECORD IN THE OFFICE OF THE CLERK AND RECORDER AT 12:26 O'CLOCK P.M.,
THIS 18 DAY OF September, 20 20, AND IS DULY RECORDED IN PLAT BOOK A, PAGE 605
FEE \$50.00

Eda Schunk Thompson
COUNTY CLERK

STAMP RECEIVING NUMBER 2020-762086

I, THONE STEWART, A DULY REGISTERED LAND SURVEYOR
IN THE STATE OF WYOMING, DO HEREBY STATE THAT THIS
PLAT REPRESENTS THE RESULTS OF A SURVEY MADE BY
ME OR UNDER MY DIRECT SUPERVISION.



NOTICE
This plat is an image, or reproduction of the original as is recorded in the
Sheridan County Clerk's Office. It is not a certified, complete or
authoritative depiction of current property lines, easements or rights-of-
way. Delineations, measurement or representations may have occurred
since the original plat was recorded.

RECORD OF SURVEY

SITUATED IN SE1/4, E1/2SW1/4, SECTION 6, TOWNSHIP 54 NORTH, RANGE 84
WEST, 6TH PRINCIPAL MERIDIAN, SHERIDAN COUNTY, WYOMING

CLIENT: JC RANCH, INC.

RESTFELDT
SURVEYING
2340 WETLANDS DR., SUITE 100
PO BOX 3082
SHERIDAN, WY 82801
307-672-7415

JN: 2020-051
DN: 2020-051D
TBC: T2020-051
SEPTEMBER, 2020

#605