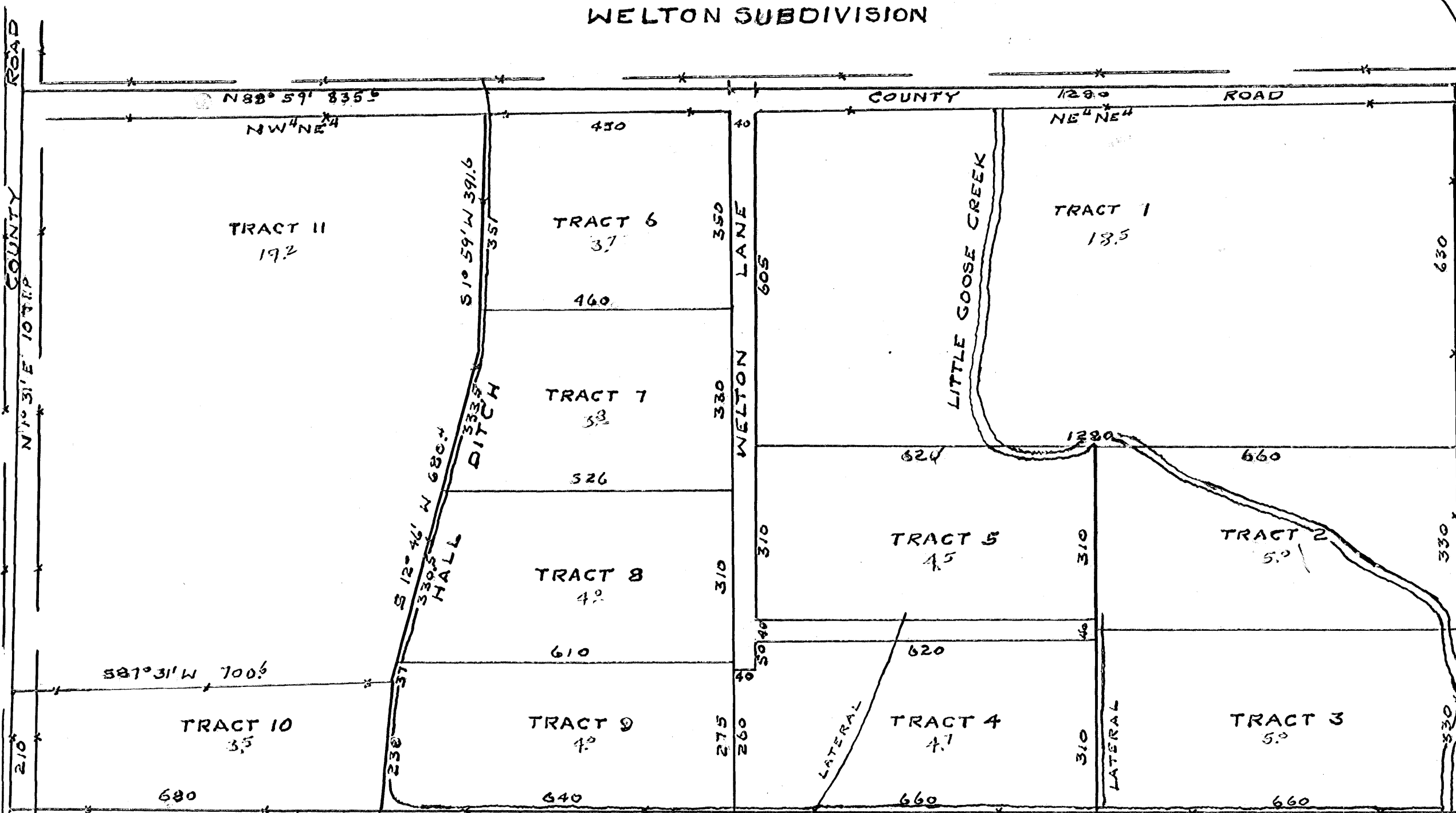


WELTON SUBDIVISION



CERTIFICATE of SURVEYOR

STATE of WYOMING, COUNTY of SHERIDAN, SS.
THIS IS TO CERTIFY THAT I, N.V. KURTZ, A
LICENSED SURVEYOR OF THE STATE OF WYOMING
DID ON APRIL 12, 1954, SURVEY INTO ELEVEN TRACTS
WELTON SUBDIVISION AS SHOWN BY THIS PLAT, AND
THAT THIS PLAT REFLECTS THE CORRECT DELINEAT-
ION OF SAID SURVEY.

N.V. Kurtz, SURVEYOR.

SUBSCRIBED AND SWORN TO BEFORE ME APRIL 15, 1954.

By Samuel expires July 13, 1955

NOTARY PUBLIC.

FILED FOR RECORD APRIL 15, 1954
AND DULY FILED IN BOOK 2 OF PLAT
RECORDS ON PAGE 42.

362565

B.B. Buene
COUNTY CLERK.

Partial Vacation 1-10-06 BK 4-10 Pg 519

CERTIFICATE of DEDICATION

STATE of WYOMING, COUNTY of SHERIDAN, SS.

WE, THE UNDERSIGNED, DO HEREBY CERTIFY
THAT WE ARE THE OWNERS OF THE N²NE⁴ OF
SECTION 15, TOWNSHIP 33 NORTH, RANGE 84 WEST,
SHERIDAN COUNTY, WYOMING, WHICH IS NOW SUB-
DIVIDED AS SHOWN BY THIS PLAT AND SURVEYOR
CERTIFICATE; AND THAT SAID OWNERS HAVE
CAUSED SAID LANDS TO BE SURVEYED AND PLAT-
TED AS WELTON SUBDIVISION, AND THE ROADS,
DITCHES AND LATERALS SHOWN ON SAID PLAT
ARE HEREBY DEDICATED FOR THE USE OF THE
OWNERS OF SAID LANDS, AND WE ACKNOWLEDGE
THIS PLAT IS MADE AND FILED WITH OUR CONSENT
AND IS IN ACCORD WITH THE DESIRE OF SAID OWNERS.

Lowell Welton
Razel Welton

SUBSCRIBED AND SWORN TO BEFORE ME APRIL 15, 1954.

By Samuel expires July 13, 1955

NOTARY PUBLIC