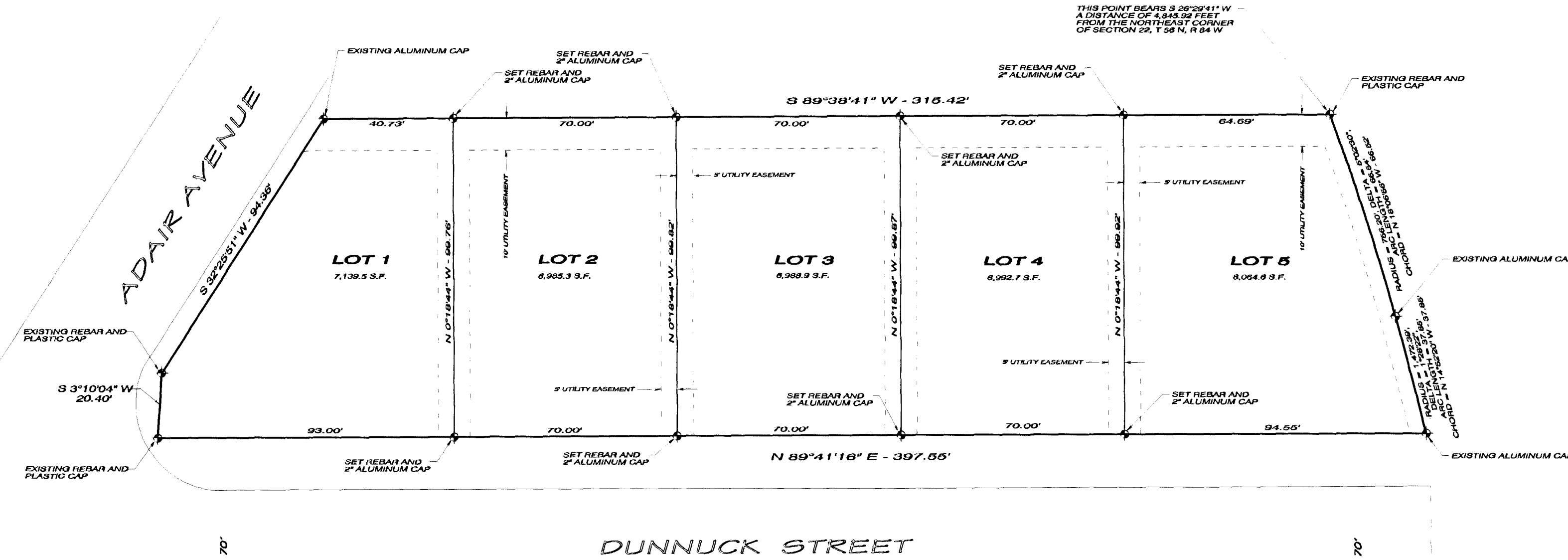
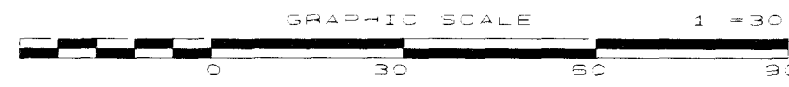
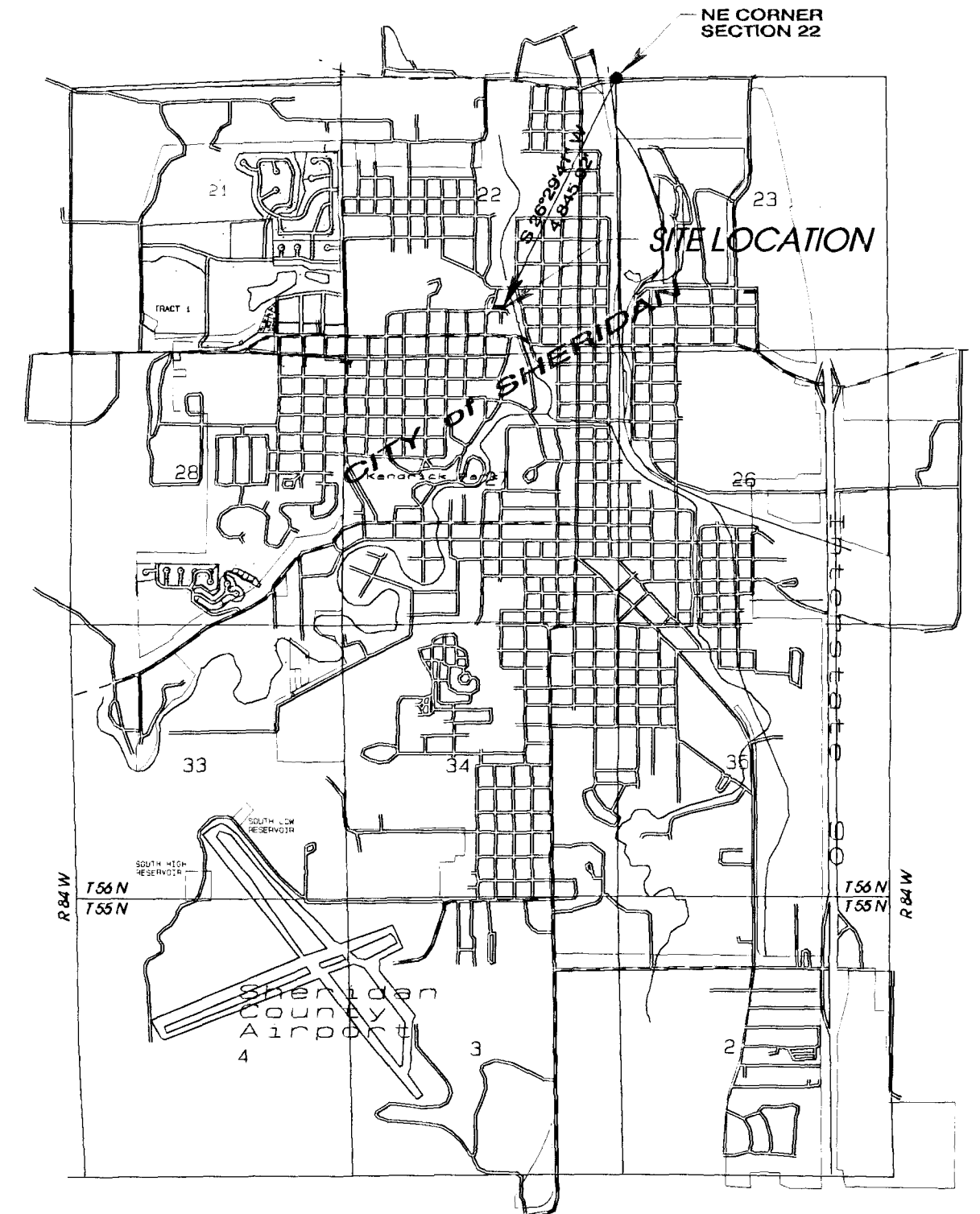


# DETAIL



LOCATION  
SCALE : 1" = 3000'

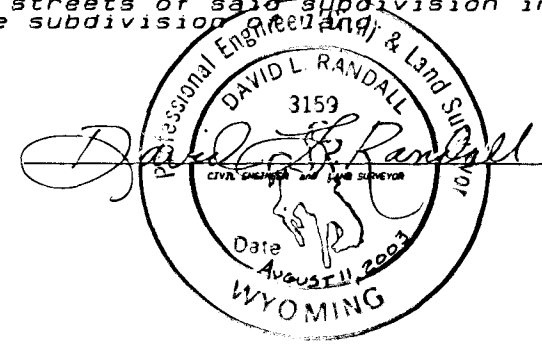


## CERTIFICATE of SURVEYOR

State of Wyoming } ss  
County of Sheridan }

I, David L. Randall, of Sheridan, Wyoming do hereby certify that I am a duly registered Professional Engineer and Land Surveyor, licensed under the laws of the State of Wyoming, that this plat is a true, correct and complete plat of Galloway Subdivision, as laid out, plotted, dedicated and shown hereon, that this plat was made from an accurate survey of said property conducted by me and correctly shows the location and dimensions of all lots, easements and streets of said subdivision in compliance with City of Sheridan regulations governing the subdivision of land.

Registration No. 3159 PE & LS



## CERTIFICATE of OWNERS

Know all men by these presents that the undersigned, Lou Galloway, President of Galloway Construction, Inc., and Linda Galloway, Secretary/Treasurer of Galloway Construction, Inc. Being the owners, proprietors or parties of interest in the land shown on this plat, do hereby certify:  
That the foregoing plat designated as Galloway Subdivision, is located in the SW1/4SE1/4 of Section 22, Township 55 North, Range 84 West of the Sixth Principal Meridian, Sheridan County, Wyoming; being a portion of Lot 1, Block 13 and a portion of Arlington Boulevard (Vacated) all in the Sheridan Land Company's First Addition to the City of Sheridan, Wyoming, this tract more particularly described as follows:  
Beginning at a point which bears S 26°29'41" W a distance of 4,845.92 feet from the Northeast Corner of said Section 22; thence S 89°38'41" W for a distance of 315.42 feet; thence S 32°25'51" W for a distance of 94.36 feet; thence S 3°10'04" W for a distance of 20.40 feet; thence N 89°41'16" E for a distance of 397.55 feet; thence along a curve to the left, this curve having a Radius of 1,472.39 feet, a Central Angle of 1°28'22", an Arc Length of 37.85 feet and a Chord with bearing of N 14°52'20" W with a Chord distance of 37.85 feet; thence along a curve to the left, this curve having a radius of 756.20 feet, a Central Angle of 5°02'30", an Arc Length of 66.54 feet and a Chord with bearing of N 18°06'56" W with a Chord distance of 66.52 feet to the point of beginning. Said tract of land contains 0.83 of an acre.

That this subdivision, as it is described and as it appears on this plat, is made with the free consent and in accordance with the desires of the undersigned owners and proprietors, and that this is a correct plat of the area as it is divided into lots, blocks, streets and easements, and

That the undersigned owners of the land shown and described on this plat do hereby dedicate to the City of Sheridan and its licensees for public use for the indicated purposes, all streets, alleys, easements and other public lands within the boundary lines of the plat, as indicated, and not already otherwise dedicated for public use.

Utility easements, as designated on this plat, are hereby dedicated to the City of Sheridan and its licensees for public use for the purpose of installing, repairing, reinstalling, replacing and maintaining sewers, water lines, gas lines, electric lines, telephone lines, cable TV lines and other forms and types of public utilities now or hereafter generally utilized by the public.

All rights under and by virtue of the homestead exemption laws of the State of Wyoming are hereby waived and released.

## DIRECTOR of PUBLIC WORKS CERTIFICATE of APPROVAL

Data on this plat approved this 18<sup>th</sup> day of September, 2003, by the Director of Public Works of Sheridan, Wyoming

*Jackie Power*  
DIRECTOR OF PUBLIC WORKS

## CITY of SHERIDAN PLANNING COMMISSION CERTIFICATE of REVIEW

Reviewed by the City of Sheridan Planning Commission this 22<sup>nd</sup> day of Sept., 2003.

*Wayne Blank*  
VICE CHAIRMAN

*Mary Weller*  
CHAIRMAN

## CITY of SHERIDAN CERTIFICATE of APPROVAL

Approved by the City Council of Sheridan, Wyoming, this 22<sup>nd</sup> day of September, 2003.

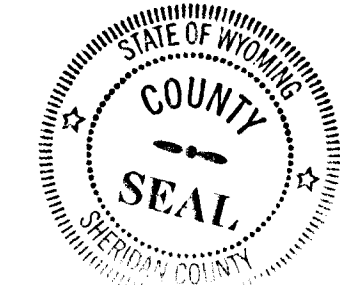
*Cathy Hill* *Jim Wilson*  
ALDERMAN CITY CLERK MAYOR

## CERTIFICATE of RECORDER

State of Wyoming } ss  
County of Sheridan }

This plat was filed for record in the Office of the Clerk and Recorder at 1:00 o'clock P.M. on this 24<sup>th</sup> day of Sept., 2003, and is duly recorded in Book 6, Page No. 14.

*Audrey Kattiska*  
CLERK



## FINAL PLAT

## GALLOWAY SUBDIVISION

of the  
being a portion of  
**LOT 1, BLOCK 13**  
and a portion of  
**ARLINGTON BOULEVARD (VACATED)**  
of the

**SHERIDAN LAND COMPANY'S FIRST ADDITION**  
**CITY of SHERIDAN**  
**SHERIDAN COUNTY, WYOMING**

for  
**GALLOWAY CONSTRUCTION, INC.**

1290 SUGARVIEW DRIVE  
SHERIDAN, WYOMING 82801