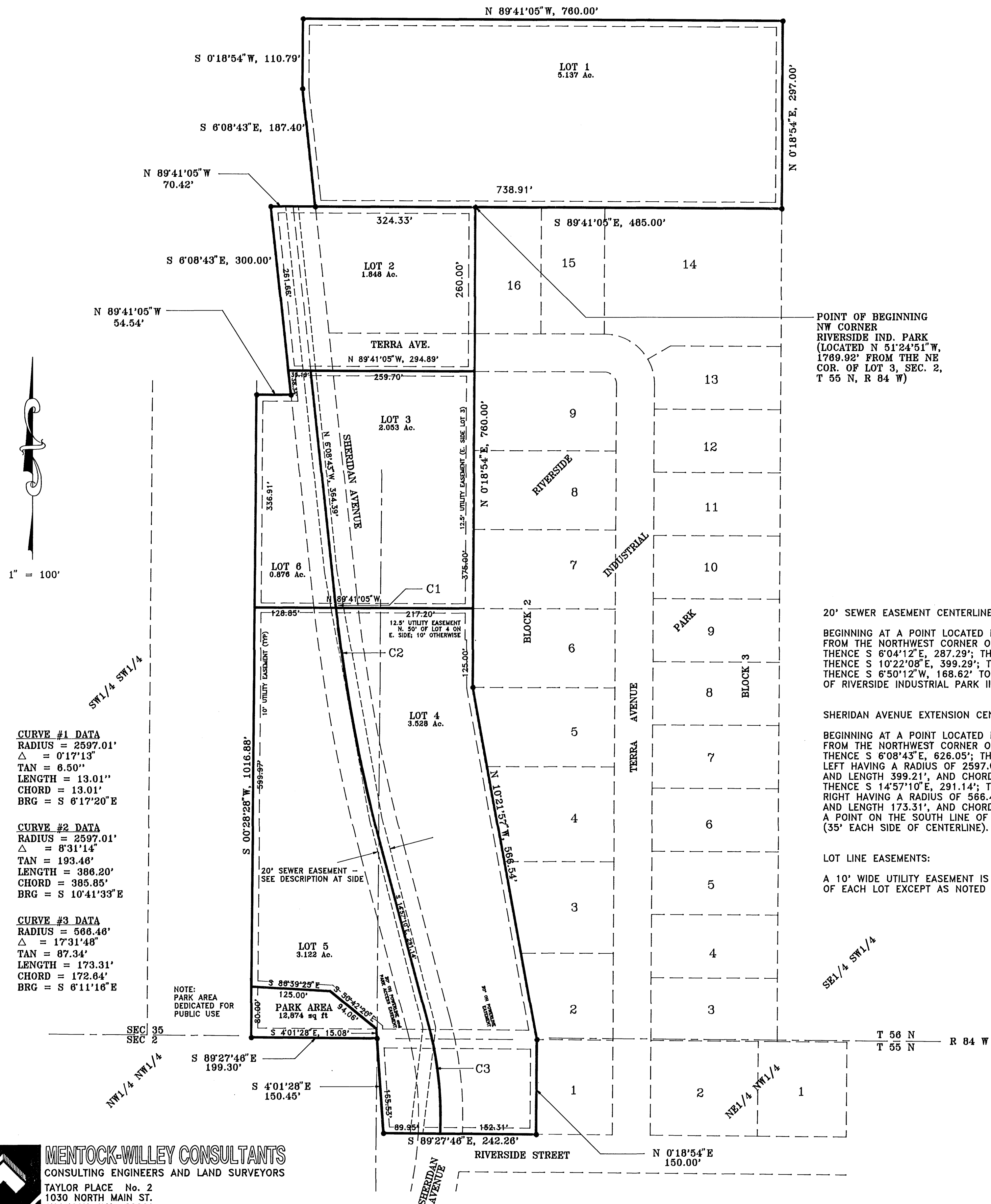


PLAT OF RIVERSIDE INDUSTRIAL PARK SECOND ADDITION

LOCATED IN THE SW1/4 OF SECTION 35, T 56 N, R 84 W
and
THE NE1/4 NW1/4 OF SECTION 2, T 55 N, R 84 W
CITY OF SHERIDAN, SHERIDAN COUNTY, WYOMING



CERTIFICATE OF DEDICATION

THE ABOVE OR FOREGOING SUBDIVISION OF THE FOLLOWING DESCRIBED LAND OR REAL ESTATE, TO WIT

THIS IS A SUBDIVISION OF A PART OF THE SW 1/4 OF SECTION 35, T 56 N, R 84 W, AND OF THE NE1/4 NW1/4 OF SECTION 2, T 55 N, R 84 W, MORE PARTICULARLY DESCRIBED AS FOLLOWS:

BEGINNING AT THE NORTHWEST CORNER OF RIVERSIDE INDUSTRIAL PARK SUBDIVISION TO THE CITY OF SHERIDAN, WYOMING;
THENCE S 89°41'05"E A DISTANCE OF 485.00';
THENCE N 0°18'54"E A DISTANCE OF 297.00';
THENCE N 89°41'05"W A DISTANCE OF 760.00';
THENCE S 0°18'54"W A DISTANCE OF 110.79';
THENCE S 0°18'54"E A DISTANCE OF 187.40';
THENCE N 89°41'05"W A DISTANCE OF 70.42';
THENCE S 6°08'43"E A DISTANCE OF 300.00';
THENCE N 89°41'05"W A DISTANCE OF 54.54';
THENCE S 0°28'28"W A DISTANCE OF 1016.88';
THENCE S 89°27'46"E A DISTANCE OF 199.30';
THENCE S 4°01'28"E A DISTANCE OF 150.45';
THENCE S 89°27'46"E A DISTANCE OF 242.26';
THENCE N 0°18'54"E A DISTANCE OF 150.00';
THENCE N 10°21'57"W A DISTANCE OF 566.54';
THENCE N 0°18'54"E A DISTANCE OF 760.00' TO THE POINT OF BEGINNING, CONTAINING 16.860 ACRES, MORE OR LESS.

THE UNDERSIGNED PROPRIETORS OF THE ABOVE DESCRIBED TRACT OF LAND HAVE CAUSED THE SAME TO BE SUBDIVIDED IN THE MANNER SHOWN ON THE ACCOMPANYING PLAT, WHICH SUBDIVISION SHALL BE KNOWN AS "RIVERSIDE INDUSTRIAL PARK II".

SAID PLAT IS PROPOSED AND OFFERED WITH FREE CONSENT AND IN ACCORDANCE WITH THE DESIRES OF THE UNDERSIGNED OWNERS AND PROPRIETORS, AND THE UNDERSIGNED OWNERS AND PROPRIETORS DO HEREBY RELEASE AND WAIVE ALL RIGHTS, UNDER AND BY VIRTUE OF THE HOMESTEAD EXEMPTION LAWS OF THE STATE OF WYOMING.

EASEMENTS ARE HEREBY DEDICATED FOR PUBLIC USE, THE LOCATION AND WIDTH OF WHICH ARE SHOWN IN DOTTED LINES ON THE ACCOMPANYING PLAT, AND SAID EASEMENTS MAY BE EMPLOYED IN PERPETUITY AS A COVENANT RUNNING WITH THE LAND FOR THE PURPOSE OF INSTALLING, REPAIRING, RE-INSTALLING, REPLACING AND MAINTAINING PUBLIC UTILITIES.

SHERIDAN AVENUE AS SHOWN ON THIS PLAT IS HEREBY DEDICATED FOR PUBLIC USE. IF PHYSICAL CONSTRUCTION OF SHERIDAN AVENUE IS NOT COMMENCED WITHIN SEVEN (7) YEARS OF THE DATE OF FILING OF THIS PLAT THIS DEDICATION SHALL BE VOID.

FURTHER DIVISION OF ANY LOTS SHOWN ON THIS PLAT WILL REQUIRE PHYSICAL CONSTRUCTION OF SHERIDAN AVENUE BY THE LOT OWNER / DEVELOPER.

FURTHER DIVISION OF LOT 2 WILL ALSO REQUIRE PHYSICAL CONSTRUCTION AND DEDICATION OF TERRA AVENUE BY THE LOT OWNER / DEVELOPER.

EXECUTED THIS 2nd DAY OF NOVEMBER, 1994 BY:

George P. Fletcher Susan P. Fletcher
GEORGE P. FLETCHER AND SUSAN P. FLETCHER

George P. Fletcher
FLETCHER CONSTRUCTION COMPANY, A WYOMING CORPORATION
GEORGE P. FLETCHER, PRESIDENT

Dorothy C. King Donald L. King
DOROTHY C. KING AND DONALD L. KING
TRUSTEES UNDER THE DOROTHY C. KING REVOCABLE TRUST (1/25/1980)

William L. King
WILLIAM L. KING

Charles Edward Catron
CHARLES EDWARD CATRON

Donald B. Roberts
HEIGHTS DEVELOPMENT CORPORATION, A WYOMING CORPORATION
DONALD B. ROBERTS, PRESIDENT

STATE OF WYOMING } SS
COUNTY OF SHERIDAN }

THE FOREGOING INSTRUMENT WAS ACKNOWLEDGED BEFORE ME THIS 2nd DAY OF NOVEMBER, 1994 BY GEORGE P. AND SUSAN P. FLETCHER.

MY COMMISSION EXPIRES: APRIL 13, 1997
Donald Johnson
NOTARY PUBLIC

STATE OF WYOMING } SS
COUNTY OF SHERIDAN }

THE FOREGOING INSTRUMENT WAS ACKNOWLEDGED BEFORE ME THIS 2nd DAY OF NOVEMBER, 1994 BY GEORGE P. FLETCHER, PRESIDENT FLETCHER CONSTRUCTION COMPANY, A WYOMING CORPORATION.

MY COMMISSION EXPIRES: APRIL 13, 1997
Donald Johnson
NOTARY PUBLIC

STATE OF WYOMING } SS
COUNTY OF SHERIDAN }

THE FOREGOING INSTRUMENT WAS ACKNOWLEDGED BEFORE ME THIS 2nd DAY OF NOVEMBER, 1994 BY CHARLES EDWARD CATRON.

MY COMMISSION EXPIRES: APRIL 13, 1997
Donald Johnson
NOTARY PUBLIC

STATE OF WYOMING } SS
COUNTY OF SHERIDAN }

THE FOREGOING INSTRUMENT WAS ACKNOWLEDGED BEFORE ME THIS 2nd DAY OF NOVEMBER, 1994 BY WILLIAM L. KING.

MY COMMISSION EXPIRES: MAY 18, 1996
Tom Mentock
NOTARY PUBLIC

STATE OF WYOMING } SS
COUNTY OF SHERIDAN }

THE FOREGOING INSTRUMENT WAS ACKNOWLEDGED BEFORE ME THIS 2nd DAY OF NOVEMBER, 1994 BY DOROTHY C. KING AND DONALD L. KING, TRUSTEES UNDER THE DOROTHY C. KING REVOCABLE TRUST. (1/25/1980)

MY COMMISSION EXPIRES: MAY 18, 1996
Tom Mentock
NOTARY PUBLIC

STATE OF WYOMING } SS
COUNTY OF SHERIDAN }

THE FOREGOING INSTRUMENT WAS ACKNOWLEDGED BEFORE ME THIS 2nd DAY OF NOVEMBER, 1994 BY DONALD B. ROBERTS, PRESIDENT, HEIGHTS DEVELOPMENT CORPORATION, A WYOMING CORPORATION.

MY COMMISSION EXPIRES: MAY 18, 1996
Tom Mentock
NOTARY PUBLIC

CITY ENGINEER CERTIFICATE OF APPROVAL

APPROVED BY THE CITY ENGINEER OF THE CITY OF SHERIDAN, WYOMING THIS 6th DAY OF December, 1994.

Edith Johnson Lameris
EDITH JOHNSON LAMERIS
CITY ENGINEER

CITY PLANNING COMMISSION CERTIFICATE OF APPROVAL

APPROVED BY THE SHERIDAN CITY PLANNING COMMISSION THIS 8th DAY OF December, 1994.

ATTEST:

Robert W. Brown
CHAIRMAN

Robert W. Brown
SECRETARY

CITY OF SHERIDAN CERTIFICATE OF APPROVAL

APPROVED BY THE MAYOR AND CITY CLERK IN AND FOR THE CITY OF SHERIDAN, WYOMING THIS 8th DAY OF DECEMBER, 1994.

ATTEST:

Clifton W. E. Chin
CITY CLERK

Debra Herbet
MAYOR

CERTIFICATE OF SURVEYOR

STATE OF WYOMING } SS
COUNTY OF SHERIDAN }

I, WILLIAM A. MENTOCK, OF SHERIDAN, WYOMING, A DULY REGISTERED PROFESSIONAL ENGINEER AND LAND SURVEYOR, DO HEREBY CERTIFY THAT THIS PLAT OF FLETCHER ADDITION TRULY AND CORRECTLY REPRESENTS THE RESULTS OF A SURVEY MADE BY ME OR UNDER MY DIRECT SUPERVISION.

William A. Mentock
WILLIAM A. MENTOCK
WYOMING P.E. & L.S. No. 3864

CERTIFICATE OF RECORDER

STATE OF WYOMING } SS
COUNTY OF SHERIDAN }

I HEREBY CERTIFY THAT THIS PLAT WAS FILED FOR RECORD IN MY OFFICE AT 2:30 O'CLOCK THIS 8 DAY OF DECEMBER, 1994, AND FILED IN DRAWER R, PLAT NUMBER 32.

INSTRUMENT No. 185852 FEE \$50.00

Ronald L. Wiley
COUNTY CLERK

Debra Herbet
DEPUTY COUNTY CLERK