

600 0 600

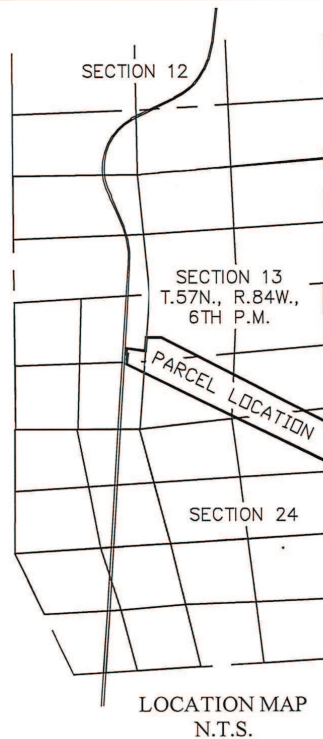
SCALE IN FEET



SURVEYOR'S CERTIFICATE:
I, TAD R. ROSENLUND, DO HEREBY CERTIFY THAT THIS PLAT WAS MADE FROM AN ACTUAL FIELD SURVEY PERFORMED BY ME OR UNDER MY DIRECT SUPERVISION AND THAT IT CORRECTLY SHOWS THE LOCATION TO THE BEST OF MY KNOWLEDGE.

LEGEND

- — — — — SECTION LINE
- — — — — INTERIOR SECTION LINE
- — — — — ROAD
- X — X — FENCE LINE
- — — — — ADJACENT PARCEL LINE
- ⊙ FOUND 3.25" BRASS ROW MONUMENT
- ⊕ FOUND MONUMENT AS DESCRIBED
- ⊙ SET 2" ALUMINUM CAP ON 3/8" REBAR



The basis of bearing is Wyoming State Plane Coordinate System, NAD 83, East Central Zone; PAF: 1.000233; all units are U.S. survey feet. Distances are at ground.



EXHIBIT B
TRACT 8 NE DECKER ROAD

SITUATED IN THE NE1/4NE1/4 SECTION 24 AND THE S1/2 SECTION 13,
T57N, R84W, 6TH P.M., SHERIDAN COUNTY, WYOMING

PROJECT BLACK GOLD
DATE 8/16/2021

EXHIBIT B - 1 of 1