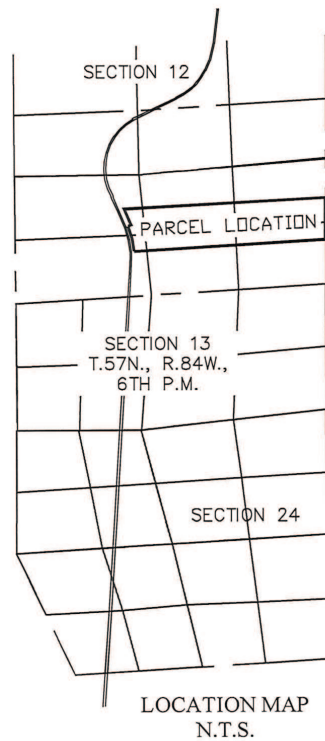
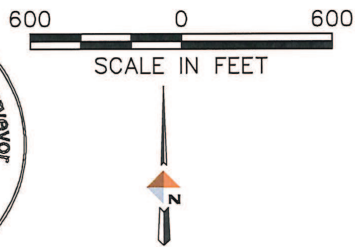


**SURVEYOR'S CERTIFICATE:**  
I, TAD R. ROSENLUND, DO HEREBY CERTIFY THAT THIS PLAT WAS MADE FROM AN ACTUAL FIELD SURVEY PERFORMED BY ME OR UNDER MY DIRECT SUPERVISION AND THAT IT CORRECTLY SHOWS THE LOCATION TO THE BEST OF MY KNOWLEDGE.

**LEGEND**

- — — — — SECTION LINE
- — — — — INTERIOR SECTION LINE
- — — — — ROAD
- X — X — FENCE LINE
- — — — — ADJACENT PARCEL LINE
- ⊙ FOUND 3.25" BRASS ROW MONUMENT
- ⊕ FOUND MONUMENT AS DESCRIBED
- ⊙ SET 2" ALUMINUM CAP ON 3/8" REBAR



The basis of bearing is Wyoming State Plane Coordinate System, NAD 83, East Central Zone; PAF: 1.000233; all units are U.S. survey feet. Distances are at ground.



**EXHIBIT B**  
TRACT 12 NE DECKER ROAD  
SITUATED IN N1/2 OF SECTION 13, T57N, R84W, 6TH P.M.,  
SHERIDAN COUNTY, WYOMING

PROJECT BLACK GOLD  
DATE 8/17/2021

**EXHIBIT B - 1 of 1**