

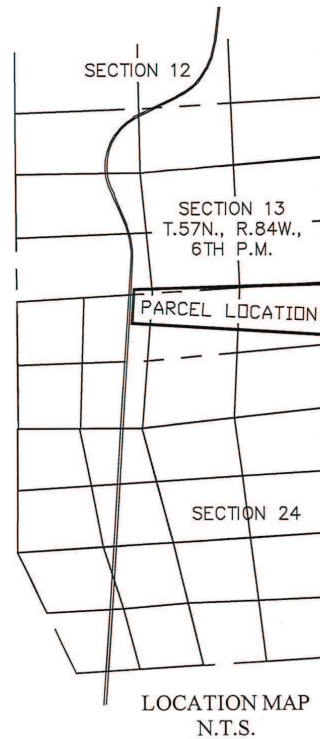
600 0 600
SCALE IN FEET



SURVEYOR'S CERTIFICATE:
I, TAD R. ROSENLUND, DO HEREBY CERTIFY THAT THIS PLAT
WAS MADE FROM AN ACTUAL FIELD SURVEY PERFORMED BY ME
OR UNDER MY DIRECT SUPERVISION AND THAT IT CORRECTLY
SHOWS THE LOCATION TO THE BEST OF MY KNOWLEDGE.

LEGEND

- — — — — SECTION LINE
- — — — — INTERIOR SECTION LINE
- — — — — ROAD
- X — X — FENCE LINE
- — — — — ADJACENT PARCEL LINE
- FOUND 3.25" BRASS ROW MONUMENT
- ⊕ FOUND MONUMENT AS DESCRIBED
- ⊙ SET 2" ALUMINUM CAP ON 1/2" REBAR



The basis of bearing is Wyoming State Plane
Coordinate System, NAD 83, East Central Zone;
PAF: 1.000233; all units are U.S. survey feet.
Distances are at ground.



EXHIBIT B
TRACT 10 NE DECKER ROAD
SITUATED IN SECTION 13, T57N, R84W, 6TH P.M., SHERIDAN COUNTY,
WYOMING

PROJECT BLACK GOLD
DATE 8/17/2021

EXHIBIT B - 1 of 1