

LEGAL DESCRIPTION
EXHIBIT "A"

TRACT 9 NE DECKER ROAD

A tract of land situated within the NE1/4NE1/4 of Section 24 and the NE1/4SW1/4 and the SE1/4 of Section 13, Township 57 North, Range 84 West, 6th P.M., Sheridan County, Wyoming, as shown on EXHIBIT "B" attached hereto and by this reference made a part hereof, being more particularly described as follows:

Commencing at the S1/4 corner of Section 13, thence N 83°39'33" E, 3946.53 feet, along the north section line to the SE corner, and the true Point of Beginning:

thence S 0°10'6" E, 411.88 feet along the east line of Section 24; thence N 55°43'45" W, 1750.33 feet; thence N 61°5'10" W, 2071.67 feet; thence N 89°32'17" W, 646.77 feet; thence S 0°9'30" W, 351.29 feet; thence N 88°16'12" W, 291.25 feet, to a point on the easterly right-of-way line of State Highway 338; thence along said right-of-way line, N 3°25'22" E, 603.35 feet; thence departing from said right-of-way, S 86°30'59" E, 4163.83 feet, to a point on the east line of Section 13; thence S 0°11'36" E, 1587.37 feet, to the Point of Beginning.

Containing 85.76 acres, more or less, and subject to any prior recorded easements, exceptions, restrictions or conveyances.

The basis of bearing is Wyoming State Plane Coordinate System, NAD 83, East Central Zone; Scale Factor: 1.000233; all units are U.S. survey feet; distances are ground.



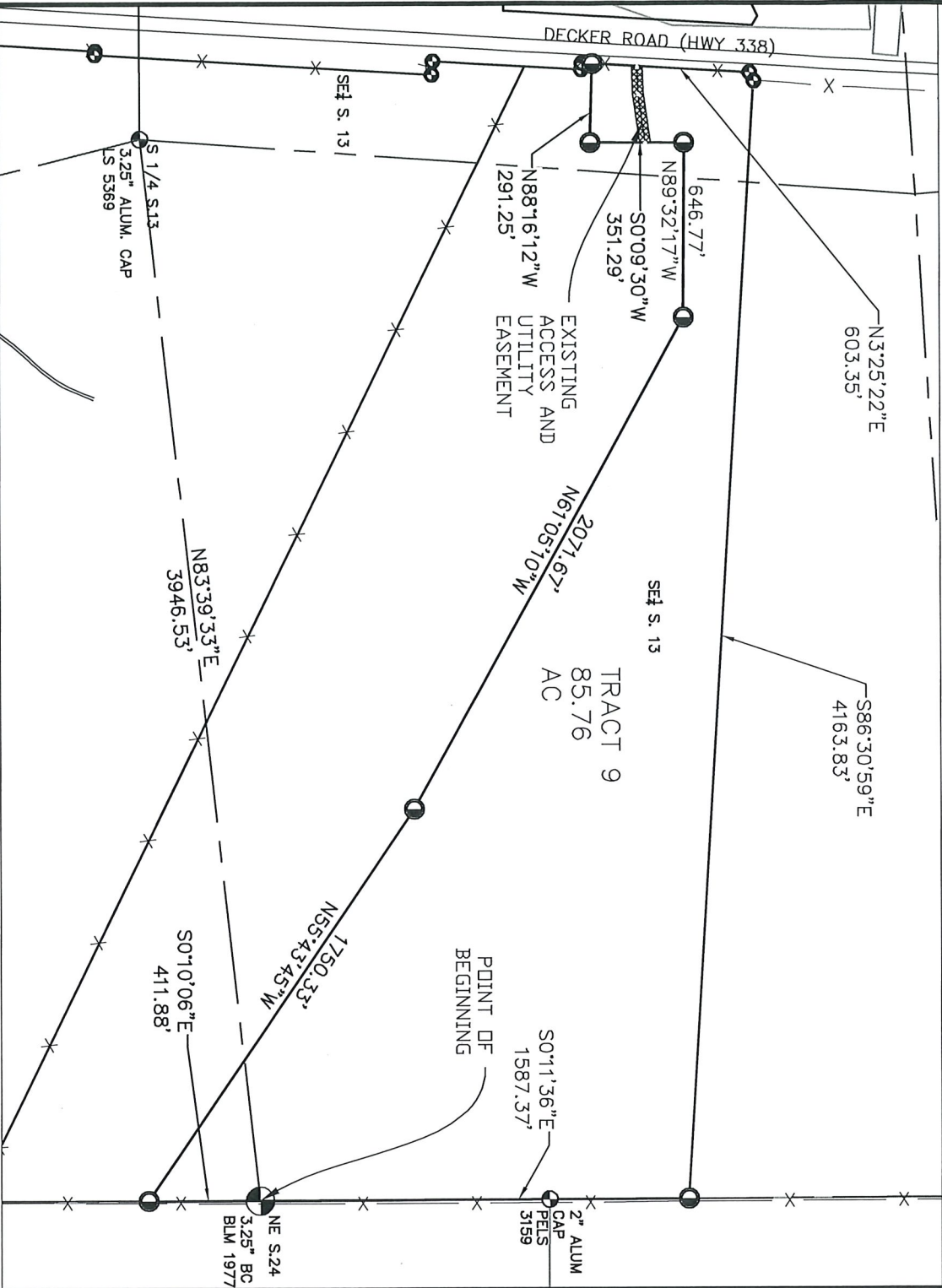
EXHIBIT A

TRACT 9 NE DECKER ROAD

SITUATED IN THE NE1/4NE1/4 OF SECTION 24, AND THE NE1/4SW1/4
AND THE SE1/4 OF SECTION 13, T57N, R84W, 6TH P.M., SHERIDAN
COUNTY, WYOMING

PROJECT	BLACK GOLD
DATE	9/7/2021

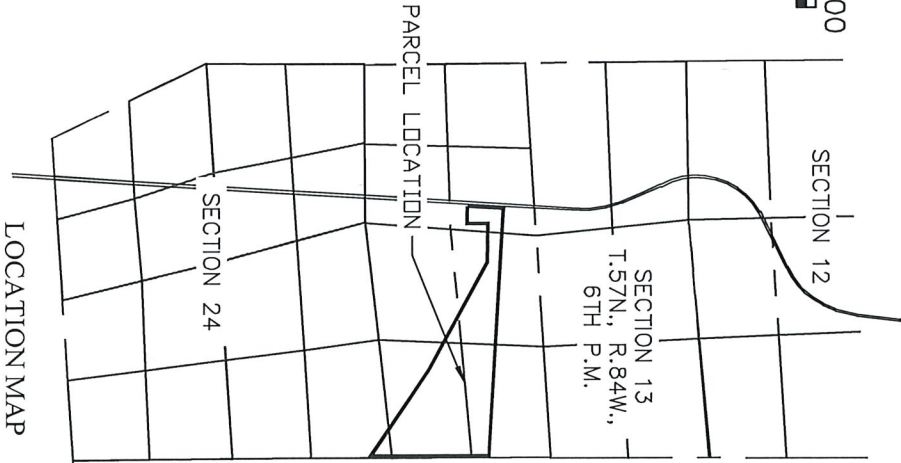
EXHIBIT "B"



SURVEYOR'S CERTIFICATE:
I, TAD R. ROSENLUND, DO HEREBY CERTIFY THAT THIS PLAT
WAS MADE FROM AN ACTUAL FIELD SURVEY PERFORMED BY ME
OR UNDER MY DIRECT SUPERVISION AND THAT IT CORRECTLY
SHOWS THE LOCATION TO THE BEST OF MY KNOWLEDGE.

LEGEND

- SECTION LINE
- INTERIOR SECTION LINE
- ROAD
- FENCE LINE
- ADJACENT PARCEL LINE
- FOUND 3.25" BRASS ROW MONUMENT
- FOUND MONUMENT AS DESCRIBED
- SET 2" ALUMINUM CAP ON 5" REBAR



The basis of bearing is Wyoming State Plane
Coordinate System, NAD 83, East Central Zone;
PAF: 1.000235; all units are U.S. survey feet.
Distances are at ground.



DOWL
WWW.DOWL.COM

EXHIBIT B

TRACT 9 NE DECKER ROAD

SITUATED IN THE NE1/4NE1/4 OF SECTION 24, AND THE NE1/4SW1/4
AND THE SE1/4 OF SECTION 13, T57N, R84W, 6TH P.M., SHERIDAN
COUNTY, WYOMING

PROJECT BLACK GOLD
DATE 9/7/2021