

INDEX OF SHEETS

- R1 Cover Sheet
- R2 - R3 Right-of-Way Sheets
- R4 - R5 Intersection Topography Sheets
- R6 - R7 Coordinate Summaries

CERTIFICATE OF RECORDER

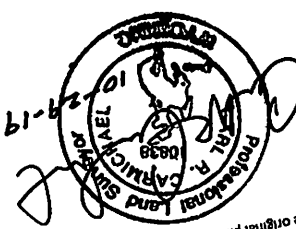
State of Wyoming )  
County of Sheridan )

I hereby certify that this Record of Survey was filed for record in my office  
at 2:37 pm, on the 29th day of Oct, 2019  
and recorded in Plat Book No. 4-574 Document No. 2019-75366

County Clerk, Register of Deeds  
\$5000 Mary Joanne Peltz Deputy

CERTIFICATE OF SURVEYOR

I, Carl R. Carmichael, Wyoming Professional Land Surveyor No. 10838, of Sheridan, Wyoming, do hereby certify that this Record of Survey was prepared from the results of a survey made by me or under my direct supervision, and is, to the best of my knowledge, information and belief, a true and correct representation of said survey.

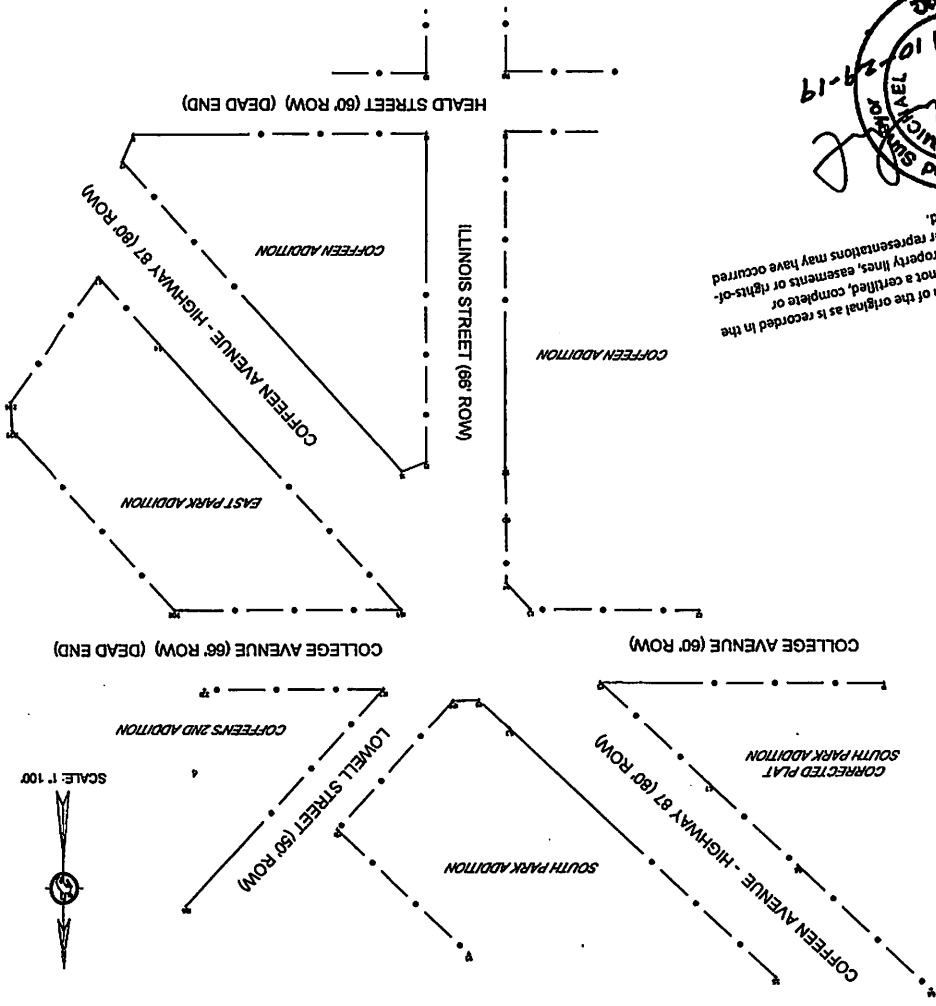


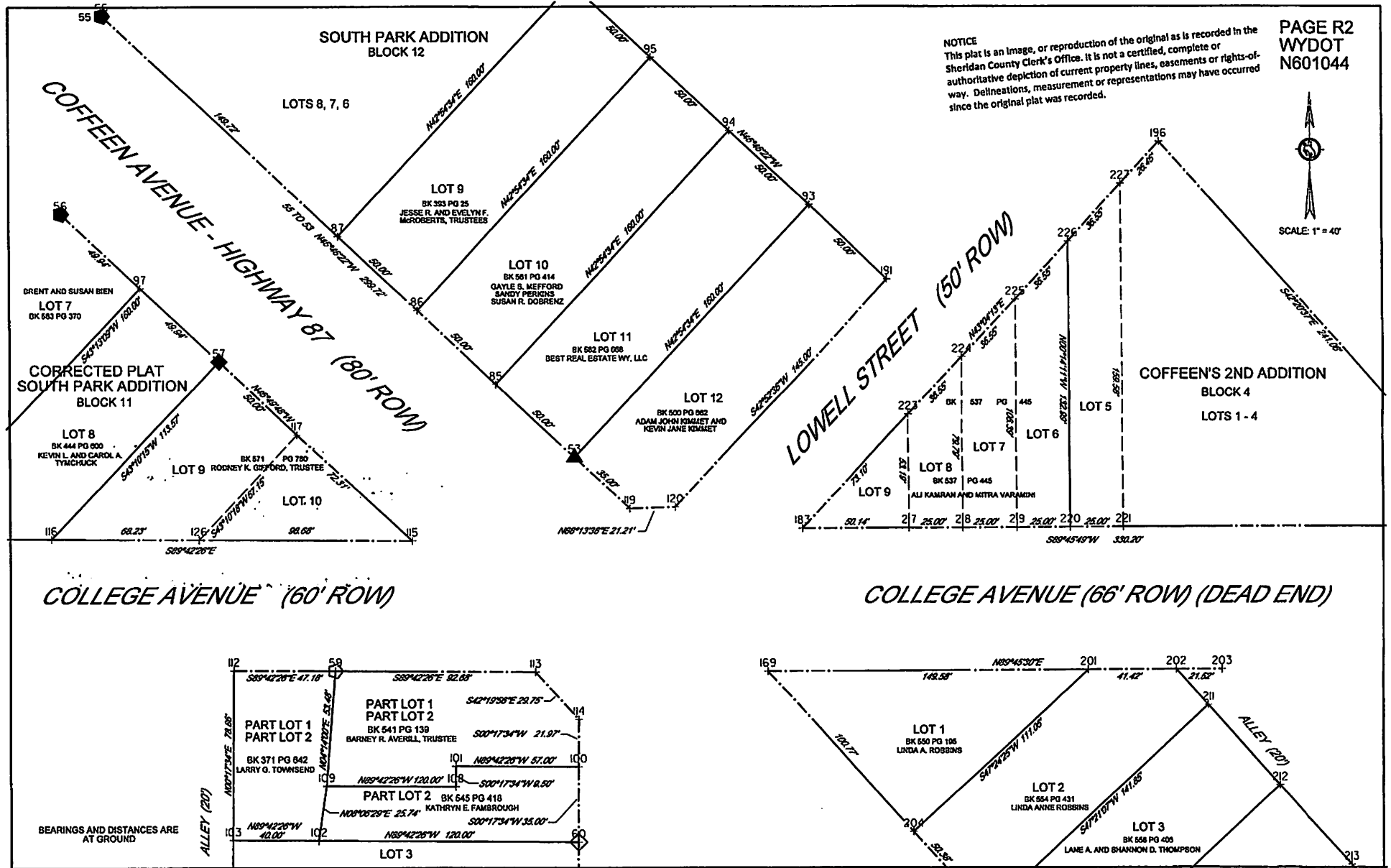
NOTICE  
This plat is an image, or reproduction of the original as is recorded in the  
Sheridan County Clerk's Office. It is not a certified, complete or  
authoritative depiction of current property lines, easements or rights-of-  
way. Delineations, measurement or representations may have occurred since the original plat was recorded.



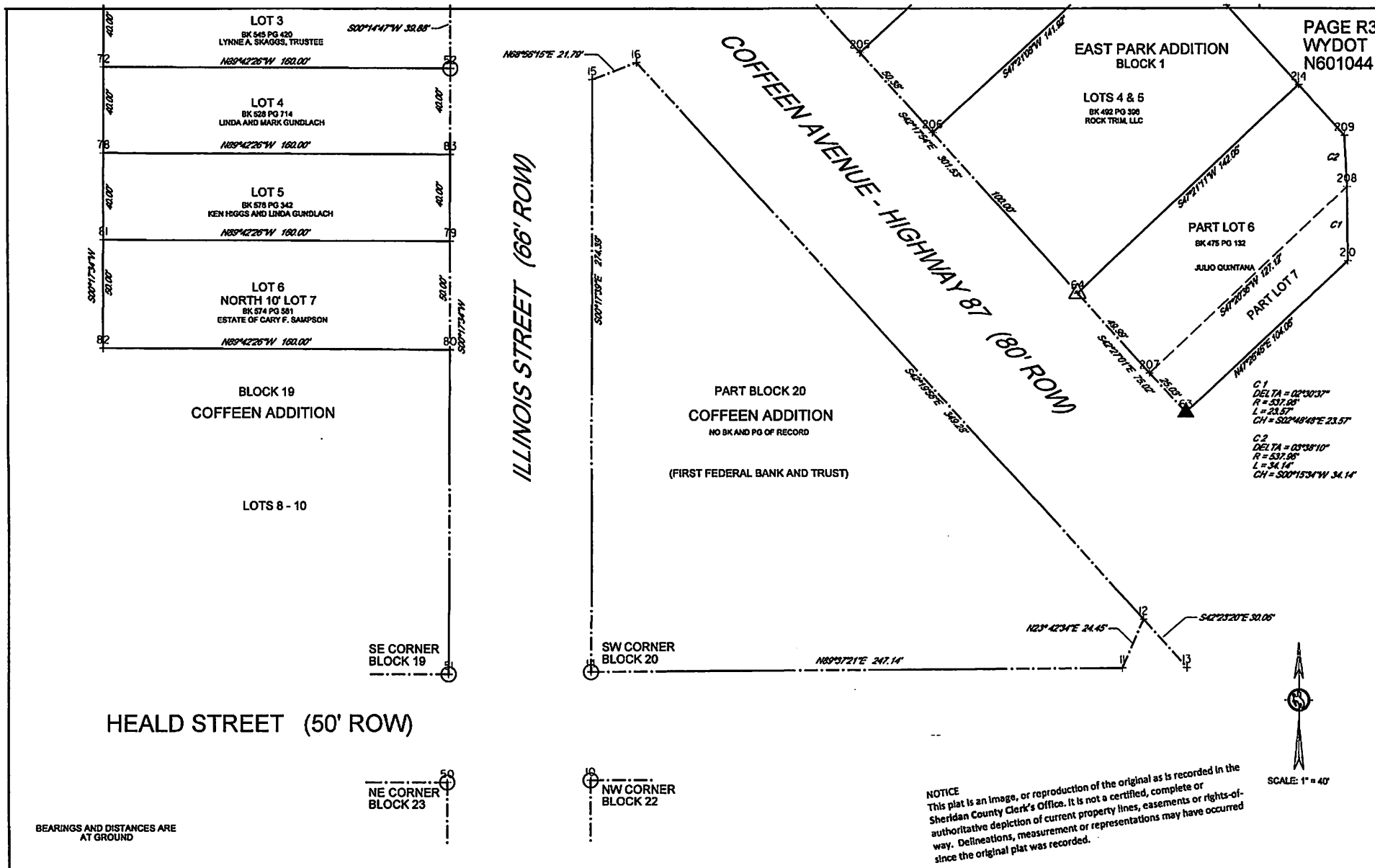
LEGEND

- 2" ALUMINUM CAP - ILLEGIBLE
- 2" ALUMINUM CAP PELS 3159
- 2" ALUMINUM CAP PLS 6812
- 2" ALUMINUM CAP PELS 3864
- 2" ALUMINUM CAP PELS 4364
- #5 REBAR
- CARRIAGE BOLT





#574 pg 2 of 7

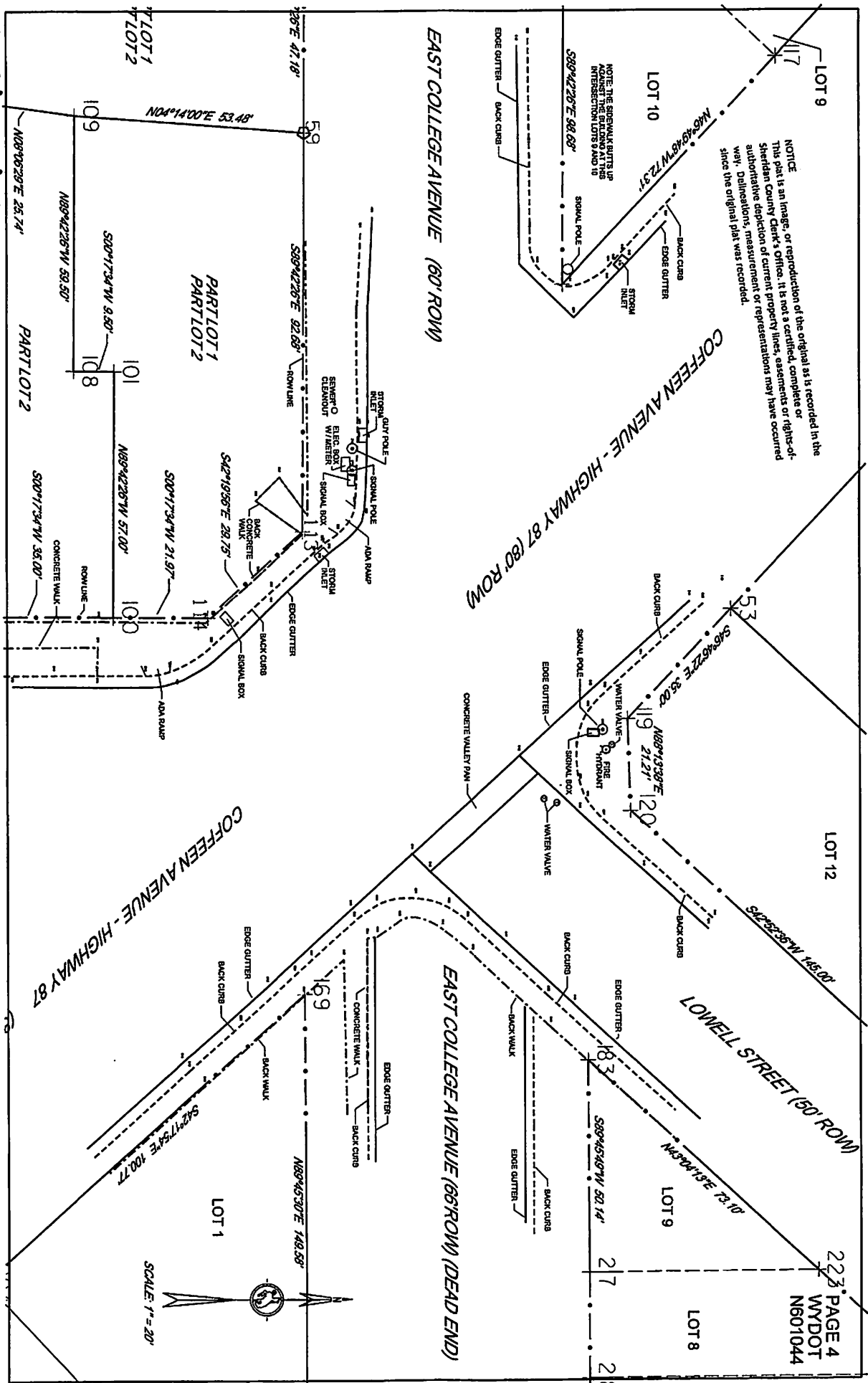


#574 pg 3 of 7

EAST COLLEGE AVENUE (66' ROW) (DEAD END)

#574 pg 4 of 7

**SCALE: 1" = 20'**





WYOMING DEPARTMENT OF TRANSPORTATION  
 THE INTERSECTION OF COFFEEN AVE., ILLINOIS ST., COLLEGE AVE., LOWELL ST.,  
 PROJECT NO. N601044  
 CITY OF SHERIDAN  
 SHERIDAN COUNTY, WY

SUMMARY OF FOUND AND CALCULATED PROPERTY CORNERS

NOTICE  
 This plat is an image, or reproduction of the original as is recorded in the  
 Sheridan County Clerk's Office. It is not a certified, complete or  
 authoritative depiction of current property lines, easements or rights-of-  
 way. Delineations, measurement or representations may have occurred  
 since the original plat was recorded.

PAGE R6  
 WYDOT  
 N601044

POINT NO.	NORTHING	EASTING	REMARKS	STATUS
10	1892357.105	1412269.238	NW CORNER BLOCK 22, COFFEEN ADDITION, SE CORNER ILLINOIS AND HEALD - 2" ALUM CAP PELS 4364	ACCEPT
11	1892408.768	1412516.559	ANGLE POINT, SOUTH LINE BLOCK 20, COFFEEN ADDITION, - CALC'D FROM SURVEY BY PELS 4364	ACCEPT
12	1892431.154	1412526.391	ANGLE POINT AT COFFEEN RIGHT-OF-WAY, EAST SIDE BLOCK 20, COFFEEN ADDITION - CALC'D FROM SURVEY BY PELS 4364	ACCEPT
13	1892408.955	1412546.654	SE CORNER BLOCK 20, COFFEEN ADDITION, AT COFFEEN RIGHT-OF-WAY, CALC'D FROM SURVEY BY PELS 4364	ACCEPT
14	1892407.139	1412269.428	SW CORNER BLOCK 20, COFFEEN ADDITION, NE CORNER ILLINOIS AND HEALD - 2" ALUM CAP PELS 4364	ACCEPT
15	1892681.528	1412270.837	ANGLE POINT, WEST LINE BLOCK 20, COFFEEN ADDITION, EAST LINE ILLINOIS ST. - CALC'D FROM SURVEY BY PELS 4364	ACCEPT
16	1892689.360	1412291.175	ANGLE POINT AT EAST LINE BLOCK 20, COFFEEN ADDITION, AT COFFEEN RIGHT-OF-WAY, CALC'D FROM SURVEY BY PELS 4364	ACCEPT
50	1892356.041	1412202.873	NE CORNER BLOCK 23, COFFEEN ADDITION, SW CORNER ILLINOIS AND HEALD, 2" ALUM CAP PELS 4364	ACCEPT
51	1892406.056	1412203.469	SE CORNER BLOCK 19, COFFEEN ADDITION, NW CORNER ILLINOIS AND HEALD, 2" ALUM CAP PELS 4364	ACCEPT
52	1892686.672	1412204.935	SE CORNER LOT 3, BLOCK 19, COFFEEN ADDITION, WEST RIGHT-OF-WAY ILLINOIS ST., 2" ALUM CAP PELS 4364	ACCEPT
53	1892905.145	1412203.685	WEST CORNER LOT 12, BLOCK 12, SOUTH PARK ADDITION, EAST RIGHT-OF-WAY COFFEEN AVE., FOUND #5 REBAR	ACCEPT
55	1893110.420	1411985.297	WEST CORNER LOT 6, BLOCK 12, SOUTH PARK ADDITION, EAST RIGHT-OF-WAY COFFEEN AVE., FOUND 2" ALUM CAP ILLEGIBLE	ACCEPT
56	1893018.261	1411966.056	NE CORNER LOT 7, BLOCK 11, CORRECTED PLAT OF SOUTH PARK ADDITION, WEST RIGHT-OF-WAY COFFEEN AVE., FOUND 2" ALUM CAP ILLEGIBLE	ACCEPT
57	1892949.936	1412038.891	NE CORNER LOT 9, BLOCK 11, CORRECTED PLAT OF SOUTH PARK ADDITION, WEST RIGHT-OF-WAY COFFEEN AVE., FOUND 2" ALUM CAP PELS 3159	ACCEPT
59	1892805.988	1412092.686	NW CORNER PART LOT 1, BLOCK 19, COFFEEN ADDITION, BK 541 PG 139, FOUND CARRIAGE BOLT	ACCEPT
60	1892726.556	1412205.106	SE CORNER LOT 2, BLOCK 19, COFFEEN ADDITION, FOUND 2" ALUM CAP PLS 6812	ACCEPT
63	1892527.356	1412546.657	SOUTH CORNER PART LOT 7, BLOCK 1, EAST PARK ADDITION, FOUND #5 REBAR	ACCEPT
64	1892582.706	1412496.025	WEST CORNER LOT 6, BLOCK 1, EAST PARK ADDITION, FOUND 2" ALUM CAP PELS 3864 EAST RIGHT-OF-WAY COFFEEN AVE.	ACCEPT
72	1892687.489	1412044.937	SW CORNER LOT 3, BLOCK 19, COFFEEN ADDITION, CALC'D	ACCEPT
79	1892606.673	1412204.526	SE CORNER LOT 5, BLOCK 19, COFFEEN ADDITION - CALC'D	ACCEPT
80	1892556.673	1412204.270	SE CORNER LOT 6, BLOCK 19, COFFEEN ADDITION - CALC'D	ACCEPT
81	1892607.490	1412044.528	SW CORNER LOT 5, BLOCK 19, COFFEEN ADDITION - CALC'D	ACCEPT
82	1892557.491	1412044.272	SW CORNER LOT 6, BLOCK 19, COFFEEN ADDITION - CALC'D	ACCEPT
83	1892646.672	1412204.730	SE CORNER LOT 4, BLOCK 19, COFFEEN ADDITION - CALC'D	ACCEPT
85	1892939.389	1412167.253	WEST CORNER LOT 11, BLOCK 12, SOUTH PARK ADDITION - CALC'D	ACCEPT
86	1892973.634	1412130.821	WEST CORNER LOT 10, BLOCK 12, SOUTH PARK ADDITION - CALC'D	ACCEPT
87	1893007.879	1412094.389	WEST CORNER LOT 9, BLOCK 12, SOUTH PARK ADDITION - CALC'D	ACCEPT
93	1893022.333	1412312.620	EAST CORNER LOT 11, BLOCK 12, SOUTH PARK ADDITION - CALC'D	ACCEPT
94	1893056.578	1412276.188	EAST CORNER LOT 10, BLOCK 12, SOUTH PARK ADDITION - CALC'D	ACCEPT
95	1893090.823	1412239.756	EAST CORNER LOT 9, BLOCK 12, SOUTH PARK ADDITION - CALC'D	ACCEPT
97	1892984.052	1412002.522	EAST CORNER LOT 7, BLOCK 11, CORRECTED PLAT OF SOUTH PARK ADDITION - CALC'D	ACCEPT
100	1892761.556	1412205.285	SE CORNER PART LOT 2, BK 541 PG 139, BLOCK 19, COFFEEN ADDITION - CALC'D	ACCEPT
101	1892761.847	1412148.286	ANGLE POINT, LINE BETWEEN PART LOT 1 AND PART LOT 2, BK 541 PG 139, - CALC'D	ACCEPT
102	1892727.169	1412085.108	SE CORNER PART LOT 1 PART LOT 2, BLOCK 19, COFFEEN ADDITION, POL SOUTH LINE LOT 2 - CALC'D	ACCEPT
103	1892727.374	1412045.108	SW CORNER LOT 2, BLOCK 19, COFFEEN ADDITION, SW CORNER BK 371 PG 642, - CALC'D	ACCEPT
108	1892752.347	1412148.237	ANGLE POINT, SOUTH LINE PART LOT 1 PART LOT 2, BK 541 PG 139, - CALC'D	ACCEPT
109	1892752.651	1412088.738	ANGLE POINT, EAST LINE PART LOT 1 PART LOT 2 BK 371 PG 642 - CALC'D	ACCEPT
112	1892806.230	1412045.511	NW CORNER PART LOT 1 PART LOT 2 BK 371 PG 642 - CALC'D	ACCEPT
113	1892805.515	1412185.364	ANGLE POINT NORTH LINE LOT 1 AT COFFEEN RIGHT-OF-WAY BK 541 PG 139 - CALC'D	ACCEPT
114	1892783.523	1412205.397	ANGLE POINT EAST LINE LOT 1, BLOCK 19, COFFEEN AVE., AT WEST COFFEEN RIGHT-OF-WAY, BK 541 PG 139, CALC'D	ACCEPT

#574 pg 6 of 7

WYOMING DEPARTMENT OF TRANSPORTATION  
PROJECT NO. N601044, CONTINUED

SUMMARY OF FOUND AND CALCULATED PROPERTY CORNERS

NOTICE  
This plat is an image, or reproduction of the original as is recorded in the  
Sheridan County Clerk's Office. It is not a certified, complete or  
authoritative depiction of current property lines, easements or rights-of-  
way. Delineations, measurement or representations may have occurred  
since the original plot was recorded.

PAGE R7  
WYDOT  
N601044

POINT NO.	NORTHING	EASTING	REMARKS	STATUS
115	1892866.253	1412128.096	SE CORNER LOT 10, BLOCK 11, CORRECTED PLAT OF SOUTH PARK ADDITION, AT WEST ROW INTERSECTION COFFEEEN AVE., AND COLLEGE, CALC'D	ACCEPT
116	1892867.106	1411961.187	SW CORNER LOT 9, BLOCK 11, CORRECTED PLAT OF SOUTH PARK ADDITION, AT COLLEGE AVE., RIGHT -OF-WAY	ACCEPT
117	1892915.728	1412075.357	NORTH CORNER LOT 10, BLOCK 11, CORRECTED PLAT OF SOUTH PARK ADDITION, WEST RIGHT -OF WAY COFFEEEN, CALC'D	ACCEPT
119	1892881.174	1412229.188	ANGLE POINT SW LINE LOT 12, BLOCK 12, SOUTH PARK ADDITION, AT COFFEEEN AVE., AND LOWELL RIGHTS -OF-WAY, CALC'D	ACCEPT
120	1892881.830	1412250.391	ANGLE POINT SW LINE LOT 12, BLOCK 12, SOUTH PARK ADDITION, AT LOWELL RIGHT -OF-WAY, CALC'D	ACCEPT
169	1892805.732	1412293.099	WEST CORNER LOT 1, BLOCK 1, EAST PARK ADDITION, CALC'D FROM ORIGINAL ROW PLANS FOR PROJECT NO. M-4411(4) SHEET 4	ACCEPT
183	1892871.889	1412308.946	WEST CORNER LOT 9, BLOCK 4, COFFEEEN'S 2ND ADDITION, CALC'D FROM ORIGINAL ROW PLANS FOR PROJECT NO. M-4411(4) SHEET 4	ACCEPT
191	1892988.089	1412349.052	EAST CORNER LOT 12, BLOCK 12, SOUTH PARK ADDITION, AT RIGHT -OF -WAY LOWELL ST. CALC'D	ACCEPT
196	1893051.421	1412476.774	NORTH CORNER LOT 4, BLOCK 4, COFFEEEN'S 2ND ADDITION, CALC'D FROM PROJECT M-4411(4) PLANS	ACCEPT
197	1892873.249	1412639.146	EAST CORNER LOT 1, BLOCK 4, COFFEEEN'S ADDITION, CALC'D FROM PROJECT M-4411(4) NOT SHOWN ON DRAWINGS	ACCEPT
201	1892806.363	1412442.678	EAST CORNER LOT 1, BLOCK1, EAST PARK ADDITION, CALC'D FROM PROJECT M-4411(4)	ACCEPT
202	1892806.537	1412484.097	NE CORNER LOT 2, BLOCK 1, EAST PARK ADDITION, CALC'D FROM PROJECT M-4411(4) AT WEST SIDE ALLEY	ACCEPT
203	1892806.628	1412505.617	POINT ON COLLEGE AVE., AT EAST LINE ALLEY, CALC'D FROM PROJECT NO. M-4411(4)	ACCEPT
204	1892731.197	1412360.916	SOUTH CORNER LOT 1, BLOCK 1, EAST PARK ADDITION, CALC'D FROM PROJECT M-4411(4)	ACCEPT
205	1892693.934	1412394.822	SOUTH CORNER LOT 2, BLOCK 1, EAST PARK ADDITION, CALC'D FROM PROJECT M-4411(4)	ACCEPT
206	1892656.670	1412428.727	SOUTH CORNER LOT 3, BLOCK 1, EAST PARK ADDITION, CALC'D FROM PROJECT M-4411(4)	ACCEPT
207	1892545.731	1412529.668	SOUTH CORNER LOT 8, BLOCK 1, EAST PARK ADDITION, CALC'D FROM FOUND MONUMENTS 63 AND 64	ACCEPT
208	1892631.868	1412623.156	SOUTH LINE LOT 6, BLOCK 1, EAST PARK ADDITION, AT WEST LINE SHERIDAN AVE., PCC CALC'D FROM PROJECT M-4411(4)	ACCEPT
209	1892655.410	1412621.999	ANGLE POINT EAST LINE LOT 6, BLOCK 1, EAST PARK ADDITION, PC CALC'D FROM PROJECT M-4411(4)	ACCEPT
210	1892597.729	1412623.311	ANGLE POINT PART LOT 7, BLOCK 1, EAST PARK ADDITION, PT, CALC'D FROM PROJECT M-4411(4)	ACCEPT
211	1892790.035	1412499.155	EAST CORNER LOT 2, BLOCK 1, EAST PARK ADDITION, CALC'D FROM PROJECT M-4411(4)	ACCEPT
212	1892752.820	1412533.114	EAST CORNER LOT 3, BLOCK 1, EAST PARK ADDITION, CALC'D FROM PROJECT M-4411(4)	ACCEPT
213	1892715.885	1412566.816	EAST CORNER LOT 4, BLOCK 1, EAST PARK ADDITION, CALC'D FROM PROJECT M-4411(4)	ACCEPT
214	1892678.951	1412600.518	EAST CORNER LOT 5, BLOCK 1, EAST PARK ADDITION, CALC'D FROM PROJECT M-4411(4)	ACCEPT
217	1892872.096	1412359.086	SE CORNER LOT 9, BLOCK 4, COFFEEEN'S 2ND ADDITION, CALC'D FROM PROJECT M-4411(4)	ACCEPT
218	1892872.199	1412384.156	SE CORNER LOT 8, BLOCK 4, COFFEEEN'S 2ND ADDITION, CALC'D FROM PROJECT M-4411(4)	ACCEPT
219	1892872.303	1412409.225	SE CORNER LOT 7, BLOCK 4, COFFEEEN'S 2ND ADDITION, CALC'D FROM PROJECT M-4411(4)	ACCEPT
220	1892872.406	1412434.295	SE CORNER LOT 6, BLOCK 4, COFFEEEN'S 2ND ADDITION, SE CORNER BK 537 PG 445, CALC'D FROM PROJECT M-4411(4)	ACCEPT
221	1892872.510	1412459.365	SE CORNER LOT 5, BLOCK 4, COFFEEEN'S 2ND ADDITION, CALC'D FROM PROJECT M-4411(4)	ACCEPT
223	1892925.290	1412358.866	NORTH CORNER LOT 9, BLOCK 4, COFFEEEN'S 2ND ADDITION, CALC'D FROM PROJECT M-4411(4)	ACCEPT
224	1892951.990	1412383.826	NORTH CORNER LOT 8, BLOCK 4, COFFEEEN'S 2ND ADDITION, CALC'D FROM PROJECT M-4411(4)	ACCEPT
225	1892978.691	1412408.785	NORTH CORNER LOT 7, BLOCK 4, COFFEEEN'S 2ND ADDITION, CALC'D FROM PROJECT M-4411(4)	ACCEPT
226	1893005.391	1412433.745	NORTH CORNER LOT 6, BLOCK 4, COFFEEEN'S 2ND ADDITION, NE CORNER BK 537 PG 445, CALC'D FROM PROJECT M-4411(4)	ACCEPT
227	1893032.091	1412458.705	NORTH CORNER LOT 5, BLOCK 4, COFFEEEN'S 2ND ADDITION, CALC'D FROM PROJECT M-4411(4)	ACCEPT

#574 pg 7 of 7