

LEGAL DESCRIPTION
EXHIBIT "A"

TRACT 4 SE DECKER ROAD

A tract of land situated within Section 24, Township 57 North, Range 84 West, 6th P.M., Sheridan County, Wyoming, as shown on EXHIBIT "B" attached hereto and by this reference made a part hereof, being more particularly described as follows:

Commencing at the N1/4 corner of said Section 24, thence S 42°5'36" E, 2223.54 feet, to the true Point of Beginning; thence S 0°0'12" W, 1916.45 feet; thence S 89°40'37" W, 1481.75 feet; thence S 0°3'145" W, 345.73 feet; thence N 89°13'31" W, 572.70 feet to a point on the easterly right-of-way line of State Highway 338; thence along said right-of-way N 3°27'19" E, 2106.21 feet; thence, departing from said right-of-way, N 89°15'43" E, 115.74 feet; thence N 39°23'33" E, 224.49 feet; thence S 88°31'44" E, 1371.06 feet; thence N 86°5'42" E, 302.63 feet, to the Point of Beginning.

Containing 90.93 acres, more or less, and subject to any prior recorded easements, exceptions, restrictions or conveyances.

The basis of bearing is Wyoming State Plane Coordinate System, NAD 83, East Central Zone; Scale Factor: 1.000233; all units are U.S. survey feet; distances are ground.

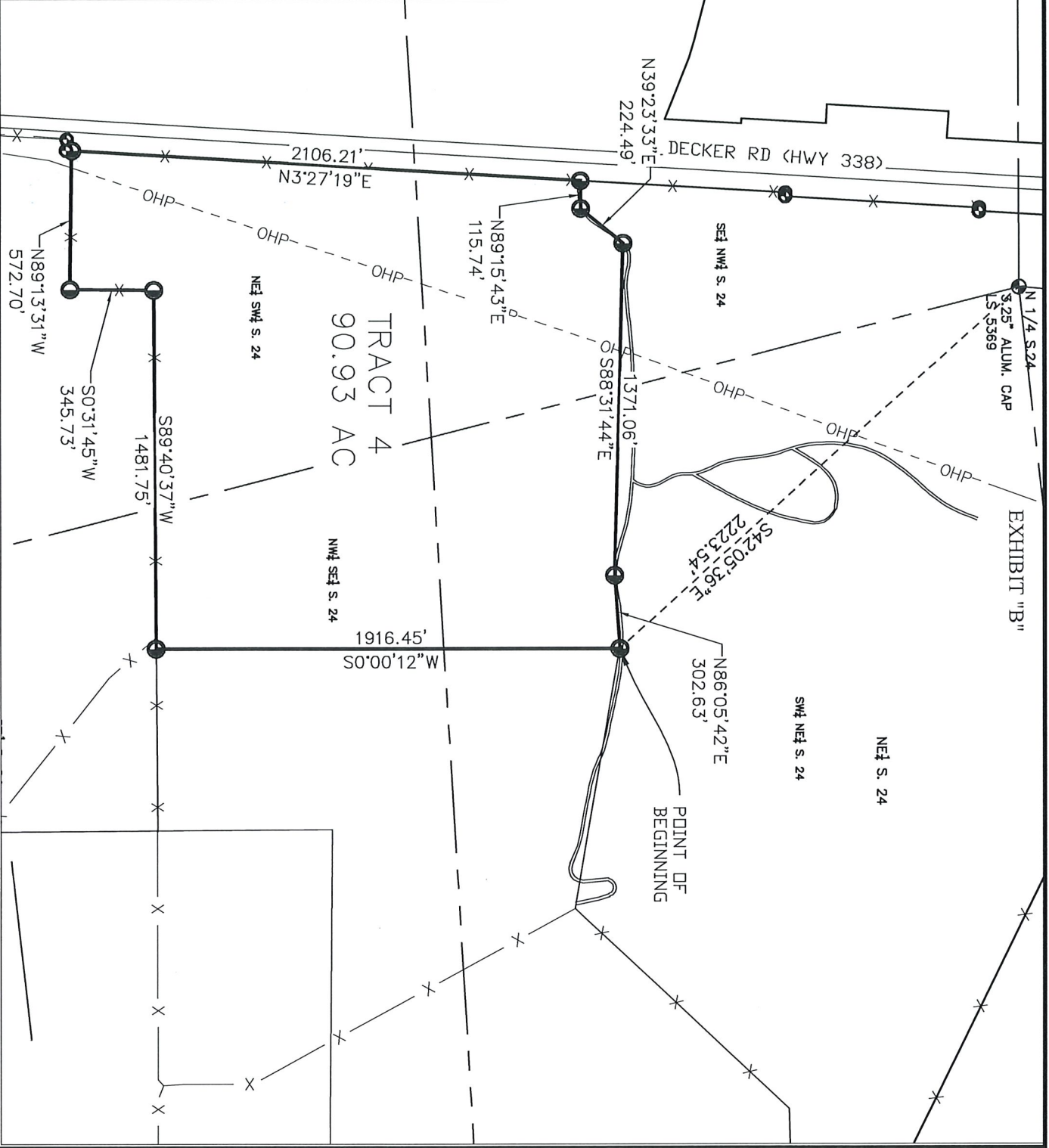


EXHIBIT A

TRACT 4 SE DECKER ROAD

SITUATED IN SECTION 24, T57N, R84W, 6TH P.M., SHERIDAN
COUNTY, WYOMING

PROJECT	BLACK GOLD
DATE	8/23/2021

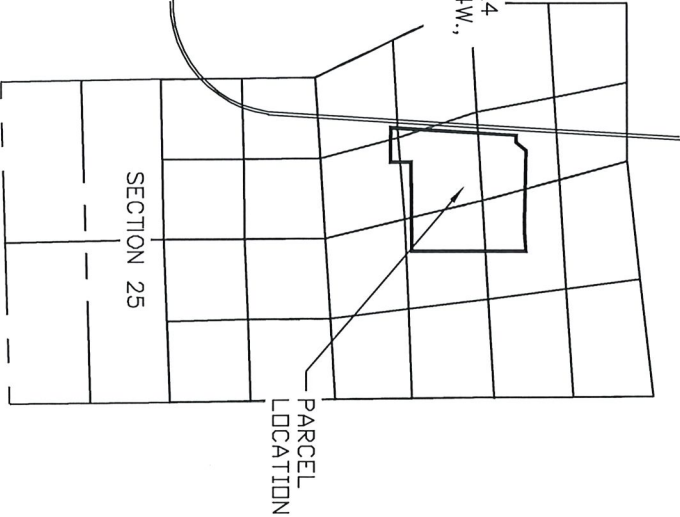


SURVEYOR'S CERTIFICATE:
I, TAD R. ROSENBLUND, DO HEREBY CERTIFY THAT THIS PLAT
WAS MADE FROM AN ACTUAL FIELD SURVEY PERFORMED BY ME
OR UNDER MY DIRECT SUPERVISION AND THAT IT CORRECTLY
SHOWS THE LOCATION TO THE BEST OF MY KNOWLEDGE.



LEGEND

- SECTION LINE
- INTERIOR SECTION LINE
- TWO TRACK ROAD
- FENCE LINE
- ADJACENT PARCEL LINE
- OVERHEAD POWERLINE
- FOUND 3.25" BRASS ROW MONUMENT
- FOUND MONUMENT AS DESCRIBED
- SET 2" ALUMINUM CAP ON 8" REBAR



LOCATION MAP
N.T.S.

The basis of bearing is Wyoming State Plane
Coordinate System, NAD 83, East Central Zone;
PAF: 1.000233; all units are U.S. survey feet.
Distances are at ground.



DOWL
WWW.DOWL.COM

EXHIBIT B
TRACT 4 SE DECKER ROAD
SITUATED IN SECTION 24, T57N, R84W, 6TH P.M., SHERIDAN
COUNTY, WYOMING

PROJECT	BLACK GOLD
DATE	8/23/2021