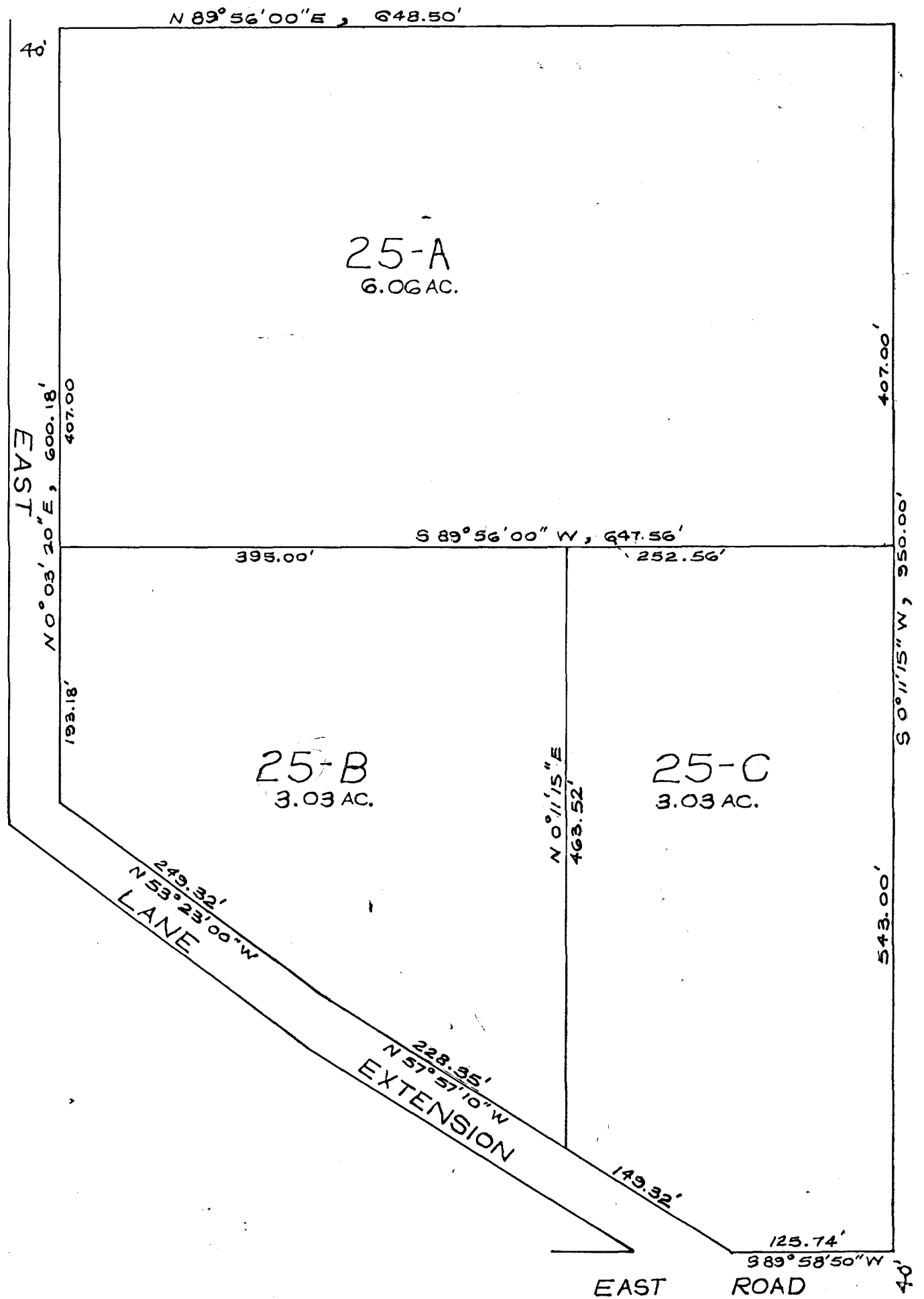


LOCATION MAP
SCALE 1"=2000'

1" = 100'



SURVEYOR'S CERTIFICATE

I, WALTER J. PILCH, A DULY REGISTERED LAND SURVEYOR IN THE STATE OF WYOMING, DO HEREBY CERTIFY THAT THIS MAP TRULY AND CORRECTLY REPRESENTS THE RESULTS OF A SURVEY MADE BY ME OR UNDER MY DIRECT SUPERVISION.

Walter J. Pilch
WALTER J. PILCH
WYOMING R.E. & L.S. NO. 537

PLANNING COMMISSION APPROVAL

APPROVED BY THE SHERIDAN COUNTY PLANNING COMMISSION
THIS 20TH DAY OF SEPTEMBER, 1977.

ATTEST:

Daryl R. Daly
CHAIRMAN OF THE SHER. CO. PLAN. COMM.

Milton Myland
SECRETARY

COUNTY COMMISSIONER'S APPROVAL

APPROVED BY THE SHERIDAN COUNTY BOARD OF COUNTY COMMISSIONERS THIS 20TH DAY OF SEPTEMBER, 1977.

ATTEST:

William J. Laya
CHAIRMAN OF THE BOARD

Margaret Lewis
CLERK OF THE BOARD

APPROACHES

All approaches to the County Road shall be provided with adequate drainage culverts. Culverts shall be a minimum of 18" in diameter and 20 feet in length. Approaches shall be approved by the, County Road Department.

DESCRIPTION

A TRACT OF LAND LOCATED IN THE E4SW4 OF SECTION 23, T 55 N, R 84 W, SHERIDAN COUNTY WYOMING, DESCRIBED AS FOLLOWS: Tracts 24, 25 and 26 of the amended plat of a portion of McNally Third Subdivision, T55N, R84W, 6th P.M., Sheridan County, Wyoming.

EASEMENTS

Easements of 10 feet on each side of the property lines are hereby reserved for poles, wires, pipes and conduits for heating, lighting, electricity, gas, telephone, sewer, water or other public, cable television, or quasi public utility service purposes, together with the right of entry at anytime for the purpose of further construction and repair.

CERTIFICATE OF DEDICATION

THE ABOVE OR FOREGOING SUBDIVISION OF LANDS LOCATED IN SECTION 23, T 55 N, R 84 W, AS APPEARS ON THIS PLAT, IS WITH THE FREE CONSENT, AND IN ACCORDANCE WITH THE DESIRES OF THE UNDERSIGNED OWNERS AND PROPRIETORS, CONTAINING 12.12 ACRES MORE OR LESS. ALL ROADS ARE HEREBY DEDICATED FOR PUBLIC USE.
WITNESS OUR HANDS AND SEALS THIS 20TH DAY OF SEPTEMBER, 1977.

Darroll F. Miller David J. Withrow
Caroline A. Miller Marilyn N. Withrow

STATE OF WYOMING) SS
COUNTY OF SHERIDAN)

THE FOREGOING INSTRUMENT WAS ACKNOWLEDGED BEFORE ME BY: DARROLL F. MILLER & CAROLINE A. MILLER
DAVID J. WITHROW & MARILYN N. WITHROW
THIS 20TH DAY OF SEPTEMBER, 1977 WITNESS MY HAND AND OFFICIAL SEAL.

MY COMMISSION EXPIRES Olga M. Pilch
1-15, 1978. Notary Public

CERTIFICATION OF RECORDER

STATE OF WYOMING) SS
COUNTY OF SHERIDAN)

I HEREBY CERTIFY THAT THIS PLAT WAS FILED FOR RECORD IN MY OFFICE AT 1:45 PM ON THIS 29 DAY OF SEPTEMBER, 1977 AND RECORDED IN PLAT BOOK NO. 1 ON PAGE 187
NO 719293

Margaret Lewis
COUNTY CLERK

DEPUTY

AMENDED PLAT OF THE
AMENDED PLAT OF A PORTION
OF McNALLY THIRD SUBDIVISION

BEING A SUBDIVISION OF TRACTS 24, 25, 26

SHERIDAN COUNTY, WYOMING