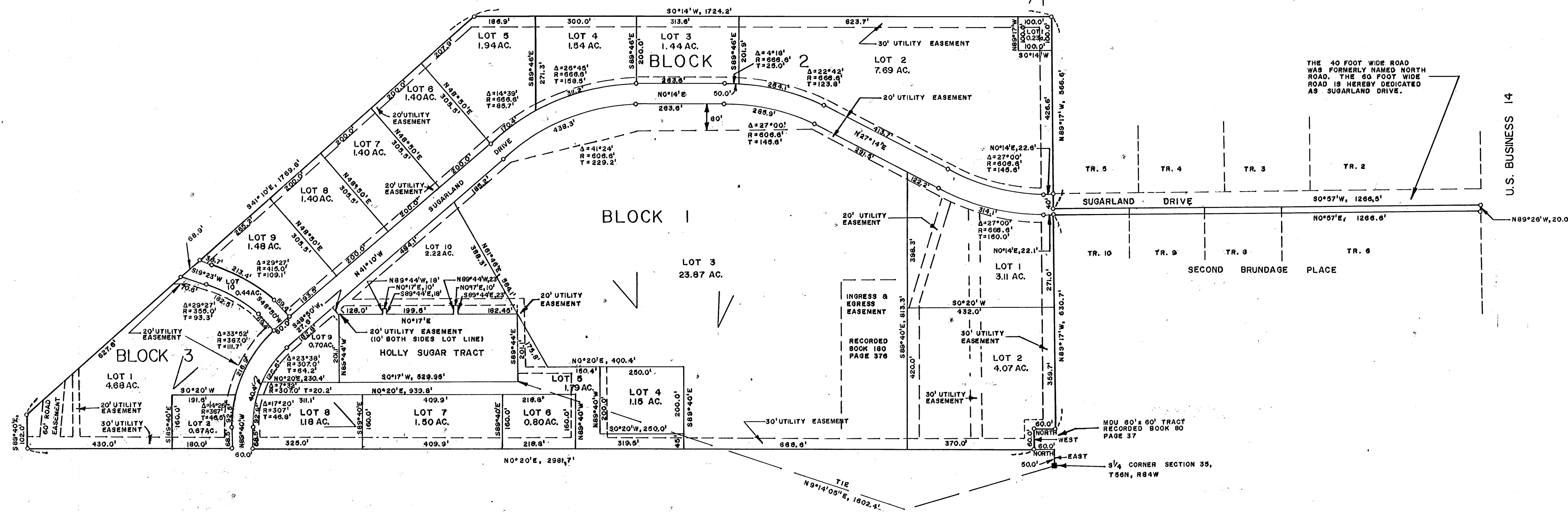
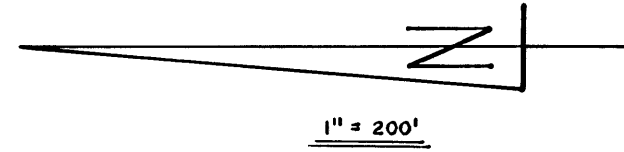


LOCATION MAP
SCALE 1"=2000'



DESCRIPTION

A tract of land located in the W 1/2 SE 1/4 and SW 1/4 NE 1/4 of Section 35, T56N, R84W, 6th P.M., and tracts 6, 8, 9, and 10, 2nd Brundage Place, City of Sheridan, Sheridan County, Wyoming, described as follows,

Beginning at a point on the easterly right-of-way of U.S. Highway Business 14 and 87, said point being located east, 50 feet and north, 60 feet from the S 1/4 corner of said section 35; thence along said easterly right-of-way N0°20'E, 2981.7 feet to a point; thence S89°40'E, 102.0 feet to a point; thence S41°10'E, 1769.6 feet to a point on the westerly right-of-way line of Interstate Highway 90; thence along said right-of-way, S0°14'W, 1724.2 feet to the south line of said SW 1/4 NE 1/4; thence along said south line, N89°17'W, 566.6 feet to a point on the west line of north road; thence along the west line of said north road, S0°57'W, 1266.5 feet to a point on the north line of U.S. Highway Business 14, said point also being the SE corner of said tract 6, thence along the south line of said tract 6, N89°26'W, 20.0 feet to a point; thence N0°57'E, 1266.6 feet to a point on the north line of said 2nd Brundage Place; thence N89°17'W, 630.7 feet to a point; thence north 60 feet to a point; thence west, 60 feet to the point of beginning.

And excepting the Holly Sugar Tract described as follows:

Beginning at a point located N9°14'05"E, 1602.4 feet from the S 1/4 corner of said section 35; thence S89°44'E, 201.1 feet to a point; thence N0°17'E, 182.45 feet to a point; thence S89°44'E, 23 feet to a point; thence N0°17'E, 10 feet to a point; thence N89°44'W, 23 feet to a point; thence 0°17'E, 199.5 feet to a point; thence S89°44'E, 18 feet to a point; thence 0°17'E, 10 feet to a point; thence S89°44'W, 18 feet to a point; thence N0°17'E, 128.0 feet to a point; thence N89°44'W, 201.1 feet to a point; thence S0°17'W, 529.95 feet to the point of beginning.

And excepting a 20 foot wide strip of land hereby dedicated for street purposes adjacent to a 40 foot wide road named NORTH ROAD in Second Brundage Place, said 20 foot strip and 40 foot road form a 60 foot road hereby named Sugarland Drive, said 20 foot strip is described as follows:

Beginning at the SE corner of tract 6, Second Brundage Place; thence along the south line of said tract 6, N89°26'W, 20.0 feet to a point; thence N0°57'E, 1266.6 feet to a point on the north line of said 2nd Brundage Place thence along said north line, S89°17'E, 20.0 feet to the west line of North Road; thence along said west line, S0°57'W, 1266.5 feet to the point of beginning.

CERTIFICATE OF DEDICATION

THE ABOVE OR FOREGOING SUBDIVISION OF PT. SW 1/4 NE 1/4, PT. W 1/2 SE 1/4, SEC. 35, T56N, R84W AS APPEARS ON THIS PLAT WITH THE FREE CONSENT, AND IN ACCORDANCE WITH THE DESIRES OF THE UNDERSIGNED OWNERS AND PROPRIETORS, CONTAINING 7.85 ACRES MORE OR LESS, HAVE BY THESE PRESENTS LAID OUT, AND SURVEYED AS SUGARLAND SOUTH AND DO HEREBY DEDICATE AND CONVEY TO AND FOR PUBLIC USE FOR EVER HEREAFTER THE STREETS AS ARE LAID OUT AND DESIGNATED ON THIS PLAT, WITNESS OUR HANDS AND SEALS THIS 17th DAY OF September, A.D., 1981.

HEREBY RELEASING AND WAIVING ALL RIGHTS UNDER AND BY VIRTUE OF 'HOMESTEAD EXEMPTION LAWS OF THE STATE OF WYOMING.

BY: SUGAR LAND DEVELOPMENT COMPANY: A PARTNERSHIP SUGARLAND ESTATES: A GENERAL PARTNERSHIP

by: *Homer A. Scott, Jr.* a General Partner by: *Homer A. Scott, Jr.*

THE FOREGOING INSTRUMENT WAS ACKNOWLEDGED BEFORE ME BY HOMER A. SCOTT, JR. a/k/a HOMER SCOTT, JR.

THIS 17th DAY OF September, 1981. WITNESS MY HAND AND OFFICIAL SEAL.

MY COMMISSION EXPIRES March 7, 1984

MONTANA-DAKOTA UTILITIES, CO. A CORPORATION by: *William A. Schuchart* PRESIDENT

THE FOREGOING INSTRUMENT WAS ACKNOWLEDGED BEFORE ME BY J.A. SCHUCHART THIS 20th DAY OF December, 1981. WITNESS MY HAND & OFFICIAL SEAL. *William A. Schuchart* MY COMMISSION EXPIRES Jan 5, 1984

CERTIFICATE OF SURVEYOR

STATE OF WYOMING) SS
COUNTY OF SHERIDAN)

I, CHARLES E. LUXMOORE, A DULY REGISTERED LAND SURVEYOR IN THE STATE OF WYOMING HEREBY CERTIFY THAT THIS PLAT OF THE REPLAT OF SUGARLAND SOUTH TRULY AND CORRECTLY REPRESENTS THE RESULTS OF A SURVEY MADE BY ME UNDER MY DIRECTION.

WYO. REG. NO. 520

SUBSCRIBED IN MY PRESENCE AND SWORN TO ME THIS 14th DAY OF SEPTEMBER, 1981.

NOTARY PUBLIC

MY COMMISSION EXPIRES MARCH 7, 1984

APPROVAL BY THE CITY OF SHERIDAN

THE SHERIDAN CITY PLANNING AND ZONING COMMISSION HEREWITHTH RECOMMENDS THE APPROVAL AND THE FOREGOING PLAT IS HEREBY APPROVED FOR FILING BY THE UNDER-SIGNED MAYOR AND CITY CLERK IN AND FOR THE CITY OF SHERIDAN, WYOMING ON THIS 14th DAY OF September, 1981.

MAYOR *W. A. Schuchart* CITY CLERK *Arthur W. Ellis*

PLANNING COMMISSION

CHAIRMAN *Barbara J. Jurek* CLERK *Donna M. Lant*

CERTIFICATE OF RECORDER

STATE OF WYOMING) SS
COUNTY OF SHERIDAN)

I HEREBY CERTIFY THAT THIS PLAT WAS FILED FOR RECORD IN MY OFFICE AT 10:15 A.M. O'CLOCK THIS 2nd DAY OF December, 1981, AND RECORDED IN PLAT BOOK NO. 1 ON PAGE 321. NO: 831010

Margaret A. Lewis
COUNTY CLERK

DEPUTY

REPLAT
OF

SUGARLAND SOUTH

AN ADDITION TO THE
CITY of SHERIDAN
SHERIDAN COUNTY, WYOMING

PILCH ENGINEERING & SURVEYING
ENGINEERING INC. of WYOMING

SEPT. 1981

Partial Vacation 9-5-96 BK 381 p 630
Partial Vacation 8/1/97 BK 387 p 387
Partial Vacation 10-27-04 BK 457 p 600