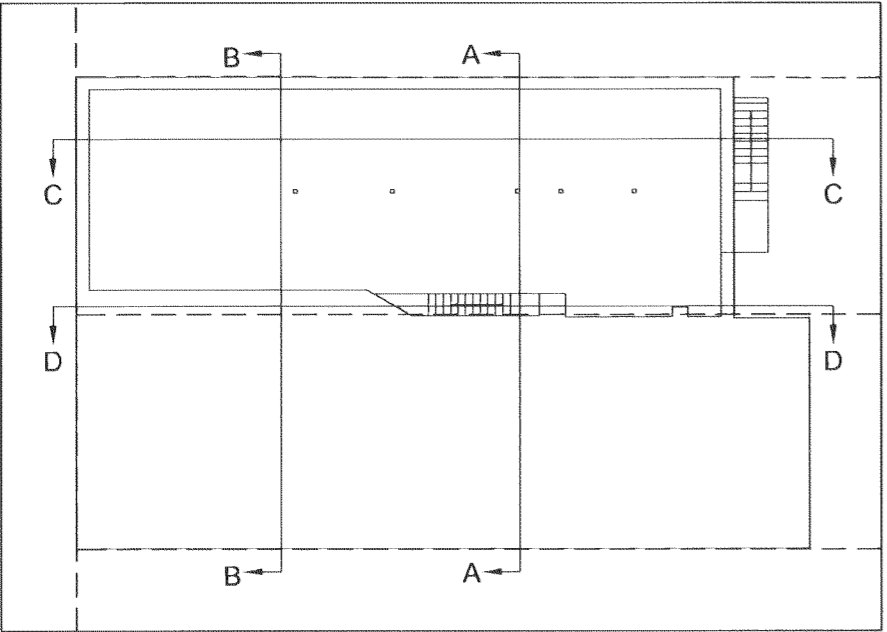


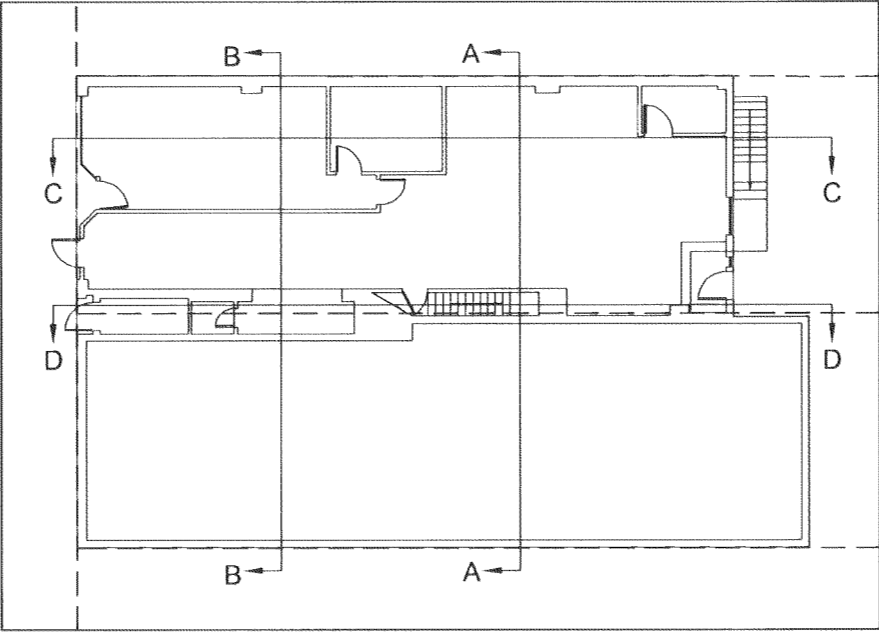
CONDOMINIUM MAP OF
THE LEW DIAMOND LOFTS

BEING A CONDOMINIUM OF LOT 13, BLOCK 2, GRINNELL ADDITION, CITY OF SHERIDAN,
LOCATED IN THE SE $\frac{1}{4}$ NE $\frac{1}{4}$, SECTION 27, T56N, R84W, 6TH P.M., SHERIDAN COUNTY, WYOMING
LOT AREA: \pm 3,739 SQUARE FEET

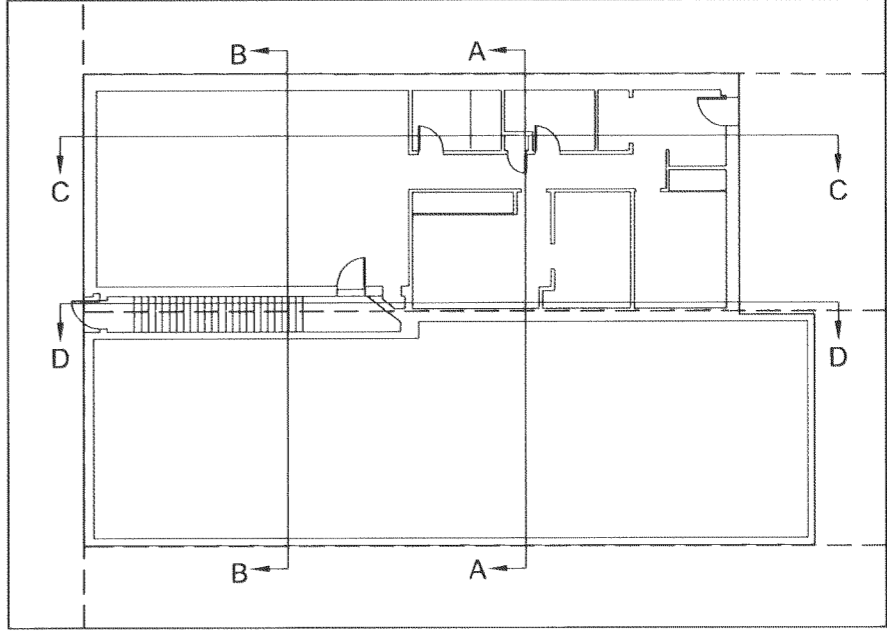
NOTICE
This plat is an image, or reproduction of the original as is recorded in the
Sheridan County Clerk's Office. It is not a certified, complete or
authoritative depiction of current property lines, easements or rights-of-
way. Delineations, measurement or representations may have occurred
since the original plat was recorded.



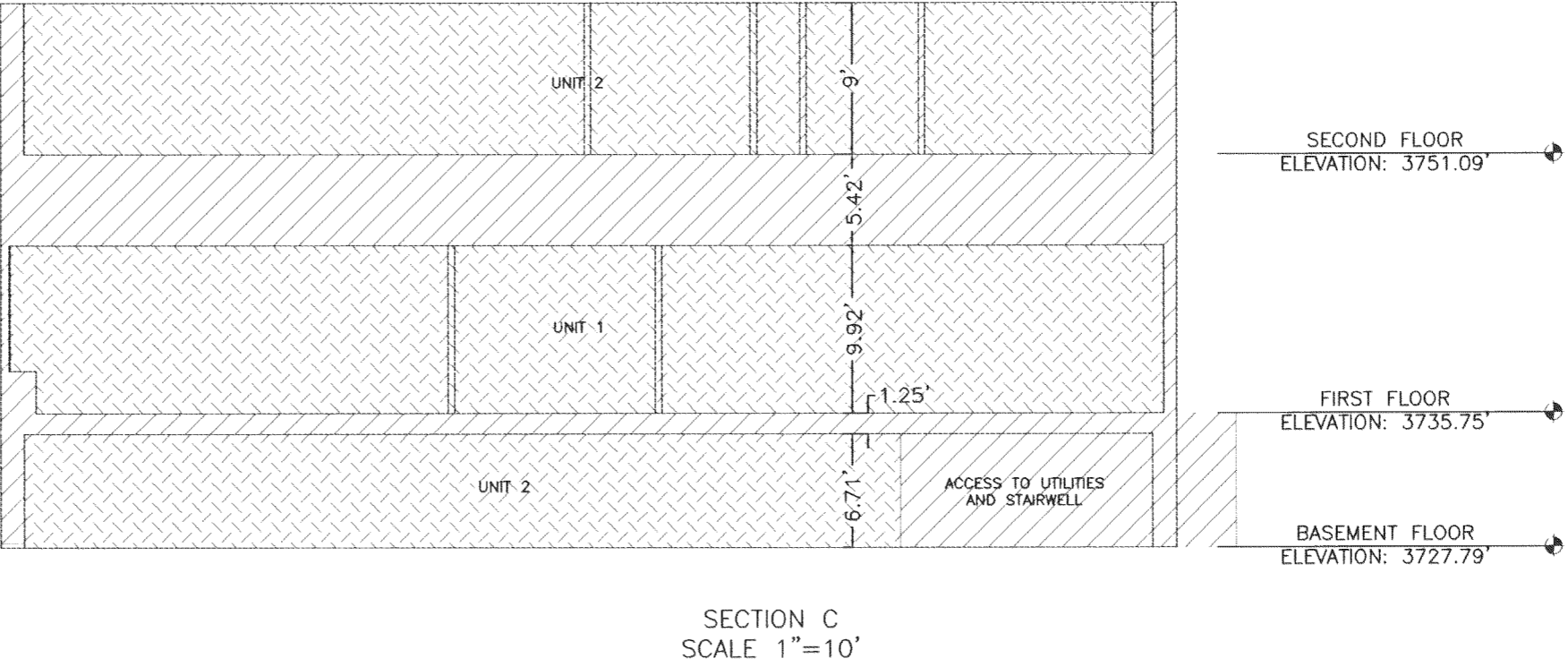
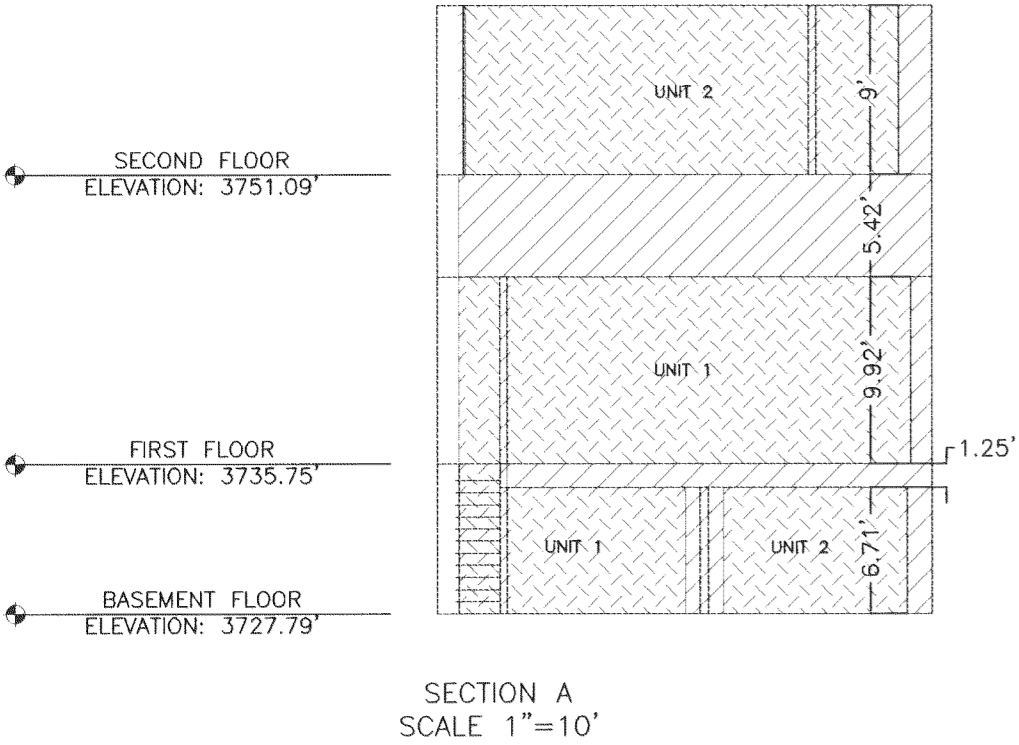
BASEMENT SECTION VIEW LAYOUT
SCALE 1"=20'



FIRST FLOOR SECTION VIEW LAYOUT
SCALE 1"=20'



SECOND FLOOR SECTION VIEW LAYOUT
SCALE 1"=20'



DEFINITIONS

THE FOLLOWING TERMINOLOGY IS IN ACCORDANCE WITH THE
CONDOMINIUM OWNERSHIP ACT, WYOMING STATUTES, 1977, AS
AMENDED, SECTION 34-20-101 THROUGH 34-20-104.

A) "UNITS" - MEANS AN INDIVIDUAL AIR SPACE UNIT TOGETHER
WITH THE INTEREST IN COMMON ELEMENTS APPURTENANT TO
SUCH UNIT, AS DESCRIBED IN THE DECLARATION OF
CONDOMINIUM OF PROSPER BUILDING FILED OF RECORD WITH
THE SHERIDAN COUNTY CLERK'S OFFICE, AS ILLUSTRATED
HEREIN.

B) "GENERAL COMMON ELEMENT" - MEANS THE AREA
DESCRIBED IN THAT DECLARATION OF CONDOMINIUM OF
PROSPER BUILDING FILED OF RECORD WITH THE SHERIDAN
COUNTY CLERK'S OFFICE, AS ILLUSTRATED HEREIN.

C) "LIMITED COMMON ELEMENT" - MEANS THE AREA DESCRIBED
IN THAT DECLARATION OF CONDOMINIUM OF PROSPER BUILDING
FILED OF RECORD WITH THE SHERIDAN COUNTY CLERK'S
OFFICE, AS ILLUSTRATED HEREIN.

NOTES:

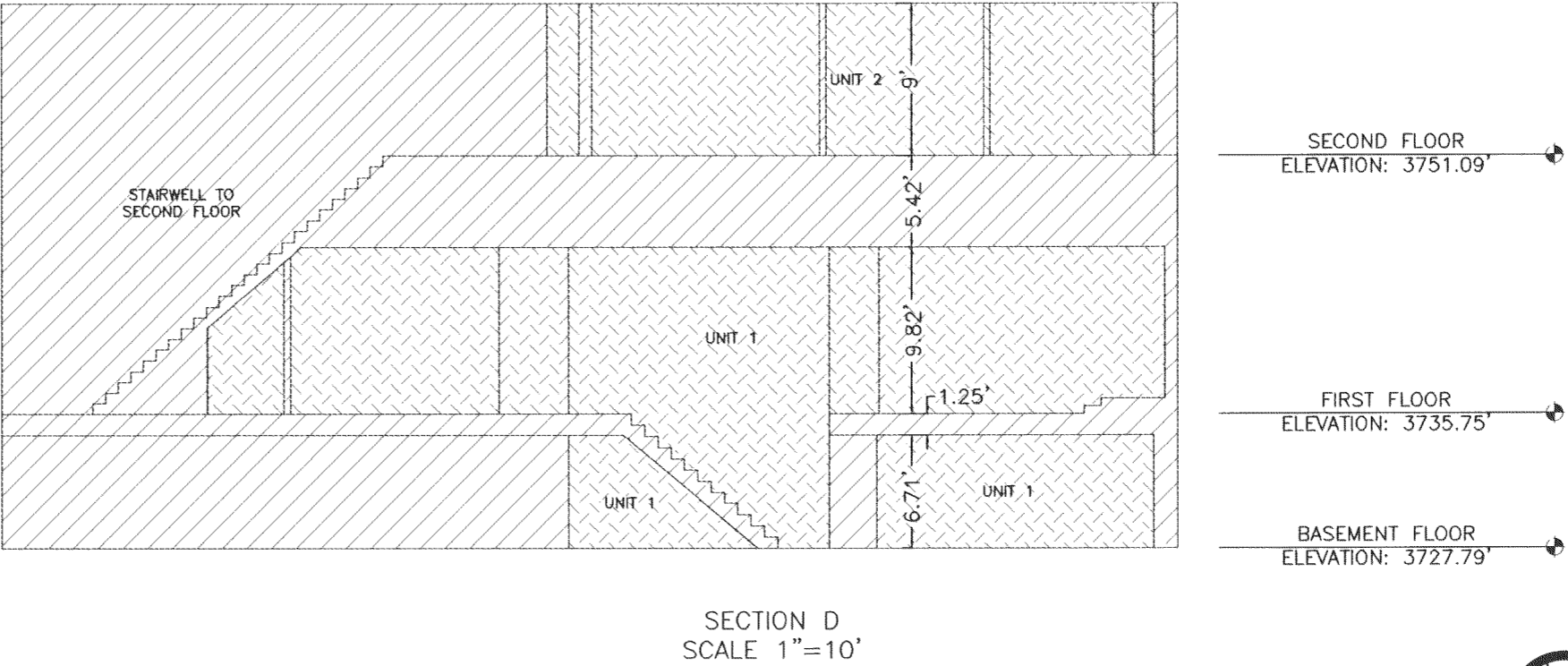
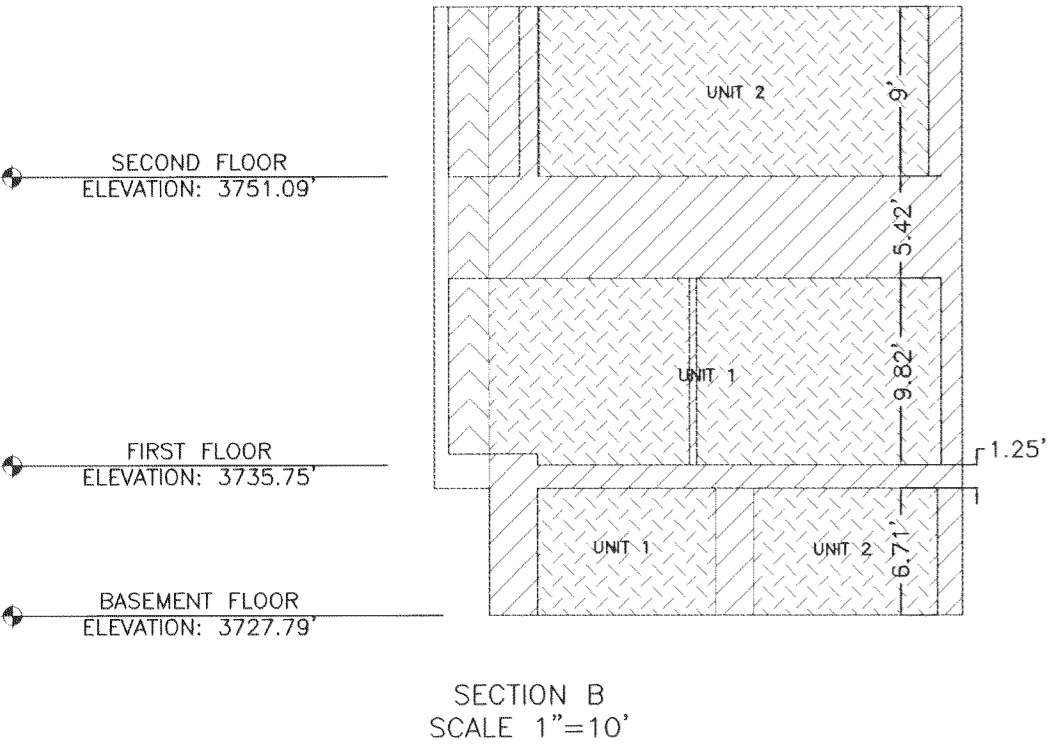
ELEVATIONS ARE NAVD88

UNIT 1 AREA:
BASEMENT: \pm 4,255.5 CUBIC FEET
FIRST FLOOR: \pm 15,778.9 CUBIC FEET

UNIT 2 AREA:
BASEMENT: \pm 3,422.1 CUBIC FEET
SECOND FLOOR: \pm 13,451.0 CUBIC FEET

LEGEND

- WALL LAYOUT
- /// GENERAL COMMON AREA
- UNIT AREA
- >>>>> ACCESS EASEMENT



THE LEW DIAMOND LOFTS
SECTIONS