

ORDINANCE NO 2007.

AN ORDINANCE vacating a portions of the access and utility easements for the East Glacier Park Subdivision as shown in Exhibits A, B, C, D, E, F, and G.

Whereas, this request for an easement vacation meets the requirements of Sheridan City Code §205; and

Whereas, the City Planning Commission having voted to recommend approval of said vacation at their October 9, 2006 regular meeting; and

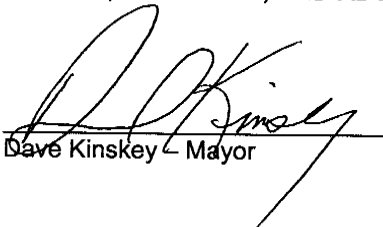
Whereas there were no negative comments from the Development Review Committee, the Planning Commission, nor from the general public meeting; therefore

BE IT ORDAINED BY THE CITY COUNCIL OF THE CITY OF SHERIDAN:

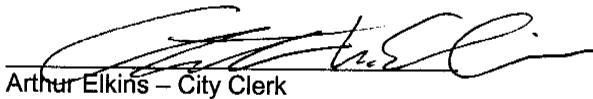
Section 1. That portions of the portions of the access and utility easements for the East Glacier Park Subdivision as shown in Exhibits A, B, C, D, E, F, and G are hereby vacated.

Section 2. That this ordinance shall be in full force and effect immediately upon its passage and publication as by law provided.

PASSED, APPROVED, AND ADOPTED this 8th day of December, 2006.


Dave Kinsley - Mayor

Attest:


Arthur Elkins - City Clerk

The above and foregoing Agreement was Subscribed, Sworn to, and Acknowledged before me this 8 day of December, 2006.

Susan M. Goodman
Notary Public

My commission expires June 12, 2010



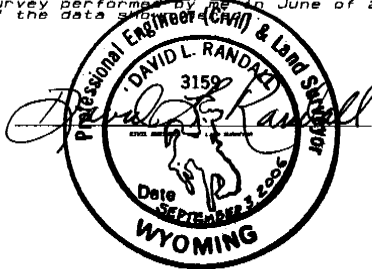
EXHIBIT "A"

CERTIFICATE of SURVEYOR

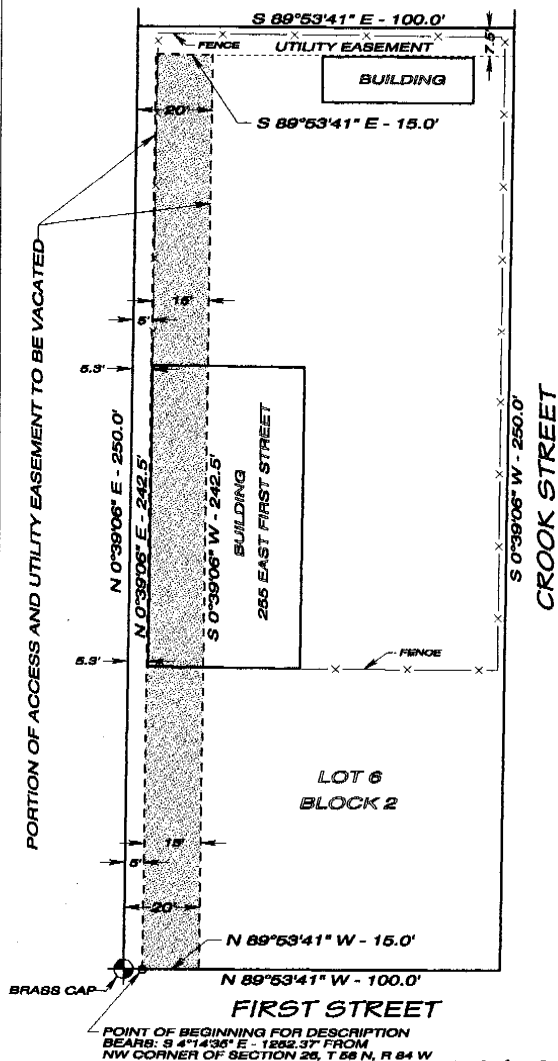
State of Wyoming } ss
County of Sheridan }

I, David L. Randall, of Sheridan, Wyoming being a duly registered Professional Engineer and Land Surveyor in the State of Wyoming do hereby certify that this map was made from field notes of an actual survey performed by me on June of 2006 and that this map correctly represents all of the data shown thereon.

Registration No. 3159 PE & LS



DETAIL



N



MAP

showing

PARTIAL VACATION of EASEMENT

in

LOT 6, BLOCK 2

EAST GLACIER PARK ADDITION

to the

CITY of SHERIDAN, WYOMING

September 03, 2006

Mr. Robert Briggs
City of Sheridan Planner
55 East Grinnell
Sheridan, Wyoming 82801

Re: Description for Proposed Access and Utility Easement Vacation in Lot 6,
Block 2, East Glacier Park Addition.

Description to Accompany Exhibit "A".

A tract of land situated in Lot 6, Block 2, East Glacier Park Addition, City of
Sheridan, Sheridan County, Wyoming; more particularly described as follows:

Beginning at a point which bears S 89°53'41" E a distance of 5.0 feet from the
Southwest Corner of said Lot 6, Block 2, this point of beginning also bears S 4°14'35" E
a distance of 1,252.37 feet from the Northwest Corner of Section 26, Township 56
North, Range 84 West of the Sixth Principal Meridian, Sheridan County, Wyoming;
thence N 0°39'06" E for a distance of 242.5 feet; thence S 89°53'41" E for a distance of
15.0 feet; thence S 0°39'06" W for a distance of 242.5 feet; thence N 89°53'41" W for a
distance of 15.0 feet to the point of beginning.

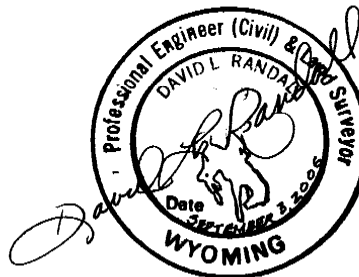


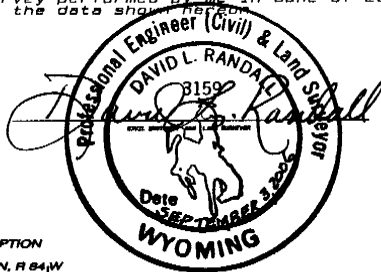
EXHIBIT "B"

CERTIFICATE of SURVEYOR

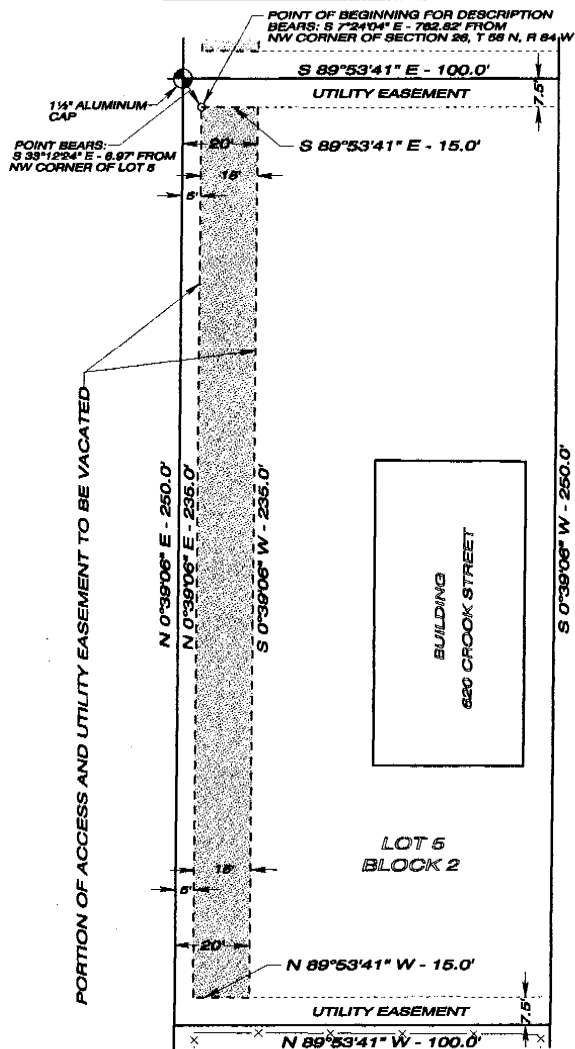
State of Wyoming } ss
County of Sheridan }

I, David L. Randall, of Sheridan, Wyoming being a duly registered Professional Engineer and Land Surveyor in the State of Wyoming do hereby certify that this map was made from field notes of an actual survey performed by me in June of 2006 and that this map correctly represents all of the data shown hereon.

Registration No. 3159 PE & LS



DETAIL



N

GRAPHIC SCALE 1"=40'

0 20 40 60

MAP

showing

PARTIAL VACATION of EASEMENT

in

LOT 5, BLOCK 2
EAST GLACIER PARK ADDITION

to the

CITY of SHERIDAN, WYOMING

DRAWN BY REX RANDALL - AUGUST 17, 2006
RANDALL ENGINEERING SURVEYS - SHERIDAN, WYOMING

September 03, 2006

Mr. Robert Briggs
City of Sheridan Planner
55 East Grinnell
Sheridan, Wyoming 82801

Re: Description for Proposed Access and Utility Easement Vacation in Lot 5,
Block 2, East Glacier Park Addition.

Description to Accompany Exhibit "B".

A tract of land situated in Lot 5, Block 2, East Glacier Park Addition, City of
Sheridan, Sheridan County, Wyoming; more particularly described as follows:

Beginning at a point which bears S 33°12'24" E a distance of 8.97 feet from the
Northwest Corner of said Lot 5, Block 2, this point of beginning also bears S 7°24'04" E
a distance of 762.82 feet from the Northwest Corner of Section 26, Township 56 North,
Range 84 West of the Sixth Principal Meridian, Sheridan County, Wyoming; thence
S 89°53'41" E for a distance of 15.0 feet; thence S 0°39'06" W for a distance of 235.0
feet; thence N 89°53'41" W for a distance of 15.0 feet; thence N 0°39'06" W for a
distance of 235.0 feet to the point of beginning.

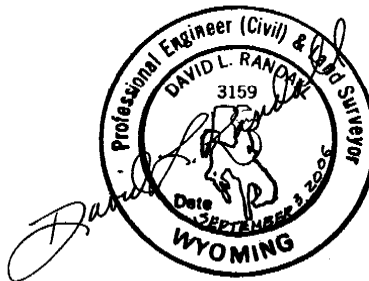


EXHIBIT "C"

CERTIFICATE of SURVEYOR

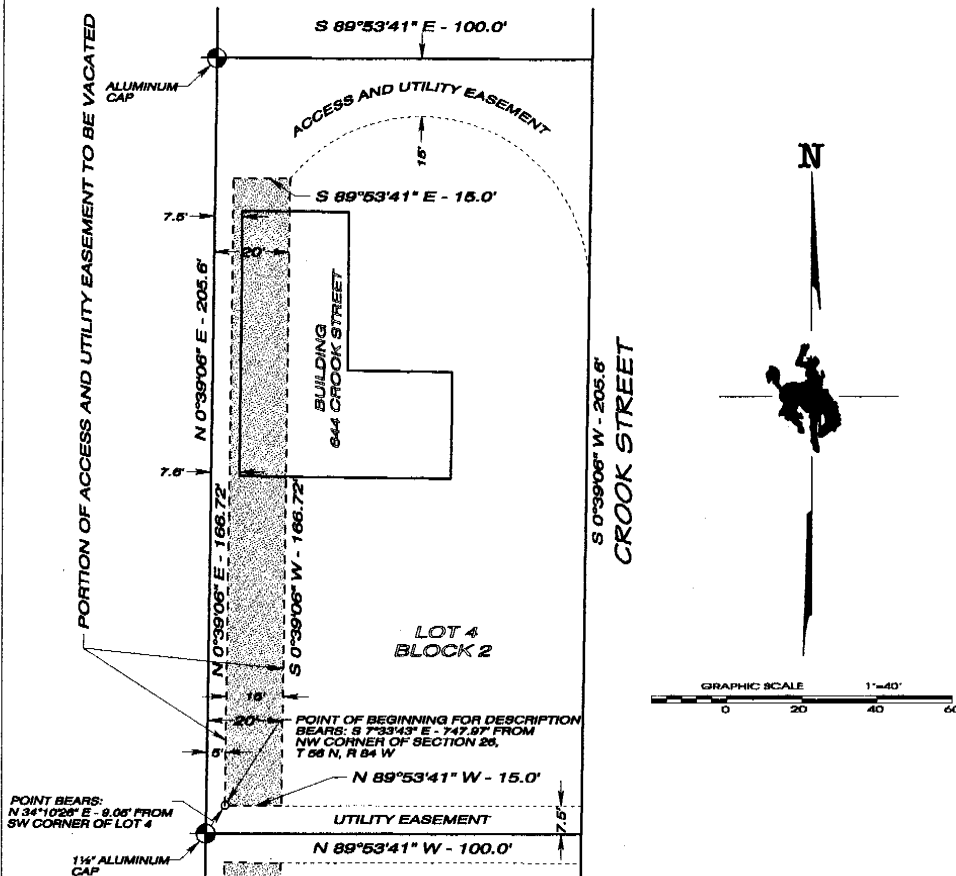
State of Wyoming
County of Sheridan

I, David L. Randall, of Sheridan, Wyoming being a duly registered Professional Engineer and Land Surveyor in the State of Wyoming do hereby certify that this map was made from field notes of an actual survey performed in June of 2006 and that this map correctly represents all of the data shown.

Registration No. 3159 PE & LS



DETAIL



MAP
showing
PARTIAL VACATION of EASEMENT
in
LOT 4, BLOCK 2
EAST GLACIER PARK ADDITION
to the
CITY of SHERIDAN, WYOMING

DRAWN BY REX RANDALL - AUGUST 17, 2006
RANDALL ENGINEERING SURVEYS - SHERIDAN, WYOMING

Phone 672-6003
Fax 672-6003

September 03, 2006

Mr. Robert Briggs
City of Sheridan Planner
55 East Grinnell
Sheridan, Wyoming 82801

Re: Description for Proposed Access and Utility Easement Vacation in Lot 4,
Block 2, East Glacier Park Addition.

Description to Accompany Exhibit "C".

A tract of land situated in Lot 4, Block 2, East Glacier Park Addition, City of
Sheridan, Sheridan County, Wyoming; more particularly described as follows:

Beginning at a point which bears N 34°10'26" E a distance of 9.05 feet from the
Southwest Corner of said Lot 4, Block 2, this point of beginning also bears S 7°33'43" E
a distance of 747.97 feet from the Northwest Corner of Section 26, Township 56 North,
Range 84 West of the Sixth Principal Meridian, Sheridan County, Wyoming; thence
N 0°39'06" E for a distance of 166.72 feet; thence S 89°53'41" E for a distance of 15.0
feet; thence S 0°39'06" W for a distance of 166.72 feet; thence N 89°53'41" W for a
distance of 15.0 feet to the point of beginning.



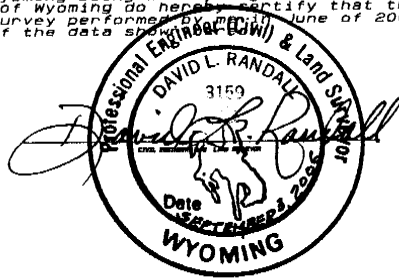
EXHIBIT "D"

CERTIFICATE of SURVEYOR

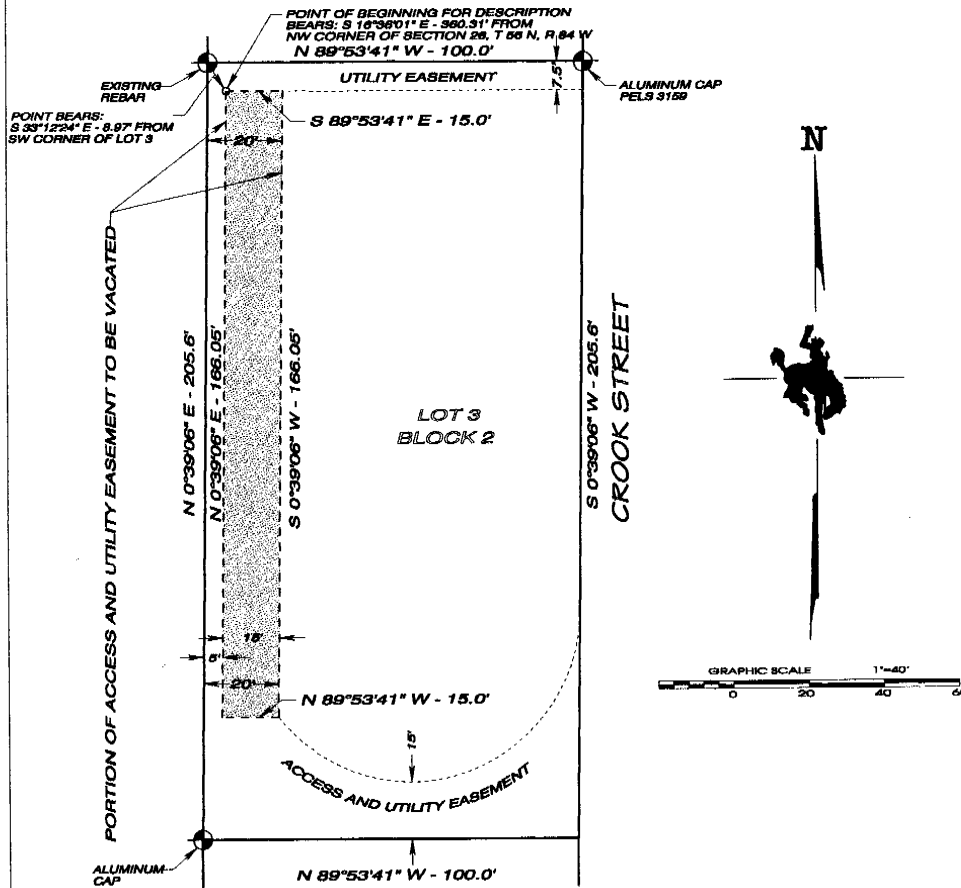
State of Wyoming } ss
County of Sheridan }

I, David L. Randall, of Sheridan, Wyoming being a duly registered Professional Engineer and Land Surveyor in the State of Wyoming do hereby certify that this map was made from field notes of an actual survey performed by me on June of 2006 and that this map correctly represents all of the data shown.

Registration No. 3159 PE & LS



DETAIL



MAP

showing

PARTIAL VACATION of EASEMENT

in

LOT 3, BLOCK 2
EAST GLACIER PARK ADDITION

to the

CITY of SHERIDAN, WYOMING

DRAWN BY REX RANDALL - AUGUST 17, 2006
RANDALL ENGINEERING SURVEYS - SHERIDAN, WYOMING

September 03, 2006

Mr. Robert Briggs
City of Sheridan Planner
55 East Grinnell
Sheridan, Wyoming 82801

Re: Description for Proposed Access and Utility Easement Vacation in Lot 3,
Block 2, East Glacier Park Addition.

Description to Accompany Exhibit "D".

A tract of land situated in Lot 3, Block 2, East Glacier Park Addition, City of
Sheridan, Sheridan County, Wyoming; more particularly described as follows:

Beginning at a point which bears S 33°12'24" E a distance of 8.97 feet from the
Northwest Corner of said Lot 3, Block 2, this point of beginning also bears
S 16°36'01" E a distance of 360.31 feet from the Northwest Corner of Section 26,
Township 56 North, Range 84 West of the Sixth Principal Meridian, Sheridan County,
Wyoming; thence S 89°53'41" E for a distance of 15.0 feet; thence S 0°39'06" W for a
distance of 166.05 feet; thence N 89°53'41" W for a distance of 15.0 feet; thence
N 0°39'06" E for a distance of 166.05 feet to the point of beginning.

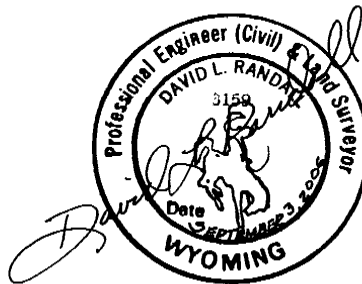


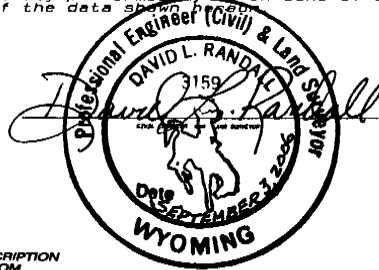
EXHIBIT "E"

CERTIFICATE of SURVEYOR

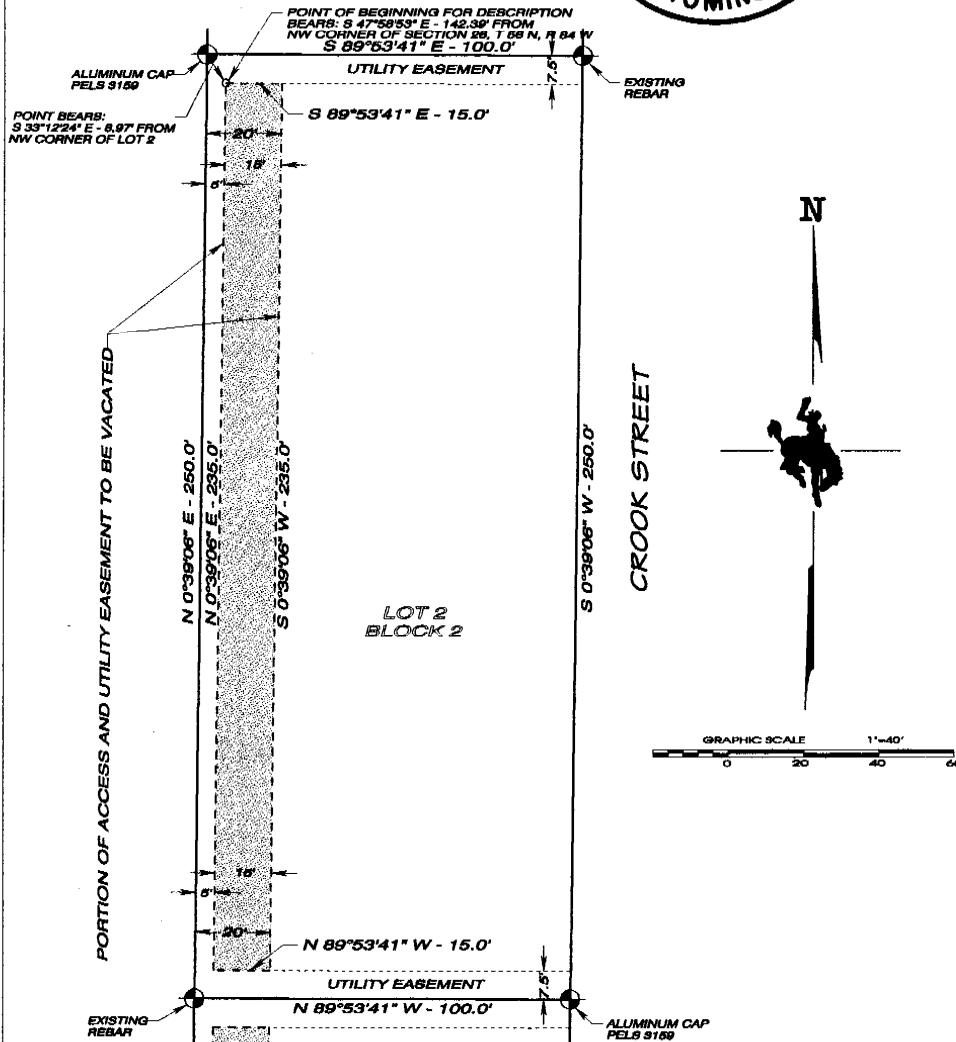
State of Wyoming } ss
County of Sheridan }

I, David L. Randall, of Sheridan, Wyoming being a duly registered Professional Engineer and Land Surveyor in the State of Wyoming do hereby certify that this map was made from field notes of an actual survey performed by me in June of 2006 and that this map correctly represents all of the data shown hereon.

Registration No. 3159 PE & LS



DETAIL



MAP

showing

PARTIAL VACATION of EASEMENT

in

LOT 2, BLOCK 2
EAST GLACIER PARK ADDITION

to the

CITY of SHERIDAN, WYOMING

September 03, 2006

Mr. Robert Briggs
City of Sheridan Planner
55 East Grinnell
Sheridan, Wyoming 82801

Re: Description for Proposed Access and Utility Easement Vacation in Lot 2,
Block 2, East Glacier Park Addition.

Description to Accompany Exhibit "E".

A tract of land situated in Lot 2, Block 2, East Glacier Park Addition, City of
Sheridan, Sheridan County, Wyoming; more particularly described as follows:

Beginning at a point which bears S 33°12'24" E a distance of 8.97 feet from the
Northwest Corner of said Lot 2, Block 2, this point of beginning also bears
S 47°58'53" E a distance of 142.39 feet from the Northwest Corner of Section 26,
Township 56 North, Range 84 West of the Sixth Principal Meridian, Sheridan County,
Wyoming; thence S 89°53'41" E for a distance of 15.0 feet; thence S 0°39'06" W for a
distance of 235.0 feet; thence N 89°53'41" W for a distance of 15.0 feet; thence
N 0°39'06" E for a distance of 235.0 feet to the point of beginning.

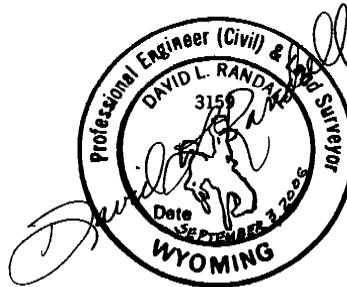


EXHIBIT "F"

CERTIFICATE of SURVEYOR

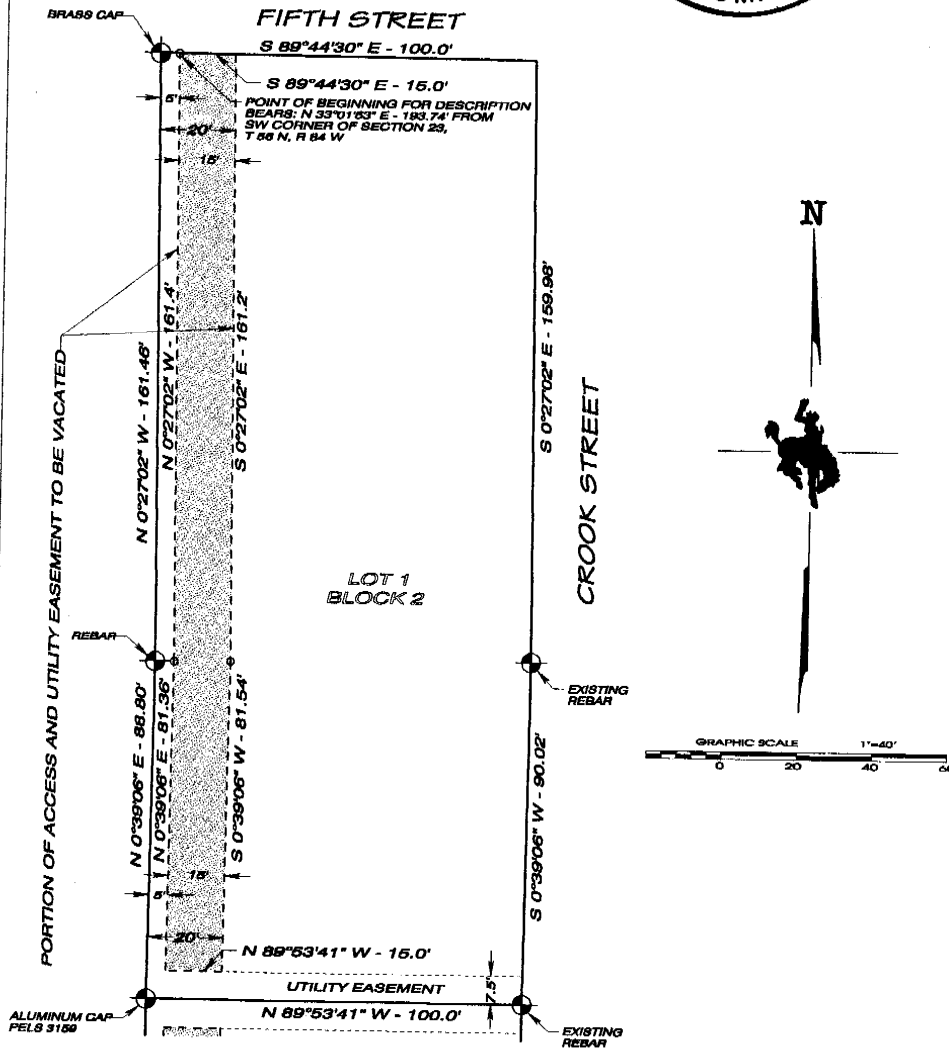
State of Wyoming } ss
County of Sheridan }

I, David L. Randall, of Sheridan, Wyoming being a duly registered Professional Engineer and Land Surveyor in the State of Wyoming do hereby certify that this map was made from field notes of an actual survey performed by me on June of 2006 and that this map correctly represents all of the data shown.

Registration No. 3159 PE & LS



DETAIL



MAP

showing

PARTIAL VACATION of EASEMENT

in

LOT 1, BLOCK 2

EAST GLACIER PARK ADDITION

to the

CITY of SHERIDAN, WYOMING

September 12, 2006

Mr. Robert Briggs
City of Sheridan Planner
55 East Grinnell
Sheridan, Wyoming 82801

Re: Description for Proposed Access and Utility Easement Vacation in Lot 1,
Block 2, East Glacier Park Addition.

Description to Accompany Exhibit "F".

A tract of land situated in Lot 1, Block 2, East Glacier Park Addition, City of
Sheridan, Sheridan County, Wyoming; more particularly described as follows:

Beginning at a point which bears S 89°44'30" E a distance of 5.0 feet from the
Northwest Corner of said Lot 1, Block 2, this point of beginning also bears
N 33°01'53" E a distance of 193.74 feet from the Southwest Corner of Section 23,
Township 56 North, Range 84 West of the Sixth Principal Meridian, Sheridan County,
Wyoming; thence S 89°44'30" E for a distance of 15.0 feet; thence S 0°27'02" E for a
distance of 161.2 feet; thence S 0°39'06" W for a distance of 81.54 feet; thence
N 89°53'41" W for a distance of 15.0 feet; thence N 0°39'06" E for a distance of 81.36
feet; thence N 0°27'02" W for a distance of 161.4 feet to the point of beginning.

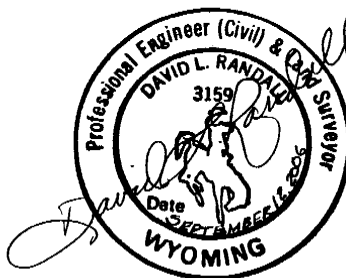


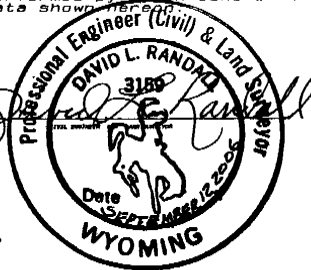
EXHIBIT "G"

CERTIFICATE of SURVEYOR

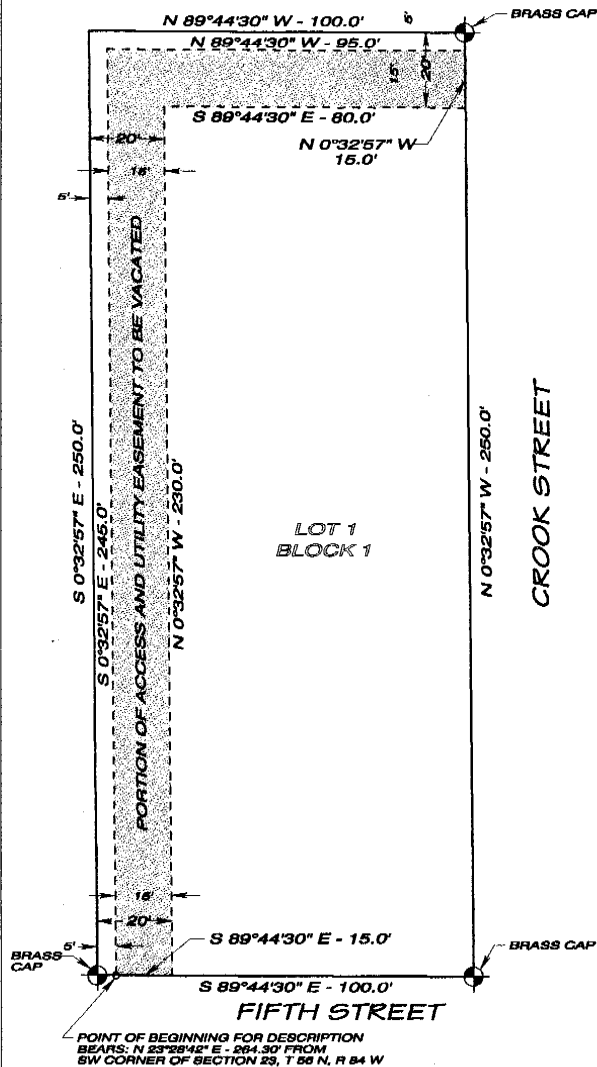
State of Wyoming } ss
County of Sheridan }

I, David L. Randall, of Sheridan, Wyoming being a duly registered Professional Engineer and Land Surveyor in the State of Wyoming do hereby certify that this map was made from field notes of an actual survey performed by me in June of 2006 and that this map correctly represents all of the data shown hereon.

Registration No. 3159 PE & LS



DETAIL



MAP

showing

PARTIAL VACATION of EASEMENT

in

LOT 1, BLOCK 1
EAST GLACIER PARK ADDITION

to the

CITY of SHERIDAN, WYOMING

DRAWN BY DAVE RANDALL - SEPTEMBER 12, 2006
RANDALL ENGINEERING SURVEYS - SHERIDAN, WYOMING

September 12, 2006

Mr. Robert Briggs
City of Sheridan Planner
55 East Grinnell
Sheridan, Wyoming 82801

Re: Description for Proposed Access and Utility Easement Vacation in Lot 1,
Block 1, East Glacier Park Addition.

Description to Accompany Exhibit "G".

A tract of land situated in Lot 1, Block 1, East Glacier Park Addition, City of
Sheridan, Sheridan County, Wyoming; more particularly described as follows:

Beginning at a point which bears S 89°44'30" E a distance of 5.0 feet from the
Southwest Corner of said Lot 1, Block 1, this point of beginning also bears
N 33°01'53" E a distance of 264.30 feet from the Southwest Corner of Section 23,
Township 56 North, Range 84 West of the Sixth Principal Meridian, Sheridan County,
Wyoming; thence S 89°44'30" E for a distance of 15.0 feet; N 0°32'57" W for a distance
of 230.0 feet; thence S 89°44'30" E for a distance of 80.0 feet; thence N 0°32'57" W for
a distance of 15.0 feet; thence N 89°44'30" W for a distance of 95.0 feet; thence
S 0°32'57" E for a distance of 245.0 feet to the point of beginning.

