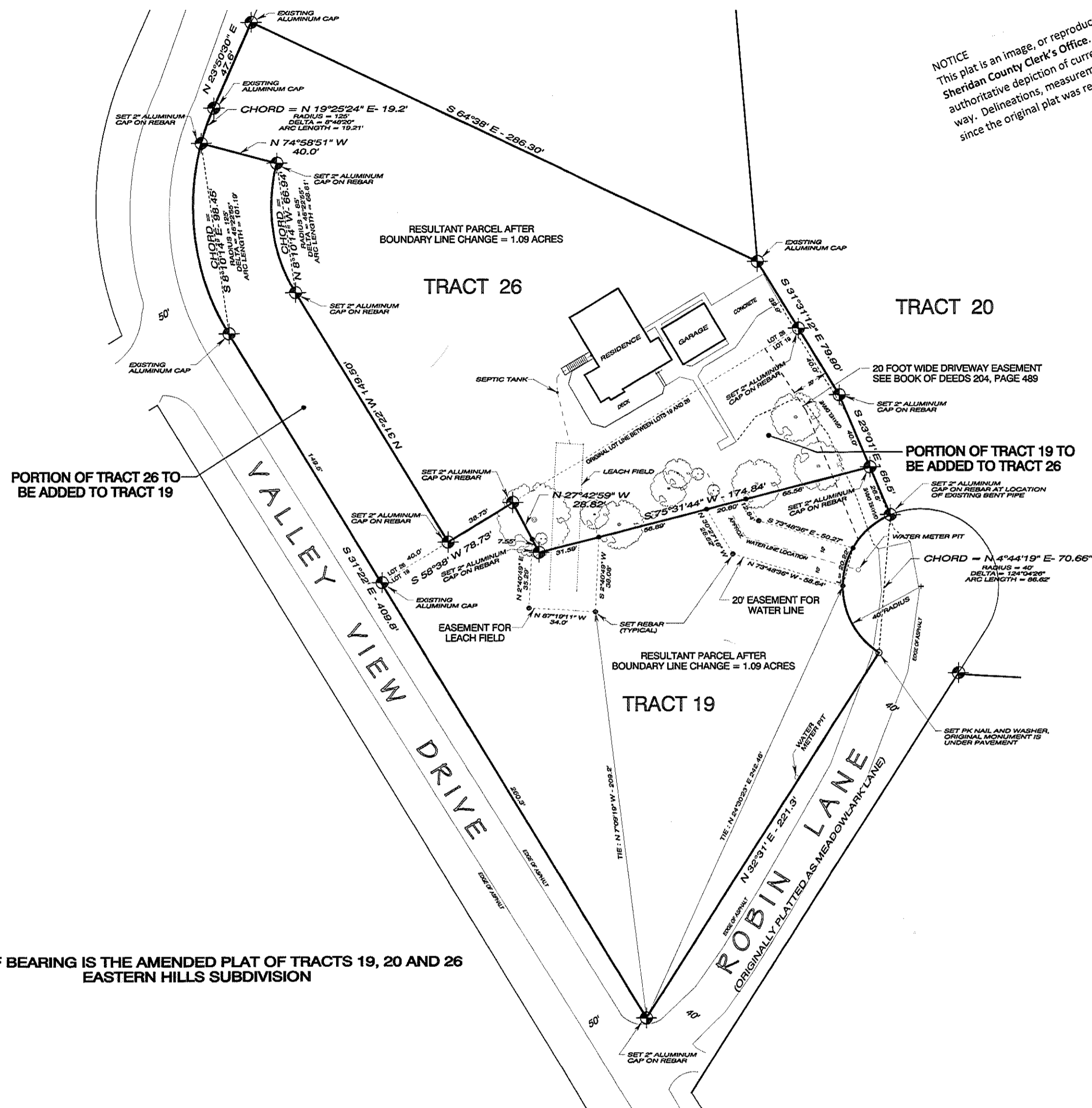


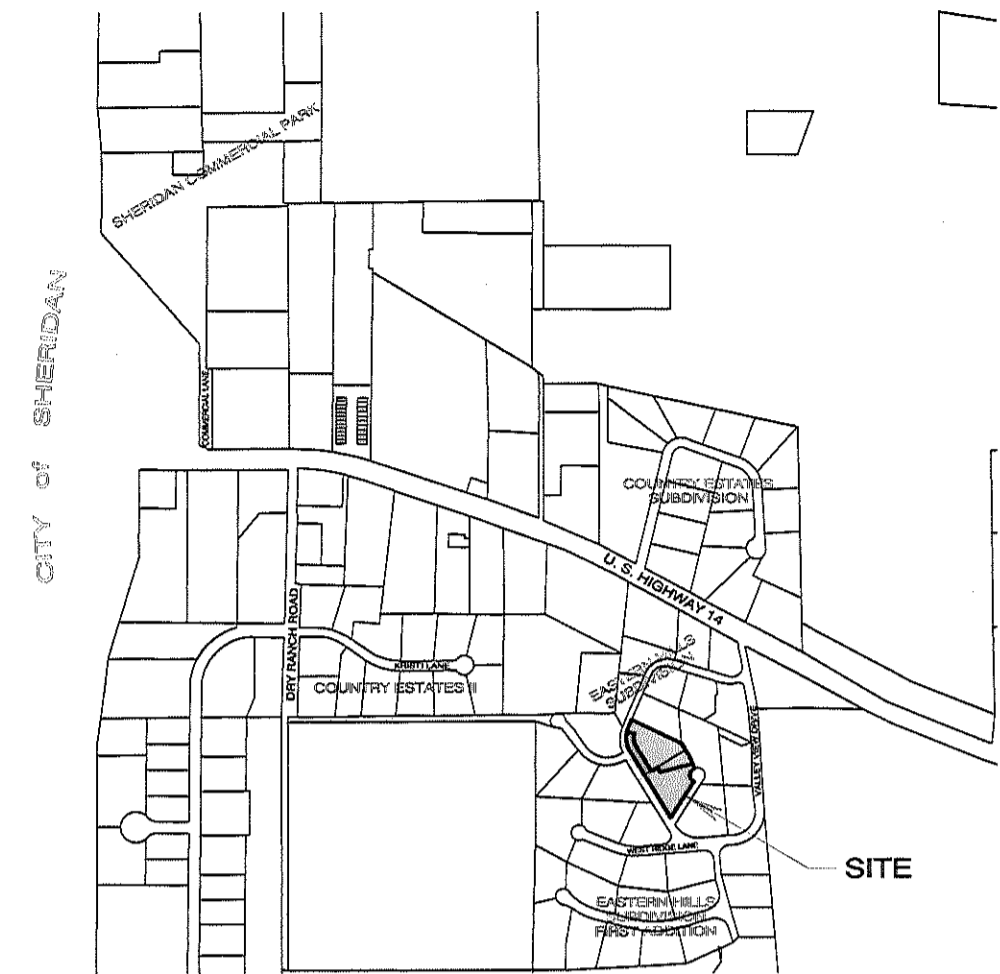
# DETAIL

GRAPHIC SCALE : 1"=50'



# LOCATION

SCALE : 1" = 1000'



N



## SITE PLAN

to accompany

## APPLICATION for BOUNDARY LINE ADJUSTMENT

showing

## STRUCTURES and PHYSICAL FEATURES

situated on

## TRACTS 19 and 26

of the

## AMENDED PLAT of TRACTS 19, 20 and 26, EASTERN HILLS SUBDIVISION

in

## SHERIDAN COUNTY, WYOMING

APPLICANT

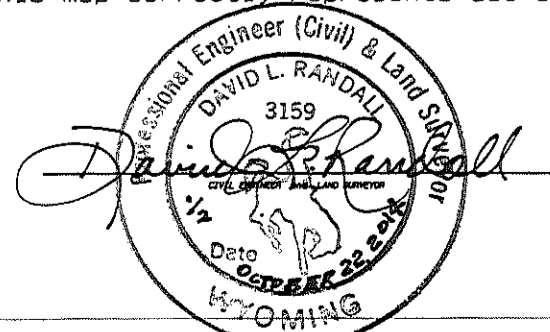
LINDA A. ROBBINS

6 ROBIN LANE  
SHERIDAN, WYOMING 82801

## CERTIFICATE of SURVEYOR

State of Wyoming } ss  
County of Sheridan }

I, David L. Randall, of Sheridan, Wyoming being a duly registered Professional Engineer and Land Surveyor in the State of Wyoming do hereby certify that this map was made from an actual survey performed by me or under my direct supervision in September and October of 2014 and that this map correctly represents all of the data shown hereon.

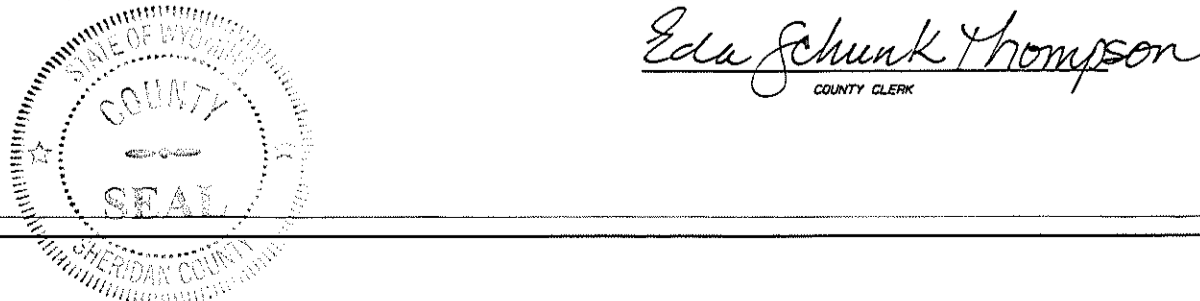


Registration No. 3159 PE & LS

## CERTIFICATE of RECORDER

State of Wyoming } ss  
County of Sheridan }

This plat was filed for record in the Office of the Clerk and Recorder at 3:52 O'Clock P.M., this 29 day of October, 2014, and is duly recorded in Book 486, Page No. 486.



DRAWN BY REX RANDALL - OCTOBER 12, 2014  
RANDALL ENGINEERING SURVEYS - SHERIDAN, WYOMING

486