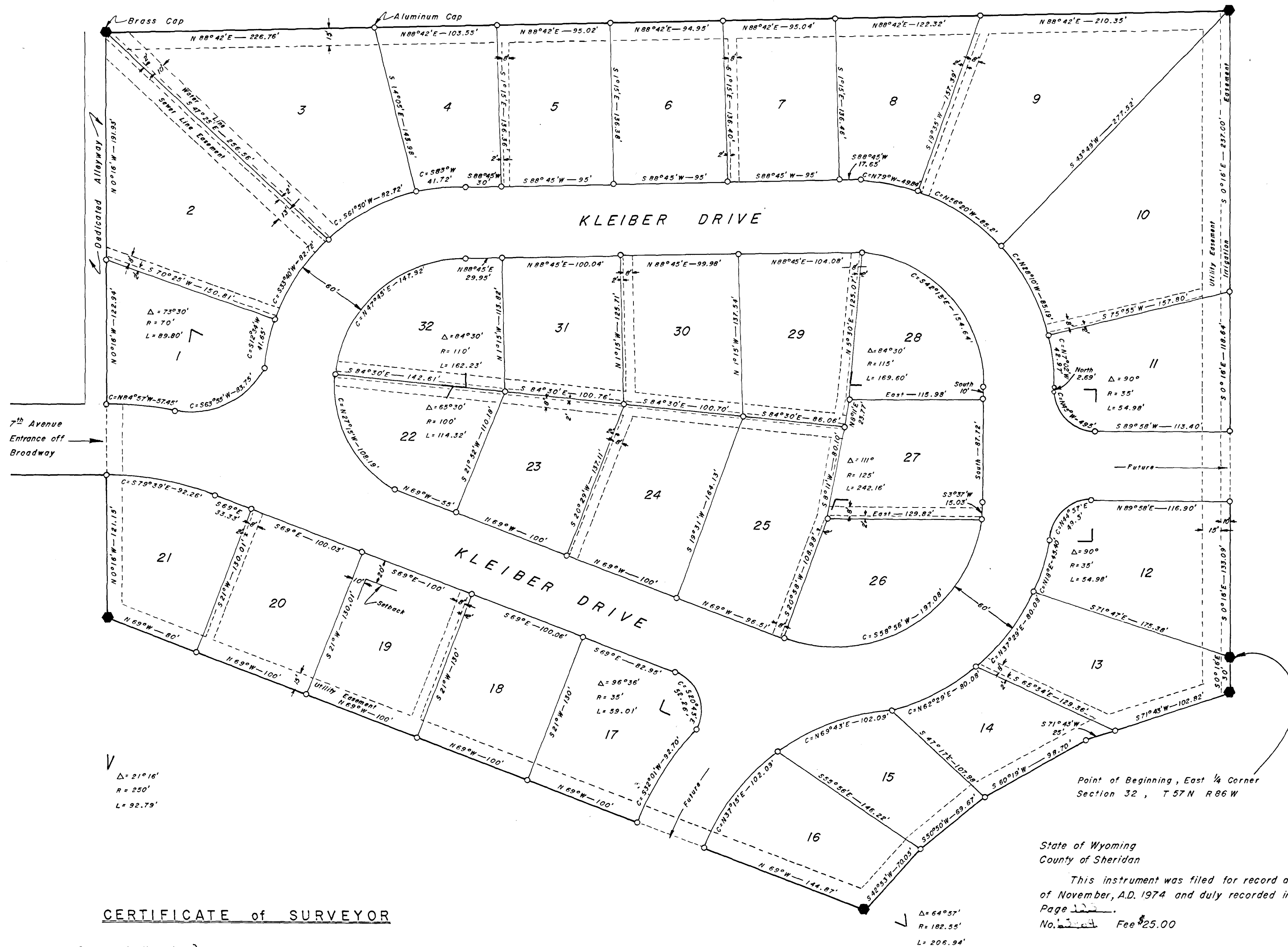


# DETAIL

SCALE: 1" = 60'



## CERTIFICATE of SURVEYOR

State of Wyoming } ss  
County of Sheridan }

I, Carl R. Oslund, of Sheridan, Wyoming, hereby certify that this plat was made from notes of actual surveys made by me during the period of January thru August of 1974, and correctly represents all the data shown thereon.

Bearings have been established from solar observations and measured horizontal angles. Distances have been chained and corrected to horizontal measurement.

All perimeter corners have been monumented with scribed brass cap monuments. All tract corners, when not a perimeter corner, as well as curve points, have been monumented with scribed aluminum caps, cemented in one and one-fourth inch by thirty inch black pipe. The black pipes are set flush with the surface.

Registration No. 102 LS

*Carl R. Oslund*  
Surveyor

Subscribed in my presence and sworn to before me this 1st day of October, 1974.

*John E. Mandelton*  
Notary Public

My commission expires May 12, 1975

## SHERIDAN COUNTY CERTIFICATE of APPROVAL

The undersigned Board of County Commissioners and the County Clerk of Sheridan County, Wyoming, hereby approve the foregoing plat and statement of dedication of the Big Horn View Subdivision.

Attest

Date 11-7-1974

Attest

Date 11-7-1974

## TOWN of DAYTON CERTIFICATE of APPROVAL

The undersigned Mayor and the Clerk of the Town of Dayton, Sheridan County, Wyoming, hereby approve the foregoing plat and statement of dedication of the Big Horn View Subdivision.

Attest

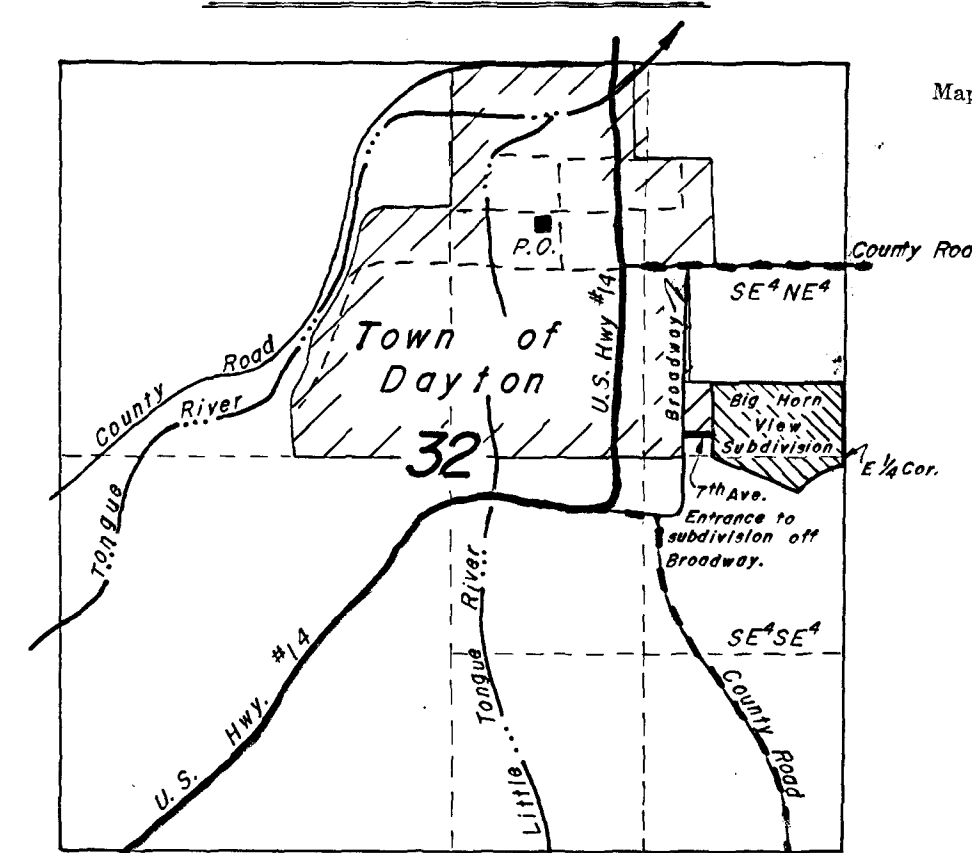
Date OCT. 1, 1974

Attest

Date OCT. 1, 1974

Annexation Data: Big Horn View Subdivision annexed to the Town of Dayton on October 7th, 1974.

# LOCATION



T57N R86W  
SCALE: 4" = 1 Mile.

## CERTIFICATE of DEDICATION

The undersigned, Ray C. and Betty L. Smith, of the Town of Dayton, Sheridan County, Wyoming, hereby certify that they are the sole owners of a tract of land particularly described as situated in the SE 1/4 NE 1/4 and NE 1/4 SE 1/4 of Section 32, T57N R86W, Sixth Principal Meridian, Wyoming, whose point of beginning is the monumented East 1/4 Corner of said Section 32; thence S 0°16'E, along the east line of Section 32, for a distance of 30'; thence S 71°43'W, a distance of 127.82'; thence S 60°19'W, a distance of 98.7'; thence S 50°50'W, a distance of 69.67'; thence S 42°53'W, a distance of 70.05'; thence N 69°W, a distance of 684.87'; thence N 0°16'W, a distance of 469.02'; thence N 88°42'E, a distance of 947.99'; thence S 0°16'E along the east line of Section 32, a distance of 548.73' to the point of beginning; subject to the easements, reservations, and rights of way of record, upon which tract just described is located as shown by the plat and surveyor's certificate, and the roads shown thereon are hereby dedicated to public use.

That along with the plat there will be filed in the County Clerk's Office, Sheridan County, Wyoming, the declaration of protective restrictions for the Big Horn View Subdivision, Sheridan County, Wyoming.

As illustrated on Lot No. 19, the front setback for all tracts is 20 (twenty) feet. The side setback line is 10 (ten) feet.

Utility easements are hereby granted to the Town of Dayton for 7.5' on each side of the water and sewer lines to be installed in Kleiber Drive, and to Mountain Bell Telephone and Montana-Dakota Utilities as indicated on the plat.

We acknowledge that this plat is made and filed with our consent and is in accord with the desires of said owners, hereby releasing and waiving Homestead Rights.

*Ray C. Smith*  
Ray C. Smith

*Betty L. Smith*  
Betty L. Smith

Subscribed in my presence and sworn to before me this 1st day of October, 1974, Ray C. Smith and Betty L. Smith.  
My commission expires on May 21, 1975.

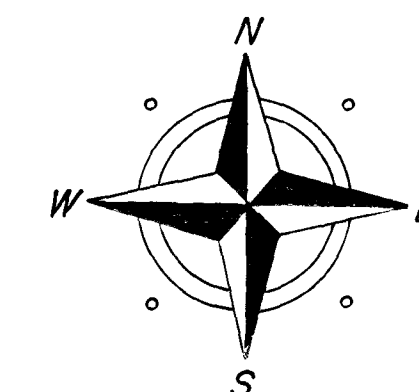
*William B. Grant*  
Notary Public

State of Wyoming  
County of Sheridan

This instrument was filed for record at 2:15 o'clock on the 1st day of November, A.D. 1974 and duly recorded in Book 122 of Plats on Page 122.  
No. 122 Fee \$25.00

County Clerk

Deputy



PLAT  
of

BIG HORN VIEW  
SUBDIVISION

SHERIDAN COUNTY, WYOMING

for

RAY C. and BETTY L. SMITH

DAYTON, WYOMING