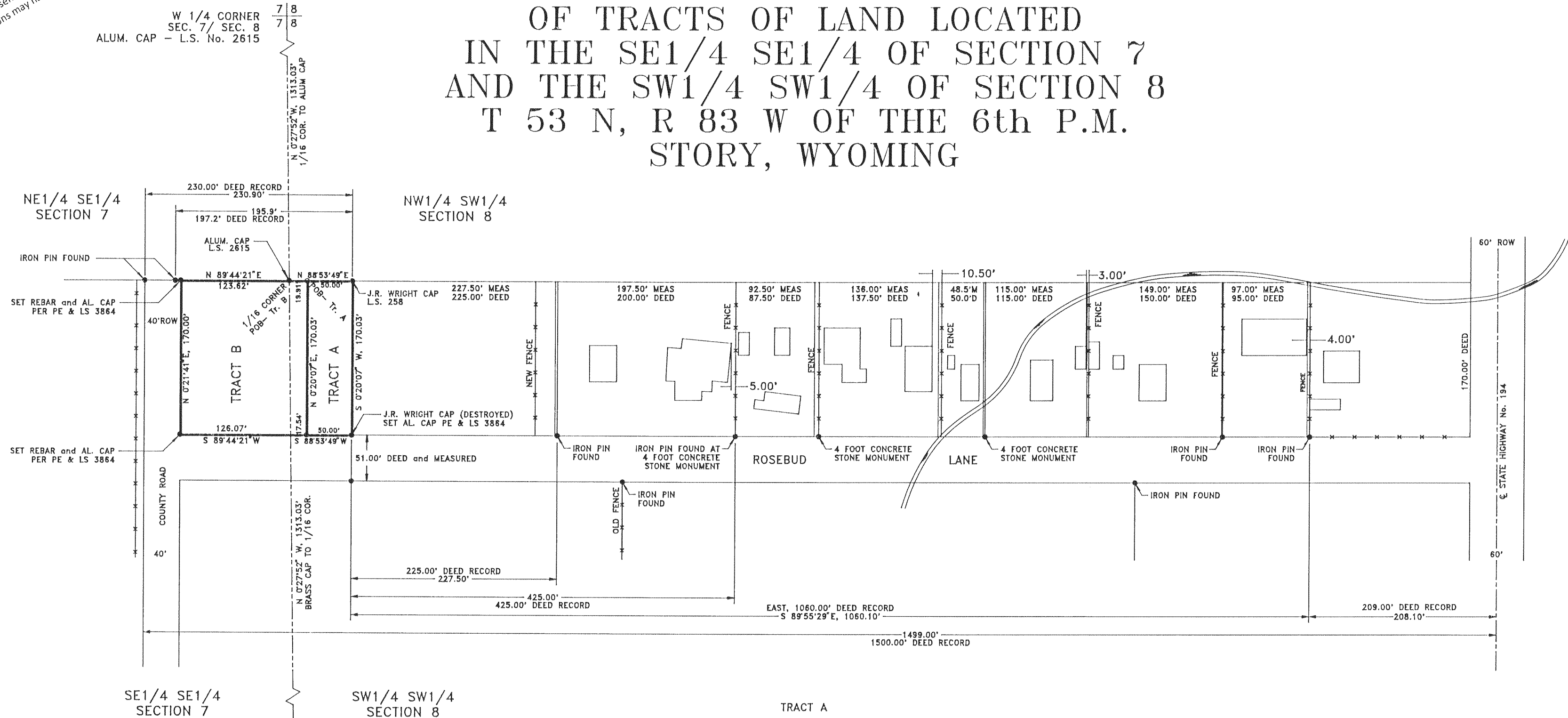


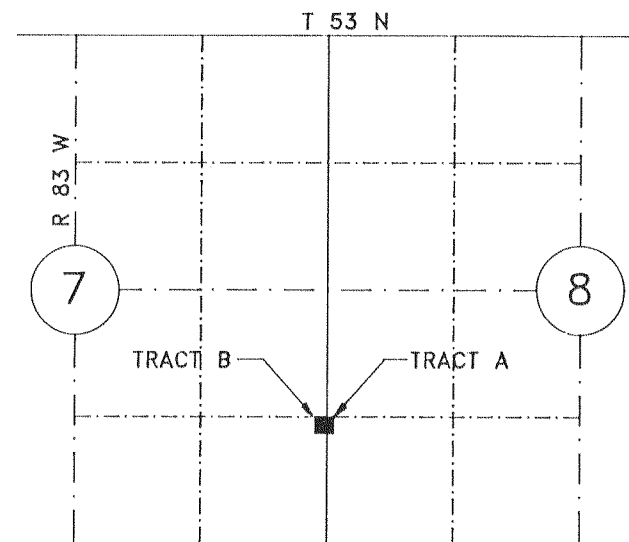
CORRECTED
CERTIFICATE of SURVEY

OF TRACTS OF LAND LOCATED
IN THE SE1/4 SE1/4 OF SECTION 7
AND THE SW1/4 SW1/4 OF SECTION 8
T 53 N, R 83 W OF THE 6th P.M.
STORY, WYOMING

NOTICE
This plat is an image, or reproduction of the original as is recorded in the
Sheridan County Clerk's Office. It is not a certified, complete or
authoritative depiction of current property lines, easements or rights-of-
way. Delineations, measurement or representations may have occurred
since the original plat was recorded.

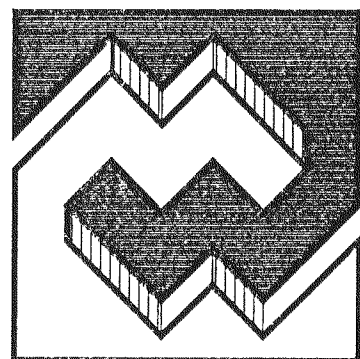


SCALE: 1" = 100'



SECTIONS 7 and 8
LOCATION MAP

SCALE: 1" = 2000'



MENTOCK-WILLEY CONSULTANTS
CONSULTING ENGINEERS AND LAND SURVEYORS

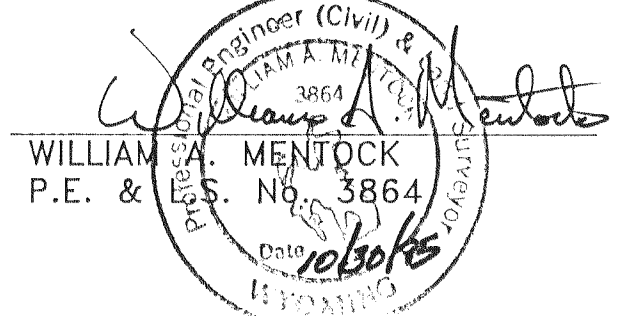
1030 NORTH MAIN STREET
No. 2 TAYLOR PLACE
SHERIDAN, WYOMING 82801

PHONE: (307) 674-4224

FAX: (307) 672-9492

CERTIFICATE of SURVEYOR

I, WILLIAM A. MENTOCK, OF SHERIDAN, WYOMING, A DULY REGISTERED PROFESSIONAL ENGINEER AND LAND SURVEYOR, DO HEREBY CERTIFY THAT THIS MAP TRULY AND CORRECTLY REPRESENTS THE RESULTS OF A SURVEY MADE BY ME OR UNDER MY DIRECT SUPERVISION.



CERTIFICATE OF RECORDER

STATE OF WYOMING }
COUNTY OF SHERIDAN } SS:

I HEREBY CERTIFY THAT THIS PLAT WAS FILED FOR RECORD IN MY OFFICE AT 9:00 O'CLOCK THIS 2 DAY OF NOVEMBER, 1995, AND FILED IN DRAWER A, PLAT NUMBER 130, INSTRUMENT NUMBER 212099, FEE \$2.00.

Ronald D. Wiley
COUNTY CLERK

DEPUTY COUNTY CLERK