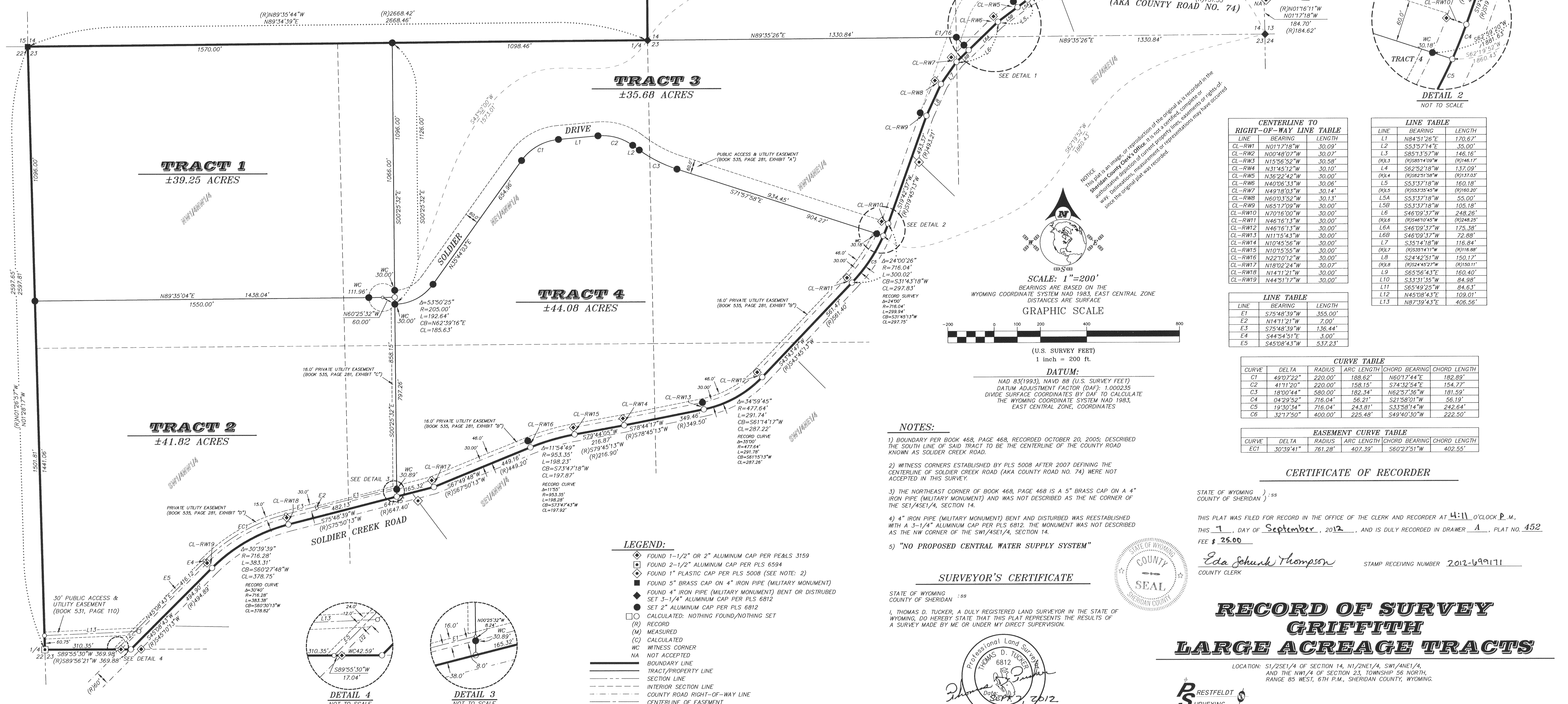


LOCATION MAP
NOT TRUE SCALE



NOTE: 4

NOTE: 3

TRACT 5
±41.55 ACRES

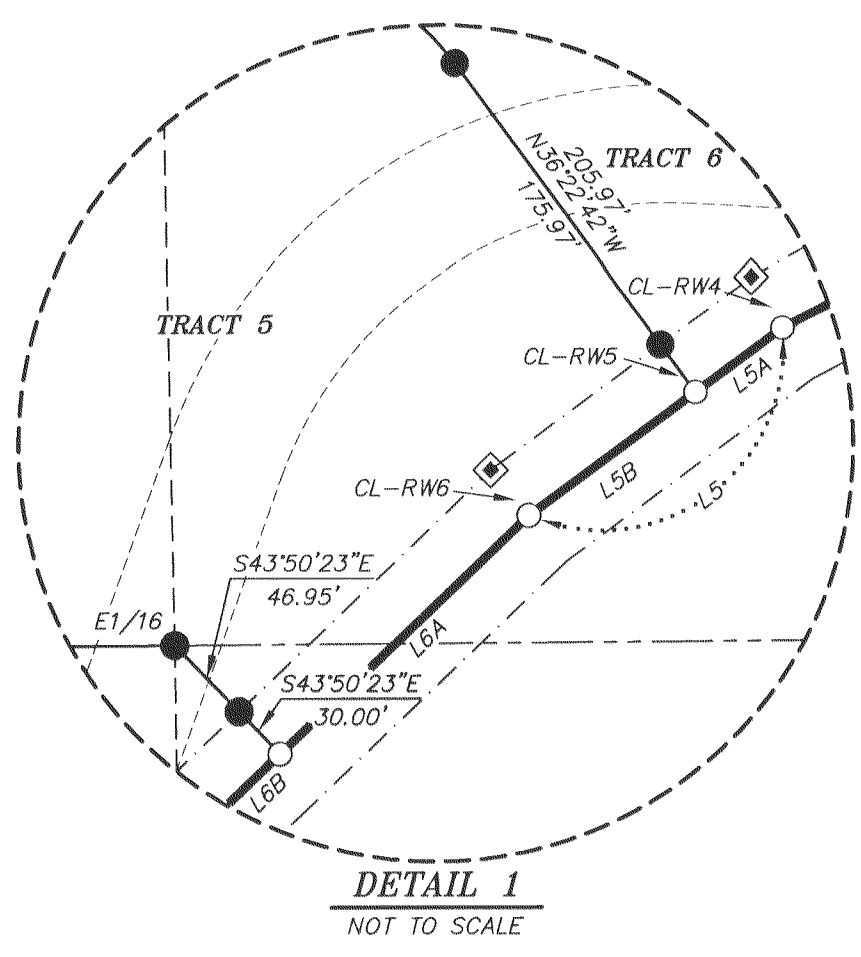
TRACT 6
±35.02 ACRES

TRACT 3
±35.68 ACRES

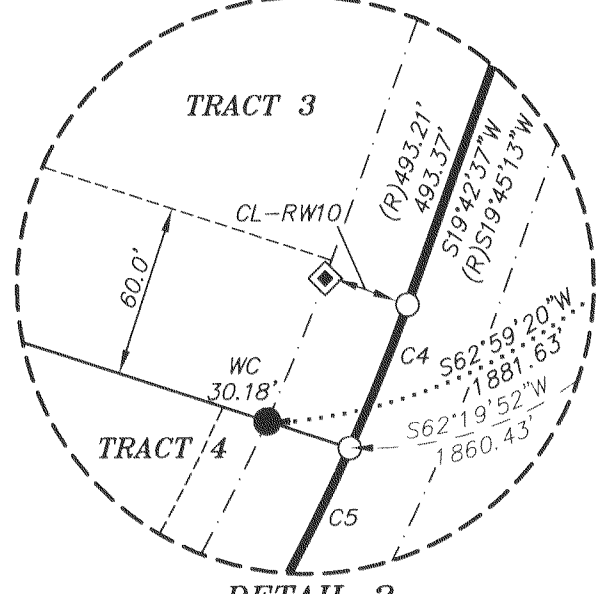
TRACT 1
±39.25 ACRES

TRACT 4
±44.08 ACRES

TRACT 2
±41.82 ACRES



DETAIL 1
NOT TO SCALE



DETAIL 2
NOT TO SCALE

CENTERLINE TO RIGHT-OF-WAY LINE TABLE

LINE	BEARING	LENGTH
CL-RW1	N01°17'18"W	30.00'
CL-RW2	N00°48'07"W	30.00'
CL-RW3	N15°56'52"W	30.58'
CL-RW4	N31°45'12"W	30.10'
CL-RW5	N36°22'42"W	30.00'
CL-RW6	N40°06'33"W	30.06'
CL-RW7	N49°18'03"W	30.14'
CL-RW8	N60°03'52"W	30.13'
CL-RW9	N65°12'09"W	30.00'
CL-RW10	N70°16'00"W	30.00'
CL-RW11	N46°16'13"W	30.00'
CL-RW12	N46°16'13"W	30.00'
CL-RW13	N11°45'43"W	30.00'
CL-RW14	N10°45'56"W	30.00'
CL-RW15	N10°15'55"W	30.00'
CL-RW16	N22°10'12"W	30.00'
CL-RW17	N18°02'24"W	30.00'
CL-RW18	N14°11'21"W	30.00'
CL-RW19	N44°51'17"W	30.00'

LINE TABLE

LINE	BEARING	LENGTH
L1	N84°51'28"E	170.67'
L2	S53°57'14"E	35.00'
L3	S85°11'57"W	146.16'
L4	S62°52'18"W	137.09'
L5	S53°37'19"W	160.18'
L6	S46°09'37"W	175.38'
L7	S33°14'18"W	116.84'
L8	S24°42'51"W	150.17'
L9	S65°56'43"E	160.40'
L10	S33°31'35"W	84.98'
L11	S65°49'25"W	84.63'
L12	N45°08'43"E	109.01'
L13	N87°39'43"E	406.56'

LINE TABLE

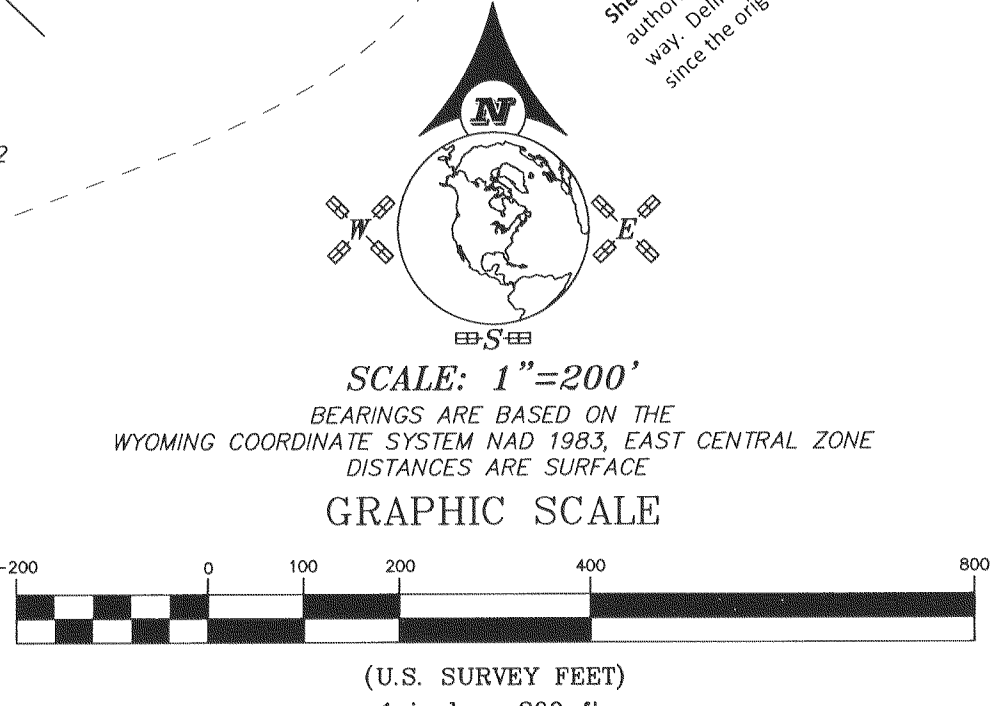
LINE	BEARING	LENGTH
E1	S75°48'39"W	355.00'
E2	N14°11'21"W	7.00'
E3	S75°48'39"W	136.44'
E4	S44°54'51"E	3.00'
E5	S45°08'43"E	537.23'

CURVE TABLE

CURVE	DELTA	RADIUS	ARC LENGTH	CHORD BEARING	CHORD LENGTH
C1	49°07'22"	220.00'	188.62'	N60°17'44"E	182.89'
C2	41°11'20"	220.00'	158.15'	S74°32'54"E	154.77'
C3	18°00'44"	580.00'	162.34'	N62°27'36"W	181.59'
C4	04°29'52"	716.04'	56.21'	S21°58'01"W	56.19'
C5	19°30'34"	716.04'	243.81'	S33°58'14"W	242.64'
C6	32°12'50"	400.00'	225.48'	S49°40'30"W	222.50'

EASEMENT CURVE TABLE

CURVE	DELTA	RADIUS	ARC LENGTH	CHORD BEARING	CHORD LENGTH
EC1	30°39'41"	761.28'	407.39'	S60°22'51"W	402.55'



SCALE: 1" = 200'
BEARINGS ARE BASED ON THE WYOMING COORDINATE SYSTEM NAD 1983, EAST CENTRAL ZONE DISTANCES ARE SURFACE

DATUM:
NAD 83(1983), NAVD 88 (U.S. SURVEY FEET)
DATUM ADJUSTMENT FACTOR (DAF): 1.000235
DIVIDE SURFACE COORDINATES BY DAF TO CALCULATE THE WYOMING COORDINATE SYSTEM NAD 1983, EAST CENTRAL ZONE, COORDINATES

- NOTES:
- BOUNDARY PER BOOK 468, PAGE 468, RECORDED OCTOBER 20, 2005; DESCRIBED THE SOUTH LINE OF SAID TRACT TO BE THE CENTERLINE OF THE COUNTY ROAD KNOWN AS SOLDIER CREEK ROAD.
 - WITNESS CORNERS ESTABLISHED BY PLS 5008 AFTER 2007 DEFINING THE CENTERLINE OF SOLDIER CREEK ROAD (AKA COUNTY ROAD NO. 74) WERE NOT ACCEPTED IN THIS SURVEY.
 - THE NORTHEAST CORNER OF BOOK 468, PAGE 468 IS A 5" BRASS CAP ON A 4" IRON PIPE (MILITARY MONUMENT) AND WAS NOT DESCRIBED AS THE NE CORNER OF THE SE1/4SE1/4, SECTION 14.
 - 4" IRON PIPE (MILITARY MONUMENT) BENT AND DISTURBED WAS REESTABLISHED WITH A 3-1/4" ALUMINUM CAP PER PLS 6812. THE MONUMENT WAS NOT DESCRIBED AS THE NW CORNER OF THE SW1/4SE1/4, SECTION 14.
 - "NO PROPOSED CENTRAL WATER SUPPLY SYSTEM"

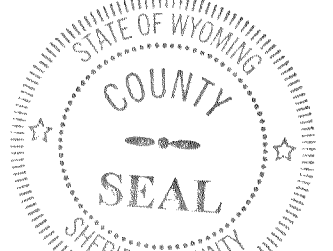
- LEGEND:
- FOUND 1-1/2" OR 2" ALUMINUM CAP PER PE&LS 3159
 - FOUND 2-1/2" ALUMINUM CAP PER PLS 6594
 - FOUND 1" PLASTIC CAP PER PLS 5008 (SEE NOTE: 2)
 - FOUND 5" BRASS CAP ON 4" IRON PIPE (MILITARY MONUMENT)
 - FOUND 4" IRON PIPE (MILITARY MONUMENT) BENT OR DISTURBED
 - SET 3-1/4" ALUMINUM CAP PER PLS 6812
 - SET 2" ALUMINUM CAP PER PLS 6812
 - CALCULATED; NOTHING FOUND/NOTHING SET
 - (R) RECORD
 - (M) MEASURED
 - (C) CALCULATED
 - WC WITNESS CORNER
 - NA NOT ACCEPTED
 - BOUNDARY LINE
 - TRACT/PROPERTY LINE
 - SECTION LINE
 - INTERIOR SECTION LINE
 - COUNTY ROAD RIGHT-OF-WAY LINE
 - CENTERLINE OF EASEMENT
 - EASEMENT LINE AS NOTED

SURVEYOR'S CERTIFICATE

STATE OF WYOMING)
COUNTY OF SHERIDAN)
I, THOMAS D. TUCKER, A DULY REGISTERED LAND SURVEYOR IN THE STATE OF WYOMING, DO HEREBY STATE THAT THIS PLAT REPRESENTS THE RESULTS OF A SURVEY MADE BY ME OR UNDER MY DIRECT SUPERVISION.

Professional Land Surveyor
THOMAS D. TUCKER
6812
Date: SEP 7, 2012
WYOMING

"PLAT IS VALID ONLY IF PRINT HAS ORIGINAL SIGNATURE OF SURVEYOR SIGNED AND DATED"



CERTIFICATE OF RECORDER

STATE OF WYOMING)
COUNTY OF SHERIDAN)
THIS PLAT WAS FILED FOR RECORD IN THE OFFICE OF THE CLERK AND RECORDER AT 4:11 O'CLOCK P.M., THIS 7, DAY OF September, 2012, AND IS DULY RECORDED IN DRAWER A, PLAT NO. 452
FEE \$ 25.00

Eda Schunk Thompson
COUNTY CLERK

STAMP RECEIVING NUMBER 2012-099111

RECORD OF SURVEY
GRIFFITH
LARGE ACREAGE TRACTS

LOCATION: S1/2SE1/4 OF SECTION 14, N1/2NE1/4, SW1/4NE1/4, AND THE NW1/4 OF SECTION 23, TOWNSHIP 56 NORTH, RANGE 85 WEST, 6TH P.M., SHERIDAN COUNTY, WYOMING.

RESTFELDT SURVEYING
2340 WETLANDS DR., SUITE 100
PO BOX 3082
SHERIDAN, WY 82801
307-872-2415
FAX 874-5000

CLIENT: K.O.R. LLC
ATTN: NATHAN MULLINAX
1320 STONEGATE DRIVE
SHERIDAN, WY 82801

JN: 2008-106 SJ: 15
DF: 2006106RS
PF: 12066106-2012
SEPTEMBER 6, 2012

#452