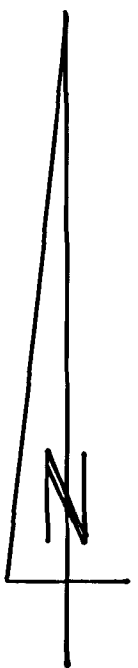


LOCATION MAP
SCALE 1"=2000'



1"=15'

SURVEYOR'S CERTIFICATE

I, ELMER KUBALL, A DULY REGISTERED LAND SURVEYOR IN THE STATE OF WYOMING, DO HEREBY CERTIFY THAT THIS MAP TRULY AND CORRECTLY REPRESENTS THE RESULTS OF A SURVEY MADE BY ME OR UNDER MY DIRECT SUPERVISION.

Elmer Kuball
ELMER KUBALL

WYOMING R.E. & L.S. NO. 2614

PLANNING COMMISSION APPROVAL

APPROVED BY THE SHERIDAN COUNTY PLANNING COMMISSION THIS 23rd DAY OF Oct., 1979.

ATTEST:

Joan Woolston
SECRETARY

Richard P. Brady
VICE CHAIRMAN OF THE SHER. CO. PLAN. COMM.

COUNTY COMMISSIONER'S APPROVAL

APPROVED BY THE SHERIDAN COUNTY BOARD OF COUNTY COMMISSIONERS THIS 23rd DAY OF Oct., 1979.

ATTEST:

Caryle Rudolph
CLERK OF THE BOARD

W.B. Fitch
Acting CHAIRMAN OF THE BOARD

EASEMENTS

EASEMENTS OF 15 FEET ON EACH SIDE OF THE PROPERTY LINES ARE HEREBY RESERVED FOR POLES, WIRES, PIPES AND CONDUITS FOR HEATING, LIGHTING, ELECTRICITY, GAS, TELEPHONE, SEWER, WATER OR OTHER PUBLIC UTILITY PURPOSES OR QUASI-PUBLIC UTILITY SERVICE PURPOSES TOGETHER WITH THE RIGHT OF ENTRY AT ANYTIME FOR REPAIR.

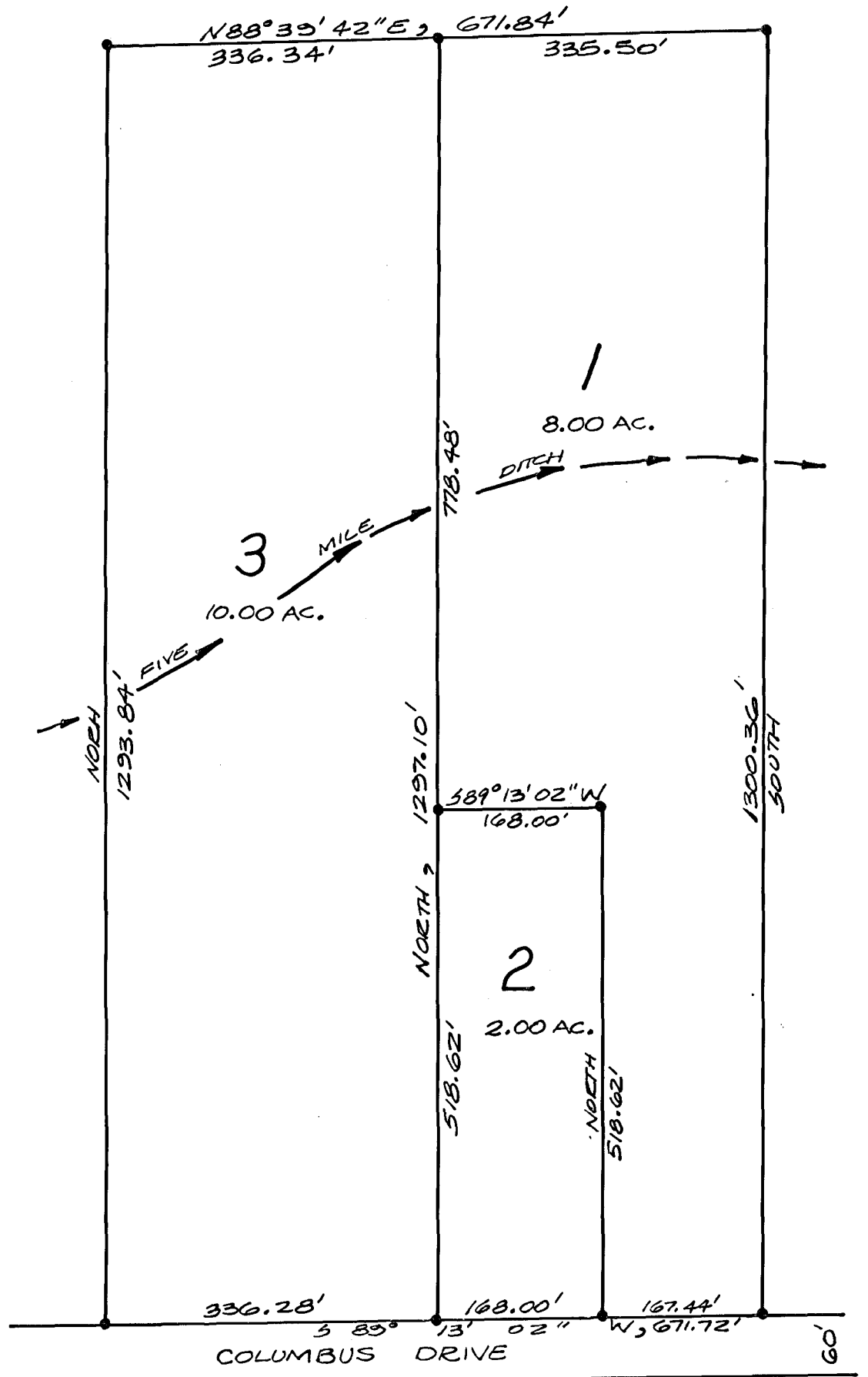
DESCRIPTION

A TRACT OF LAND LOCATED IN THE 3 1/2 SW 1/4 OF SECTION 11, T 57 N, R 87 W, SHERIDAN COUNTY WYOMING, DESCRIBED AS FOLLOWS:

TRACT 5, COLUMBUS SUBDIVISION.

NOTES

1. NO PROPOSED PUBLIC SEWAGE DISPOSAL SYSTEM. WASTE WATER FACILITIES SHALL COMPLY WITH STATE AND COUNTY REQUIREMENTS. OBTAIN PERMIT FROM THE OFFICE OF THE COUNTY ENGINEER.
2. NO PROPOSED DOMESTIC WATER SOURCE.
3. NO PUBLIC MAINTENANCE OF STREETS OR ROADS.
4. APPROACHES TO COUNTY ROADS SHALL BE PROVIDED WITH ADEQUATE DRAINAGE. OBTAIN PERMIT FROM ROAD FOREMAN OR COUNTY ENGINEER.
5. LOT CORNERS ARE MARKED WITH #5 REBARS.
6. SOIL DATA AVAILABLE IN OFFICE OF THE COUNTY ENGINEER.
7. SUBJECT TO EASEMENT RECORDED BOOK 223, PAGE 231.



CERTIFICATE OF DEDICATION

THE ABOVE OR FOREGOING SUBDIVISION OF LANDS LOCATED IN SECTION 11, T 57 N, R 87 W, AS APPEARS ON THIS PLAT, IS WITH THE FREE CONSENT, AND IN ACCORDANCE WITH THE DESIRES OF THE UNDERSIGNED OWNERS AND PROPRIETORS, CONTAINING 20.00 ACRES MORE OR LESS, HEREBY RELEASING AND WAIVING HOMESTEAD RIGHTS.

WITNESS OUR HANDS AND SEALS THIS 19TH DAY OF OCTOBER, 1979.

V.C. Knight } By Walter J. Pilch
Velma J. Knight } Power of Attorney
Walter J. Pilch } William J. Eisele
Olga M. Pilch } Shirley A. Eisele
STATE OF WYOMING) SS
COUNTY OF SHERIDAN)

THE FOREGOING INSTRUMENT WAS ACKNOWLEDGED BEFORE ME BY: WALTER J. PILCH, POWER OF ATTORNEY FOR V.C. KNIGHT AND VELMA J. KNIGHT; WALTER J. PILCH, OLGA M. PILCH; WILLIAM J. EISELE; SHIRLEY A. EISELE. THIS 19TH DAY OF OCTOBER, 1979. WITNESS MY HAND AND OFFICIAL SEAL.

MY COMMISSION EXPIRES

Mildred K. Johnson
January 2, 1983 PUBLIC

CERTIFICATION OF RECORDER

STATE OF WYOMING) SS
COUNTY OF SHERIDAN)

I HEREBY CERTIFY THAT THIS PLAT WAS FILED FOR RECORD IN MY OFFICE AT 9:00 AM O'CLOCK THIS 26th DAY OF OCTOBER, 1979, AND RECORDED IN PLAT BOOK NO. 1 ON PAGE 282.

NO. 777302

FEE 50.75

Margaret Lewis

COUNTY CLERK

Caryle Rudolph
DEPUTY

PLAT

DANIELS SUBDIVISION

BEING A SUBDIVISION OF TRACT 5,
COLUMBUS SUBDIVISION
SHERIDAN COUNTY, WYOMING
PILCH ENGINEERING AND SURVEYING, INC.

SEPTEMBER 1979

EK