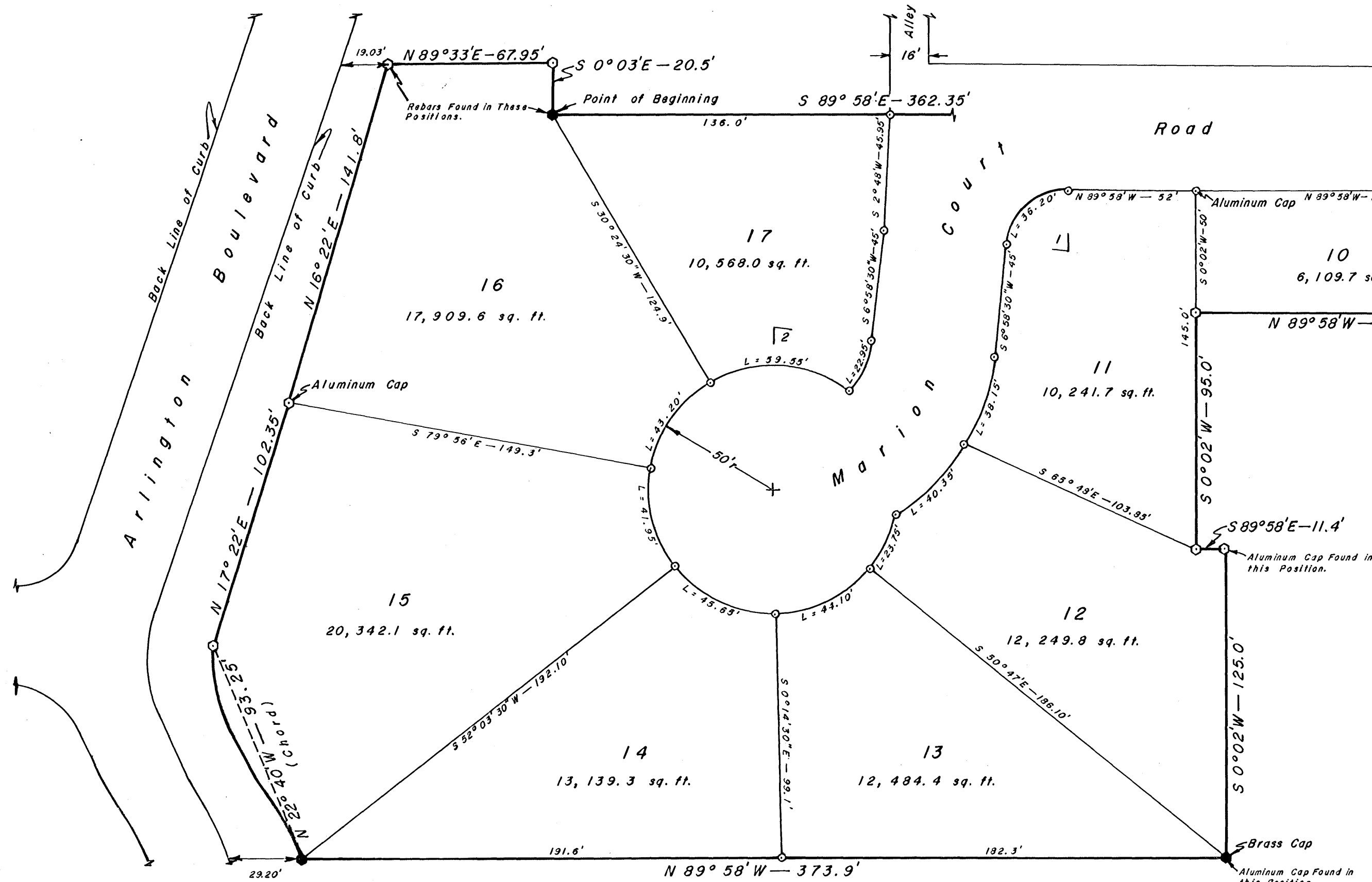


DETAIL

SCALE: 1" = 40'

LOCATION

SCALE: 1" = 200'



CURVE DATA

1	Radius	50'
	Delta	83°
	Tangent	44.24'
	Length	72.43'
2	Radius	65'
	Delta	83°
	Tangent	57.51'
	Length	94.16'

CERTIFICATE of SURVEYOR

State of Wyoming } ss
County of Sheridan

I, Carl R. Oslund, of Sheridan, Wyoming, hereby certify that this amended plat was made from field notes of actual surveys made by me in the Fall of 1976 and in February and March of 1977 and correctly represents all the data shown thereon.

Bearings have been established from measured horizontal angles and distances have been chained and corrected to true horizontal.

All tract corners and angle points have been monumented with brass caps or aluminum caps.

Registration No. 102 LS

Carl R. Oslund
Surveyor

By Carl R. Oslund

Subscribed in my presence and sworn to before me this 19th day of April, 1977.

My commission expires 1/13/79

Barbara J. Sore
Notary Public

CERTIFICATE of RECORDER

State of Wyoming } ss
County of Sheridan

I hereby certify that this plat was filed for record in my office at 2:45 PM o'clock this 3rd day of May, 1977 and recorded in Plat Book Number 1 on page 168.

No. 708440
Fee \$ 25.00

Margaret Lewis
County Clerk
Deputy

Approval by the City:

The Sheridan Planning and Zoning Commission herewith recommends the approval of the foregoing plat this 15 day of April, 1977.

Lawrence M. Ward
Chairman

Conny Quarterman
Secretary

The foregoing plat is hereby approved for filing by the undersigned Mayor and City Clerk in and for the City of Sheridan, Wyoming, on this 14th day of February, 1977.

M. Lew Marshall
Mayor

Arthur W. Elkins
City Clerk

CERTIFICATE of DEDICATION

The undersigned, Lawrence S. Schreder and Roy M. and Joanne L. Sharp, all of Sheridan, Wyoming, hereby certify that they are the sole owners of a tract of land situated in part of Lots 8 and 9 of the Rhodes Farm Addition, City of Sheridan, and acreage in part of the NE⁴ NW⁴ of Section 27, T 56 N R 84 W, whose point of beginning is the existing and monumented position for the Northwest Corner of Lot 9, Rhodes Farm Addition, City of Sheridan; thence S 89° 58' E, a distance of 362.35' to the westerly right-of-way of Marion Street; thence along the westerly right-of-way line of Marion Street for a distance of 85.15' with bearing of S 20° E; thence N 89° 58' W a distance of 131.35' to an angle point; thence S 0° 02' W 95' to an angle point; thence S 89° 58' E-11.4' to an angle point; thence S 0° 02' W-125' to the South line of Lot 8, Rhodes Farm Addition, City of Sheridan; thence N 89° 58' W along the South line of Lot 8 for a distance of 373.9' to the easterly right-of-way of Arlington Boulevard; thence N 22° 40' W-93.25'; N 17° 22' E-102.35'; N 16° 22' E-141.8' along the easterly right-of-way line of Arlington Boulevard; thence N 89° 33' E for a distance of 67.95'; thence S 0° 03' E for 20.5' to the point of beginning; said tract containing 2.836 acres.

The above mentioned owners also certify that the replatting of this tract of land, plus that part of the alley between the Rhodes Farm Addition and O'Connor Subdivision, City of Sheridan, as described and shown on this amended plat, is with the free consent, and in accordance with the desires of the undersigned owners and proprietors: who do hereby dedicate and convey to and for public use forever hereafter the Marion Court Road as laid out and designated on this plat, and to also reserve perpetual easements for the installation and maintenance of utilities as are laid out and designated on this plat.

The owners hereby release and waive all rights under and by virtue of Homestead Exemption Laws of the State of Wyoming.

Lawrence S. Schreder
Lawrence S. Schreder

Roy M. Sharp
Roy M. Sharp

Joanne L. Sharp
Joanne L. Sharp

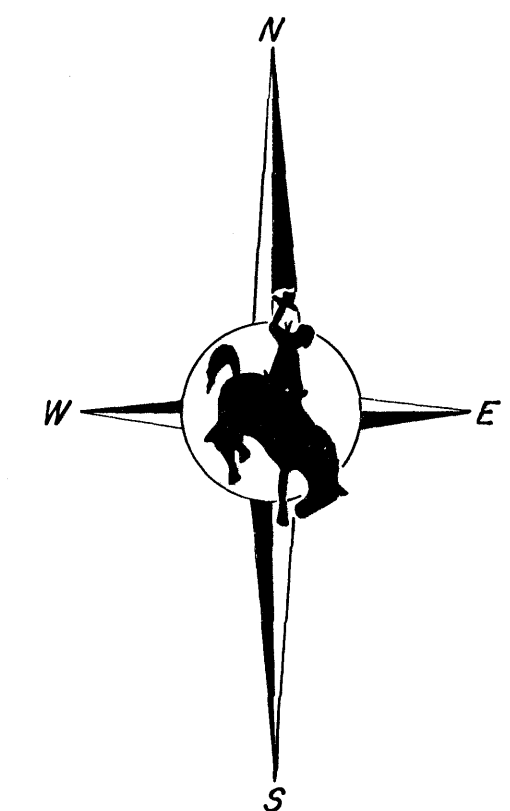
State of Wyoming } ss
County of Sheridan

The foregoing instrument was acknowledged before me this 5th day of April, 1977, by Lawrence S. Schreder and Roy M. and Joanne L. Sharp.

Witness my hand and official seal.

My commission expires January 20, 1981.

Notary Public



AMENDED PLAT

of

PART of LOTS 8 and 9, RHODES FARM ADDITION

and

ACREAGE in PART of the NE⁴ NW⁴ of SECTION 27, T 56 N R 84 W
(SHOWN on SHERIDAN LAND CO'S. 1st ADDITION MAP as RESERVED)

CITY of SHERIDAN

for

LAWRENCE S. SCHREDER

P.O. BOX 6328

SHERIDAN, WYOMING