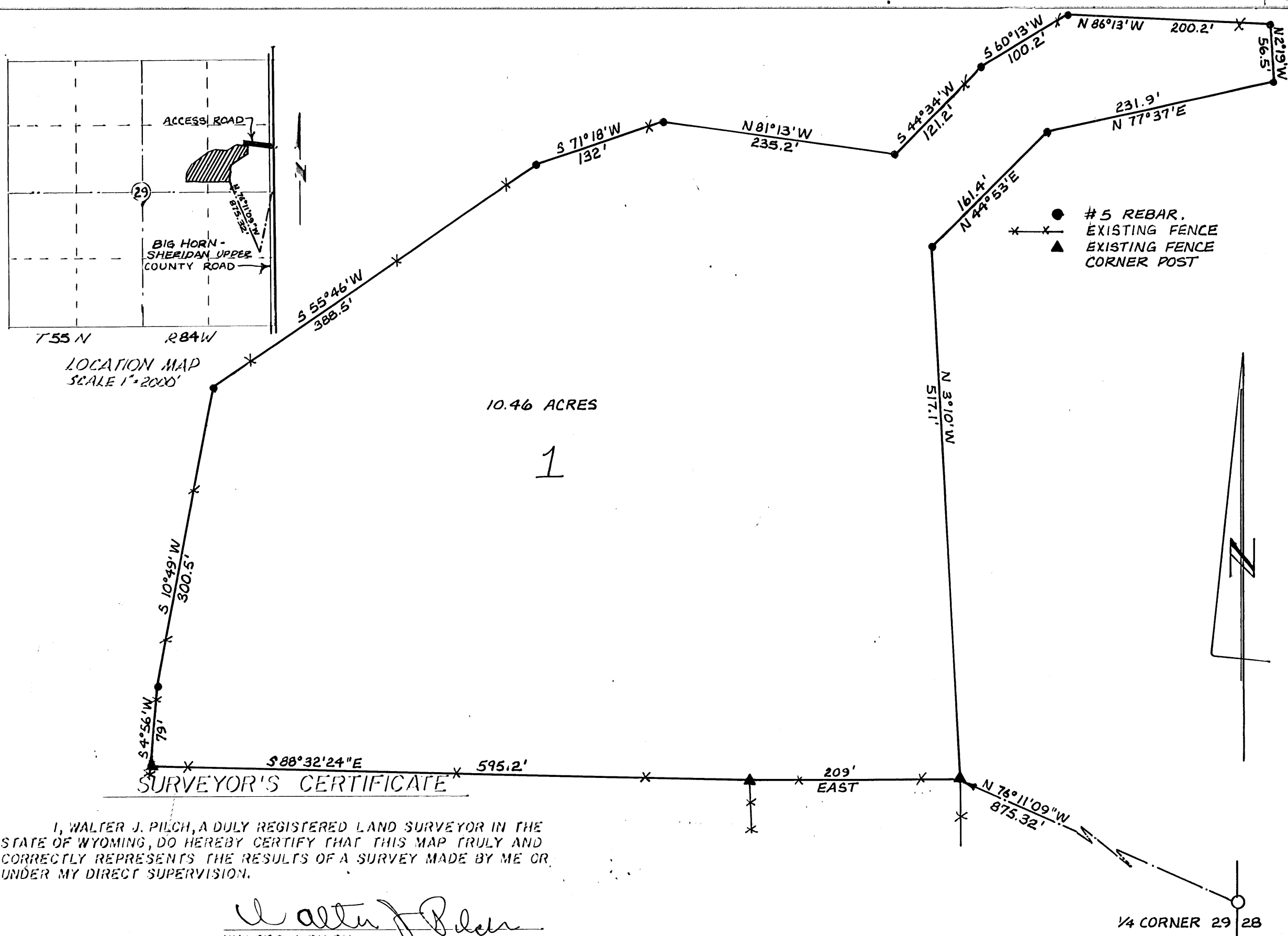


0-47



I, WALTER J. PILCH, A DULY REGISTERED LAND SURVEYOR IN THE STATE OF WYOMING, DO HEREBY CERTIFY THAT THIS MAP TRULY AND CORRECTLY REPRESENTS THE RESULTS OF A SURVEY MADE BY ME OR UNDER MY DIRECT SUPERVISION.

Walter J. Pilch
WALTER J. PILCH
WYOMING P.E. & L.S. NO. 537

PLANNING COMMISSION APPROVAL

APPROVED BY THE SHERIDAN COUNTY PLANNING COMMISSION THIS 20TH DAY OF SEPTEMBER, 1977.

ATTEST: *Daryl R. Daly*
CHAIRMAN OF THE SHER. CO. PLAN. COMM.

Milton Myland
SECRETARY

COUNTY COMMISSIONER'S APPROVAL

APPROVED BY THE SHERIDAN COUNTY BOARD OF COUNTY COMMISSIONERS THIS 20TH DAY OF SEPTEMBER, 1977.

ATTEST: *William J. Laya*
CHAIRMAN OF THE BOARD

Margaret Lewis
CLERK OF THE BOARD

EASEMENTS

EASEMENTS OF 10 FEET ON EACH SIDE OF THE PROPERTY LINES ARE HEREBY RESERVED FOR POLES, WIRES, PIPES AND CONDUITS FOR HEATING, LIGHTING, ELECTRICITY, GAS, TELEPHONE, SEWER, WATER, OR OTHER PUBLIC, CABLE TELEVISION, OR QUASI PUBLIC UTILITY SERVICE PURPOSES, TOGETHER WITH THE RIGHT OF ENTRY AT ANY TIME FOR THE PURPOSE OF FURTHER CONSTRUCTION AND REPAIR.

DESCRIPTION

A TRACT OF LAND LOCATED IN THE S 1/2 NE 1/4 OF SECTION 29, T 55 N, R 84 W, SHERIDAN COUNTY WYOMING, DESCRIBED AS FOLLOWS:

BEGINNING AT A POINT LOCATED N 76°11'09\"W, 875.32 FEET FROM THE E 1/4 CORNER OF SAID SECTION 29; THENCE N 3°10'W, 517.1 FEET TO A POINT; THENCE N 44°53'E, 161.4 FEET TO A POINT; THENCE N 77°37'E, 231.9 FEET TO A POINT; THENCE N 2°19'W, 56.5 FEET TO A POINT; THENCE N 86°13'W, 200.2 FEET TO A POINT; THENCE S 60°13'W, 100.2 FEET TO A POINT; THENCE S 44°34'W, 121.2 FEET TO A POINT; THENCE N 81°13'W, 235.2 FEET TO A POINT; THENCE S 71°18'W, 132 FEET TO A POINT; THENCE S 55°46'W, 388.5 FEET TO A POINT; THENCE S 10°49'W, 300.5 FEET TO A POINT; THENCE S 4°56'W, 79 FEET TO A POINT; THENCE S 88°32'24\"E, 595.2 FEET TO A POINT; THENCE EAST, 209 FEET TO THE POINT OF BEGINNING.

CERTIFICATE OF DEDICATION

THE ABOVE OR FOREGOING SUBDIVISION OF LANDS LOCATED IN SECTION 29, T 55 N, R 84 W, AS APPEARS ON THIS PLAT, IS WITH THE FREE CONSENT, AND IN ACCORDANCE WITH THE DESIRES OF THE UNDERSIGNED OWNERS AND PROPRIETORS, CONTAINING 10.46 ACRES MORE OR LESS. RELEASING AND WAIVING HOMESTEAD EXEMPTION RIGHTS.

WITNESS OUR HANDS AND SEALS THIS 4th DAY OF April, 1978.

Robert K. Schrater
Lila E. Schrater

STATE OF WYOMING) SS
COUNTY OF SHERIDAN)

BY: THE FOREGOING INSTRUMENT WAS ACKNOWLEDGED BEFORE ME THIS 4th DAY OF April, 1978. WITNESS MY HAND AND OFFICIAL SEAL.

MY COMMISSION EXPIRES *Mildred K. Johnson*
January 2, 1977 NOTARY PUBLIC

CERTIFICATION OF RECORDER

STATE OF WYOMING) SS
COUNTY OF SHERIDAN)

I HEREBY CERTIFY THAT THIS PLAT WAS FILED FOR RECORD IN MY OFFICE AT 2:30 O'CLOCK THIS 13 DAY OF MAY, 1978 AND RECORDED IN PLAT BOOK NO. 1 ON PAGE 210.

W 237037
FEE: 25.00

Margaret Lewis
COUNTY CLERK

DEPUTY

SCHRATER 1ST SUBDIVISION

BEING A SUBDIVISION IN THE
S 1/2 NE 1/4 OF SECTION 29 T 55 N, R 84 W
SHERIDAN COUNTY, WYOMING
SCALE 1\"=100'
WALTER J. PILCH & ASSOCIATES 7-26-77

Partial Vacation 4-5-04 BK 452 Pg 158