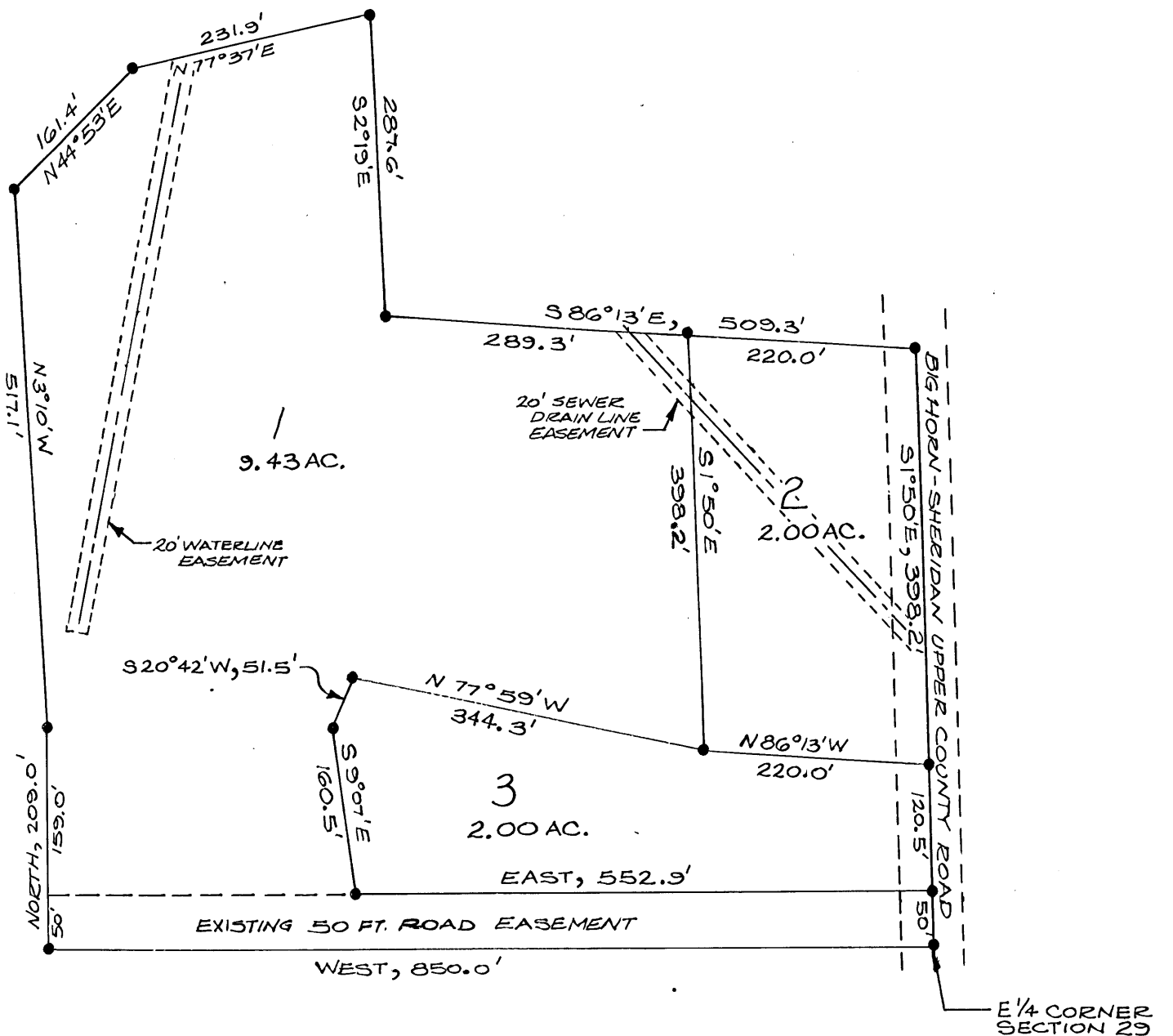


LOCATION MAP
SCALE 1"=2000'

1"=150'

LOT CORNERS ARE
MARKED WITH 5/8"
DIAMETER STEEL
RODS.



SURVEYOR'S CERTIFICATE

I, WALTER J. PILCH, A DULY REGISTERED LAND SURVEYOR IN THE STATE OF WYOMING, DO HEREBY CERTIFY THAT THIS MAP TRULY AND CORRECTLY REPRESENTS THE RESULTS OF A SURVEY MADE BY ME OR UNDER MY DIRECT SUPERVISION.

Walter J. Pilch
WALTER J. PILCH
WYOMING RE. & L.S. NO. 537

EASEMENTS

Easements of 15 feet on each side of the property lines are hereby reserved for poles, wires, pipes and conduits for heating, lighting, electricity, gas, telephone, sewer, water or other public, cable television, or quasi public utility service purposes, together with the right of entry at anytime for the purpose of further construction and repair.

PLANNING COMMISSION APPROVAL

APPROVED BY THE SHERIDAN COUNTY PLANNING COMMISSION
THIS 5th DAY OF October, 1978.

ATTEST:

Richard E. J. J. J.
CHAIRMAN OF THE SHER. CO. PLAN. COMM.

Orlitt Mylland
SECRETARY

COUNTY COMMISSIONER'S APPROVAL

APPROVED BY THE SHERIDAN COUNTY BOARD OF COUNTY COMMISSIONERS THIS 5th DAY OF October, 1978.

ATTEST:

William J. Loya
CHAIRMAN OF THE BOARD

Margaret Lewis
CLERK OF THE BOARD

APPROACHES

All approaches to the County Road shall be provided with adequate drainage culverts. Culverts shall be a minimum of 18" in diameter and 20 feet in length. Approaches shall be approved by the County Road Department.

DESCRIPTION

A TRACT OF LAND LOCATED IN THE SE 1/4 NE 1/4 OF SECTION 29, T 55 N, R 84 W, SHERIDAN COUNTY WYOMING, DESCRIBED AS FOLLOWS:

Beginning at the E 1/4 corner of said Section 29; thence west, 850.0 feet to a point; thence north, 209.0 feet to a point; thence N 31° 10' W, 517.1 feet to a point; thence N 44° 53' E, 161.4 feet to a point; thence N 77° 37' E, 231.9 feet to a point; thence S 2° 19' E, 287.6 feet to a point; thence S 86° 13' E, 509.3 feet to a point; thence S 1° 50' E, 568.7 feet to the point of beginning.

CERTIFICATE OF DEDICATION

THE ABOVE OR FOREGOING SUBDIVISION OF LANDS LOCATED IN SECTION 29, T 55 N, R 84 W, AS APPEARS ON THIS PLAT, IS WITH THE FREE CONSENT, AND IN ACCORDANCE WITH THE DESIRES OF THE UNDERSIGNED OWNERS AND PROPRIETORS, CONTAINING 13.43 ACRES MORE OR LESS. HEREBY RELEASING AND WAIVING HOME-STEAD EXEMPTION RIGHTS.
WITNESS OUR HANDS AND SEALS THIS 25 DAY OF MAY, 1978.

Talbert K. Schrater
Lila E. Schrater

STATE OF WYOMING) SS
COUNTY OF SHERIDAN)

THE FOREGOING INSTRUMENT WAS ACKNOWLEDGED BEFORE ME BY: TALBERT K. SCHRATER AND LILA E. SCHRATER
THIS 25 DAY OF MAY, 1978. WITNESS MY HAND AND OFFICIAL SEAL.

Olga M. Pilch
MY COMMISSION EXPIRES 1-15, 1980. NOTARY PUBLIC

CERTIFICATION OF RECORDER

STATE OF WYOMING) SS
COUNTY OF SHERIDAN)

I HEREBY CERTIFY THAT THIS PLAT WAS FILED FOR RECORD IN MY OFFICE AT 10:00 AM, THIS 13 DAY OF OCTOBER, 1978 AND RECORDED IN PLAT BOOK NO. 1 ON PAGE 23.

NO 748885

FEE: 50.00

Margaret Lewis
COUNTY CLERK

DEPUTY

SCHRATER 2ND
SUBDIVISION
SHERIDAN COUNTY, WYOMING
MAY 1978

PILCH ENGINEERING AND SURVEYING

Partial Vacation 4-5-04 BK 452 Pg 158