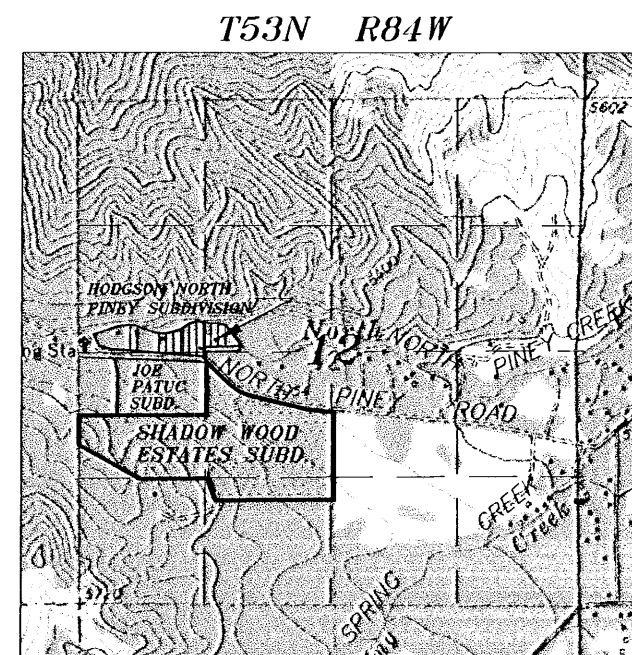


LINE TABLE		
LINE	BEARING	LENGTH
L1	S44°46'03"E	9.92'
L2	S75°19'49"E	35.55'
L3	S43°04'56"W	14.87'
L4	N43°04'56"E	15.72'
L5	S37°02'12"E	30.95'
L6	N69°31'01"W	17.24'
L7	S20°28'50"W	14.51'
L8	S20°28'50"W	14.96'
L9	N0°36'20"W	17.75'
L10	S38°19'18"W	20.92'
L11	S38°19'18"W	20.92'
L12	N80°19'02"W	23.86'
L13	S30°17'08"W	35.11'
L14	S30°17'08"W	35.11'

CURVE TABLE					
CURVE	RADIUS	DELTA	LENGTH	CHORD BEARING	CHORD LENGTH
C-1	105.00'	80°07'08"	148.83'	S01°01'22"W	135.15'
C-2	290.00'	14°39'30"	74.19'	S44°21'52"E	73.99'
C-3	290.00'	17°49'28"	90.22'	S60°38'28"E	89.85'
C-4	185.00'	2°39'21"	75.31'	S81°10'50"E	74.09'
C-5	105.00'	8°03'30"	159.54'	N43°37'44"W	144.63'
C-6	162.83'	8°03'30"	247.42'	S43°37'44"W	224.29'
C-7	245.00'	2°13'21"	99.75'	N81°10'50"W	99.04'
C-8	105.00'	20°44'04"	38.00'	S10°08'48"W	37.79'
C-9	185.00'	20°44'04"	59.71'	N10°08'48"E	58.99'
C-10	350.00'	18°53'04"	113.32'	S60°14'58"W	112.80'
C-11	185.00'	47°44'32"	137.49'	S62°10'14"W	133.94'
C-12	245.00'	06°55'28"	29.61'	S89°30'14"W	29.59'
C-13	245.00'	06°55'28"	29.61'	N89°35'22"W	29.39'
C-14	245.00'	20°28'10"	87.39'	N89°55'57"W	86.99'
C-15	70.00'	30°17'08"	37.00'	S15°18'14"W	36.57'
C-16	185.00'	2°10'34"	74.83'	S11°15'17"E	74.35'
C-17	245.00'	10°58'23"	85.41'	N11°12'24"W	84.97'
C-18	245.00'	03°12'11"	13.70'	N01°36'05"W	13.69'
C-19	130.00'	30°17'08"	68.72'	N15°18'14"E	67.92'
C-20	65.00'	3°04'28"	60.21'	S84°19'34"W	58.08'
C-21	65.00'	91°30'08"	103.81'	N63°12'10"W	93.12'
C-22	65.00'	160°27'03"	182.03'	S77°25'15"E	178.11'
C-23	185.00'	20°28'10"	85.99'	S89°55'57"E	85.64'
C-24	185.00'	1°58'08"	44.57'	S87°33'06"E	44.46'
C-25	105.00'	47°44'32"	87.49'	N62°10'14"E	84.98'
C-26	350.00'	14°39'30"	89.54'	N44°21'52"W	89.30'
C-27	185.00'	80°03'08"	230.73'	N03°10'32"E	212.98'
C-28	185.00'	26°36'17"	85.90'	S58°04'12"E	85.13'
C-29	415.00'	07°00'15"	50.73'	S48°16'10"E	50.70'
C-30	415.00'	23°33'30"	170.64'	S63°33'03"E	169.44'
C-31	415.00'	08°28'19"	61.12'	S79°35'57"E	61.07'

## SHADOW WOODS ESTATES SUBDIVISION

SITUATED IN THE N1/2SW1/4, SE1/4SW1/4 OF SECTION 12,  
T53N, R84W, 6TH P.M., SHERIDAN COUNTY, WYOMING  
16 LOTS CONTAINING ±48.92 ACRES

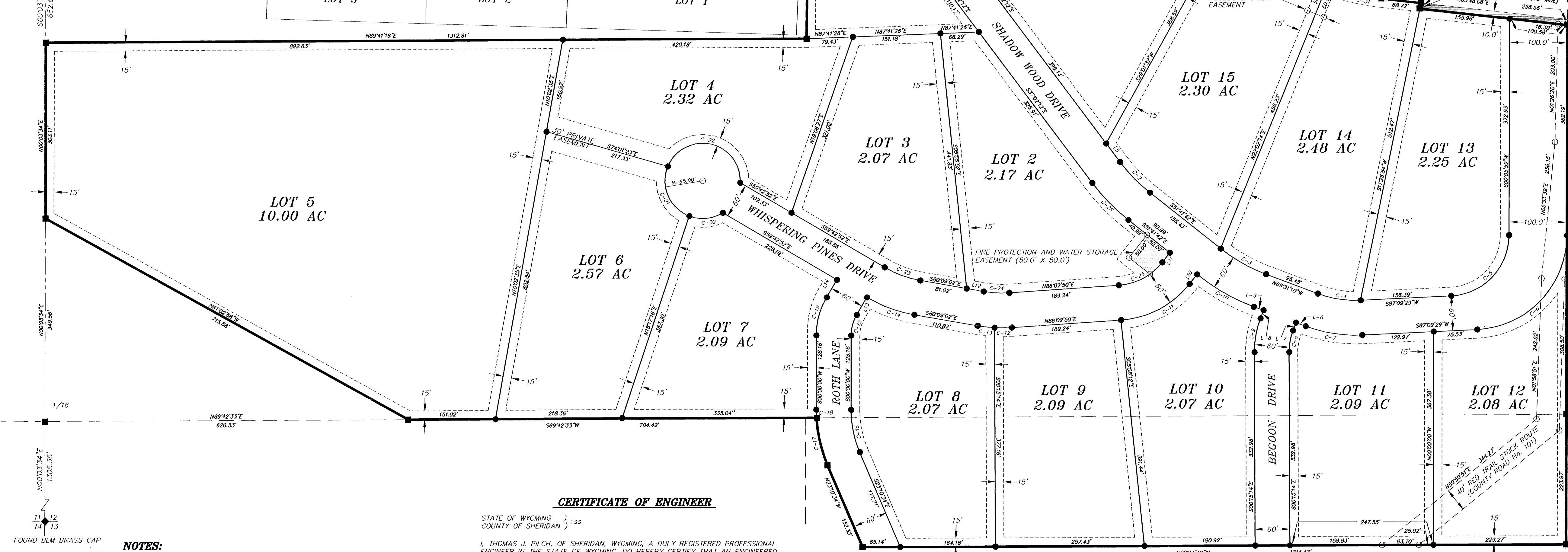


### LEGEND

- SET 1 1/2" ALUMINUM CAP PER LS 2615
- ◆ SET 3 1/4" ALUMINUM CAP PER LS 2615
- ◆ FOUND CORNER AS DESCRIBED
- NOT FOUND/SET
- SECTION LINE
- INTERIOR SECTION LINE
- EXTERIOR BOUNDARY OF SHADOW WOOD ESTATES SUBDIVISION
- LOT LINE OF SHADOW WOOD ESTATES SUBDIVISION
- ADJOINER PROPERTY/LOT LINE
- RIGHT OF WAY LINE OF RED TRAIL STOCK ROUTE, COUNTY ROAD No. 101 (40' WIDE)
- RIGHT OF WAY LINE OF UTILITY EASEMENT (15' TYPICAL)

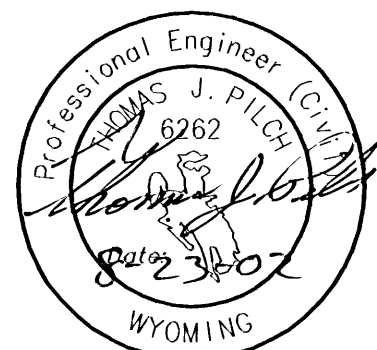
FOUND 3 1/4" ALUMINUM  
CAP PER LS 6594

N=1,814,999.82  
E=1,416,957.98  
(WYOMING STATE PLANE COORDINATES  
NAD 83-EAST CENTRAL ZONE)



### CERTIFICATE OF ENGINEER

STATE OF WYOMING ) ss  
COUNTY OF SHERIDAN )  
I, THOMAS J. PILCH, OF SHERIDAN, WYOMING, A DULY REGISTERED PROFESSIONAL ENGINEER IN THE STATE OF WYOMING, DO HEREBY CERTIFY THAT AN ENGINEERED ON-SITE SEPTIC SYSTEM CAN BE DESIGNED, CONSTRUCTED AND OPERATED TO OFFER AN ADEQUATE AND SAFE SEWAGE DISPOSAL SYSTEM FOR THIS PROPERTY.

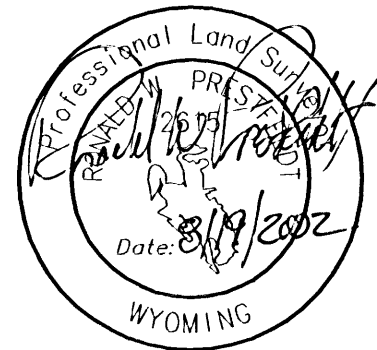


"CERTIFICATE IS VALID ONLY IF PRINT HAS ORIGINAL  
SIGNATURE OF ENGINEER SIGNED AND DATED"

### SURVEYOR'S CERTIFICATE

STATE OF WYOMING ) ss  
COUNTY OF SHERIDAN )

I, RONALD W. PRESTFELDT A DULY REGISTERED LAND SURVEYOR IN THE STATE OF WYOMING, DO HEREBY CERTIFY THAT THIS PLAT OF "SHADOW WOODS ESTATES SUBDIVISION" TRULY AND CORRECTLY REPRESENTS THE RESULTS OF A SURVEY MADE BY ME OR UNDER MY DIRECT SUPERVISION.



"SURVEY IS VALID ONLY IF PRINT HAS ORIGINAL  
SEAL AND SIGNATURE OF SURVEYOR SIGNED AND DATED"

### CERTIFICATE OF OWNER

THE ABOVE OR FOREGOING SUBDIVISION, A TRACT OF LAND SITUATED IN THE N1/2SW1/4, SE1/4SW1/4 OF SECTION 12, TOWNSHIP 53 NORTH, RANGE 84 WEST, 6TH P.M., SHERIDAN COUNTY, WYOMING, SAID TRACT BEING MORE PARTICULARLY DESCRIBED AS FOLLOWS:

COMMENCING AT THE WEST QUARTER CORNER OF SAID SECTION 12; THENCE S00°03'34"W, 652.67 FEET ALONG THE WEST LINE OF SAID SECTION 12 TO THE POINT OF BEGINNING; SAID POINT BEING THE NORTHWEST CORNER OF THE S1/2NW1/4SW1/4; THENCE N89°41'16"E, 1312.81 FEET ALONG THE NORTH LINE OF SAID S1/2NW1/4SW1/4 TO A POINT, SAID POINT BEING THE NORTHEAST CORNER OF SAID S1/2NW1/4SW1/4; THENCE N00°32'08"E, 543.65 FEET TO A POINT, SAID POINT LYING ON THE SOUTH RIGHT OF WAY LINE OF NORTH PINEY ROAD, (A.K.A. COUNTY ROAD No. 2); THENCE, THROUGH A CURVE TO THE RIGHT HAVING A CENTRAL ANGLE OF 26°36'17", A RADIUS OF 185.00 FEET, AN ARC LENGTH OF 85.90 FEET, A CHORD BEARING OF S58°04'12"E, AND A CHORD LENGTH OF 85.13 FEET ALONG SAID SOUTH RIGHT OF WAY LINE TO A POINT; THENCE S44°46'03"E, 256.86 FEET ALONG SAID SOUTH RIGHT OF WAY LINE TO A POINT; THENCE, THROUGH A CURVE TO THE LEFT HAVING A CENTRAL ANGLE OF 08°26'19", A RADIUS OF 415.00 FEET, AN ARC LENGTH OF 61.12 FEET, A CHORD BEARING OF S79°32'57"E, AND A CHORD LENGTH OF 61.07 FEET ALONG SAID SOUTH RIGHT OF WAY LINE TO A POINT; THENCE S83°46'06"E, 68.72 FEET ALONG SAID SOUTH RIGHT OF WAY LINE TO A POINT; THENCE S11°25'54"W, 10.04 FEET TO A POINT; THENCE S83°46'06"E, 256.56 FEET TO A POINT, SAID POINT LYING ON THE EAST LINE OF SAID N1/2SW1/4; THENCE S00°05'59"W, 670.69 FEET ALONG SAID EAST LINE TO A POINT, SAID POINT BEING THE SOUTHEAST CORNER OF SAID N1/2SW1/4; THENCE S00°05'59"W, 223.97 FEET ALONG THE EAST LINE OF SAID SE1/4SW1/4 TO A POINT; THENCE S89°44'46"W, 1214.47 FEET TO A POINT; THENCE N23°10'34"W, 152.33 FEET TO A POINT; THENCE, THROUGH A CURVE TO THE RIGHT HAVING A DELTA OF 19°58'23", A RADIUS OF 245.00 FEET, AN ARC LENGTH OF 85.41 FEET, A CHORD BEARING OF N13°11'22"W, AND A CHORD LENGTH OF 84.97 FEET TO A POINT, SAID POINT LYING ON THE SOUTH LINE OF SAID N1/2SW1/4; THENCE S89°42'33"W, 704.42 FEET ALONG THE SOUTH LINE OF SAID N1/2SW1/4 TO A POINT; THENCE N61°02'58"W, 715.58 FEET TO A POINT, SAID POINT LYING OF THE WEST LINE OF SAID N1/2SW1/4; THENCE N00°03'34"E, 303.11 FEET ALONG THE WEST LINE OF SAID N1/2SW1/4 TO THE POINT OF BEGINNING.

AS APPEARS ON THIS PLAT, IS WITH FREE CONSENT, AND IN ACCORDANCE WITH THE DESIRES OF THE UNDERSIGNED OWNERS AND PROPRIETORS, CONTAINING 48.92 ACRES OF LAND, MORE OR LESS, HAVE BY THESE PRESENTS LAID OUT, AND SURVEYED AS THE SHADOW WOODS ESTATES SUBDIVISION; AND DO HEREBY DEDICATE AND CONVEY TO AND FOR THE PUBLIC USE FOREVER HEREAFTER THE STREETS AS ARE LAID OUT AND DESIGNATED ON THIS PLAT, AND DO ALSO RESERVE PERPETUAL EASEMENTS FOR THE INSTALLATION AND MAINTENANCE OF UTILITIES, ACCESS ROADS, AND FOR IRRIGATION AND DRAINAGE FACILITIES AS ARE LAID OUT AND DESIGNATED ON THIS PLAT HEREBY RELEASING AND WAIVING ALL HOMESTEAD RIGHTS.

EXECUTED THIS 20<sup>th</sup> DAY OF December, 2001.

By: *Robert L. Roth*  
ROBERT LOUIS ROTH (MEMBER)  
MAGIC BEAN L.L.C., A WYOMING LIMITED LIABILITY COMPANY

STATE OF WYOMING ) ss  
COUNTY OF SHERIDAN )

THE FOREGOING INSTRUMENT WAS ACKNOWLEDGED BEFORE ME THIS 20<sup>th</sup> DAY OF Dec., 2001, BY ROBERT LOUIS ROTH, MEMBER OF MAGIC BEAN L.L.C. WITNESS MY HAND AND OFFICIAL SEAL.

MY COMMISSION EXPIRES: Feb. 19, 2004

DAVID E. HORNEY, NOTARY PUBLIC  
COUNTY OF SHERIDAN, STATE OF WYOMING  
MY COMMISSION EXPIRES FEB 19, 2004

### CERTIFICATES OF APPROVAL

APPROVED BY THE SHERIDAN COUNTY PLANNING COMMISSION

THIS 30<sup>th</sup> DAY OF October, 2001.

ATTEST:

*Mike Connell*  
CLERK

*Jay O. Stahl*  
CHAIRMAN

PLAT APPROVED AND SUBDIVISION PERMIT ISSUED BY THE BOARD OF COUNTY COMMISSIONERS OF SHERIDAN COUNTY THIS 16<sup>th</sup> DAY OF October, 2001.

ATTEST:

*Robert L. Bessy, Deputy*  
CLERK OF THE BOARD

*B. B. Bessy*  
CHAIRMAN

### CERTIFICATE OF RECORDER

STATE OF WYOMING ) ss  
COUNTY OF SHERIDAN )

I HEREBY CERTIFY THAT THIS PLAT WAS FILED FOR RECORD IN MY OFFICE AT 2:00 O'CLOCK

THIS 12<sup>th</sup> DAY OF SEPT., 2002, AND FILED IN DRAWER 5, PLAT NUMBER 103

INSTRUMENT NO. 419221 FEE \$50.00

*Audrey Kottiska*  
COUNTY CLERK

STAMP RECEIVING NUMBER 419221

### SHADOW WOODS ESTATES SUBDIVISION

SITUATED IN THE N1/2SW1/4, SE1/4SW1/4  
OF SECTION 12, T53N, R84W, 6TH P.M.,  
SHERIDAN COUNTY, WYOMING

SUB DIVIDER: MAGIC BEAN, LLC  
ROBERT LOUIS ROTH  
620 MCBEE ROAD  
BELLBROOK OH 45305



PO BOX 3082  
SHERIDAN, WY 82801  
307-672-7415  
FAX 307-672-5000

JN: 200066  
DF: 2000/200066F  
NOVEMBER 03, 2001