

BOUNDARY LINE ADJUSTMENT

SW1/4NW1/4, W1/2SW1/4 SECTION 5, SE1/4NE1/4,
NE1/4SE1/4, S1/2SE1/4, SE1/4SW1/4, SECTION 6,
T57N, R85W, 6TH P.M., SHERIDAN COUNTY, WYOMING

FOR THE PURPOSE OF COMPLETING A BOUNDARY LINE ADJUSTMENT IN
ACCORDANCE WITH WYOMING LAW AND WHICH DOES NOT HAVE THE EFFECT
OF CREATING ANY NEW, SEPARATELY OWNED PARCEL.

Tract No.1

A tract of land being the SW1/4NW1/4, Section 5, the SE1/4NE1/4, NE1/4SE1/4, SE1/4SW1/4, SECTION 6 and portions of the NW1/4SW1/4, SECTION 5, S1/2SE1/4, SECTION 6, Township 57 North, Range 85 West, 6th P.M., Sheridan County, Wyoming, as shown on a RECORD OF SURVEY for a Boundary Line Adjustment filed at the Sheridan County Clerk's office, attached hereto and by this reference made a part hereof; said tract of land being more particularly described as follows:

BEGINNING at the south 1/16th corner common to said Sections 5 and 6; thence S89°15'36"W, 1229.08 feet along the south line of said NE1/4NE1/4 Section 6 to a 2" aluminum cap per PLS 5369; thence S007°16'44"E, 125.00 feet to a 2" aluminum cap per PLS 5369; thence S89°15'36"W, 776.05 feet to a 2" aluminum cap per PLS 5369; thence S007°16'35"E, 497.23 feet to a 2" aluminum cap per PLS 5369; thence S89°15'36"W, 963.95 feet to a 2" aluminum cap per PLS 5369; thence N007°16'35"W, 622.24 feet to a 2" aluminum cap per PLS 5369 lying on the north line of said SE1/4SW1/4 Section 6; thence N89°15'37"E, 303.06 feet along said north line to a 3/4" aluminum cap per PLS 5369 at the northeast corner of said SE1/4SW1/4; thence N89°15'36"E, 1333.00 feet along the north line of said SE1/4SW1/4 to a 3/4" aluminum cap per PLS 5369 at the southwest corner of said NE1/4NE1/4; thence N007°16'32"W, 1326.12 feet along the west line of said NE1/4NE1/4 to a 3/4" aluminum cap per PLS 5369 being the northwest corner of said NE1/4NE1/4; thence N007°16'10"W, 1319.84 feet along the west line of said NE1/4NE1/4 to a 3/4" aluminum cap per PLS 5369 being the northwest corner of said NE1/4NE1/4; thence N89°13'30"E, 1332.88 feet along the north line of said SE1/4SW1/4 to a 3/4" aluminum cap per PLS 5369 being the north 1/16th corner common to Sections 5 & 6; thence N89°28'32"E, 1331.81 feet along the north line of said SW1/4NW1/4 of Section 5 to a 2" aluminum cap per PLS 10566; thence S007°17'41"E, 1321.05 feet along the east line of said SW1/4NW1/4 to a 3/4" aluminum cap per PLS 5369 being the southeast corner of said SW1/4NW1/4; thence S007°17'44"E, 1208.35 feet along the east line of said NW1/4SW1/4 Section 5 to a point lying in the centerline of the Early Creek Road (County Road No.97) witnessed by a 2" aluminum cap per PLS 5369, bears S007°17'44"E a distance of 22 feet; thence N52°48'45"W, 306.00 feet along said centerline to a point; thence N50°58'46"W, 121.58 feet along said centerline to a point; thence N46°56'47"W, 106.74 feet along said centerline to a point; thence S89°26'29"W, 724.83 feet along said centerline to a point; thence S89°26'29"W a distance of 32 feet; thence S89°26'29"W, 724.83 feet along the north line of a Tract of Land described in Book 477 of Deeds, Page 126 to a 2" aluminum cap per PLS 5369 lying on the west line of said Section 5; thence S007°16'53"E, 650.46 feet along said west line to the POINT OF BEGINNING.

Said tract contains 161.98 acres of land, more or less.

Tract No.2

A tract of land being the SW1/4SW1/4 of Section 5, and portions of the NW1/4SW1/4 Section 5, S1/2SE1/4, SECTION 6, Township 57 North, Range 85 West, 6th P.M., Sheridan County, Wyoming, as shown on a RECORD OF SURVEY for a Boundary Line Adjustment filed at the Sheridan County Clerk's office, attached hereto and by this reference made a part hereof; said tract of land being more particularly described as follows:

BEGINNING at the southeast corner of said Section 6 (monumented with a 3/4" brass cap per PLS 537); thence S89°18'12"W, 2666.27 feet along the south line of said Section 6 to a 3/4" aluminum cap per PLS 5369 being the 1/4 corner common to Sections 6 & 7; thence S89°18'12"W, 1333.13 feet along said south line to a 3/4" aluminum cap per PLS 5369 being the west 1/16th corner common to Sections 6 & 7; thence N007°16'32"W, 1324.12 feet along the west line of said SE1/4SW1/4 to a 3/4" aluminum cap per PLS 5369 being the northwest corner of said SE1/4SW1/4; thence N89°15'37"E, 1028.99 feet along the north line of said SE1/4SW1/4 to a 2" aluminum cap per PLS 5369; thence S007°16'35"E, 622.24 feet to a 2" aluminum cap per PLS 5369; thence N89°15'36"E, 963.95 feet to a 2" aluminum cap per PLS 5369; thence N007°16'35"W, 497.23 feet to a 2" aluminum cap per PLS 5369; thence N89°15'36"E, 776.05 feet to a 2" aluminum cap per PLS 5369; thence N007°16'44"E, 125.00 feet to a 2" aluminum cap per PLS 5369 lying on the north line of said SE1/4SW1/4; thence N89°15'36"E, 1229.08 feet along said north line to the northeast corner of said SE1/4SW1/4 (monumented with a 3/4" aluminum cap per PLS 5369); thence N007°16'53"W, 650.46 feet along the west line of said NW1/4SW1/4 Section 5 to a 2" aluminum cap per PLS 5369; thence N89°26'29"E, 724.83 feet along the north line of a tract of land described in Book 477 of Deeds, Page 126 to a point lying in the centerline of the Early Creek Road (County Road No.97) witnessed by a 2" aluminum cap per PLS 5369, bears S89°26'29"W a distance of 32 feet; thence S45°05'49"E, 274.22 feet along said centerline to a point; thence S46°59'47"E, 106.74 feet along said centerline to a point; thence S50°58'46"E, 121.58 feet along said centerline to a point; thence S52°48'45"E, 306.00 feet along said centerline to a point lying on the east line of said NW1/4SW1/4 witnessed by a 2" aluminum cap per PLS 5369, bears S007°17'44"E a distance of 22 feet; thence S007°17'44"E, 117.63 feet along said east line to the northeast corner of said SW1/4SW1/4 of Section 5 not monumented this survey; thence S007°17'44"E, 1325.98 feet along the east line of said SW1/4SW1/4 to a 3/4" aluminum cap per PLS 5369 being the southeast corner of said SW1/4SW1/4; thence S89°26'13"W, 1333.05 feet along the south line of said SW1/4SW1/4 to the POINT OF BEGINNING.

Said tract contains 162.23 acres of land, more or less.

Parcel No.1

A parcel of land situated in the S1/2SE1/4 and SE1/4SW1/4 of Section 6, Township 57 North, Range 85 West, 6th P.M., Sheridan County, Wyoming, as shown on a RECORD OF SURVEY for a Boundary Line Adjustment filed at the Sheridan County Clerk's office, attached hereto and by this reference made a part hereof; said tract of land being more particularly described as follows:

BEGINNING at the northeast corner of the SW1/4SW1/4 of said Section 6 (monumented with a 3/4" aluminum cap per PLS 5369); thence N89°15'36"E, 103.92 feet along the north line of said SE1/4SW1/4 to a 2" aluminum cap per PLS 5369; thence S007°16'44"E, 125.00 feet to a 2" aluminum cap per PLS 5369; thence S89°15'36"W, 776.05 feet to a 2" aluminum cap per PLS 5369; thence S007°16'35"E, 497.23 feet to a 2" aluminum cap per PLS 5369; thence N007°16'35"W, 622.24 feet to a 2" aluminum cap per PLS 5369 lying on the north line of said SE1/4SW1/4 Section 6; thence N89°15'37"E, 303.06 feet along said north line to a 3/4" aluminum cap per PLS 5369 at the northeast corner of said SE1/4SW1/4; thence N89°15'36"E, 1333.00 feet along the north line of said SE1/4SW1/4 to the POINT OF BEGINNING.

Said parcel contains 16.00 acres of land, more or less.

Parcel No.2

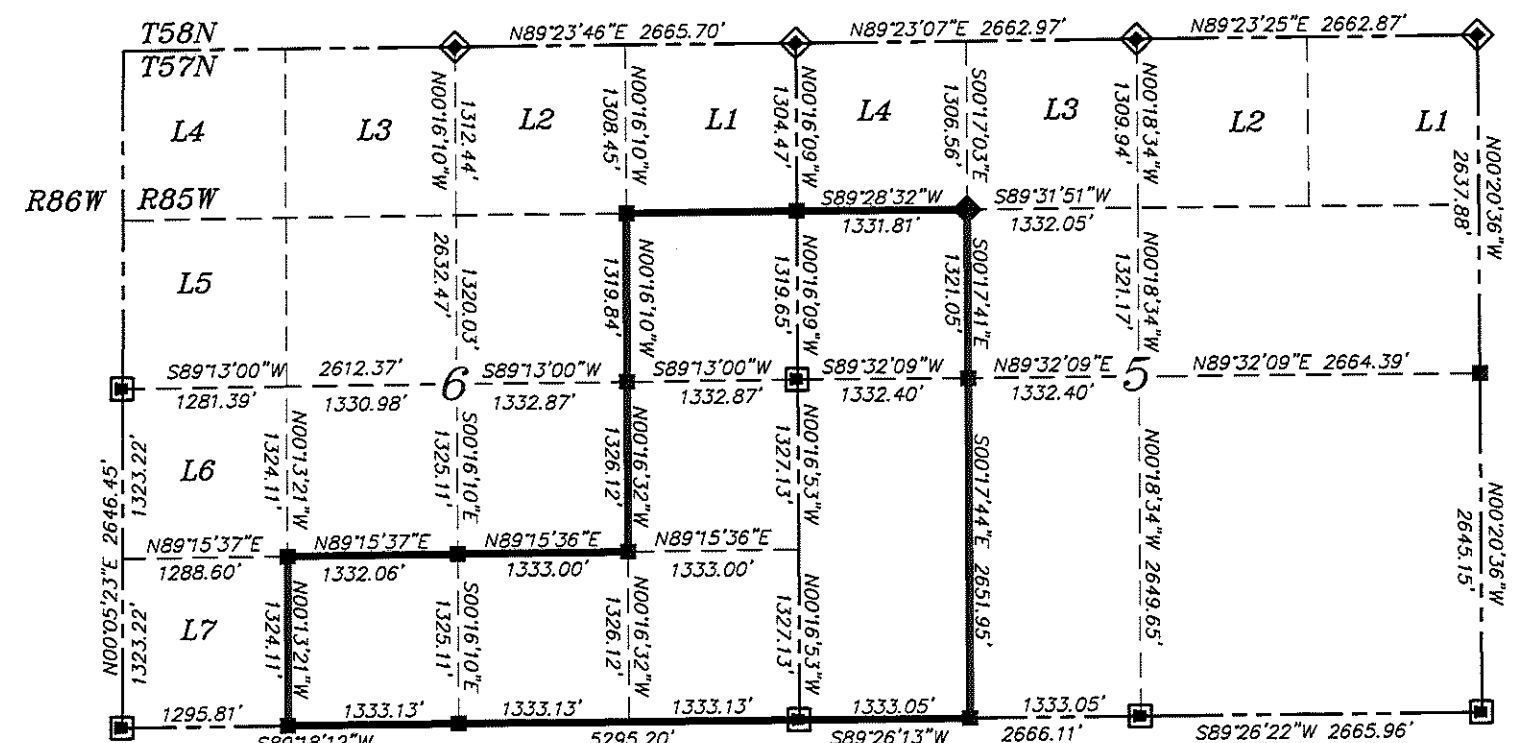
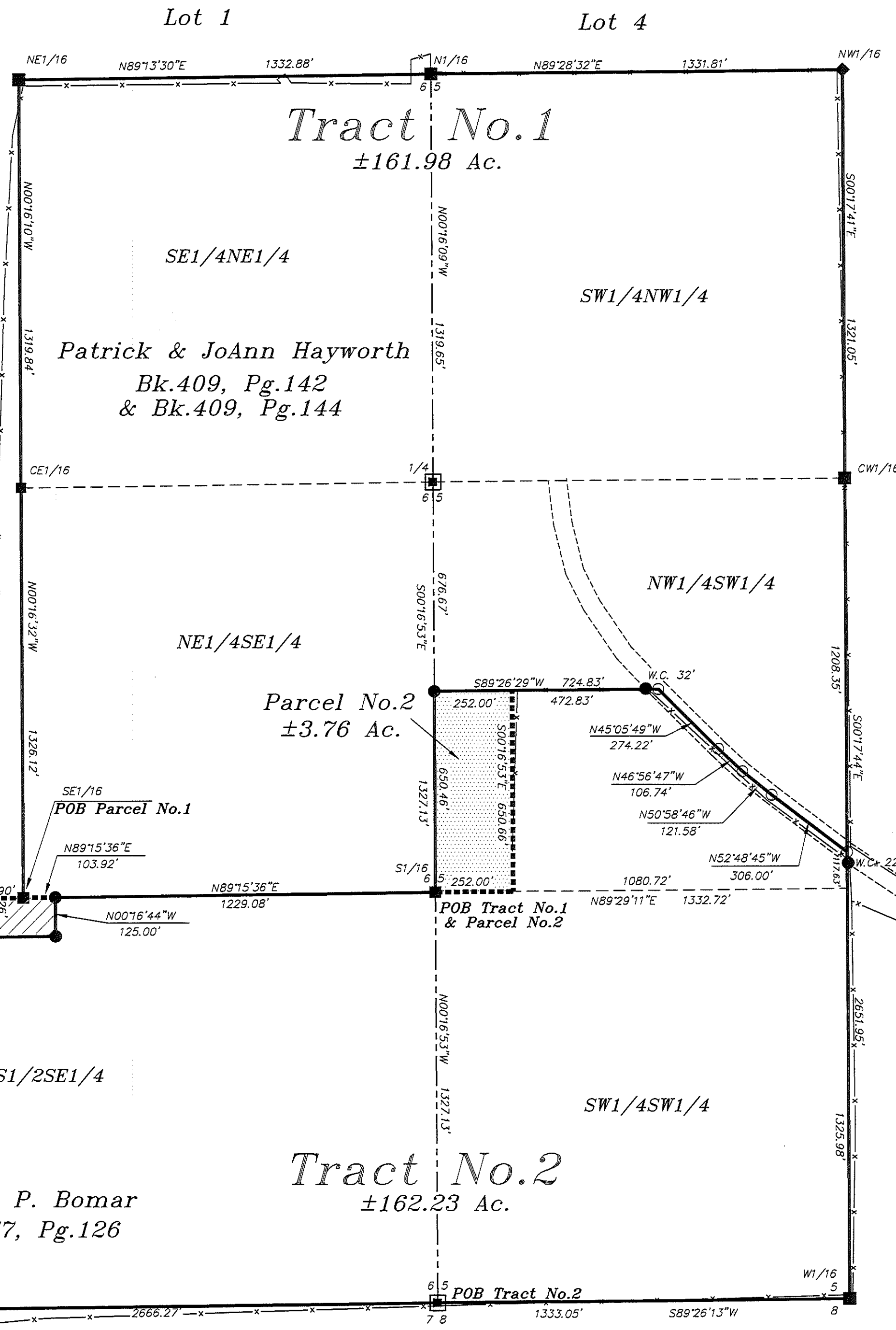
A parcel of land situated in the NW1/4SW1/4 of Section 5, Township 57 North, Range 85 West, 6th P.M., Sheridan County, Wyoming, as shown on a RECORD OF SURVEY for a Boundary Line Adjustment filed at the Sheridan County Clerk's office, attached hereto and by this reference made a part hereof; said tract of land being more particularly described as follows:

BEGINNING at the southwest corner of said NW1/4SW1/4 (monumented with a 3/4" aluminum cap per PLS 5369); thence N007°16'53"W, 650.46 feet along the west line of said NW1/4SW1/4 to a 2" aluminum cap per PLS 5369; thence N89°26'29"E, 252.00 feet to a point being the northwest corner of a tract of land described in Book 477 of Deeds, Page 126, not monumented this survey; thence S007°16'53"E, 650.46 feet along the west line of said tract described in Book 477 of Deeds, Page 126 to the southwest corner of said tract lying on the south line of said NW1/4SW1/4 not monumented this survey; thence S89°29'11"W, 252.00 feet along said south line to the POINT OF BEGINNING.

Said parcel contains 3.76 acres of land, more or less.

LEGEND

●	SET 2" ALUMINUM CAP PER PLS 5369
◆	BLM BRASS CAP
◻	BRASS CAP PER PLS 537
◻	SET 3-1/4" ALUMINUM CAP PER PLS 5369
◻	2" ALUMINUM CAP PER PLS 10566
—	SECTION LINE
- - -	SECTION LINE
- - -	INTERIOR SECTION LINE
- - -	PROPERTY LINE
- - -	FENCE LINE
- - -	COMMON LINE TO BE ADJUSTED
▨	±3.76 ACRE TRACT HAYWORTH TO BOMAR
▨	±16.00 ACRE TRACT BOMAR TO HAYWORTH



LOCATION MAP

NOTICE
This plat is an image, or reproduction of the original as is recorded in the
Sheridan County Clerk's Office. It is not a certified, complete or
authoritative depiction of current property lines, easements or rights-of-
way. Delineation, measurement or representations may have occurred
since the original plat was recorded.



SCALE: 1"=300'

BASIS TABLE

BEARINGS: BASED ON THE WYOMING COORDINATE SYSTEM
NAD 1983, EAST CENTRAL ZONE
DISTANCES ARE SURFACE
DATUM ADJUSTMENT FACTOR (DAF): 1.000248

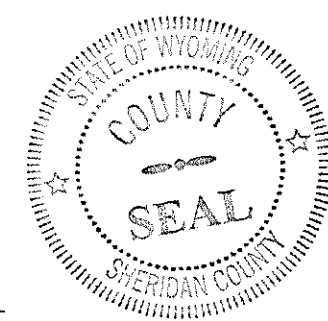
CERTIFICATE OF RECORDER

STATE OF WYOMING
COUNTY OF SHERIDAN

THIS PLAT WAS FILED FOR RECORD IN THE OFFICE OF THE CLERK AND RECORDER AT 2:01 O'CLOCK P.M.,
THIS 29, DAY OF October, 2015, AND IS DULY RECORDED IN DRAWER A-498 PLAT NO.
FEE \$ 56.00

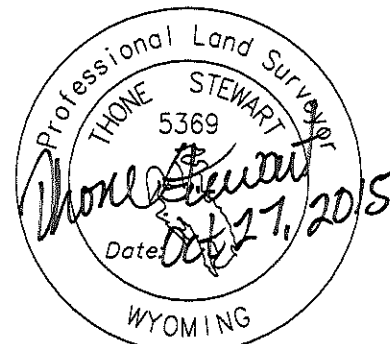
Eda Spunk Thompson
COUNTY CLERK

STAMP RECEIVING NUMBER 205-722701



CERTIFICATE OF SURVEYOR

I, THOMAS STEWART, A DULY REGISTERED LAND SURVEYOR IN THE
STATE OF WYOMING, DO HEREBY STATE, BASED ON MY KNOWLEDGE
AND INFORMATION, THE ABOVE PLAT IS A VALID REPRESENTATION
OF A SURVEY MADE BY ME, OR UNDER MY DIRECT SUPERVISION.



BOUNDARY LINE ADJUSTMENT

CLIENT: RANDY BOMAR, P & J HAYWORTH

SECTION 5: SW1/4NW1/4, W1/2SW1/4
SECTION 6: SE1/4NE1/4, NE1/4SE1/4, S1/2SE1/4, SE1/4SW1/4
T57N, R85W, 6TH P.M., SHERIDAN COUNTY, WYOMING



2340 WETLANDS DR., SUITE 100
PO BOX 3082
SHERIDAN, WY 82801
307-672-7415
FAX 674-5000

JN: 2015-076
DN: 2015-076D
TGO: 12015-076
OCTOBER, 2015

498