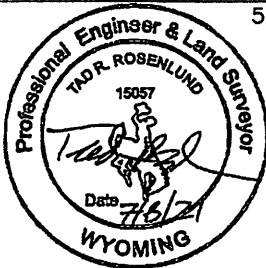
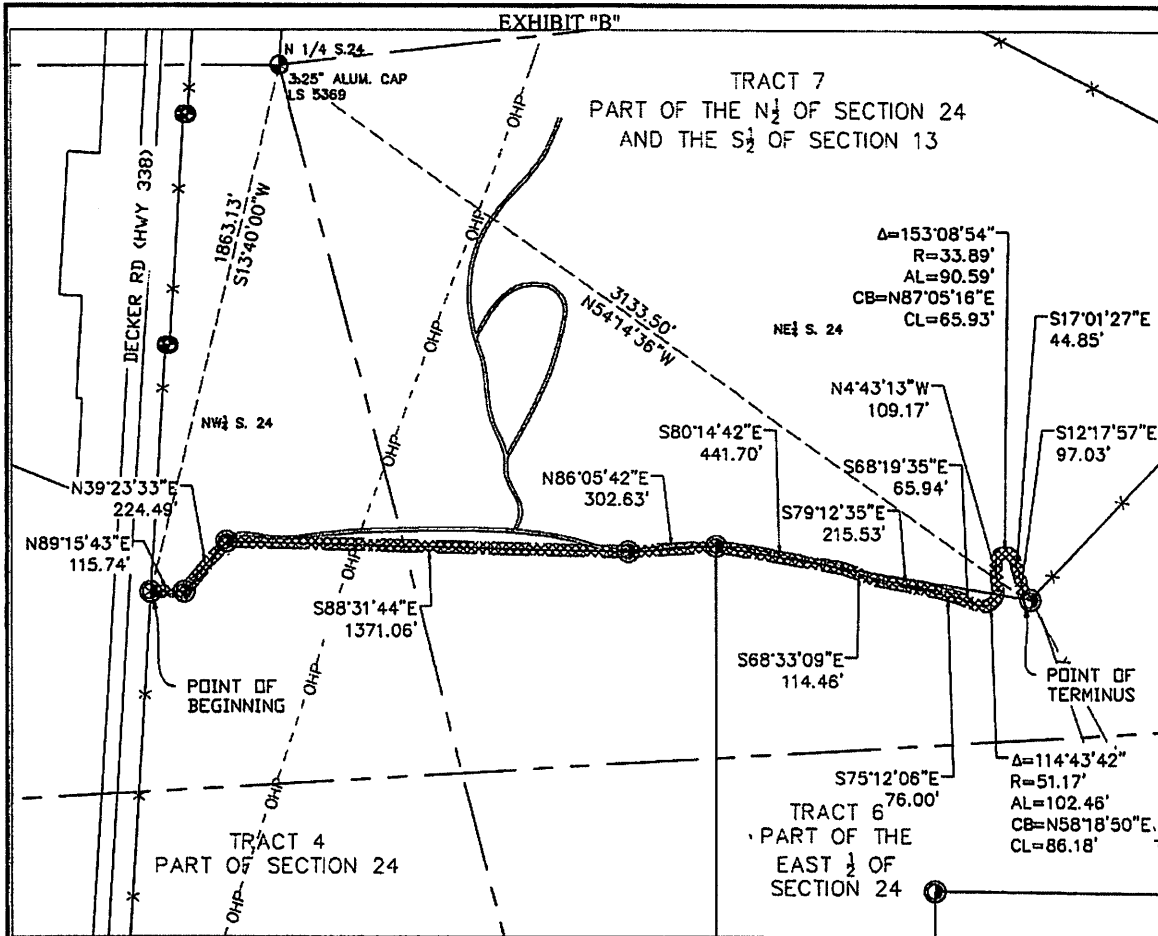
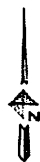


EXHIBIT B - 1 of 1

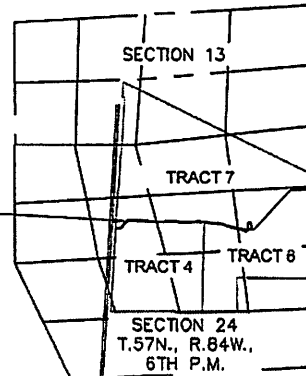


500 0 500  
SCALE IN FEET



**SURVEYOR'S CERTIFICATE:**  
I, TAD R. ROSENBLUND, DO HEREBY CERTIFY THAT THIS PLAT  
WAS MADE FROM AN ACTUAL FIELD SURVEY PERFORMED BY ME  
OR UNDER MY DIRECT SUPERVISION AND THAT IT CORRECTLY  
SHOWS THE LOCATION TO THE BEST OF MY KNOWLEDGE.

EASEMENT LOCATION



LOCATION MAP  
N.T.S.

The basis of bearing is Wyoming State Plane  
Coordinate System, NAD 83, East Central Zone;  
PAF: 1.000233; all units are U.S. survey feet.  
Distances are at ground.



**EXHIBIT B**  
ACCESS AND UTILITY EASEMENT FOR  
TRACTS 4, 6, AND 7 SE DECKER ROAD  
SITUATED IN SECTION 24, T57N, R84W, 6TH P.M., SHERIDAN  
COUNTY, WYOMING

PROJECT **BLACK GOLD**  
DATE **7/8/2021**

**EXHIBIT B - 1 of 1**