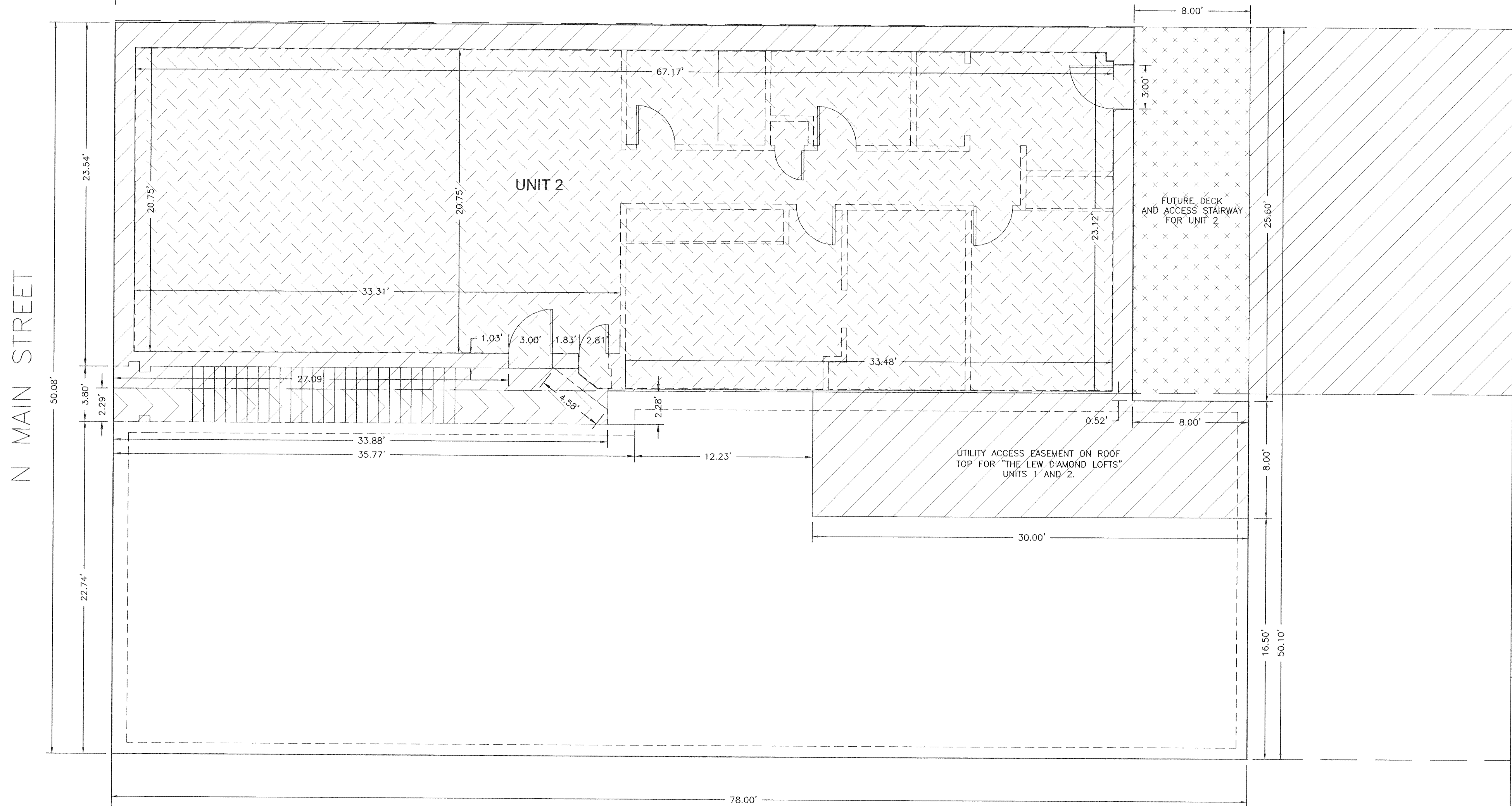


CONDOMINIUM MAP OF  
**THE LEW DIAMOND LOFTS**

BEING A CONDOMINIUM OF LOT 13, BLOCK 2, GRINNELL ADDITION, CITY OF SHERIDAN,  
LOCATED IN THE SE $\frac{1}{4}$ NE $\frac{1}{4}$ , SECTION 27, T56N, R84W, 6TH P.M., SHERIDAN COUNTY, WYOMING  
LOT AREA:  $\pm$ 3,739 SQUARE FEET

NOTICE  
This plat is an image, or reproduction of the original as is recorded in the  
**Sheridan County Clerk's Office**. It is not a certified, complete or  
authoritative depiction of current property lines, easements or rights-of-  
way. Delineations, measurement or representations may have occurred  
since the original plat was recorded.



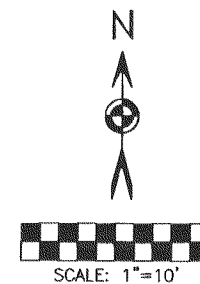
**DEFINITIONS**

THE FOLLOWING TERMINOLOGY IS IN ACCORDANCE WITH THE  
CONDOMINIUM OWNERSHIP ACT, WYOMING STATUTES, 1977, AS  
AMENDED, SECTION 34-20-101 THROUGH 34-20-104.

A) "UNITS"— MEANS AN INDIVIDUAL AIR SPACE UNIT TOGETHER  
WITH THE INTEREST IN COMMON ELEMENTS APPURTENANT TO  
SUCH UNIT, AS DESCRIBED IN THE DECLARATION OF  
CONDOMINIUM OF PROSPER BUILDING FILED OF RECORD WITH  
THE SHERIDAN COUNTY CLERK'S OFFICE, AS ILLUSTRATED  
HEREIN.

B) "GENERAL COMMON ELEMENT" — MEANS THE AREA  
DESCRIBED IN THAT DECLARATION OF CONDOMINIUM OF  
PROSPER BUILDING FILED OF RECORD WITH THE SHERIDAN  
COUNTY CLERK'S OFFICE, AS ILLUSTRATED HEREIN.

C) "LIMITED COMMON ELEMENT" — MEANS THE AREA DESCRIBED  
IN THAT DECLARATION OF CONDOMINIUM OF PROSPER BUILDING  
FILED OF RECORD WITH THE SHERIDAN COUNTY CLERK'S  
OFFICE, AS ILLUSTRATED HEREIN.



BASIS OF BEARINGS IS  
US STATE PLANE, NAD 83  
WYOMING EAST CENTRAL ZONE  
DISTANCES ARE GROUND (US SURVEY FEET)  
PAF:1.000235

**LEGEND**

- WALL LAYOUT
- LOT LINE
- ////// GENERAL COMMON AREA
- \*\*\*\*\* LIMITED COMMON ELEMENT
- >>>>>> ACCESS EASEMENT
- ////// GENERAL COMMON ELEMENT FOR UNIT 1 AND UNIT 2 UTILITY ACCESS



THE LEW DIAMOND LOFTS  
SECOND FLOOR

SECOND FLOOR — PAGE 4 OF 5