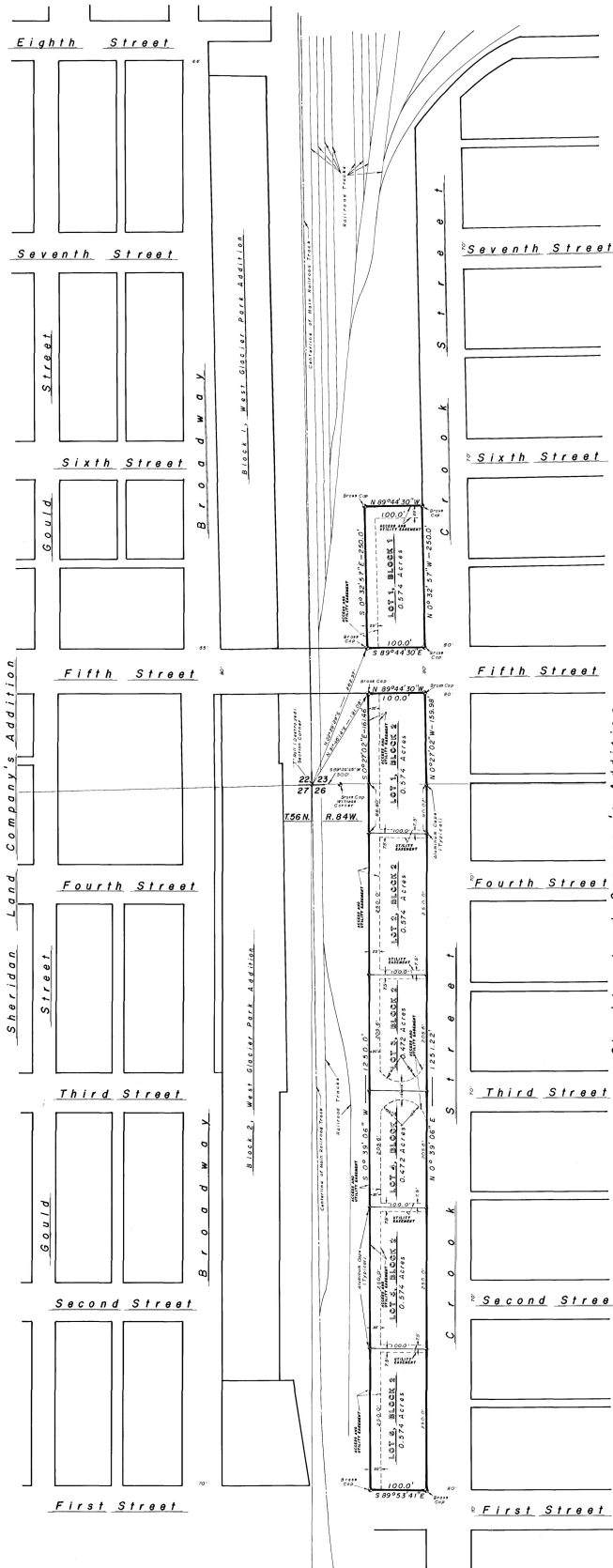


EAST GLACIER PARK ADDITION

SCALE : 1" = 100'



LEGAL DESCRIPTION

Two tracts of land described as follows:
The first tract of land to be known as Block 1, East Glacier Park Addition, is situated in the SW 1/4 SW 1/4 of Section 23, Township 36 North, Range 84 West of the Sixth Principal Meridian, Sheridan County, Wyoming; more particularly described as follows:
Beginning at a point which bears N 22°28'29" E a distance of 262.37 feet from the Southwest corner of said Section 23; said point of beginning lying on the North right-of-way line of Fifth Street; thence along the North right-of-way line of Fifth Street, S 83°44'30" E for a distance of 100.0 feet, to a point on the West right-of-way line of Crook Street; thence N 0°32'57" W along the West right-of-way line of Crook Street for a distance of 250.0 feet; thence N 89°44'30" W for a distance of 100.0 feet; thence S 0°32'57" E for a distance of 250.0 feet to the point of beginning.
Said tract of land contains 0.574 acres.

The second tract of land to be known as Block 2, East Glacier Park Addition, is situated in the SW 1/4 SW 1/4 of Section 23 and in the NW 1/4 NW 1/4 of Section 26, Township 36 North, Range 84 West of the Sixth Principal Meridian, Sheridan County, Wyoming; more particularly described as follows:
Beginning at a point which bears N 31°46'11" E a distance of 191.08 feet from the Southwest corner of said Section 23; thence S 0°27'02" E for a distance of 161.46 feet; thence S 0°39'06" W for a distance of 1250.0 feet; thence S 89°53'41" E for a distance of 100.0 feet to a point on the West right-of-way line of Crook Street; thence along the West right-of-way line of Crook Street, N 0°39'06" E for a distance of 1251.22 feet; thence continuing along the West right-of-way line of Crook Street N 0°27'02" W for a distance of 159.38 feet to a point on the South right-of-way line of Fifth Street; thence N 89°44'30" W along the South right-of-way line of Fifth Street for a distance of 100.0 feet to the point of beginning.
Said tract of land contains 3.24 acres.

CERTIFICATE of DEDICATION

The undersigned, Johan Magnusson, hereby certifies that he is the owner of the land described above and shown on this plat as East Glacier Park Addition.
This plat is proposed and offered with free consent and is in accordance with the desires of the undersigned owner and proprietor. The undersigned owner and proprietor does hereby release and waive all rights under and by virtue of the Homestead Exemption Laws of the State of Wyoming.
Easements are hereby dedicated for the purpose of maintaining public utilities and for emergency and service vehicle access as shown on this plat.

Johan Magnusson
Johan Magnusson

State of Massachusetts
County of Suffolk

On this 18th day of April, 1977, before me, a Notary Public in and for the State of Massachusetts, personally appeared Johan Magnusson, known to me to be the person who signed the foregoing instrument and who acknowledged to me that he executed the same. Witness my hand and seal the day and year hereinabove written.

Steven M. Moriarty
Notary Public in and for the State of
Massachusetts
Residing at Bedford, MA
My commission expires 03/30/2000

CITY ENGINEER'S CERTIFICATE of APPROVAL

Approved by the City Engineer of Sheridan, Wyoming this 30th day of May, 1977.
Attest: *Ken A. Brown* EIT

CITY of SHERIDAN CERTIFICATE of APPROVAL

Approved by the City Planning Commission this 5th day of May, 1977.
Attest: *David H. Hadd*
Approved by the Mayor and City Clerk in and for the City of Sheridan, Sheridan County, Wyoming on this 5th day of June, 1977.
Attest: *James W. Wiles* Mayor
Randy M. Hardy City Clerk

CERTIFICATE of RECORDER

State of Wyoming
County of Sheridan } ss
I hereby certify that this plat was filed for record in my office at 3:00 o'clock P. M. this 16th day of June, 1977 and recorded in Drawer Number 12.
David P. Paulding
Recorder

CERTIFICATE of SURVEYOR

State of Wyoming } ss
County of Sheridan }
I, David L. Randall, of Sheridan, Wyoming being a duly registered Professional Civil Engineer and Land Surveyor in the State of Wyoming, hereby certify that this plat was made from field notes of an actual survey performed by me in December of 1930 through March of 1932; from records on file in the Sheridan County Clerk's Office, Sheridan, Wyoming; from records on file in the City Engineer's Office, Sheridan, Wyoming; and from information available on railroad maps.
This plat correctly represents all of the data shown hereon.



Registration No. 3159 PESLS

PLAT of EAST GLACIER PARK ADDITION

in the SW 1/4 SW 1/4 of SECTION 23 and NW 1/4 NW 1/4 of SECTION 26, TOWNSHIP 36 NORTH, RANGE 84 WEST SIXTH PRINCIPAL MERIDIAN SHERIDAN COUNTY, WYOMING

for JJD PARTNERSHIP
TRANSWESTERN II PLAZA
490 NORTH 31ST STREET, SUITE 205
BILLINGS, MONTANA 59101