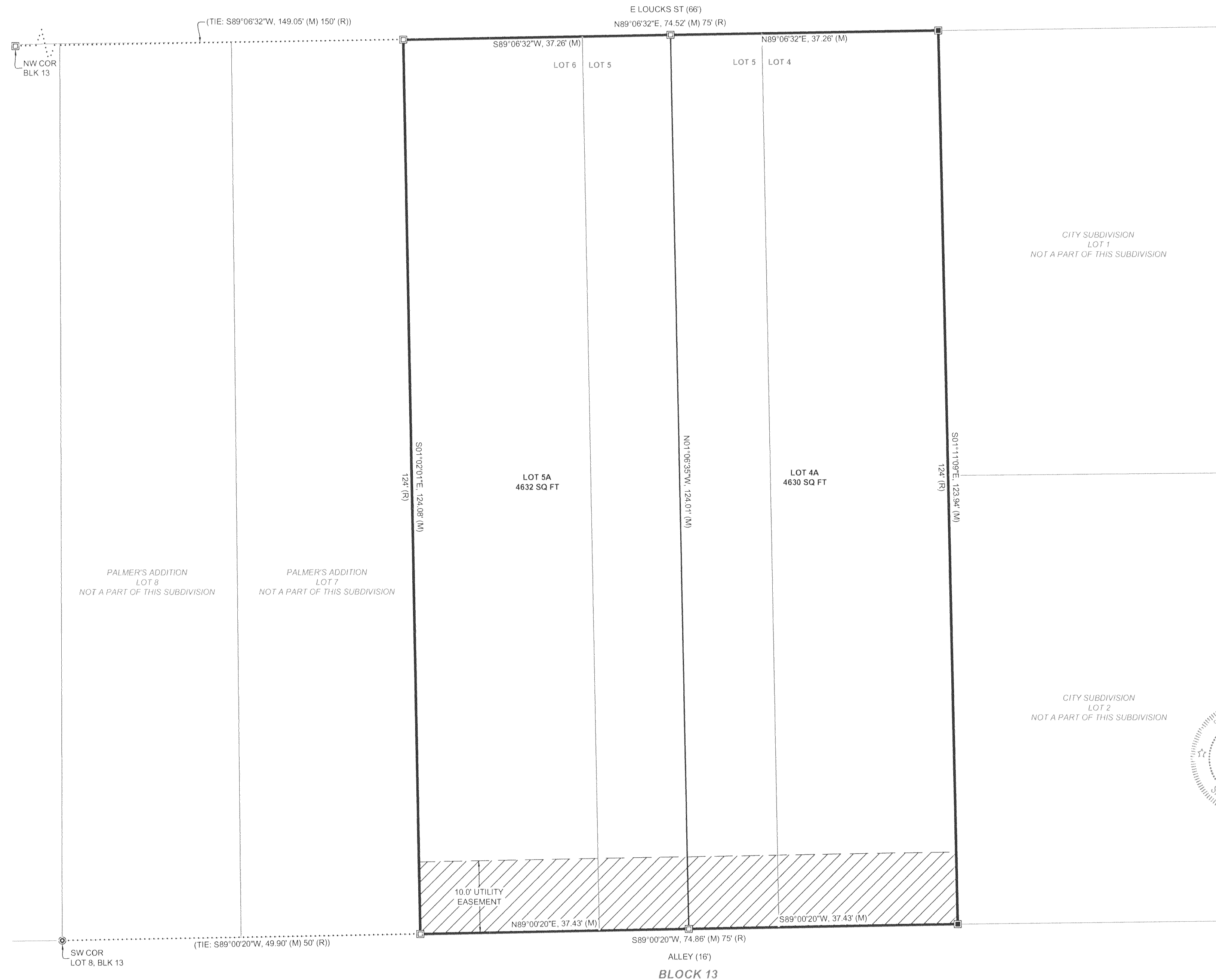


**BEING LOTS 4, 5 & 6 OF BLOCK 13, PALMER'S ADDITION TO THE CITY OF SHERIDAN
WITHIN THE NE1/4SW1/4 OF SECTION 26, T56N, R84W, 6TH P.M.
CITY OF SHERIDAN, SHERIDAN COUNTY, WYOMING**



SHEET
1 of 1