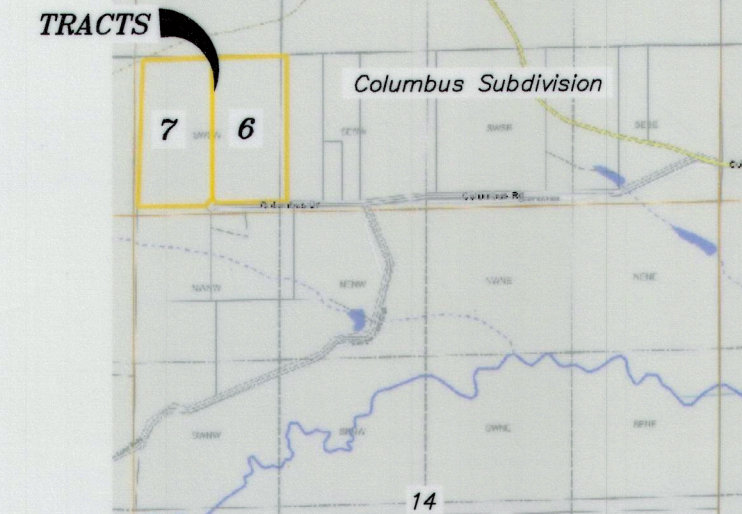


RECORD OF SURVEY

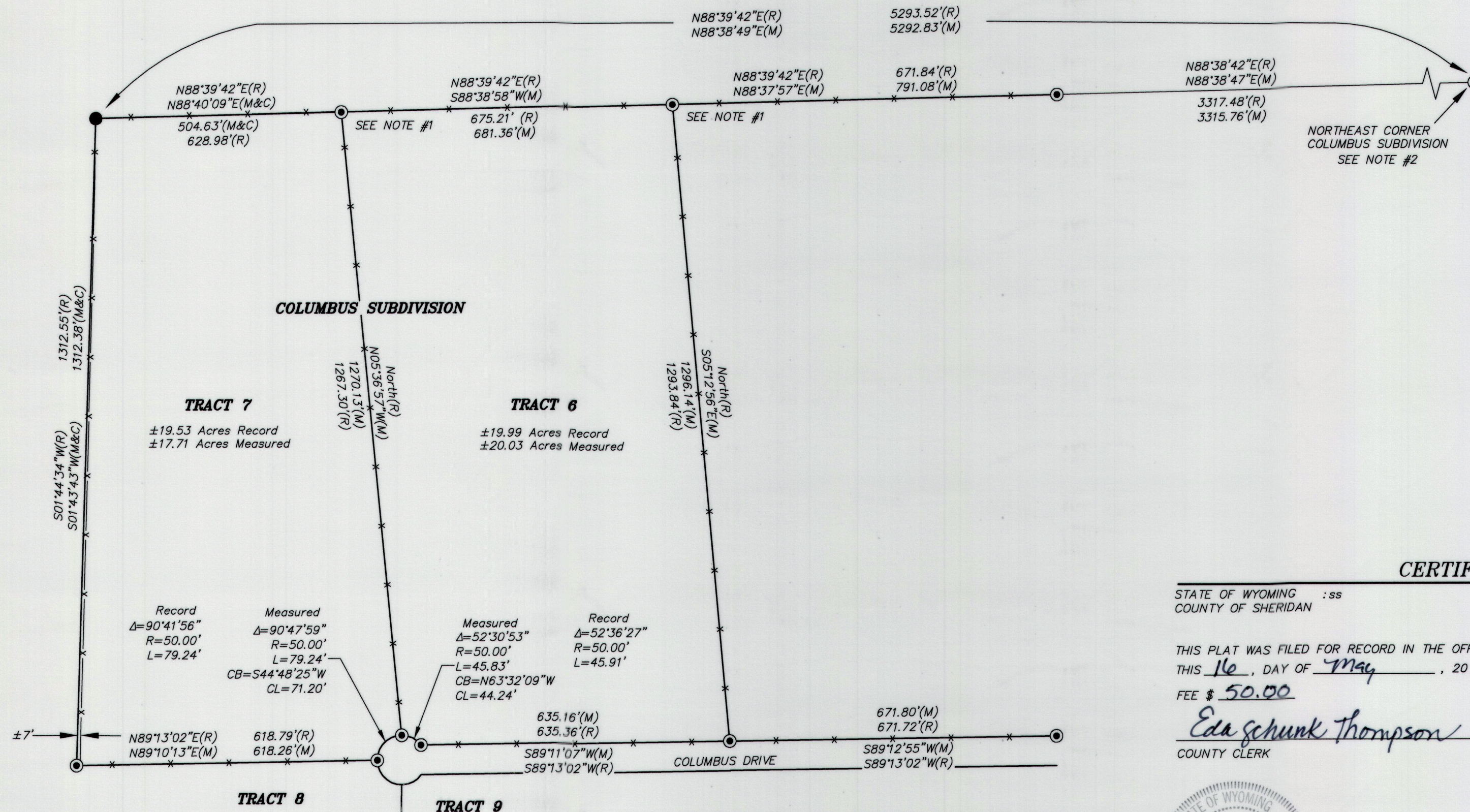
SITUATED IN TRACTS 6 & 7, COLUMBUS SUBDIVISION, SHERIDAN COUNTY, WYOMING

THE PURPOSE OF THIS RECORD OF SURVEY IS TO RECORD A BLUNDERED ORIGINAL SUBDIVISION SURVEY OF TRACTS 5, 6 AND 7 OF THE COLUMBUS SUBDIVISION, LOCATED IN SECTIONS 11 AND 14, T57N, R87W, 6TH P.M., SHERIDAN COUNTY, WY.

T57N, R87W



LOCATION MAP
NTS



CERTIFICATE OF RECORDER

STATE OF WYOMING :ss
COUNTY OF SHERIDAN

THIS PLAT WAS FILED FOR RECORD IN THE OFFICE OF THE CLERK AND RECORDER AT 10:47 O'CLOCK A.M.,
THIS 16, DAY OF May, 2023, AND IS DULY RECORDED AS SURVEY A, NO. 698
FEE \$ 50.00

Eda Schunk Thompson
COUNTY CLERK
STAMP RECEIVING NUMBER 2023-785559

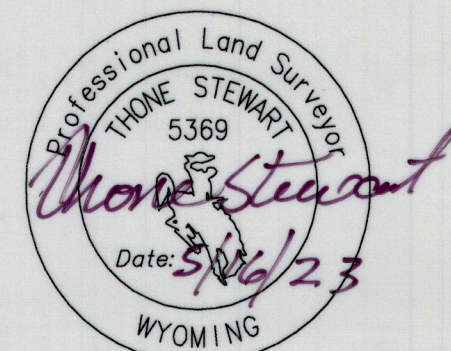


NOTES

1. THE NORTHEAST CORNERS OF TRACT 6 AND TRACT 7 WERE SET ±124 FEET WEST OF THE POSITIONS THAT ARE RECORDED ON THE PLAT OF THE COLUMBUS SUBDIVISION. CONSEQUENTLY THIS CAUSED A SHORTAGE ALONG THE NORTH LINE OF TRACT 7 AND AN EXCESS ALONG THE NORTH LINE OF TRACT 6. TRACT 5 WAS LATER SUBDIVIDED INTO THE DANIELS SUBDIVISION. THE BLUNDERED MONUMENTS WERE ACCEPTED BY THE LANDOWNERS, FENCES, DRIVEWAYS AND SMALL BUILDINGS WERE CONSTRUCTED NEAR THE BOUNDARY LINE BETWEEN TRACTS 6 AND 7.
2. THE NORTHWEST CORNER OF THE COLUMBUS SUBDIVISION WAS NOT RECOVERED THIS SURVEY. TESTIMONY OF THE ADJOINING LANDOWNER PLACED THE SUBDIVISION CORNER AT THE EXISTING FENCE CORNER. THE MONUMENT SET THIS SURVEY WAS POSITIONED PER A COMPASS RULE ADJUSTMENT HOLDING THE SOUTHWEST CORNER OF TRACT 7 AND THE NORTHEAST CORNER OF THE SUBDIVISION. THAT ADJUSTMENT PLACES THE MONUMENT ALONGSIDE THE FENCE CORNER AT THE NORTHWEST CORNER OF TRACT 7.
3. BECAUSE OF THE ERRORS DISCOVERED DURING THIS SURVEY THE ORIGINAL MONUMENTS RECOVERED WERE NOT CAPPED OR REPLACED. THEY ARE LEFT IN THEIR ORIGINAL STATE FOR SUBSEQUENT RETRACEMENT EFFORTS.

CERTIFICATE OF SURVEYOR

I, THONE STEWART, A DULY REGISTERED LAND SURVEYOR IN THE STATE OF WYOMING, DO HEREBY STATE THAT THIS PLAT REPRESENTS THE RESULTS OF A SURVEY MADE BY ME OR UNDER MY DIRECT SUPERVISION.



Record of Survey

SITUATED IN TRACTS 6 & 7, COLUMBUS SUBDIVISION
SHERIDAN COUNTY, WYOMING

RESTFELDT
SURVEYING
2340 WETLANDS DR., SUITE 100
PO BOX 3082
SHERIDAN, WY 82801
307-672-7415

CLIENT: FRED BLUMENSTOCK
25 COLUMBUS DRIVE
PARKMAN, WY 82838

JN: 2023-018
DN: 2023-018D
TAB: MODEL
PF: T2018-001
REVIEWED BY: DGR
MAY, 2023

LEGEND:

- FOUND 5/8" REBAR (SEE NOTE 3)
- SET 2" ALUMINUM CAP PER PLS 5369 (SEE NOTE 2)
- (R) RECORD PER COLUMBUS SUBDIVISION PLAT
- (M) MEASURED
- (C) CALCULATED
- PROPERTY/DEED LINE
- x- FENCE LINE

SCALE: 1"=200'

BEARINGS ARE BASED ON THE WYOMING COORDINATE SYSTEM, NAD 1983, EAST CENTRAL ZONE. DISTANCES ARE MULTIPLIED TO SURFACE BY THE ADJUSTMENT FACTOR OF 1.000285.