

DEDICATION AND ACKNOWLEDGEMENT

KNOW ALL MEN BY THESE PRESENTS THAT THE REAL PROPERTY EMBRACED IN THIS PLAT IS THE S 1/2 NW 1/4, THE NW 1/4 OF THE SW 1/4 AND ALL OF THE NE 1/4 OF THE SW 1/4 EXCEPT THAT PART LYING SOUTHEASTERLY OF THE SOUTHEASTLY RIGHT OF WAY LINE OF WYOMING SECONDARY STATE HIGHWAY, DESCRIBED AS FOLLOWS: BEGINNING AT THE SOUTHEAST CORNER OF SAID NE 1/4 SW 1/4, THENCE NORTH 128 FEET, MORE OR LESS TO A POINT ON SAID RIGHT OF WAY LINE, THENCE SOUTHWESTERLY ALONG SAID RIGHT OF WAY LINE TO A POINT ON THE SOUTH LINE OF SAID NE 1/4 SW 1/4, WHICH POINT IS 400 FEET WEST OF THE SE CORNER OF SAID NE 1/4 SW 1/4, AND THENCE EAST 400 FEET, MORE OR LESS, TO THE POINT OF BEGINNING, ALSO THAT PART OF LOT 4 (NW 1/4 NW 1/4) DESCRIBED AS FOLLOWS: COMMENCING AT THE SOUTHWEST CORNER OF LOT 4, THENCE EAST 589 FEET, TO A POINT, THENCE NORTHWESTERLY 749 FEET, MORE OR LESS, TO A POINT 867 FEET SOUTH OF THE NORTHWEST CORNER OF SEC. 2, THENCE SOUTH ALONG THE WEST LINE OF SAID LOT 4 TO THE POINT OF BEGINNING LYING WHOLLY WITHIN SECTION 2 T 55 N R 85 W OF THE 6th P.M. SHERIDAN, COUNTY WYOMING BEING MORE PARTICULARLY DESCRIBED BY METES AND BOUNDS AS FOLLOWS: A TRACT OF LAND LOCATED IN THE W 1/2 OF SECTION 2 T 55 N, R 85 W OF THE 6th P.M. SHERIDAN, COUNTY WYOMING, BEING MORE PARTICULARLY DESCRIBED AS FOLLOWS:

BEGINNING AT A POINT WHICH IS THE NW COR. NW 1/4 SW 1/4 SECTION 2, SAID POINT BEING MONUMENTED WITH A 3/4 INCH REBAR 3" BENEATH THE GROUND LYING IN THE APPROXIMATE CENTERLINE OF A COUNTY ROAD,

THENCE N 0°29'20"W A DISTANCE OF 1308.23 FEET;
 THENCE N 0°31'01"W A DISTANCE OF 445.17 FEET;
 THENCE S 53°20'02"E A DISTANCE OF 744.19 FEET;
 THENCE N 88°12'20"E A DISTANCE OF 2029.30 FEET;
 THENCE S 0°48'22"E A DISTANCE OF 2520.17 FEET;
 THENCE S 0°42'17"E A DISTANCE OF 64.66 FEET;
 THENCE S 8°15'21"W A DISTANCE OF 84.10 FEET TO A POINT ON A CURVE WHOSE RADIUS IS 2834.80 FEET
 AND WHOSE LONG CHORD BEARS S 75°05'35" W A DISTANCE OF 870.4 FEET;
 THENCE S 74°12'48" W A DISTANCE OF 323.76 FEET;
 THENCE N 89°35'44" W A DISTANCE OF 1186.08 FEET;
 THENCE S 89°33'46" W A DISTANCE OF 258.71 FEET;
 THENCE N 89°43'30" W A DISTANCE OF 717.86 FEET;
 THENCE N 0°10'04" W A DISTANCE OF 609.13 FEET; THENCE N 0°15'04" W A DISTANCE OF 714.87 FEET TO THE POINT OF BEGINNING. SAID TRACT CONTAINING 163.16 ACRES MORE OR LESS.

THE ABOVE OR FOREGOING SUBDIVISION, AS APPEARS ON THIS PLAT, IS WITH FREE CONENT, AND IN ACCORDANCE WITH THE DESIRES OF THE UNDERSIGNED OWNERS AND PROPRIETORS, CONTAINING 163.16 ACRES MORE OR LESS, HAVE BY THESE PRESENTS LAID OUT, AND SURVEYED AS BLUE GRASS MEADOWS SUBDIVISION, AND DO HEREBY DEDICATE AND CONVEY TO AND FOR PUBLIC USE FOREVER HEREAFTER THE STREETS AS ARE LAID OUT AND DESIGNATED ON THIS PLAT, AND DO ALSO RESERVE PERPETUAL EASEMENTS FOR PUBLIC USE FOR POLES, WIRES, PIPES, CONDUITS FOR HEATING, LIGHTING ELECTRICITY, GAS, TELEPHONES, SEWER, WATER, CABLE TELEVISION, OR OTHER PUBLIC OR QUASI-PUBLIC UTILITY SERVICE PURPOSES, TOGETHER WITH THE RIGHT OF ENTRY AT ANY TIME FOR THE PURPOSE OF FURTHER CONSTRUCTION OR REPAIR; HEREBY RELEASING AND WAIVING ALL HOMESTEAD RIGHTS.

EXECUTED THIS 30th DAY OF August, 1982, BY: Cheryl E. Barker Thomas L. Barker
 CHERYL E. BARKER THOMAS L. BARKER
 STATE OF WYOMING }
 SHERIDAN COUNTY } ss. Janice O. Cowger Jeffrey L. Cowger
 JANICE O. COWGER JEFFREY L. COWGER

THE FOREGOING INSTRUMENT WAS ACKNOWLEDGED BEFORE ME BY CHERYL E. BARKER, THOMAS L. BARKER, JANICE O. COWGER, AND JEFFREY L. COWGER, THIS 30TH DAY OF AUGUST, 1982. WITNESS MY HAND AND OFFICIAL SEAL.

MY COMMISSION EXPIRES October 23, 1983 Caroline Hamilton
 NOTARY PUBLIC

PLANNING COMMISSION CERTIFICATE

APPROVED BY THE SHERIDAN COUNTY COMMISSION THIS 9 DAY OF Sept, 1982
 ATTEST: Ralph Water Walter J. Pilch
 CHAIRMAN

COUNTY COMMISSIONER'S CERTIFICATE

CERTIFICATE OF APPROVAL BY THE BOARD OF COUNTY COMMISSIONERS OF SHERIDAN COUNTY AS FOLLOWS:
 PLAT APPROVED AND SUBDIVISION PERMIT ISSUED BY THE BOARD OF COUNTY COMMISSIONERS OF SHERIDAN COUNTY THIS 28th DAY OF Sept, 1982.

ATTEST: Margaret Lewis W.B. Frish
 CLERK OF THE BOARD ACTING CHAIRMAN

CERTIFICATE OF COUNTY CLERK AND RECORDER

CERTIFICATE FOR RECORDING BY THE COUNTY CLERK AND RECORDER AS FOLLOWS:

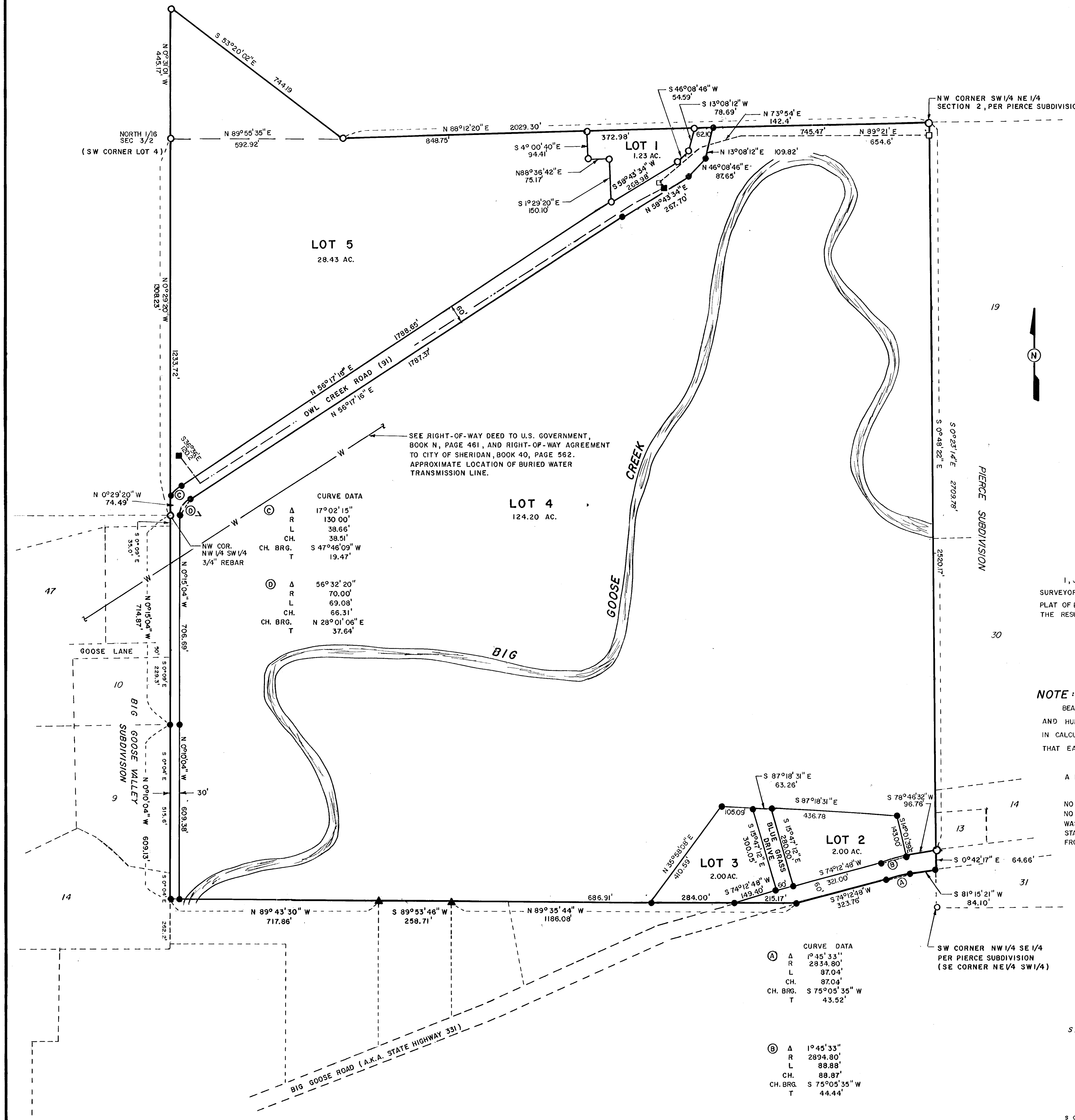
STATE OF WYOMING }
 COUNTY OF SHERIDAN } ss.
 I HEREBY CERTIFY THAT THIS PLAT WAS FILED FOR RECORD IN MY OFFICE AT 3:15 P.m. O'CLOCK THIS 27th DAY OF October, 1982, AND RECORDED IN PLAT BOOK NUMBER 1 ON PAGE 333
NO. 853793 Margaret Lewis
 COUNTY CLERK

BLUE GRASS MEADOWS SUBDIVISION

OWNER
 GREEN CARPET SOD COMPANY
 (A CO-PARTNERSHIP)
 SHERIDAN, WYOMING

CENTENNIAL ENGINEERING & RESEARCH, INC. SHERIDAN, WYOMING

DATE: 8/26/82 DRAWN BY: J.B. REV. 9/9/82



SCALE: 1" = 200'

LOCATION MAP
 T55N, R85W
 SCALE: 1" = 2000'

CERTIFICATE OF SURVEYOR

I, JEROME MARK, A DULY REGISTERED PROFESSIONAL ENGINEER AND SURVEYOR IN THE STATE OF WYOMING, DO HEREBY CERTIFY THAT THIS PLAT OF BLUE GRASS MEADOWS SUBDIVISION TRULY AND CORRECTLY REPRESENTS THE RESULTS OF A SURVEY MADE BY ME OR UNDER MY DIRECT SUPERVISION.

Jerome M. Mark
 JEROME M. MARK WYO. P.E. & L.S. NO. 551

NOTE:

BEARINGS AND DISTANCES ARE STATED TO THE NEAREST SECOND AND HUNDRETH IN ORDER TO ASSURE CONSISTENCY AND ACCURACY IN CALCULATION AND FIELD STAKING AND IS NOT MEANT TO IMPLY THAT EACH POINT IS SET TO THE NEAREST SECOND AND HUNDRETH.

A PORTION OF LOT 4 IS WITHIN THE 100 YEAR FLOOD PLAIN.

NO PUBLIC MAINTENANCE OF STREETS OR ROADS.
 NO PROPOSED PUBLIC SEWAGE DISPOSAL SYSTEM.
 WASTEWATER FACILITIES SHALL COMPLY WITH STATE AND COUNTY REQUIREMENTS. OBTAIN PERMIT FROM THE OFFICE OF THE ENGINEER.

LEGEND

- SET 5/8" REBAR WITH STAMPED ALUMINUM CAP
- FOUND 5/8" REBAR
- ▲ 1" PIPE (FOUND)
- BEARINGS & DISTANCES AS PER CENTENNIAL ENGINEERING & RESEARCH (SOLAR BEARING)
- BEARINGS PER WALTER J. PILCH
- MTN BELL EASEMENT 5' ON EACH SIDE OF E
- MDU EASEMENT 10' ON EACH SIDE OF E
- BEARINGS AND DISTANCES PER BIG GOOSE VALLEY SUBDIVISION PLAT

CURVE DATA
 A 1°45'33"
 R 2834.80'
 L 87.04'
 CH. 87.04'
 CH. BRG. S 75°05'35" W
 T 43.52'

CURVE DATA
 A 1°45'33"
 R 2894.80'
 L 88.88'
 CH. 88.87'
 CH. BRG. S 75°05'35" W
 T 44.44'

Partial Variation 5-28-02 BK 434 P 450

B-28