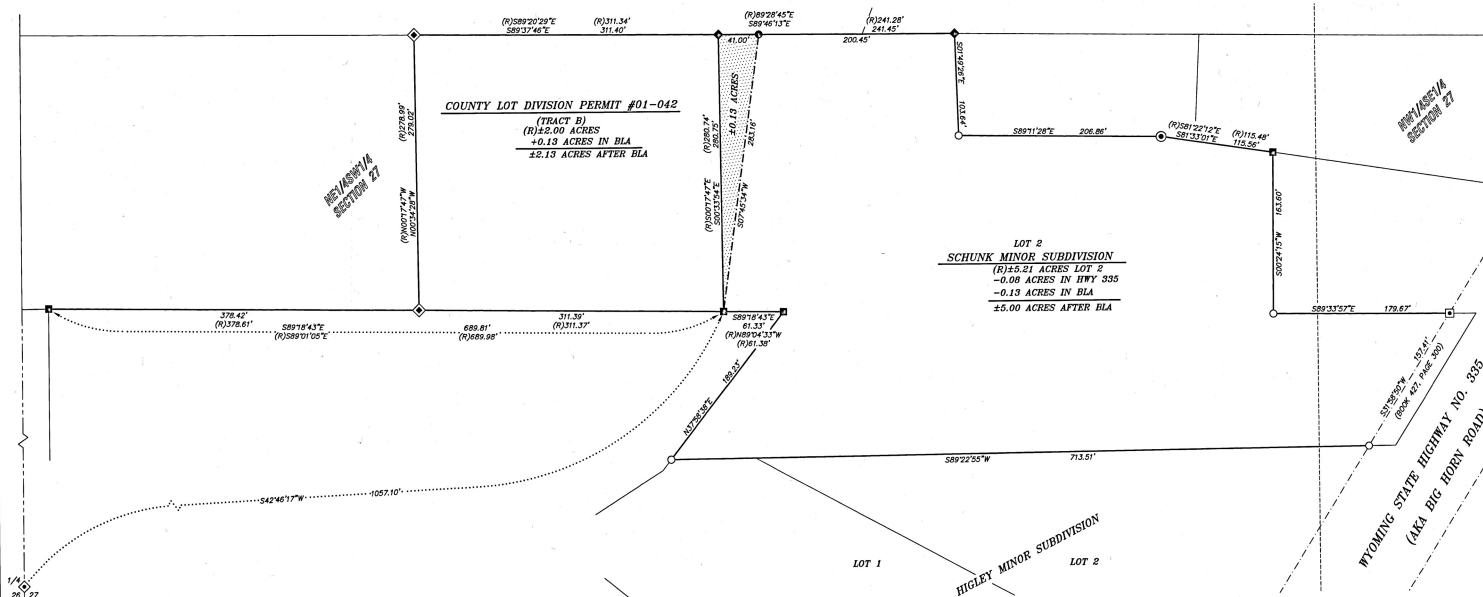


# RECORD OF SURVEY

## BOUNDARY LINE ADJUSTMENT

### OPITZ TRACT

SITUATED IN SCHUNK MINOR SUBDIVISION & NE1/4SW1/4, SECTION 27,  
TOWNSHIP 55 NORTH, RANGE 84 WEST, SHERIDAN COUNTY, WYOMING



#### CURRENT LEGAL DESCRIPTION - OPITZ

A TRACT OF LAND SITUATED IN THE SW1/4SW1/4 OF SECTION 27, TOWNSHIP 55 NORTH, RANGE 84 WEST OF THE 6TH P.M., SHERIDAN COUNTY, WYOMING, BEING MORE PARTICULARLY DESCRIBED AS FOLLOWS:

BEGINNING AT A POINT ON THE NORTH LINE OF A PROPERTY AS DESCRIBED IN SHERIDAN COUNTY BOOK 379 OF DEEDS, PAGE 586, SAID POINT BEING LOCATED 513.57'07\"

#### CURRENT LEGAL DESCRIPTION - HOOVER

LOT 2 OF THE SCHUNK MINOR SUBDIVISION, A SUBDIVISION IN SHERIDAN COUNTY, WYOMING.

LESS AND EXCEPT THAT PORTION OF THE SAID LOT 2 CONVEYED BY WARRANTY DEED TO THE TRANSPORTATION COMMISSION OF WYOMING RECORDED OCTOBER 8, 2001 IN BOOK 427 OF DEEDS, PAGE 300.

#### BOUNDARY LINE ADJUSTMENT LEGAL DESCRIPTION

A PORTION OF LOT 2 OF SCHUNK MINOR SUBDIVISION TO THE SHERIDAN COUNTY, WYOMING, SAID TRACT OF LAND BEING MORE PARTICULARLY DESCRIBED AS FOLLOWS:

BEGINNING AT THE NORTHWEST CORNER OF SAID LOT 2, SCHUNK MINOR SUBDIVISION, THENCE S89°46'13\"

A TRACT OF LAND CONTAINING 0.13 ACRES OF LAND, MORE OR LESS.

#### BLA LEGAL DESCRIPTION - OPITZ

A PORTION OF LAND IN THE NE1/4SW1/4 OF SECTION 27, TOWNSHIP 55 NORTH, RANGE 84 WEST, AND LOT 2 OF SCHUNK MINOR SUBDIVISION TO THE SHERIDAN COUNTY, WYOMING, SAID TRACT OF LAND BEING MORE PARTICULARLY DESCRIBED AS FOLLOWS:

COMMENCING AT WEST QUARTER CORNER OF SAID SECTION 27, THENCE N42°48'17\"

CONTAINING 2.13 ACRES, MORE OR LESS.

#### BLA LEGAL DESCRIPTION - HOOVER

LOT 2 OF THE SCHUNK MINOR SUBDIVISION, A SUBDIVISION IN SHERIDAN COUNTY, WYOMING.

LESS AND EXCEPT THAT PORTION OF SAID LOT 2 CONVEYED BY WARRANTY DEED TO THE TRANSPORTATION COMMISSION OF WYOMING RECORDED OCTOBER 8, 2001 IN BOOK 427 OF DEEDS, PAGE 300.

ALSO,

LESS AND EXCEPT A PORTION OF LOT 2 OF SCHUNK MINOR SUBDIVISION TO SHERIDAN COUNTY, WYOMING, SAID TRACT OF LAND BEING MORE PARTICULARLY DESCRIBED AS FOLLOWS:

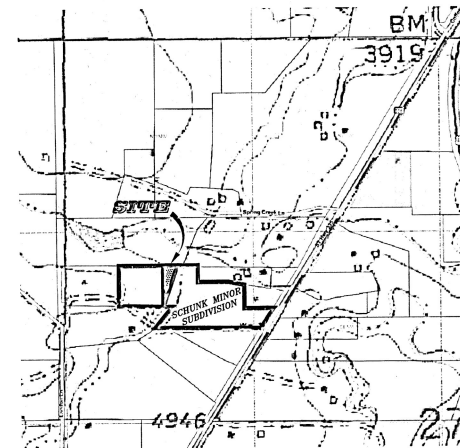
BEGINNING AT THE NORTHWEST CORNER OF SAID LOT 2, SCHUNK MINOR SUBDIVISION, THENCE S89°46'13\"

CONTAINING 0.13 ACRES OF LAND, MORE OR LESS.

NOTICE: This plat is a copy of a transcription of the original as it is located in the public records of the State of Wyoming. It is not a reproduction of the original as it is located in the public records of the State of Wyoming. It is not a reproduction of the original as it is located in the public records of the State of Wyoming.

#### LEGEND:

- 2" ALUMINUM CAP PER PLS 3854
- 1-1/2" ALUMINUM CAP PER PLS 258
- 1-1/2" ALUMINUM CAP PER PLS 529
- 1" PLASTIC CAP PER PLS 5015
- SET 2" ALUMINUM CAP PER PLS 15848
- 1-1/2" ALUMINUM CAP PER PLS 6812
- 3-1/4" ALUMINUM CAP PER PLS 6812
- FOUND 5/8" REBAR
- CALCULATED: NOTHING FOUND/NOTHING SET
- RECORD
- PROPERTY LINE
- BOUNDARY ADJUSTMENT LINE
- SECTION LINE
- INTERIOR SECTION LINE
- BOUNDARY LINE ADJUSTMENT (±0.13 ACRES TOTAL)
- HOOVER TO OPITZ



LOCATION MAP:

NOT TRUE SCALE

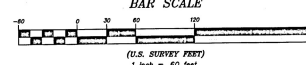


SCALE: 1" = 60'

BEARINGS ARE BASED ON THE WYOMING COORDINATE SYSTEM, EAST CENTRAL ZONE

DISTANCES ARE SURFACE

BAR SCALE



DATUM:

NAD 83(1983), NAD 83 (U.S. SURVEY FEET)  
DATUM ADJUSTMENT FACTOR (DAF): 1.00246811  
DIVERGE SURFACE COORDINATES BY DAF TO CALCULATE THE WYOMING COORDINATE SYSTEM NAD 1983, EAST CENTRAL ZONE, COORDINATES

#### CERTIFICATE OF RECORDER

STATE OF WYOMING : 88  
COUNTY OF SHERIDAN

THIS PLAT WAS FILED FOR RECORD IN THE OFFICE OF THE CLERK AND RECORDER AT 4:30 O'CLOCK P.M.  
THIS 20 DAY OF April, 2024, AND IS DULY RECORDED IN DRAWER A, PLAT NO. 730  
FEE \$ 50.00

*Kimberly Heinich, deputy*  
COUNTY CLERK

STAMP RECEIVING NUMBER 8024-791126



#### SURVEYOR'S CERTIFICATE

STATE OF WYOMING : 88  
COUNTY OF SHERIDAN

I, ALUMINUM & SUBSTANTIAL, A DULY REGISTERED LAND SURVEYOR IN THE STATE OF WYOMING, DO HEREBY CERTIFY THAT THIS PLAT REPRESENTS THE RESULTS OF A SURVEY MADE BY ME OR UNDER MY DIRECT SUPERVISION.



"PLAT IS VALID ONLY IF PRINT HAS ORIGINAL SIGNATURE OF SURVEYOR DATED AND SIGNED"

# RECORD OF SURVEY

## BOUNDARY LINE ADJUSTMENT

### OPITZ TRACT

SITUATED IN SCHUNK MINOR SUBDIVISION & NE1/4SW1/4, SECTION 27,  
TOWNSHIP 55 NORTH, RANGE 84 WEST, SHERIDAN COUNTY, WYOMING



CLIENT: EMIL & DIANA OPITZ  
PO BOX 827  
BIG HORN, WY 82833-0827

555 W. BURKITT ST.  
SHERIDAN, WY 82801

AC 2024-008  
DN 2024-008  
March 26, 2024

\* 730