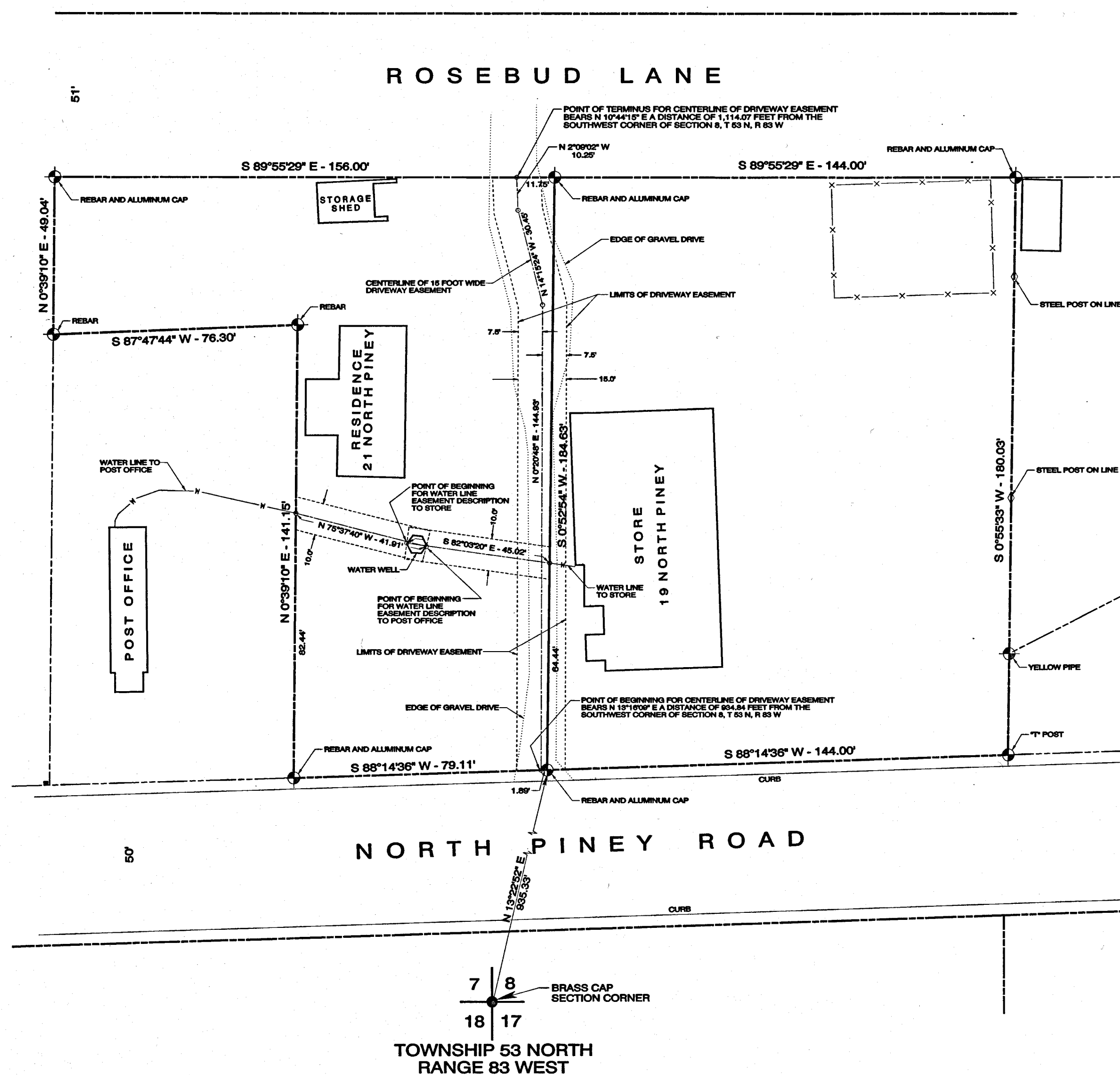


SCALE : 1" = 30'.

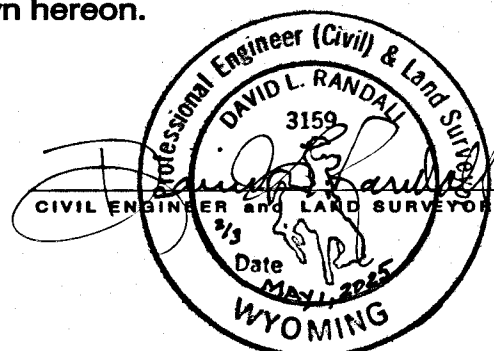


State of Wyoming } ss
County of Sheridan }

I, David L. Randall, of Sheridan, Wyoming being a duly registered Professional Engineer and Land Surveyor in the State of Wyoming do hereby certify that this map was made from field notes of actual surveys performed by me or under my direct supervision in June of 1991 and in August of 2023 and from records on file in the Sheridan County Clerk's Office, Sheridan, Wyoming.

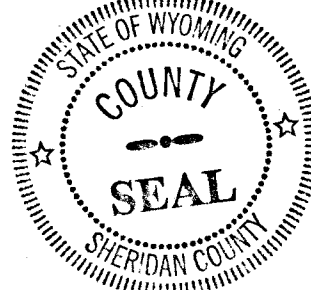
This map correctly represents all of the data shown hereon.

Registration No. 3159 PE & LS



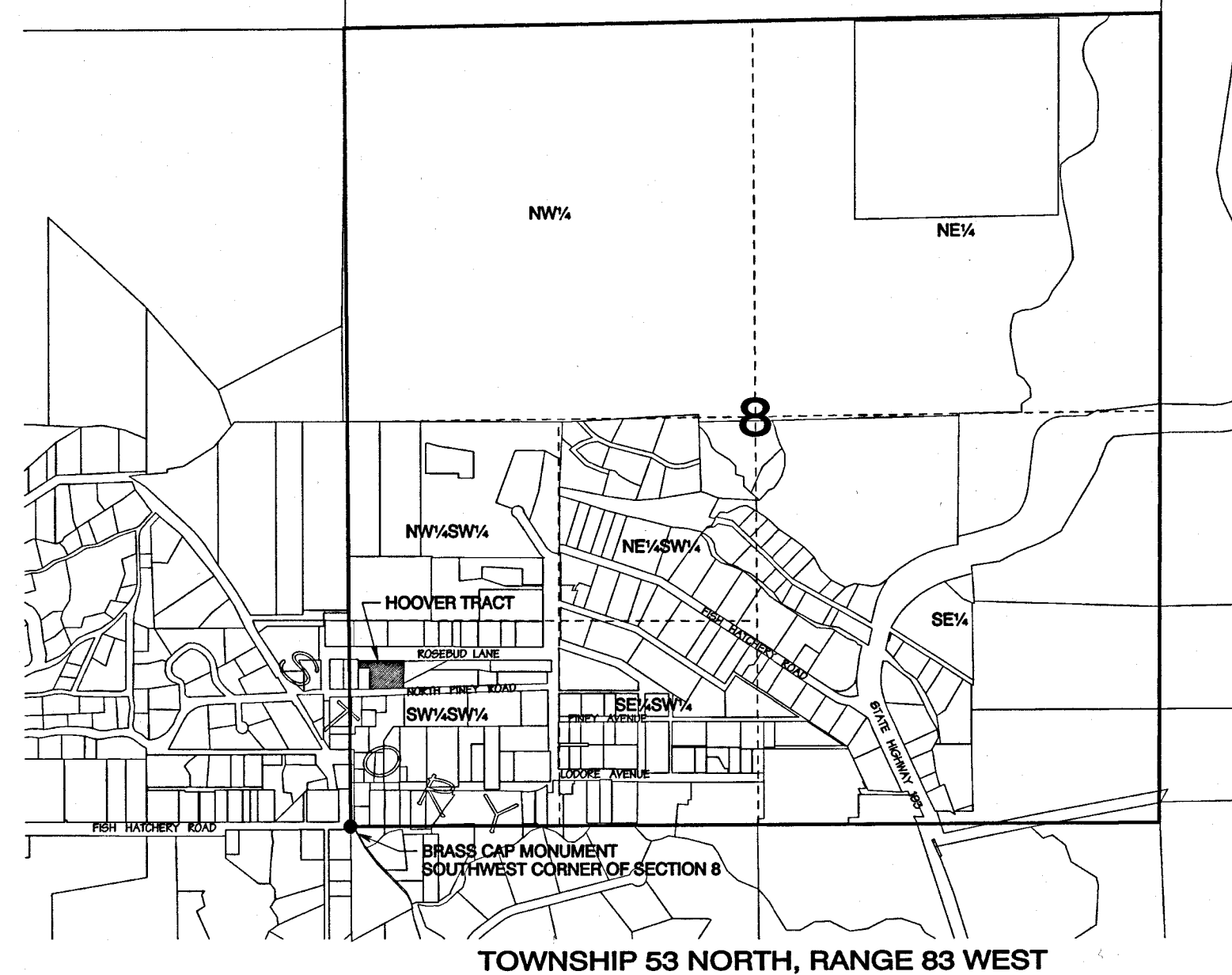
State of Wyoming } ss
County of Sheridan }

This plat was filed for record in the Office of the Clerk and Recorder at 1:38 O'Clock P M., this 1 day of May, 2023, and is duly recorded in Book A, Page No. 783 2025
Receiving Number 2025-798814



Eda Schunk Thompson
COUNTY CLERK

SCALE = 1" = 1000'



NOTICE:
This plat is an image or reproduction of the original as is recorded in the
Sheridan County Clerk's Office. It is not a certified, complete or
authoritative depiction of current property lines, easements or rights-of-
way. Dimensions, measurement or representations may have occurred
since the original plat was recorded.



showing

EXISTING FEATURES and PROPOSED EASEMENTS
situated on

PROPERTIES ADDRESSED AS 19 and 21 NORTH PINEY ROAD
situated in the

SW ¼ SW ¼ of SECTION 8
TOWNSHIP 53 NORTH, RANGE 83 WEST
of the
SIXTH PRINCIPAL MERIDIAN,
SHERIDAN COUNTY, WYOMING

for
PATRICIA L. HOOVER

P.O. BOX 13
STORY, WYOMING 82842

DRAWN BY DAVE RANDALL - AUGUST 15, 2023
RANDALL ENGINEERING SURVEYS - SHERIDAN, WYOMING