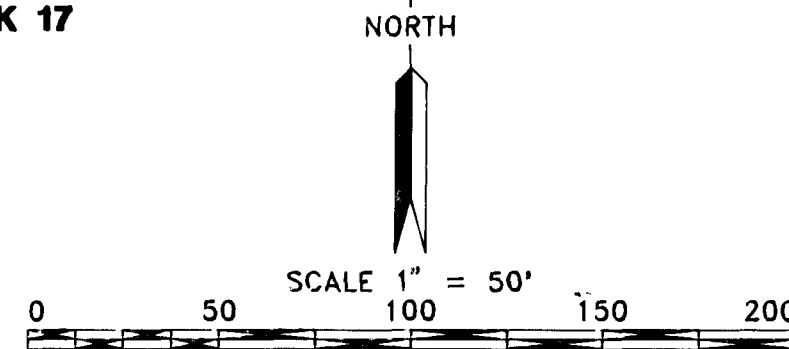


# FISHPOND MINOR ADDITION TO THE CITY OF SHERIDAN SHERIDAN COUNTY, WYOMING A REPLAT OF LOTS 9, 10, 11 AND 12, BLOCK 17 DANA ADDITION



## APPROVALS

APPROVED BY THE CITY ENGINEER OF SHERIDAN, WYOMING  
THIS 21 DAY OF July, 1995  
*Edith Johnson-Lameres*  
EDITH JOHNSON-LAMERES

APPROVED BY THE MAYOR AND CITY CLERK IN THE CITY OF  
SHERIDAN, WYOMING THIS 22 DAY OF November, 1995  
ATTEST:  
*Cathy W. Ellis* *Della Herbst*  
CITY CLERK MAYOR

## CERTIFICATE OF RECORD

STATE OF WYOMING }  
COUNTY OF SHERIDAN } SS

I HEREBY CERTIFY THAT THIS PLAT WAS FILED FOR RECORD  
IN MY OFFICE AT 1:00 O'CLOCK P.M. ON THE 6  
DAY OF Dec, 1995 AND RECORDED IN DRAWER E  
PLAT # 14

NO. 214658  
FEE 50.00

*Paul D. Wiley*  
COUNTY CLERK

## CERTIFICATE OF SURVEY

I WILLIAM E PUGH, A DULY REGISTERED LAND SURVEYOR  
IN THE STATE OF WYOMING, DO HEREBY CERTIFY THAT THIS  
PLAT OF LOTS 9, 10, 11, 12, 13, 14, & 15 OF DANA ADDITION  
TO THE CITY OF SHERIDAN, SHERIDAN COUNTY, WYOMING TRULY  
AND CORRECTLY REPRESENTS THE RESULTS OF A SURVEY  
MADE BY ME OR UNDER MY SUPERVISION DURING FEB. 1994

*William E. Pugh*  
WILLIAM E. PUGH RLS 5300  
Date 12/1/95  
WYOMING

## CERTIFICATE OF APPROVAL

THE SHERIDAN PLANNING COMMISSION HEREWITH RECOMMENDS  
THE APPROVAL OF THE FOREGOING PLAT THIS 5th DAY OF  
December, 1995.  
*Arnold E. Madly* *Robert W. Brown*  
CHAIRMAN SECRETARY

THE FOREGOING PLAT IS HEREBY APPROVED FOR FILING BY THE  
UNDERSIGNED MAYOR AND CITY CLERK IN AND FOR THE CITY OF  
SHERIDAN, COUNTY OF SHERIDAN, STATE OF WYOMING, ON THIS  
22 DAY OF November, 1995.  
*Della Herbst* *Cathy W. Ellis*  
MAYOR SECRETARY

## CERTIFICATE OF DEDICATION

THE ABOVE SUBDIVISION OF LOTS 9, 10, 11, AND 12  
OF DANA ADDITION TO THE CITY OF SHERIDAN,  
SHERIDAN COUNTY, WYOMING AS APPEARS ON THIS PLAT, IS WITH FREE  
CONSENT, AND IN ACCORDANCE WITH THE DESIRES OF THE  
UNDERSIGNED OWNERS AND PROPRIETORS, CONTAINING 0.351  
ACRES MORE OR LESS; HAVE BY THESE PRESENTS LAID OUT;  
AND SURVEYED AS A RESUBDIVISION OF LOTS 9, 10, 11, 12 OF  
BLOCK 17 OF DANA ADDITION TO THE CITY OF SHERIDAN,  
AND DO HEREBY DEDICATE AND CONVEY TO AND FOR PUBLIC USE  
FOREVER HEREAFTER THE STREETS AS LAID OUT AND DESIGNATED  
ON THIS PLAT; AND ALSO RESERVE PERPETUAL EASEMENTS  
FOR THE INSTALLATION AND MAINTENANCE OF UTILITIES AND  
FOR IRRIGATION AND DRAINAGE FACILITIES AS LAID OUT AND  
DESIGNATED ON THIS PLAT HEREBY RELEASING AND WAIVING  
ALL HOMESTEAD RIGHTS.  
EXECUTED THIS 22 DAY OF Nov, 1995

(city owns original plat lot 12)

*Cathy W. Ellis* *Della Herbst*  
CITY CLERK MAYOR  
CITY OF SHERIDAN  
STATE OF WYOMING }  
COUNTY OF WYOMING } SS

THE FOREGOING INSTRUMENT WAS ACKNOWLEDGED BEFORE ME  
THIS 22 DAY OF Nov, 1995,  
BY *Della Herbst* WITNESS MY HAND AND  
OFFICIAL SEAL.

MY COMMISSION EXPIRES 10-17-98

*William E. Pugh*  
NOTARY PUBLIC

## OWNERS

lot 1 (original plat lot 9)

*Lynn T. Olson-Russell*  
LYNN T. OLSON RUSSELL

STATE OF WYOMING }  
COUNTY OF WYOMING } SS

THE FOREGOING INSTRUMENT WAS ACKNOWLEDGED BEFORE ME  
THIS 21 DAY OF July, 1995,  
BY *Lynn T. Olson-Russell* WITNESS MY HAND AND  
OFFICIAL SEAL.



lot 10 (original plat lots 10 and 11)

*Laura D. Purcell*  
LAURA D. PURCELL Pres. Purcell Land Co. LP

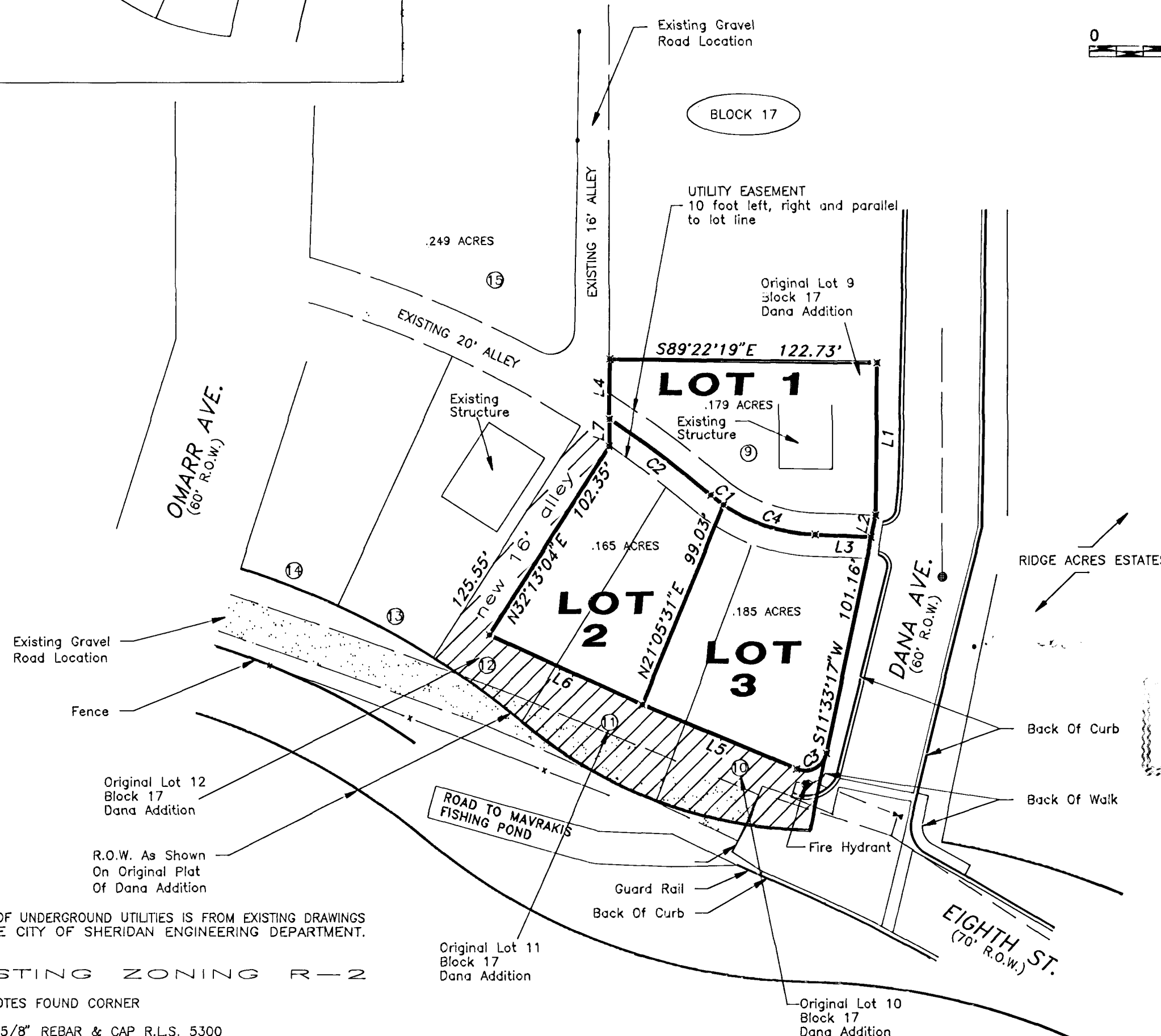
STATE OF WYOMING }  
COUNTY OF WYOMING } SS

THE FOREGOING INSTRUMENT WAS ACKNOWLEDGED BEFORE ME  
THIS 26 DAY OF June, 1995,  
BY *Laura D. Purcell* WITNESS MY HAND AND  
OFFICIAL SEAL.

MY COMMISSION EXPIRES



*Randy M. Hawley*  
NOTARY PUBLIC



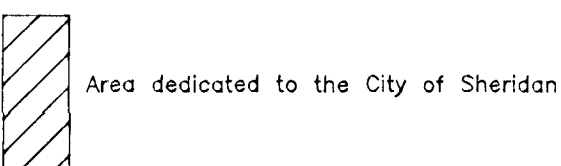
## NOTE:

LOCATION OF UNDERGROUND UTILITIES IS FROM EXISTING DRAWINGS  
FROM THE CITY OF SHERIDAN ENGINEERING DEPARTMENT.

## EXISTING ZONING R-2

- DENOTES FOUND CORNER
- ✕ SET 5/8" REBAR & CAP R.L.S. 5300
- ⑬ ORIGINAL LOT NUMBERS

Basis of Bearing:  
Wyoming State plane coordinates  
East Central Zone (1.00025 factor)



LINE TABLE									
#	BEARING	DISTANCE	CURVE TABLE						
L1	S00°19'49"W	69.74'	#	RADIUS	DELTA	LENGTH	CH.BEARING	DISTANCE	TANGENT
L2	S11°26'16"W	10.28'	C1	76.79'	05°28'27"	7.34'	N52°53'32"W	7.44'	
L3	N87°26'57"W	25.52'	C2	512.22'	06°32'16"	58.45'	N53°28'49"W	58.42'	29.26'
L4	N00°33'26"E	27.48'	C3	10.02'	100°34'49"	17.59'	S61°52'55"W	15.40'	12.06'
L5	N67°44'57"W	76.87'	C4	76.79'	33°32'13"	44.95'	S72°27'16"E	44.31'	23.14'
L6	N65°33'14"W	77.12'							
L7	N00°25'06"E	12.44'							
L8	S52°53'32"E	7.33'							

DRAWN BY:  
S.E.H.  
CHECKED BY:  
W.E.P.

RANGE:  
SECTION:

TOWNSHIP:  
DATE: 27 AUG 1992  
SCALE: 1" = 50'

FISHPOND MINOR  
LOCATED IN  
SHERIDAN COUNTY, WYOMING

CENTENNIAL ENGINEERING & RESEARCH, INC.  
237 North Main st. Sheridan, Wyoming 82801

SHEET  
ONE  
OF  
ONE  
94003-A