



1. SEE CORNER RECORDATIONS IN THE COUNTY CLERK'S OFFICE AT THE SHERIDAN COUNTY COURTHOUSE.
2. SEE RECORD OF SURVEY FILED IN SHERIDAN COUNTY COURTHOUSE DRAWER "A" PLAT NO. 339.

SET 2" ALUMINUM CAP PER PLS 2615  
FOUND 3-1/4" ALUMINUM CAP PER PLS 2615  
FOUND 3-1/4" ALUMINUM CAP PER PLS 2615  
FOUND 1-1/2" ALUMINUM CAP PER PLS 6594  
FOUND 1-1/2" OR 2" ALUMINUM CAP PER PLS 2615  
FOUND 3-1/4" ALUMINUM CAP PER PLS 6594  
CALCULATED: NOTHING FOUND/NOTHING SET  
WITNESS CORNER

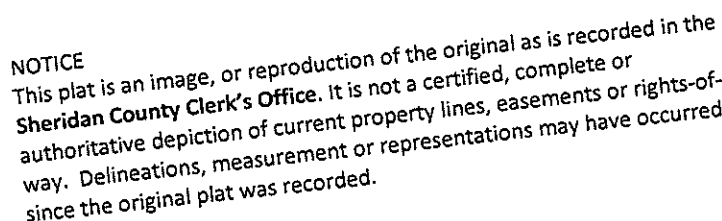
- PROPERTY LINE  
- BOUNDARY ADJUSTMENT LINE  
- SECTION LINE  
- INTERIOR SECTION LINE  
- EASEMENT LINE AS NOTED

- 49.92 ACRE TRACT FROM WYOMONT RANCH TO LAWSON

<b>LINE</b>	<b>BEARING</b>	<b>LENGTH</b>
L1	S89°24'13"E	196.13'
L2	S89°50'48"E	106.55'
L3	N80°29'24"E	54.42'
L4	N60°36'45"E	78.56'
L5	N40°06'58"E	54.85'
L6	N104°57'07"W	155.60'

SAID TRACT CONTAINS 126.40 ACRES OF LAND, MORE OR LESS.

"PLAT IS VALID ONLY IF PRINT HAS  
ORIGINAL SIGNATURE OF SURVEYOR SIGNED AND DATED



STAMP RECEIVING NUMBER 2017-735399

6TH P.M., SHERIDAN COUNTY, WYOMING

JN: 2017-010  
DF: 2017-010-RS-LDD  
MAY 15, 2017