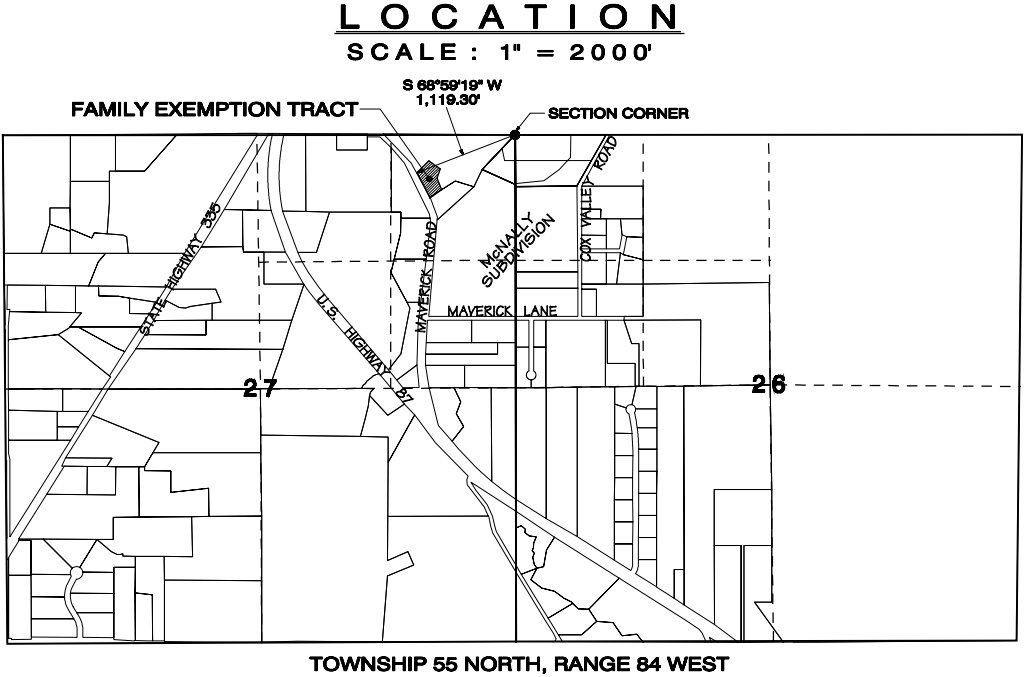
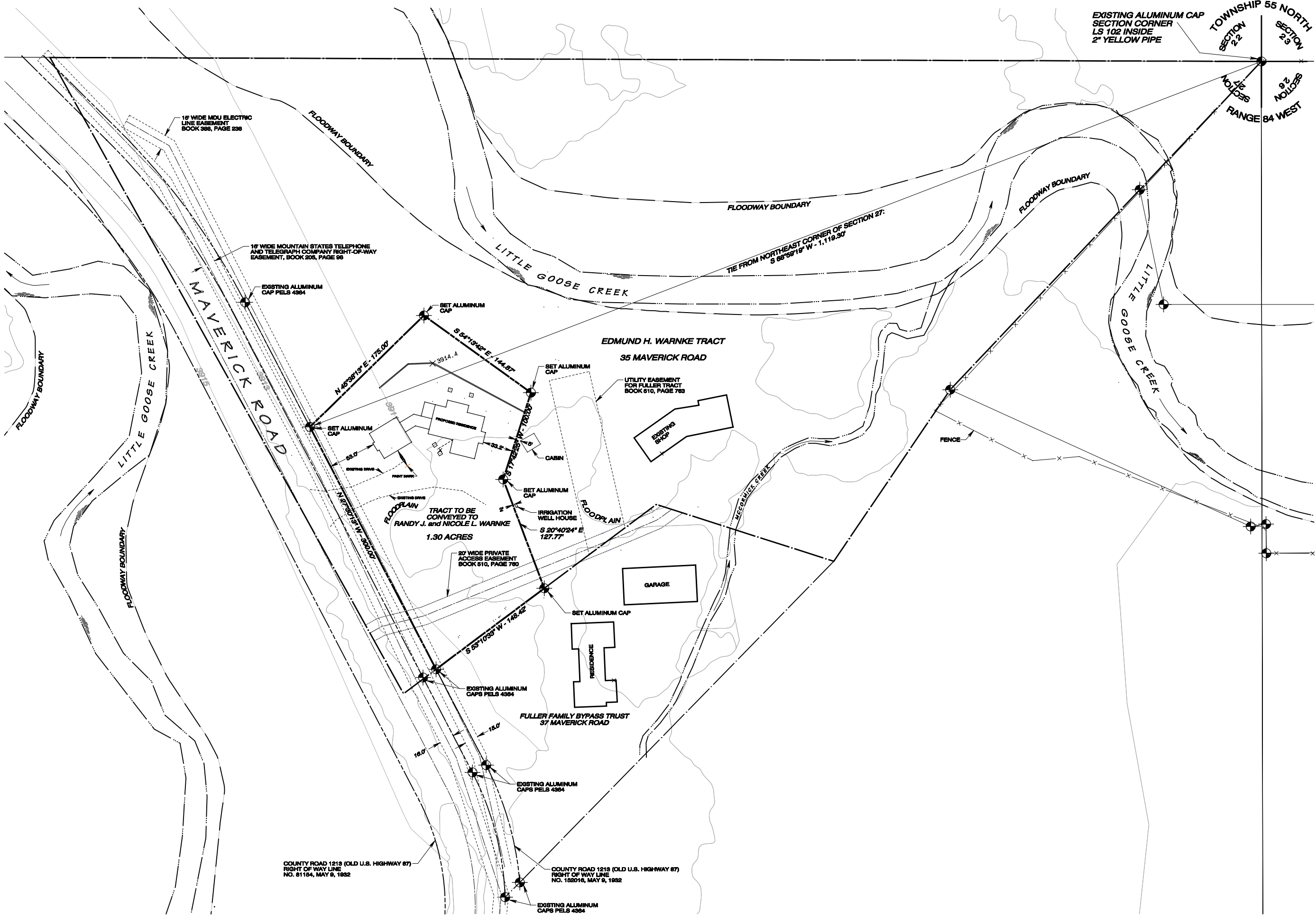


DETAIL

SCALE : 1" = 100'



CERTIFICATE of SURVEYOR

State of Wyoming } ss  
County of Sheridan }  
I, David L. Randall, of Sheridan, Wyoming being a duly registered Professional Engineer and Land Surveyor in the State of Wyoming do hereby certify that this map was made from field notes of an actual survey performed by me or under my direct supervision in January of 2023 and from records on file in the Sheridan County Clerk's Office, Sheridan, Wyoming. This map correctly represents all of the data shown hereon.

Registration No. 3159 PE & LS

CIVIL ENGINEER and LAND SURVEYOR

MAP

showing  
A TRACT OF LAND  
being a  
FAMILY EXEMPTION TRACT  
situated in  
NE 1/4 NE 1/4 of SECTION 27  
TOWNSHIP 55 NORTH, RANGE 84 WEST  
of the  
SIXTH PRINCIPAL MERIDIAN  
SHERIDAN COUNTY, WYOMING

for  
RANDY J. and NICOLE L. WARNKE

33 MAVERICK ROAD  
SHERIDAN, WY 82801