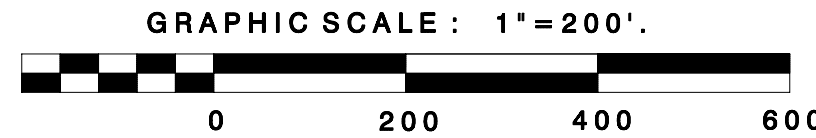
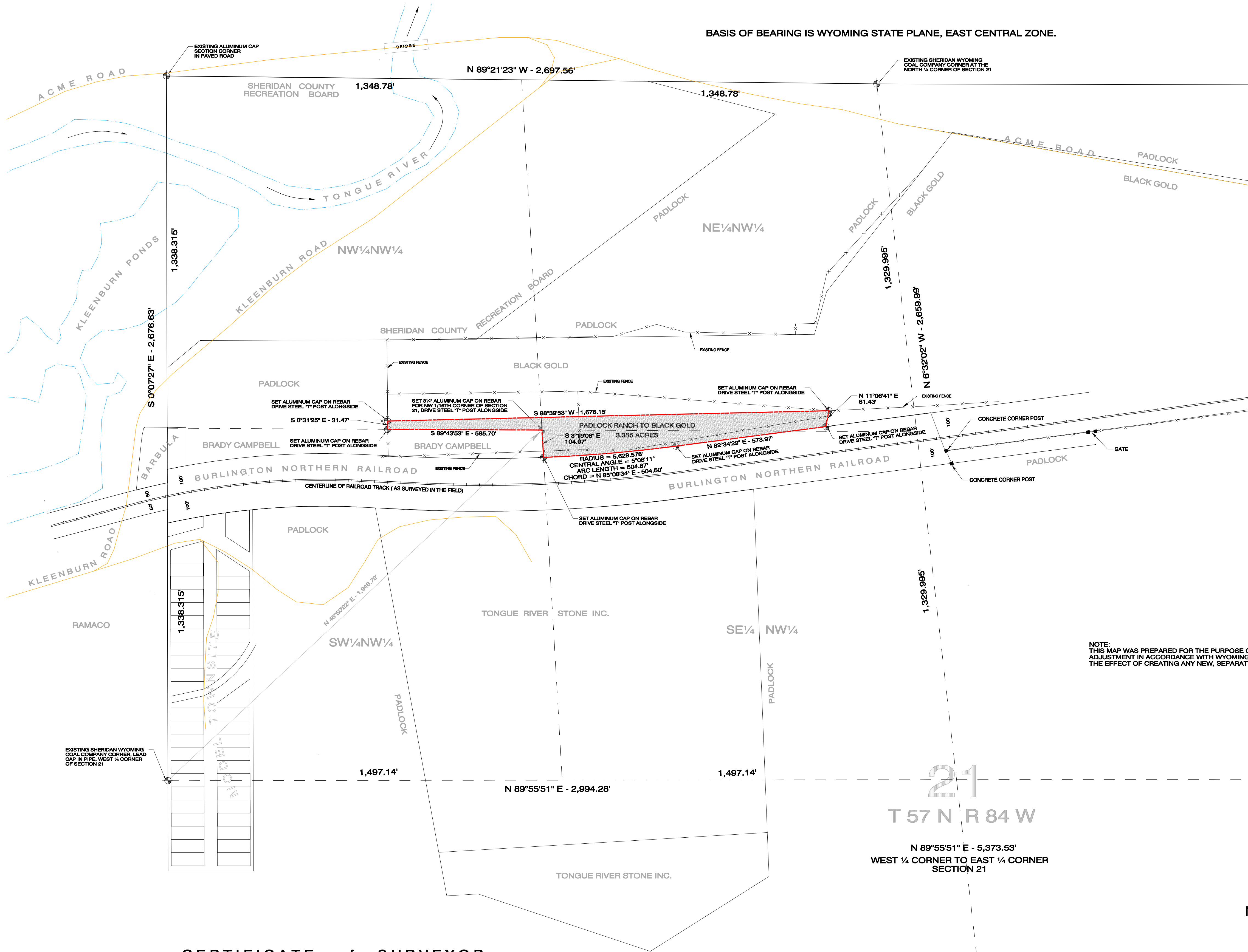


DETAIL



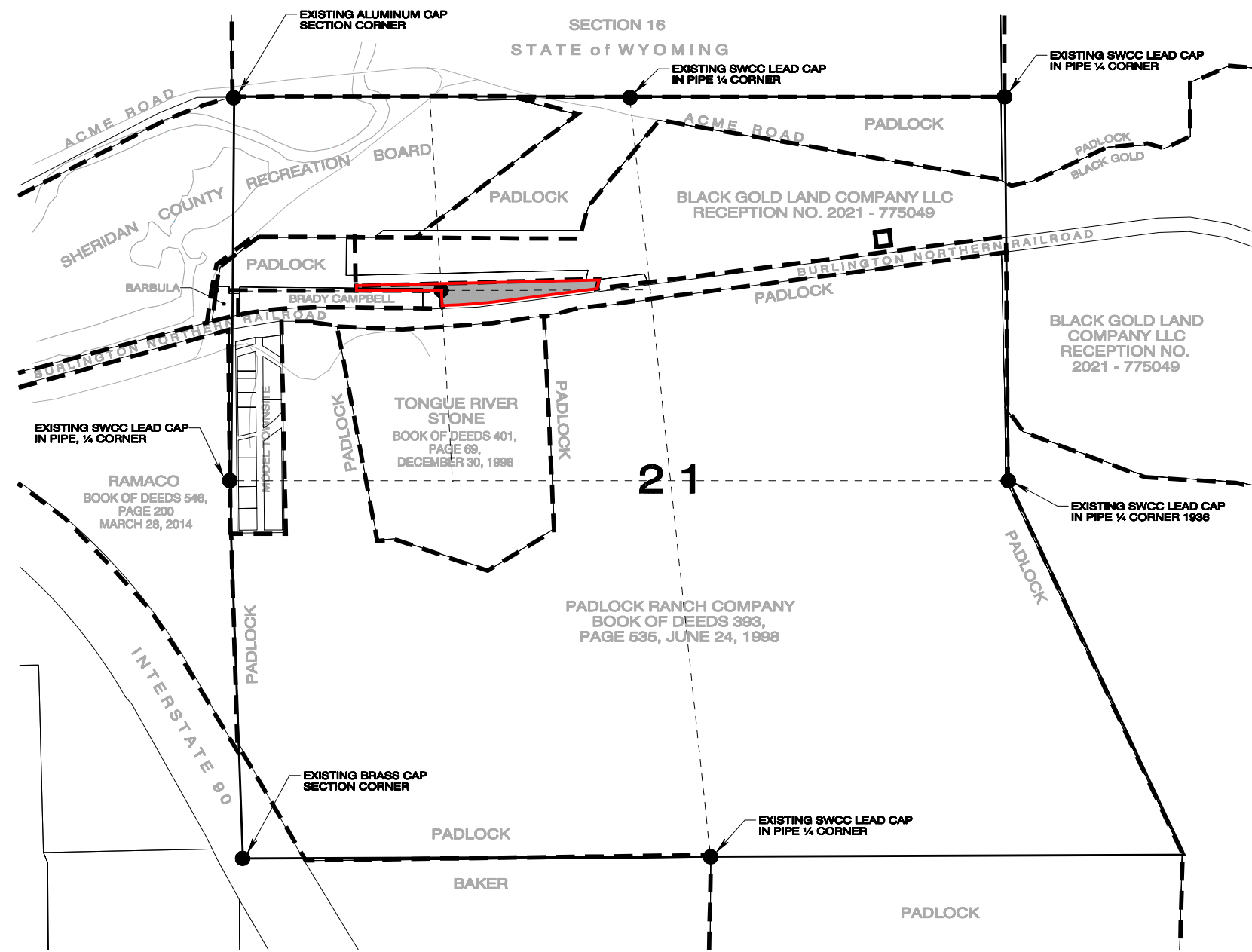
BASIS OF BEARING IS WYOMING STATE PLANE, EAST CENTRAL ZONE.



NOTE:
THIS MAP WAS PREPARED FOR THE PURPOSE OF COMPLETING A BOUNDARY LINE
ADJUSTMENT IN ACCORDANCE WITH WYOMING LAW, AND WHICH DOES NOT HAVE
THE EFFECT OF CREATING ANY NEW, SEPARATELY OWNED PARCEL.

LOCATION

SCALE: 1" = 1000'.



TOWNSHIP 57 NORTH, RANGE 84 WEST

N



MAP

showing

SURVEY of a TRACT of LAND

situated in the

NE 1/4 NW 1/4, NW 1/4 NW 1/4 and the SE 1/4 NW 1/4 of SECTION 21
TOWNSHIP 57 NORTH, RANGE 84 WEST

of the

SIXTH PRINCIPAL MERIDIAN
SHERIDAN COUNTY, WYOMING

for

PADLOCK RANCH COMPANY

8420 U.S. HIGHWAY 14
RANCHESTER, WYOMING 82839-8504

CERTIFICATE of SURVEYOR

State of Wyoming } ss
County of Sheridan }

I, David L. Randall, of Sheridan, Wyoming being a duly registered Professional
Engineer and Land Surveyor in the State of Wyoming do hereby certify that this map
was made from field notes of an actual survey performed by me in October through
December of 2023 and from records on file in the Sheridan County Clerk's Office in
Sheridan, Wyoming. This map correctly represents all of the data shown hereon.

Registration No. 3159 PE & LS

CIVIL ENGINEER and LAND SURVEYOR

CERTIFICATE of RECORDER

State of Wyoming } ss
County of Sheridan }

I hereby certify that this plat was filed for record in the Office of the Clerk
and Recorder at _____ O'Clock _____ M., this _____ day of _____, 2024,
and is duly recorded and filed in Drawer _____, Page No. _____.
Receiving Number _____.

COUNTY CLERK