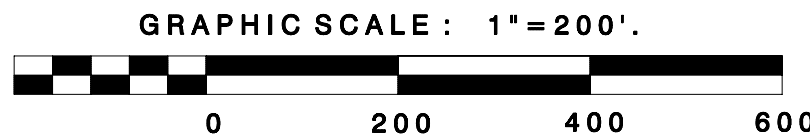
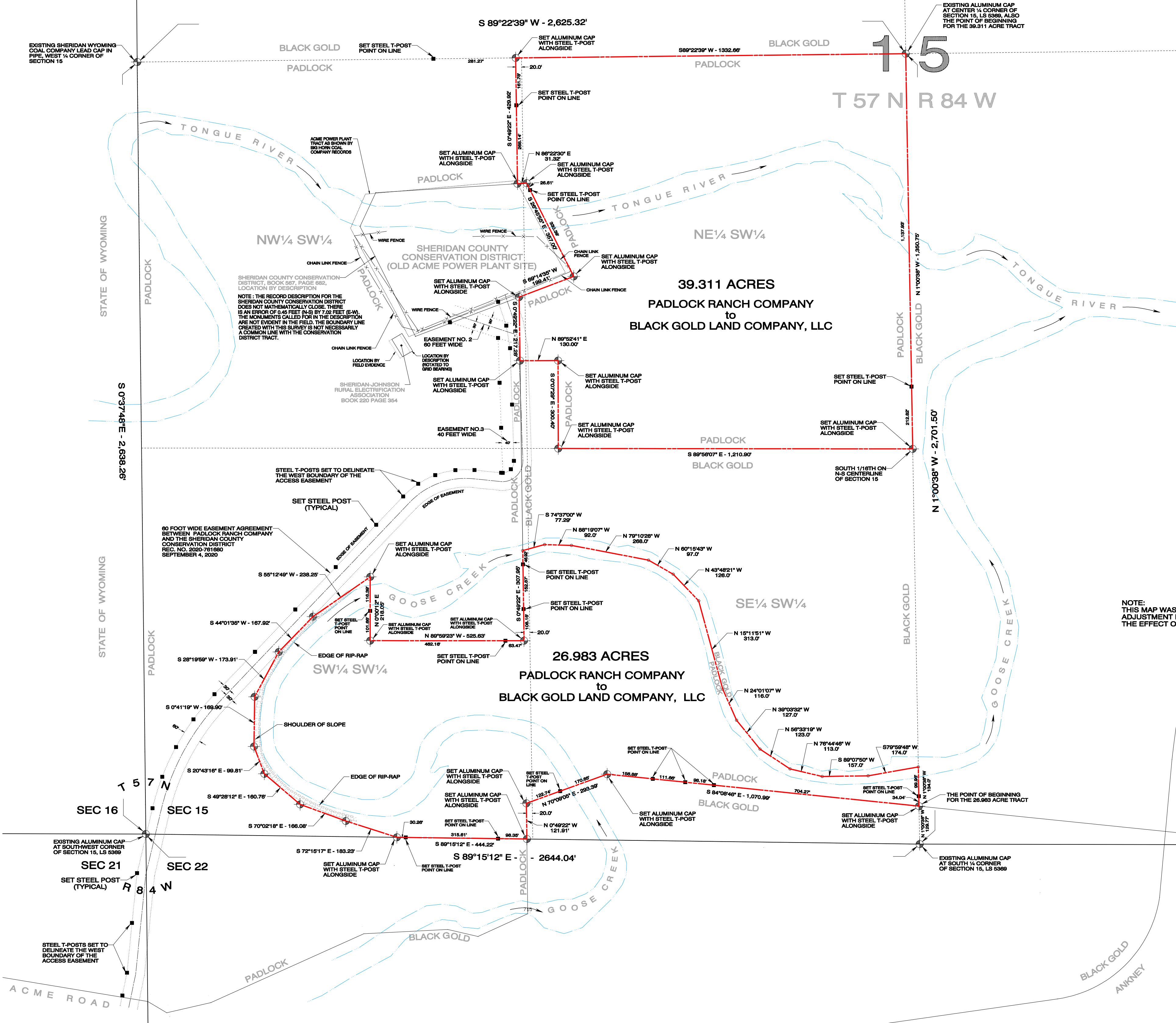


DETAIL



BASIS OF BEARING IS WYOMING STATE PLANE, EAST CENTRAL ZONE.



CERTIFICATE of SURVEYOR

State of Wyoming } ss
County of Sheridan }

I, David L. Randall, of Sheridan, Wyoming being a duly registered Professional Engineer and Land Surveyor in the State of Wyoming do hereby certify that this map was made from field notes of an actual survey performed by me in August through December of 2023, from records on file in the Sheridan County Clerk's Office in Sheridan, Wyoming and from current (2023) aerial photographs. This map correctly represents all of the data shown hereon.

Registration No. 3159 PE & LS

CIVIL ENGINEER and LAND SURVEYOR

CERTIFICATE of RECORDER

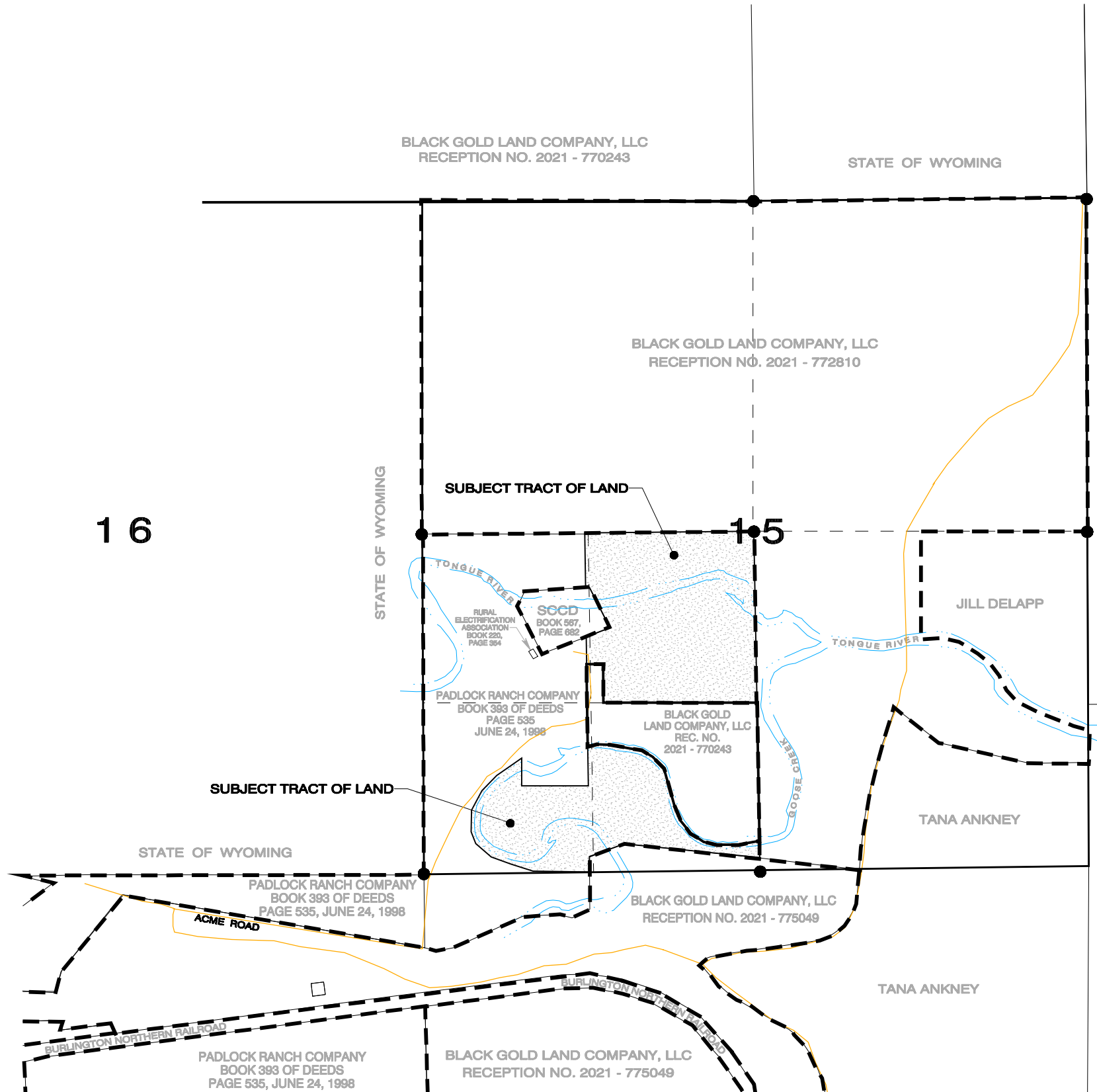
State of Wyoming } ss
County of Sheridan }

I hereby certify that this plat was filed for record in the Office of the Clerk and Recorder at _____ O'Clock _____ M., this _____ day of _____, 2024, and is duly recorded and filed in Drawer _____, Page No. _____.
Receiving Number _____.

COUNTY CLERK

LOCATION

SCALE: 1" = 1000'



TOWNSHIP 57 NORTH RANGE 84 WEST

N



MAP

showing
SURVEY of TRACTS of LAND
situated in the
SW 1/4 of SECTION 15
TOWNSHIP 57 NORTH, RANGE 84 WEST
of the
SIXTH PRINCIPAL MERIDIAN
SHERIDAN COUNTY, WYOMING
for
PADLOCK RANCH COMPANY
8420 U.S. HIGHWAY 14
RANCHESTER, WYOMING 82839-8504