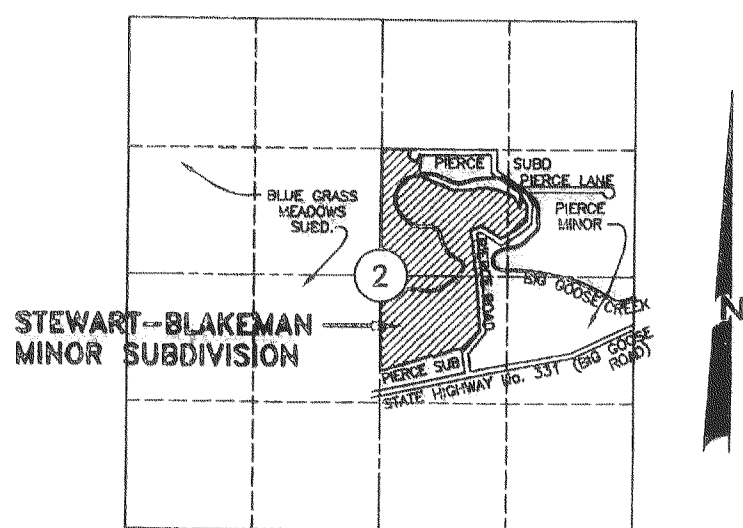


CORRECTED PLAT OF STEWART-BLAKEMAN MINOR SUBDIVISION

BEING A REPLAT OF TRACT 19 AND A PORTION OF TRACT 30 OF THE PIERCE SUBDIVISION
LOCATED IN THE NW1/4SE1/4 AND THE S1/2NE1/4 OF SECTION 2
T 55 N, R 85 W, OF THE 6TH P.M.
SHERIDAN COUNTY, WYOMING

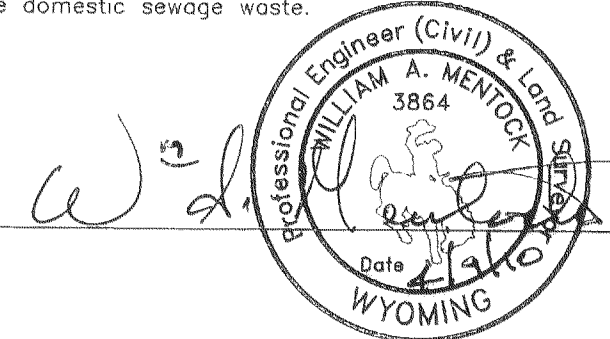


LOCATION MAP
1" = 2000'

SCALE: 1" = 100'

CERTIFICATE OF ENGINEER

I, William A. Mentock, a registered Professional Engineer in the State of Wyoming, hereby certify that private sewage disposal systems can be designed in accordance with the Sheridan County Regulations for a Permit to Construct, Install, or Modify Small Wastewater Facilities Resolution dated December, 1984, for each lot in the Stewart-Blakeman Minor Subdivision, and that the private sewage disposal systems designed and constructed in accordance with said Resolution will adequately and safely dispose of the domestic sewage waste.



NOTES:

ALL NEW CONSTRUCTION, REMODELING, ADDITIONS, OR REPAIRS TO ANY PUBLIC OR PRIVATE BUILDINGS WITHIN THE SUBDIVISION SHALL BE CONSTRUCTED IN ACCORDANCE WITH THE CURRENT BUILDING STANDARDS OF THE NEAREST INCORPORATED CITY OR TOWN OF THE COUNTY THAT HAS ADOPTED BUILDING STANDARDS, BUILDING STANDARDS THAT HAVE BEEN ADOPTED BY THE COUNTY SHALL SUPERSEDE AND GOVERN.

NO PROPOSED PUBLIC SEWAGE DISPOSAL SYSTEM

NO PROPOSED PUBLIC MAINTENANCE OF STREETS OR ROADS

TOTAL SUBDIVISION ACREAGE = 47.78 ACRES
TOTAL NUMBER OF LOTS = 5

ANY PURCHASER DOES NOT HAVE THE RIGHT TO THE NATURAL FLOW OF ANY STREAM WITHIN, OR ADJACENT TO THE SUBDIVISION; SINCE WYOMING WATER ADMINISTRATION LAWS DO NOT RECOGNIZE ANY RIPARIAN RIGHTS WITH REGARD TO NATURAL FLOW FOR PERSONS LIVING ON THE BANK OF ANY STREAM OR RIVER.

BASIS OF BEARING IS THE WEST LINE OF LOT 19 OF PIERCE SUBDIVISION BEARING N 0°23'14"W AS SHOWN ON THE PIERCE SUBDIVISION PLAT

ALL BEARINGS AND DISTANCES SHOWN ON THIS PLAT HAVE BEEN MEASURED IN THE FIELD UNLESS INDICATED OTHERWISE (e.g. REC - RECORDED DATA)

LOT OWNERS WITHIN THIS SUBDIVISION ARE SUBJECT TO MONETARY ASSESSMENTS FOR ROAD MAINTENANCE ON PIERCE ROAD AS PER PIERCE SUBDIVISION REQUIREMENTS.

BEARINGS AND DISTANCES SHOWN IN PARENTHESES REFER TO DIMENSIONS OF EASEMENT LINES (OR EASEMENT CENTERLINE AS SHOWN)

LEGEND

- FOUND REBAR - ACCEPTED AS PROPERTY CORNER;
SET 2" ALUMINUM CAP ON REBAR - PE & LS 3864;
CONCRETE PLACED AROUND REBAR
- SET 5/8" d. REBAR (24" LENGTH);
SET 2" ALUMINUM CAP ON REBAR - PE & LS 3864;
CONCRETE PLACED AROUND REBAR
- SET 5/8" d. REBAR (24" LENGTH);
SET 2" ALUMINUM CAP ON REBAR - PE & LS 3864
- SET 5/8" d. REBAR (24" LENGTH);
SET 1-1/2" ALUMINUM CAP ON REBAR - PE & LS 3864
- NOTHING FOUND - NOTHING SET
(CORNER IN CREEK)
- ▲ FOUND REBAR - ACCEPTED AS PROPERTY CORNER;
SET 2-1/2" ALUMINUM CAP ON REBAR - PE & LS 3864;
CONCRETE PLACED AROUND REBAR
- △ REFERENCE MONUMENT - SET 5/8" REBAR (24" LENGTH);
SET 2-1/2" ALUMINUM CAP ON REBAR - PE & LS 3864
(REFERENCE DATA SHOWN ON THIS PLAT)
- SET 5/8" d. REBAR (24" LENGTH);
SET 1-1/2" ALUMINUM CAP ON REBAR - PE & LS 3864;
CONCRETE PLACED AROUND REBAR
- △ FOUND REBAR - ACCEPTED AS PROPERTY CORNER;
SET 2" ALUMINUM CAP ON REBAR - PE & LS 3864
- FOUND REBAR - ACCEPTED AS PROPERTY CORNER;
SET 1-1/2" ALUMINUM CAP ON REBAR - PE & LS 3864
- STEWART-BLAKEMAN BOUNDARY LINE (w/ DIMENSION)
- SUBDIVISION INTERIOR LOT LINE (w/ DIMENSION)
- ADJOINING PROPERTY LINE
- APPROXIMATE FLOOD HAZARD BOUNDARY
- APPROXIMATE LOCATION - BIG GOOSE CREEK

CERTIFICATE OF CORRECTION STEWART - BLAKEMAN MINOR SUBDIVISION

STATE OF WYOMING }
COUNTY OF SHERIDAN } ss

I, WILLIAM A. MENTOCK, A REGISTERED PROFESSIONAL ENGINEER AND LAND SURVEYOR IN THE STATE OF WYOMING, REGISTRATION NUMBER 3864, DO HEREBY CERTIFY THAT I HAVE RE-EXAMINED THE PLAT OF STEWART-BLAKEMAN MINOR SUBDIVISION, AS PLATTED AND RECORDED BY WARREN TERRY STEWART, CAROL JEAN STEWART, ROBERT A. BLAKEMAN AND EDITH J. BLAKEMAN, THE OWNERS AND SUBDIVIDERS OF THE LAND INCLUDED IN SAID SUBDIVISION, WHICH WAS FILED FOR RECORD IN THE OFFICE OF THE SHERIDAN COUNTY CLERK, SHERIDAN COUNTY, WYOMING, ON AUGUST 28, 1984, AS INSTRUMENT NO. 177448 ON PAGE 80 OF PLAT BOOK S, A SUBDIVISION OF TRACT 19 AND A PORTION OF TRACT 30 OF THE PIERCE SUBDIVISION AS RECORDED IN THE OFFICE OF THE SHERIDAN COUNTY CLERK, SHERIDAN COUNTY, WYOMING ON SEPTEMBER 16, 1977 AS INSTRUMENT NO. 718272 AND RECORDED IN PLAT BOOK 1, PAGE 185, SAID STEWART-BLAKEMAN MINOR SUBDIVISION BEING A PORTION OF NW1/4SE1/4 AND THE S1/2NE1/4 OF SECTION 2, TOWNSHIP 55 NORTH, RANGE 85 WEST OF THE 6TH P.M., ALL IN SHERIDAN COUNTY, WYOMING AND THAT I FIND AND DETERMINE THAT THERE WERE ERRORS TO THE PLAT OF STEWART-BLAKEMAN MINOR SUBDIVISION AND THAT THIS PLAT INCLUDES THE FOLLOWING CORRECTIONS TO SAID PLAT:

- MEASURED BEARINGS AND DISTANCES HAVE BEEN DETERMINED FOR ALL OF THE BOUNDARY COURSES AND THE COURSES COMMON TO LOTS 2 AND 3 AND ARE SHOWN ON THIS PLAT.
- THE BASIS OF BEARING FOR THE PLAT SHOULD BE THE WESTERLY LINE OF LOT 19 OF PIERCE SUBDIVISION. THE BEARING AND DISTANCE OF THE COURSE COMMON TO LOTS 3 AND 4 HAS BEEN CORRECTED AS SHOWN ON THIS PLAT.
- THE BEARINGS AND DISTANCES OF THE COURSES COMMON TO LOTS 2 AND 5 HAVE BEEN CORRECTED AS SHOWN ON THIS PLAT.
- THE TOTAL SUBDIVISION ACREAGE HAS BEEN CORRECTED TO READ 47.78 ACRES AS SHOWN ON THIS PLAT.
- THE AREA OF LOT 2 HAS BEEN CORRECTED TO READ 15.50 ACRES AS SHOWN ON THIS PLAT.
- THE AREA OF LOT 3 HAS BEEN CORRECTED TO READ 12.54 ACRES AS SHOWN ON THIS PLAT.
- THE AREA OF LOT 4 HAS BEEN CORRECTED TO READ 1.87 ACRES AS SHOWN ON THIS PLAT.
- THE AREA OF LOT 5 HAS BEEN CORRECTED TO READ 15.87 ACRES AS SHOWN ON THIS PLAT.
- THE BEARING AND DISTANCE OF THE COURSE COMMON TO LOTS 2 AND 4 HAS BEEN CORRECTED AS SHOWN ON THIS PLAT.
- THE BEARING AND DISTANCE OF THE COURSE COMMON TO LOTS 1 AND 2 HAS BEEN CORRECTED AS SHOWN ON THIS PLAT.
- THE DISTANCE OF THE WESTERLY LINE OF LOT 1 HAS BEEN CORRECTED AS SHOWN ON THIS PLAT.
- ALL EASEMENTS OF RECORD AS OF THE DATE SHOWN ON THIS PLAT HAVE BEEN ADDED TO THE PLAT.
- STATE PLANE COORDINATES (NAD 83) FOR THE NW CORNER OF THE SUBDIVISION HAVE BEEN ADDED TO THE PLAT.

WITNESS MY HAND THIS 9th DAY OF APRIL, 2010

WILLIAM A. MENTOCK
WYOMING PE&LS NO. 3864
COUNTY OF SHERIDAN } ss
STATE OF WYOMING }
NOTARY PUBLIC
MY COMMISSION EXPIRES MAY 17, 2011

STATE OF WYOMING }
COUNTY OF SHERIDAN } ss
SUBSCRIBED, SWORN TO AND ACKNOWLEDGED BEFORE ME THIS 9th DAY OF APRIL, 2010 BY WILLIAM A. MENTOCK.
WITNESS MY OFFICIAL HAND AND SEAL.

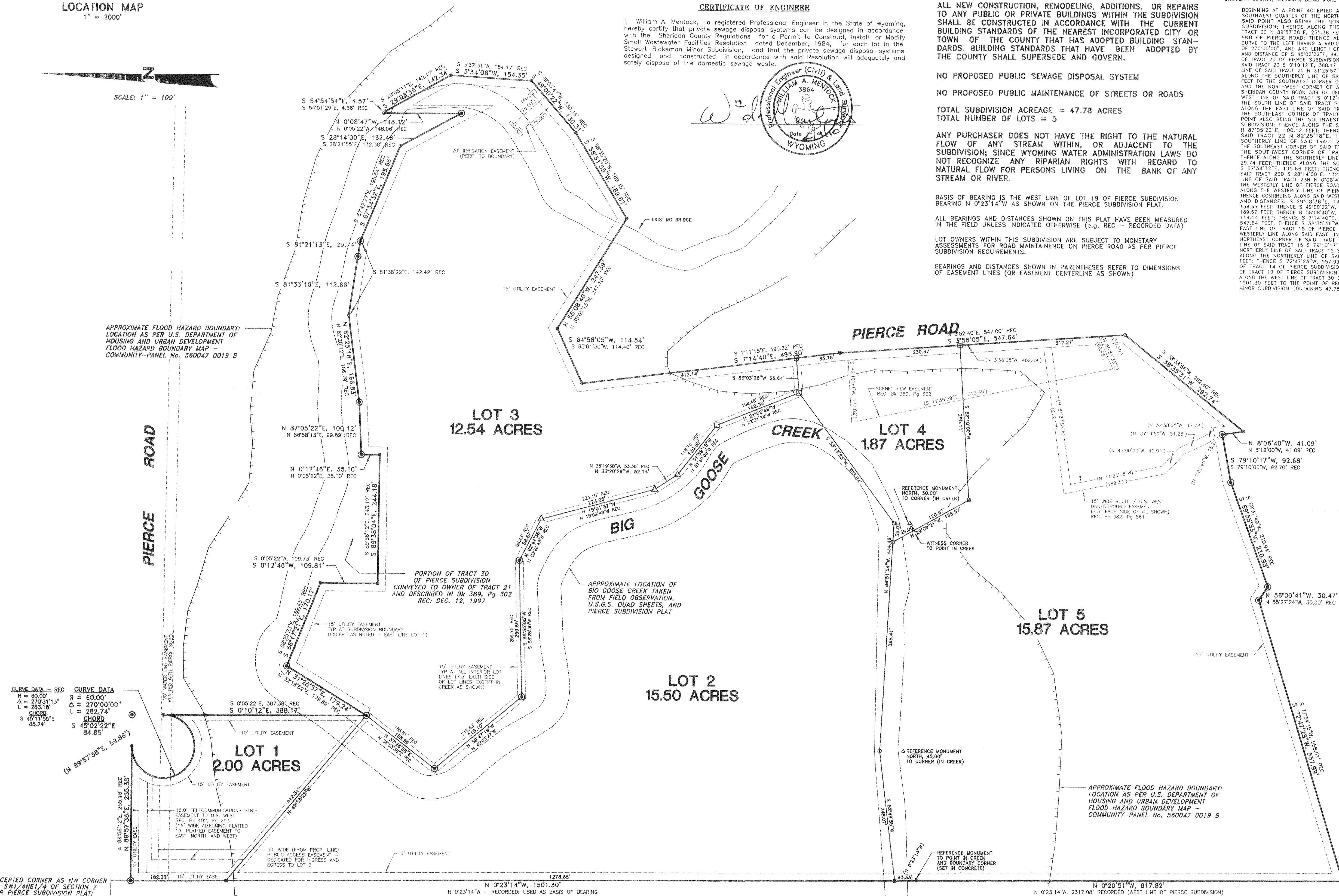
MY COMMISSION EXPIRES MAY 17, 2011

CERTIFICATE OF PLANNING AND ENGINEERING
REVIEWED BY THE SHERIDAN COUNTY DEPARTMENT OF PLANNING AND ENGINEERING THIS DAY OF , 2010.

COUNTY PLANNER COUNTY ENGINEER

CERTIFICATE OF BOARD OF COUNTY COMMISSIONERS
CORRECTIVE PLAT APPROVED BY THE BOARD OF COUNTY COMMISSIONERS OF SHERIDAN COUNTY,
THIS 15th DAY OF JUNE, 2010.

CAROL J. ROYAL
COUNTY CLERK, Deputy
ANNE M. MENTOCK
CHAIRMAN



ACCEPTED CORNER AS NW CORNER OF SW1/4NE1/4 OF SECTION 2 PER PIERCE SUBDIVISION PLAT; WY STATE PLANE COORDINATES - NAD 83 (1993); N: 574725.625 E: 421315.299

MENTOCK-WILLEY CONSULTANTS
CONSULTING ENGINEERS AND LAND SURVEYORS

TAYLOR PLACE, No. 2
1030 NORTH MAIN ST.
SHERIDAN, WY 82801
Phone 307-674-4224
Fax 307-672-9492

JOB No. 94-371

FEBRUARY 24, 2010

94371FNL.dwg

SHEET 1 of 2

-130 1-2