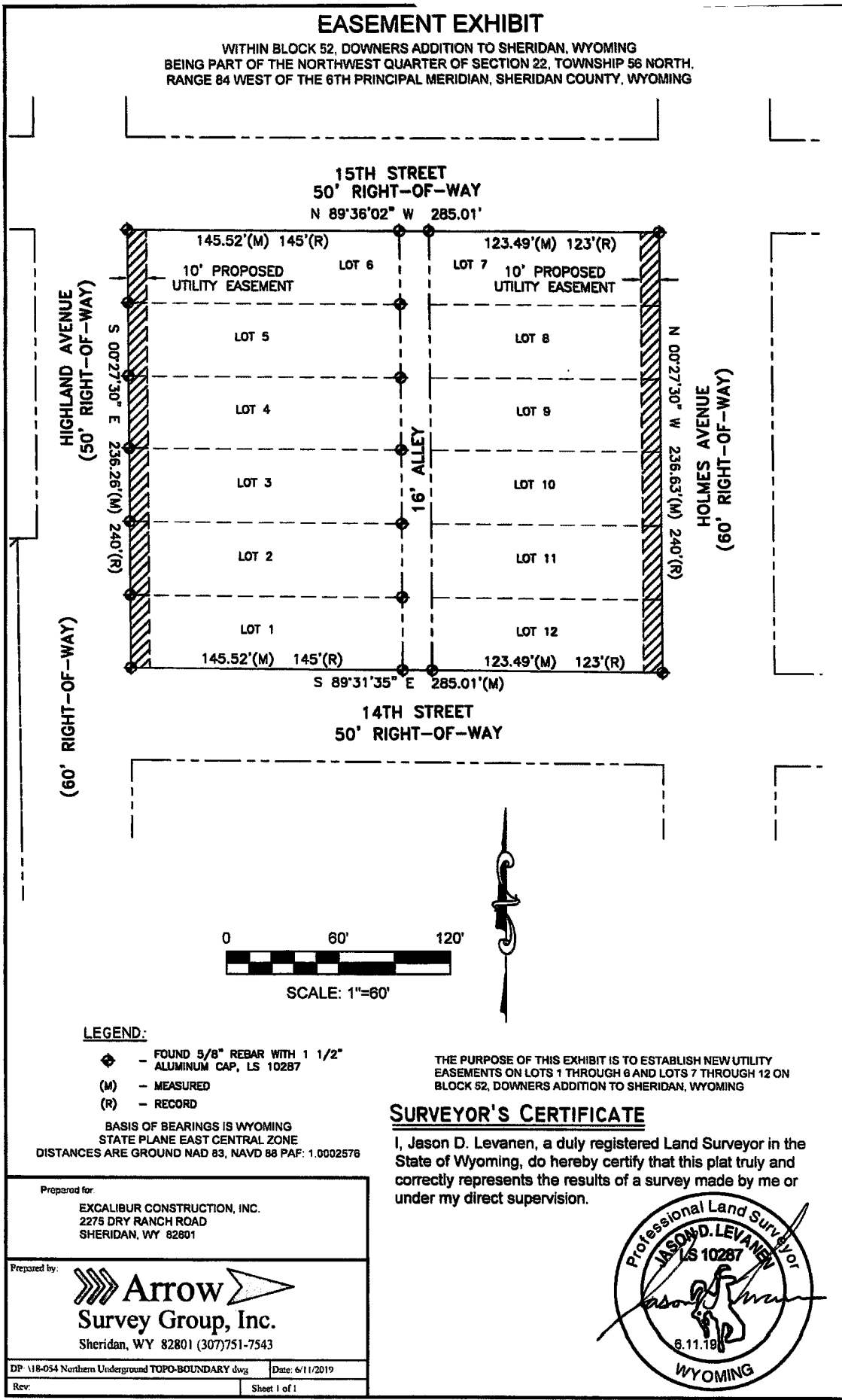




**EASEMENT EXHIBIT**

WITHIN BLOCK 52, DOWNERS ADDITION TO SHERIDAN, WYOMING  
 BEING PART OF THE NORTHWEST QUARTER OF SECTION 22, TOWNSHIP 56 NORTH,  
 RANGE 84 WEST OF THE 6TH PRINCIPAL MERIDIAN, SHERIDAN COUNTY, WYOMING



**LEGEND:**

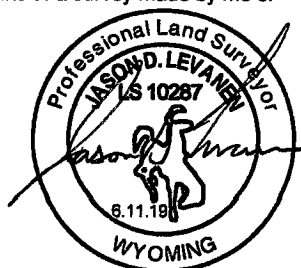
- ◆ - FOUND 5/8" REBAR WITH 1 1/2" ALUMINUM CAP, LS 10287
- (M) - MEASURED
- (R) - RECORD

BASIS OF BEARINGS IS WYOMING STATE PLANE EAST CENTRAL ZONE  
 DISTANCES ARE GROUND NAD 83, NAVD 88 PAF: 1.0002576

THE PURPOSE OF THIS EXHIBIT IS TO ESTABLISH NEW UTILITY EASEMENTS ON LOTS 1 THROUGH 6 AND LOTS 7 THROUGH 12 ON BLOCK 52, DOWNERS ADDITION TO SHERIDAN, WYOMING

**SURVEYOR'S CERTIFICATE**

I, Jason D. Levanen, a duly registered Land Surveyor in the State of Wyoming, do hereby certify that this plat truly and correctly represents the results of a survey made by me or under my direct supervision.



Prepared for:  
 EXCALIBUR CONSTRUCTION, INC.  
 2275 DRY RANCH ROAD  
 SHERIDAN, WY 82801

Prepared by:  
 Arrow Survey Group, Inc.  
 Sheridan, WY 82801 (307)751-7543

DP: V18-054 Northern Underground TOPO-BOUNDARY.dwg Date: 6/11/2019  
 Rev: Sheet 1 of 1

**NO. 2019-751409 EASEMENT**  
 EDA SCHUNK THOMPSON, SHERIDAN COUNTY CLERK  
 MONTANA DAKOTA UTILITIES CO 2324 DRY RANCH RD  
 SHERIDAN WY 82801