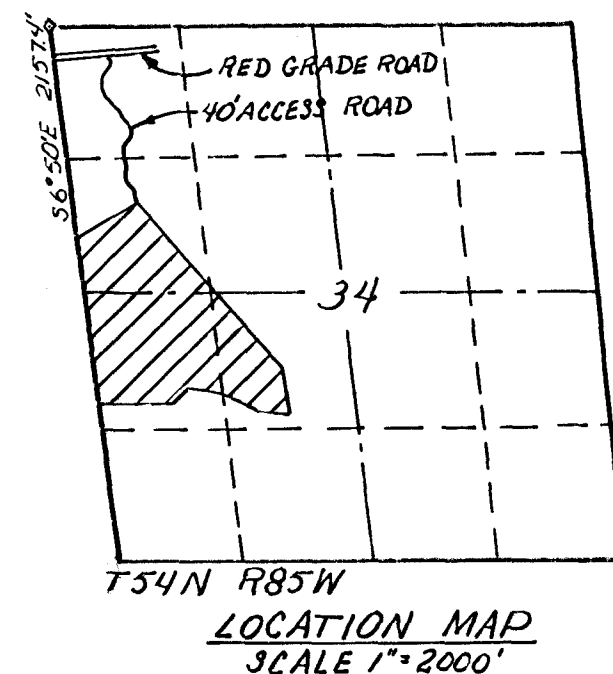


28 27
33 34



CERTIFICATE OF DEDICATION

The above or forgoing subdivision of AMENDED PLAT OF BURGESS SUBDIVISION as appears on this plat, is with the free consent, and in accordance with the desires of the undersigned owners and proprietors; containing 53.27 acres more or less, have by these presents laid out, and surveyed as AMENDED PLAT OF BURGESS SUBDIVISION, and do hereby dedicate and convey to and for public use forever hereafter the streets as are laid out and designated on this plat, witness our hands and seals this 15th day of JULY A.D. 1976.

The undersigned owners and proprietors do hereby release and waive all rights, under and by virtue of the homestead exemption laws of the state of Wyoming.

By John A. Burgess

By James H. Weber

By _____

By Mitzi M. Weber

State of Wyoming)

County of Sheridan)

The foregoing instrument was acknowledged before me by:

John A. Burgess, James H. Weber, Mitzi M. Weber,

this 27 day of August, 1976

Witness my hand and official seal.

Greg Bout - Notary Public
My commission expires 3-26-78

CERTIFICATE OF SURVEYOR

State of Wyoming)

County of Sheridan)

I, Walter J. Pilch, a duly registered land surveyor in the State of Wyoming do hereby certify that this plat of Amended Plat of Burgess Subdivision truly and correctly represents the results of a survey made by me or under my direct supervision.

Wyo. Registration No. 537 Walter J. Pilch
P.E. & L.S.

CERTIFICATE OF APPROVAL

Approved by the Sheridan County Board of County Commissioners this 9th day of August A.D. 1976.

ATTEST:
Margaret Lewis
Clerk of the Board

William J. Loya
Chairman

Approved by the Sheridan County Planning Commission this 15th day of July A.D. 1976.

ATTEST:
John E. McVicker
Clerk of the Planning Comm.

Richard E. Dwyer
Chairman of the Planning Comm.

State of Wyoming)

County of Sheridan)

This instrument was filed for record at 3:55 P.M. o'clock on the 21st day of September A.D. 1976 and duly recorded in book 1 of plats on page 148.

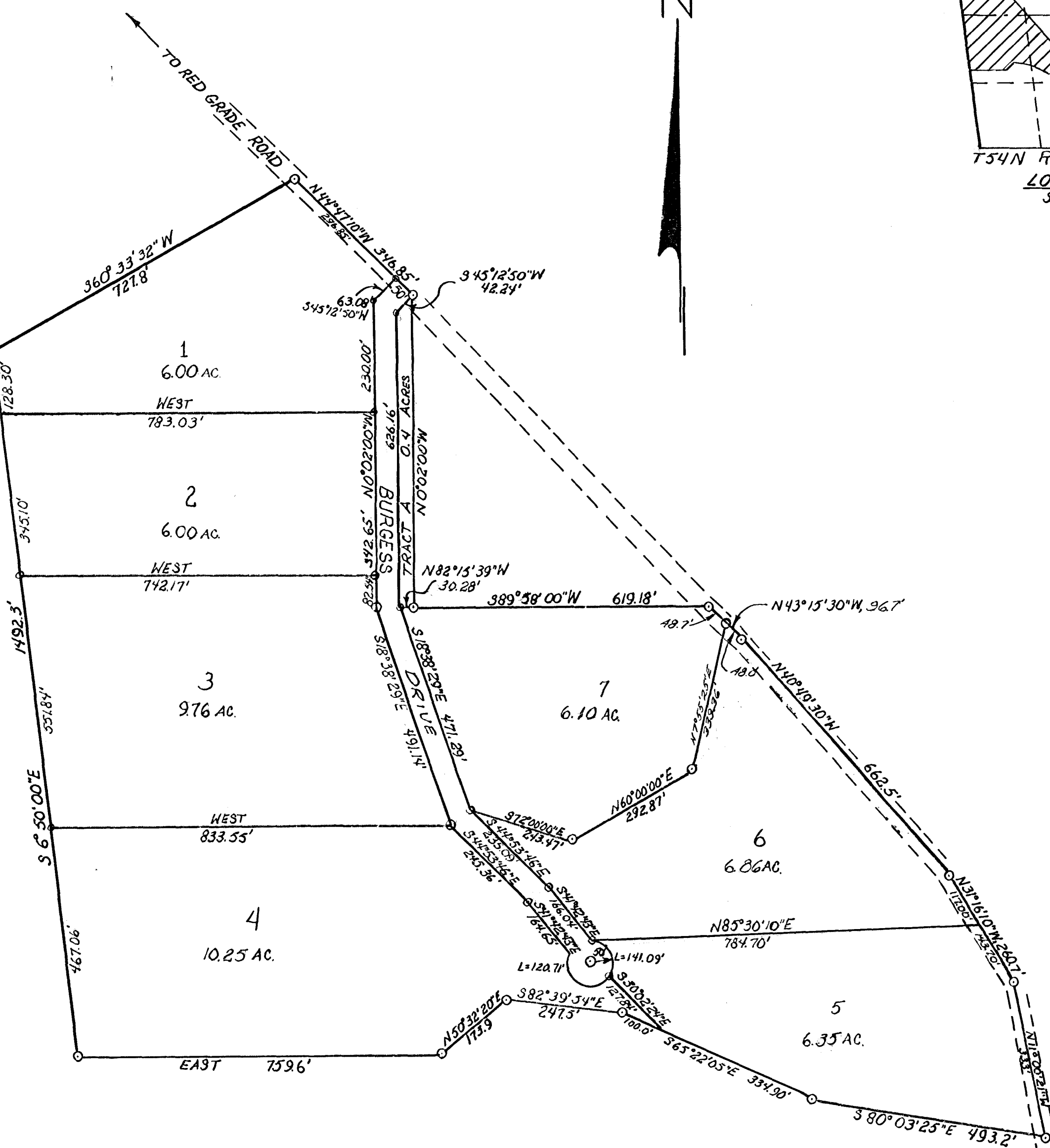
No. 693816 Fee 25.25

Margaret Lewis
County Clerk

Deputy

AMENDED PLAT OF BURGESS SUBDIVISION

SUBDIVIDERS: J.A. BURGESS - BIG HORN, WYOMING
J.H. & M.M. WEBER - SHERIDAN, WYOMING



SCALE 1"=200'

TRACT ACREAGE = 51.38 AC.
ROAD ACREAGE = 1.89 AC.
TOTAL SUBDIV. ACREAGE = ± 53.27 AC.

DESCRIPTION OF SUBDIVISION

A TRACT OF LAND SITUATED IN THE SW $\frac{1}{4}$ NW $\frac{1}{4}$ AND N $\frac{1}{2}$ SW $\frac{1}{4}$ OF SECTION 34, T54N R85W, SHERIDAN COUNTY, WYOMING, DESCRIBED AS FOLLOWS: BEGINNING AT A POINT ON THE WEST LINE OF SAID SECTION 34, SAID POINT BEING LOCATED 36° 50' E, 2151.4' FEET FROM THE NW CORNER OF SAID SECTION 34; THENCE S6° 50' E, 1492.3 FEET; THENCE EAST, 759.6 FEET; THENCE N50° 32' 20" E, 173.9 FEET; THENCE S82° 39' 34" E, 247.5 FEET; THENCE S65° 22' 05" E, 434.9 FEET; THENCE S80° 03' 25" E, 493.2 FEET; THENCE N11° 21' N, 33.3 FEET; THENCE N31° 16' 10" W, 260.7 FEET; THENCE N40° 49' 30" W, 662.5 FEET; THENCE N43° 15' 30" W, 96.7 FEET; THENCE S89° 58' W, 619.18 FEET; THENCE N0° 02' W, 660 FEET; THENCE N44° 47' 10" W, 346.85'; THENCE S60° 33' 32" W, 727.8 FEET TO THE POINT OF BEGINNING SAID SUBDIVISION CONTAINS 53.27 ACRES MORE OR LESS.

8-20