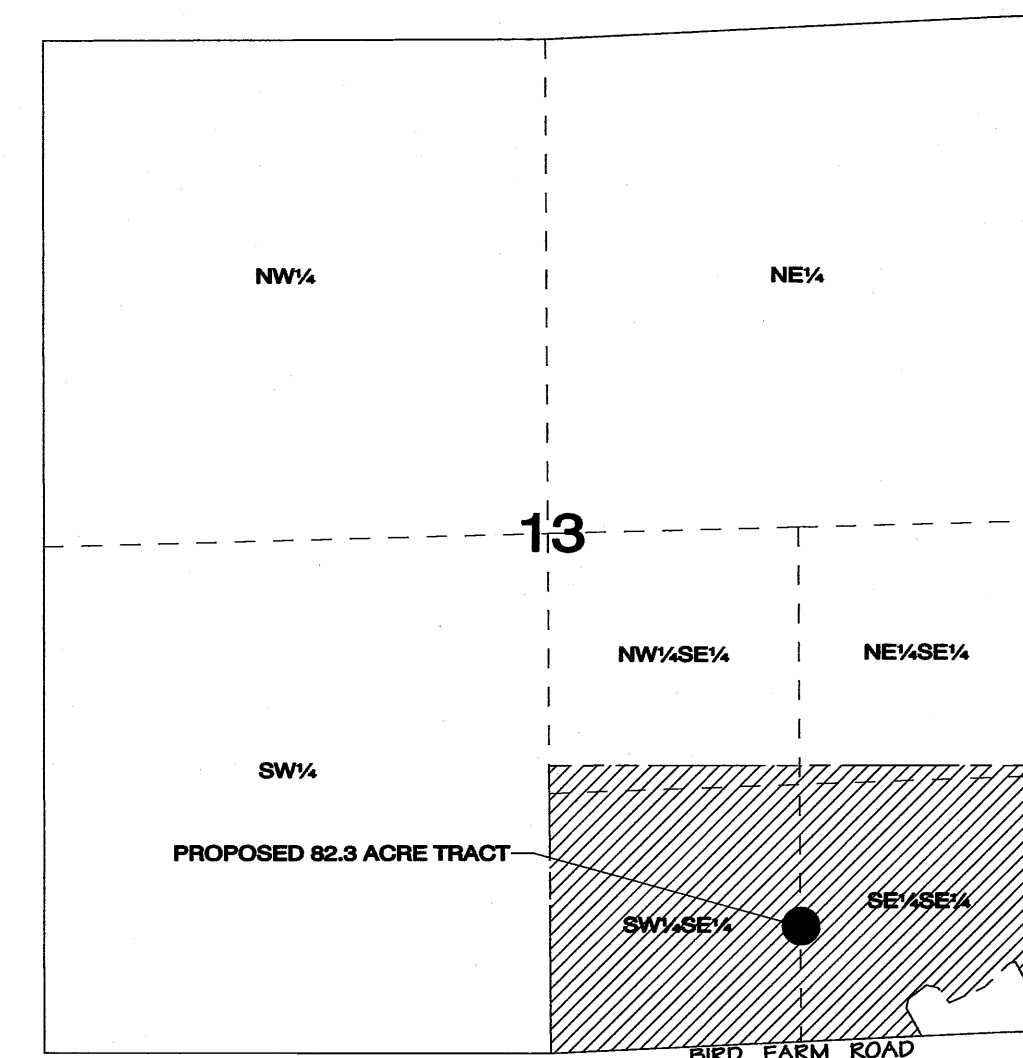


SCALE : 1" = 200'

PROPERTY IS ZONED AGRICULTURAL

LOCATION

SCALE: 1" = 1000'

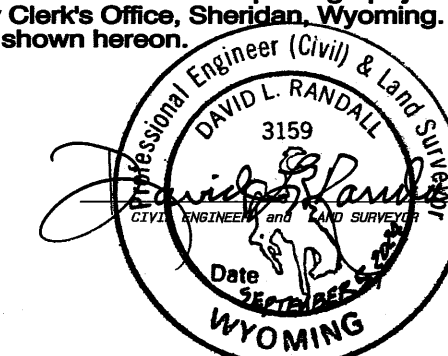


TOWNSHIP 54 NORTH, RANGE 84 WEST

State of Wyoming } ss
County of Sheridan }

I, David L. Randall, of Sheridan, Wyoming being a duly registered Professional Engineer and Land Surveyor in the State of Wyoming do hereby certify that this map was made from field notes of an actual survey performed by me or under my direct supervision in August and September of 2024, from available aerial photography and from records on file in the Sheridan County Clerk's Office, Sheridan, Wyoming. This map correctly represents all of the data shown hereon.

Registration No. 3159 PE & LS



MAP

showing

PROPOSED 82.3 ACRE TRACT

being a PORTION of the

SE $\frac{1}{4}$

of

SECTION 13,

TOWNSHIP 54 NORTH, RANGE 84 WEST

of the

**SIXTH PRINCIPAL MERIDIAN
SHERIDAN COUNTY, WYOMING**

for

J. KENT SWEETZEY

**4253 ARMSTRONG PARKWAY
DALLAS, TEXAS 75205**

DRAWN BY REX RANDALL - SEPTEMBER 4, 2024
RANDALL ENGINEERING SURVEYS - SHERIDAN, WYOMING

