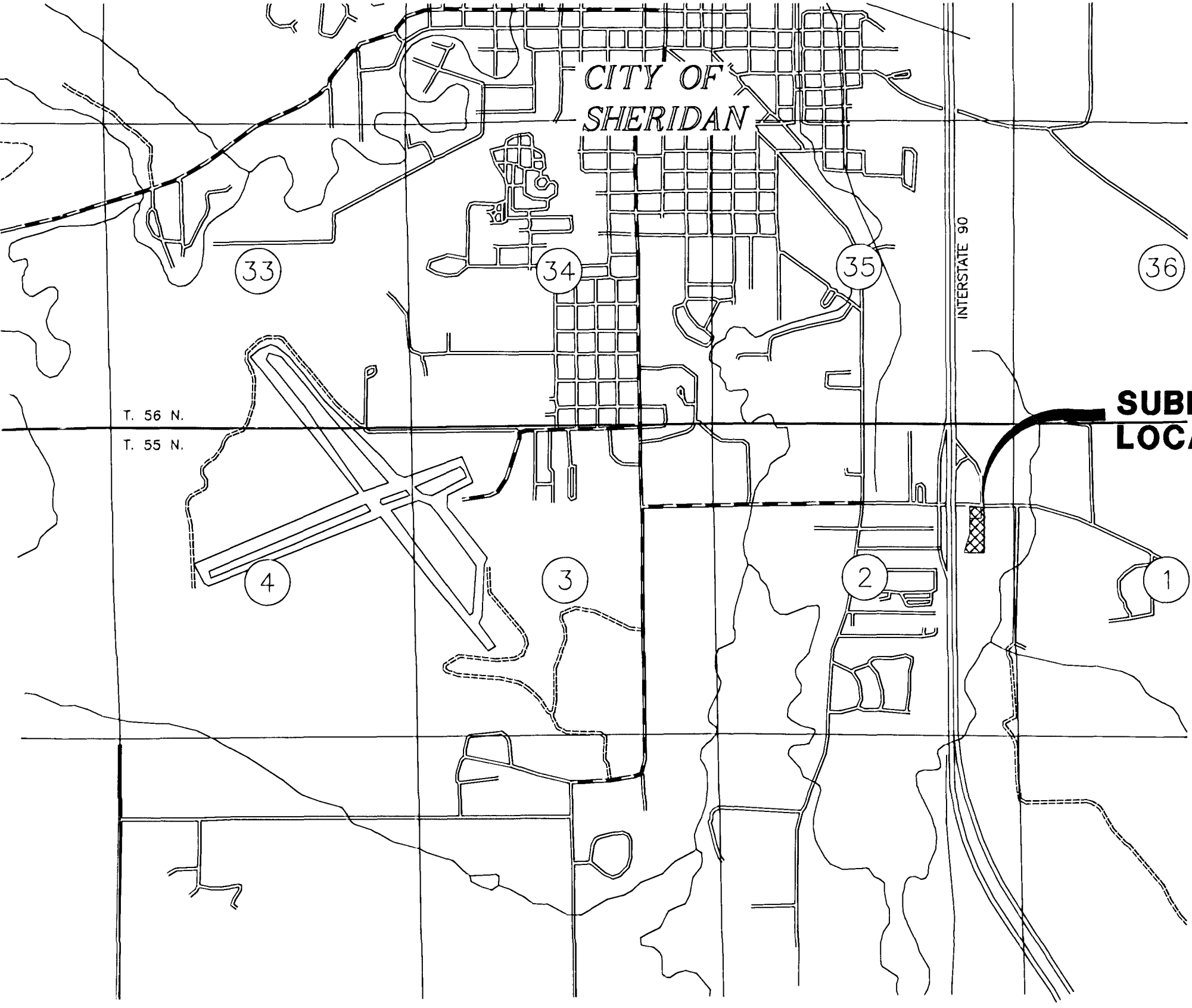


BCI SUBDIVISION

LOCATED IN THE SE1/4NE1/4 OF SECTION 2,
TOWNSHIP 55 NORTH, RANGE 84 WEST, SIXTH PRINCIPAL MERIDIAN,
SHERIDAN COUNTY, WYOMING



LOCATION MAP
SCALE 1" = 2000'

R. 84 W.

APPROVALS

THE SHERIDAN PLANNING AND ZONING COMMISSION HEREBY
RECOMMENDS THE APPROVAL OF THE FOREGOING PLAT
THIS 4th DAY OF April, 1995.
Robert W. Brown
CHAIRMAN SECRETARY

APPROVED BY THE CITY ENGINEER OF SHERIDAN, WYOMING
THIS 3rd DAY OF April, 1995.
Ernest J. LaMura
CITY ENGINEER

APPROVED BY THE MAYOR AND CITY CLERK IN THE CITY OF
SHERIDAN, WYOMING THIS 6th DAY OF February, 1995.
ATTEST:
Arthur V. Elkin *Della Huetel*
CITY CLERK MAYOR

CERTIFICATE OF RECORD

STATE OF WYOMING }
COUNTY OF SHERIDAN } SS
THE FOREGOING INSTRUMENT WAS FILED FOR RECORD
IN MY OFFICE AT 3:30 O'CLOCK P.M. ON THE 28
DAY OF April, 1995 AND RECORDED IN DRAWER B
PLAT # 31
NO. 196414
FEE \$60.00
Donald H. Deley
COUNTY CLERK

CERTIFICATE OF SURVEY

I WILLIAM E. PUGH, A DULY REGISTERED LAND SURVEYOR
IN THE STATE OF WYOMING, DO HEREBY CERTIFY THAT THIS
PLAT OF "BCI SUBDIVISION" LOCATED WITHIN THE
CITY OF SHERIDAN, SHERIDAN COUNTY, WYOMING TRULY
AND CORRECTLY REPRESENTS THE RESULTS OF A SURVEY
MADE BY ME OR UNDER MY SUPERVISION ON April 1, 1994.

CERTIFICATE OF DEDICATION

THE ABOVE SUBDIVISION TITLED "BCI SUBDIVISION"
SHERIDAN COUNTY, WYOMING AS APPEARS ON THIS PLAT IS WITH
FREE CONSENT, AND IN ACCORDANCE WITH THE DESIRES OF THE
UNDERSIGNED OWNERS AND PROPRIETORS, CONTAINING 5.007
ACRES MORE OR LESS, HAVE BY THESE PRESENTS LAID OUT,
AND SURVEYED AS A SUBDIVISION TITLED "BCI SUBDIVISION"
AND DO HEREBY DEDICATE AND CONVEY TO AND FOR PUBLIC USE
FOREVER HEREAFTER THE STREETS AS LAID OUT AND DESIGNATED
ON THIS PLAT, AND ALSO RESERVE PERPETUAL EASEMENTS
FOR THE INSTALLATION AND MAINTENANCE OF UTILITIES AND
FOR IRRIGATION AND DRAINAGE FACILITIES AS LAID OUT AND
DESIGNATED ON THIS PLAT HEREBY RELEASING AND WAIVING
ALL HOMESTEAD RIGHTS.
EXECUTED THIS 27th DAY OF March, 1995, BY:

William E. Pugh
James G. Porter
James G. Porter

STATE OF WYOMING }
COUNTY OF SHERIDAN } SS
THE FOREGOING INSTRUMENT WAS ACKNOWLEDGED BEFORE ME
THIS 27th DAY OF March, 1995,
BY _____ WITNESS MY HAND AND
OFFICIAL SEAL.
MY COMMISSION EXPIRES Oct. 17, 1998
William E. Pugh
NOTARY PUBLIC

STATE OF WYOMING }
COUNTY OF SHERIDAN } SS
THE FOREGOING INSTRUMENT WAS ACKNOWLEDGED BEFORE ME
THIS 28th DAY OF April, 1995,
BY _____ WITNESS MY HAND AND
OFFICIAL SEAL.
MY COMMISSION EXPIRES Oct. 17, 1998
William E. Pugh
NOTARY PUBLIC

LEGAL DESCRIPTION

BCI SUBDIVISION, LOCATED IN THE CITY
OF SHERIDAN, SHERIDAN COUNTY, WYOMING AND MORE
PARTICULARLY DESCRIBED AS FOLLOWS:
A TRACT OF LAND LOCATED IN THE SE1/4NE1/4 OF SECTION 2,
TOWNSHIP 55 NORTH, RANGE 84 WEST, 6TH PRINCIPAL MERIDIAN,
SHERIDAN COUNTY, WYOMING.

BEGINNING AT A POINT WHICH IS LOCATED SOUTH 72°53'11"
EASE 4,689.64 FEET FROM THE NORTHWEST CORNER OF
SECTION 2, TOWNSHIP 55 NORTH, RANGE 84 WEST
6TH PRINCIPAL MERIDIAN, SHERIDAN COUNTY, WYOMING
THENCE SOUTH 89°33'00" EAST 253.00 FEET TO A POINT
THENCE SOUTH 00°17'00" WEST 796.00 FEET TO A POINT
THENCE NORTH 89°33'00" WEST 352.30 FEET TO A POINT
THENCE NORTH 16°50'00" EAST 348.00 FEET TO A POINT
THENCE NORTH 00°17'00" EAST 461.50 FEET TO THE
POINT OF BEGINNING, CONTAINING 5.007 ACRES MORE
OR LESS. THE ABOVE DESCRIBED PROPERTY IS PRESENTLY ZONED B1.
SAID PROPERTY BEING RECORDED IN BOOK OF DEEDS 354,
PAGE 50.

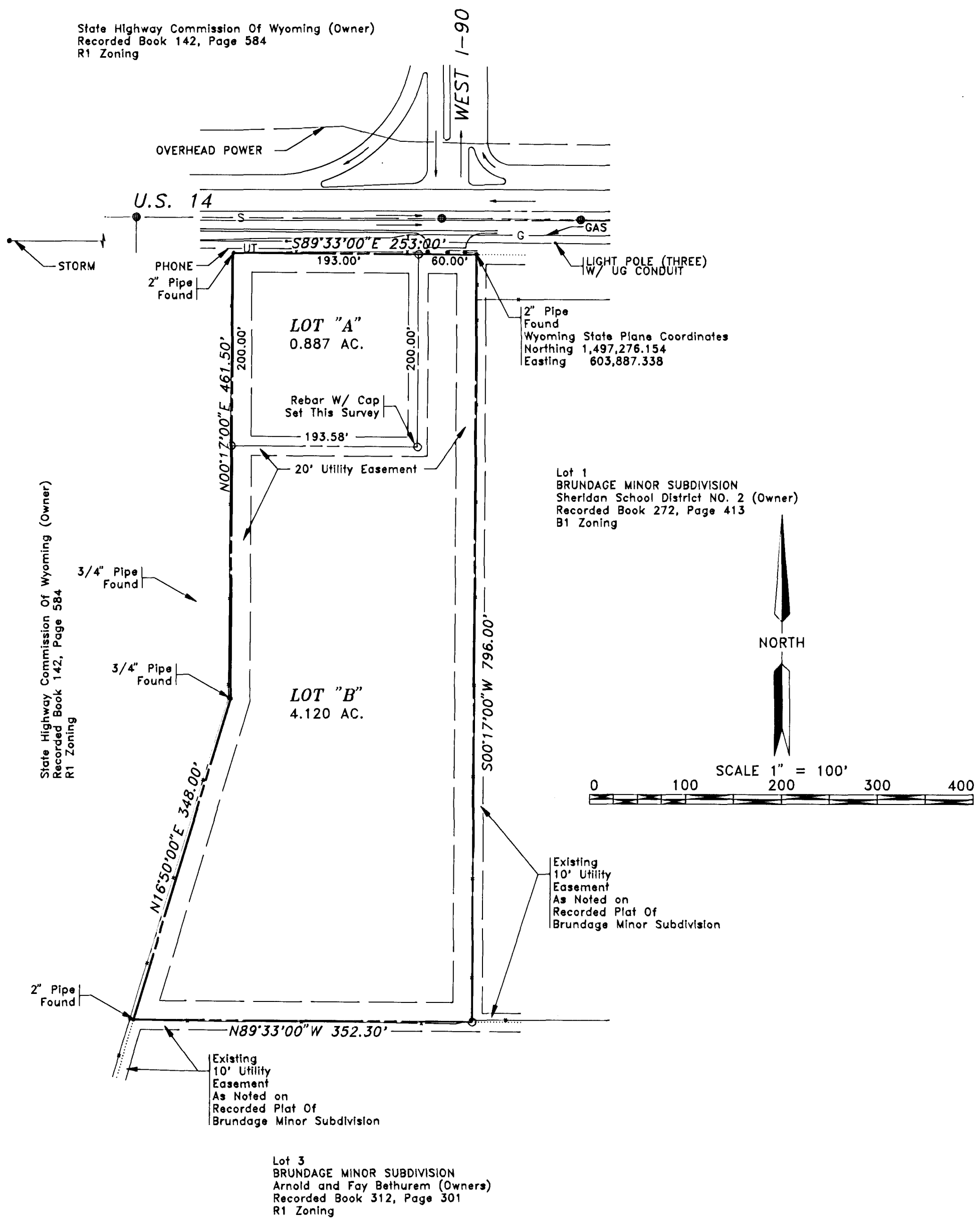
NOTES:

- ALL COORDINATES ARE WYOMING STATE PLANE SURFACE
COORDINATES. SURFACE COORDINATES MUST BE DIVIDED BY
1.000231483 TO OBTAIN TRUE STATE PLANE COORDINATES.
- BASIS OF BEARING IS WYOMING STATE PLANE (EAST
CENTRAL ZONE.)
- EXISTING UTILITY EASEMENTS AS SHOWN ON THIS PLAT
ARE EASEMENTS DEDICATED ON A RECORDED PLAT OF BRUNDAGE
MINOR SUBDIVISION, RECORDED IN PLAT BOOK 1, PAGE 171.

- METAL PIN FOUND
- METAL PIN SET
- STONE FOUND
- PIPE FOUND
- 28/27 SECTION CORNER
- 33/34
- x PK FOUND
- x PK SET
- x POWER POLE
- x FENCE POST
- x MANHOLE
- x CATCH BASIN
- x FIRE HYDRANT
- x VALVE
- x TRAVERSE POINT
- x TREE
- x FENCE
- x WATER LINE
- x OVERHEAD POWER
- x UNDER GROUND POWER
- x SANITARY SEWER
- x STORM SEWER
- x GAS
- x OVERHEAD TELEPHONE
- x UNDER GROUND TELEPHONE
- x PROPERTY LINE
- x CREEK
- x CULVERT

LEGEND:

- METAL PIN FOUND
- METAL PIN SET
- STONE FOUND
- PIPE FOUND
- SECTION CORNER
- PK FOUND
- PK SET
- POWER POLE
- FENCE POST
- MANHOLE
- CATCH BASIN
- FIRE HYDRANT
- VALVE
- TRAVERSE POINT
- TREE
- FENCE
- WATER LINE
- OVERHEAD POWER
- UNDER GROUND POWER
- SANITARY SEWER
- STORM SEWER
- GAS
- OVERHEAD TELEPHONE
- UNDER GROUND TELEPHONE
- PROPERTY LINE
- CREEK
- CULVERT



CENTENNIAL
ENGINEERING & RESEARCH, INC.
ENGINEERING-ARCHITECTURAL SERVICES
237 NORTH MAIN STREET
SHERIDAN, WYOMING 82801
PH. (307) 672-1711

PROJECT NO.
94037-1

SHEET NO.
ONE