

CERTIFICATE OF DEDICATION

THE ABOVE OR FOREGOING SUBDIVISION OF PARTS OF SW 1/4 SEC 21 AND E 1/2 SEC 21, T54N, R77W, AS APPEARS ON THIS PLAT, IS WITH THE FREE CONSENT, AND IN ACCORDANCE WITH THE DESIRES OF THE UNDERSIGNED OWNERS AND PROPRIETORS, CONTAINING 97.85 ACRES MORE OR LESS, HAVE BY THESE PRESENTS LAID OUT, AND SURVEYED AS ELLIOTT SUBDIVISION AND DO HEREBY DEDICATE AND CONVEY TO AND FOR PUBLIC USE FOREVER HEREAFTER THE STREETS AS ARE LAID OUT AND DESIGNATED ON THIS PLAT, WITNESS OUR HANDS AND SEALS THIS 14TH DAY OF AUGUST, A.D. 1980, AND THE UNDERSIGNED OWNERS AND PROPRIETORS DO HEREBY RELEASE AND WAIVE ALL RIGHTS, UNDER AND BY VIRTUE OF THE HOMESTEAD EXEMPTION LAWS OF THE STATE OF WYOMING.

ALL DEDICATED ROADWAYS, STREETS, INCLUDING EASEMENT AND RIGHT-OF-WAY OF 15 FEET ON EACH SIDE OF THE PROPERTY LINES OF THE ORIGINAL LOTS, OF THE SUBDIVISION ARE HEREBY RESERVED FOR POLES, PIPES, AND CONDUITS FOR HEATING, LIGHTING, ELECTRICITY, GAS, TELEPHONES, SEWER, WATER, OR OTHER PUBLIC, CABLE TELEVISION, OR QUASI PUBLIC UTILITY SERVICE PURPOSES, TOGETHER WITH THE RIGHT OF ENTRY AT ANY TIME FOR THE PURPOSES OF FURTHER CONSTRUCTION AND REPAIR.

BY: Agnes R. Elliott ALIA AGNES RUTH ELLIOTT ALIA AGNES ELLIOTT.

James N. Collins ALIA JAMES COLLINS.

STATE OF WYOMING } SS
COUNTY OF SHERIDAN }

THE FOREGOING INSTRUMENT WAS ACKNOWLEDGED BEFORE ME BY
AGNES R. ELLIOTT ALIA AGNES RUTH ELLIOTT ALIA AGNES ELLIOTT.

JAMES N. COLLINS ALIA JAMES COLLINS.

THIS 14TH DAY OF AUGUST 1980.
WITNESS MY HAND AND OFFICIAL SEAL.

Walter Mitchell
NOTARY PUBLIC
MY COMMISSION EXPIRES Sept. 16, 1980

CERTIFICATE OF SURVEYOR

STATE OF WYOMING } SS
COUNTY OF SHERIDAN }

I, ELMER KUBALL, A DULY REGISTERED LAND SURVEYOR IN THE STATE OF WYOMING, DO HEREBY CERTIFY THAT THIS PLAT OF ELLIOTT SUBDIVISION CORRECTLY REPRESENTS THE RESULTS OF A SURVEY MADE BY ME OR UNDER MY DIRECT SUPERVISION.

WYOMING REGISTRATION NO. 2614

Elmer Kuball
R.E. & L.S.

CERTIFICATE OF APPROVAL

APPROVED BY THE SHERIDAN COUNTY BOARD OF COUNTY COMMISSIONERS THIS 6TH DAY OF JANUARY A.D. 1981.

William J. Laza
CHAIRMAN

ATTEST:

Margaret Lewis
CLERK OF THE BOARD

APPROVED BY THE SHERIDAN COUNTY PLANNING COMMISSION THIS 6TH DAY OF JANUARY A.D. 1981.

William J. Laza
CHAIRMAN OF THE PLANNING COMMISSION

ATTEST:

Walter Mitchell
CLERK OF THE PLANNING COMMISSION

CERTIFICATE OF RECORDER

STATE OF WYOMING } SS
COUNTY OF SHERIDAN }

THIS INSTRUMENT WAS FILED FOR RECORD AT 9:00 A.M. O'CLOCK ON THE 23 DAY OF JANUARY A.D. 1981 AND DULY RECORDED IN BOOK 1 OF PLATS ON PAGE 313 NO. 21305 FEE \$3.00

Margaret Lewis
COUNTY CLERK

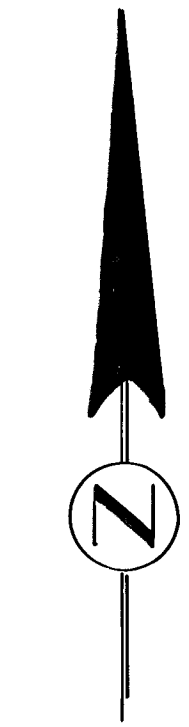
DEPUTY

PLAT OF

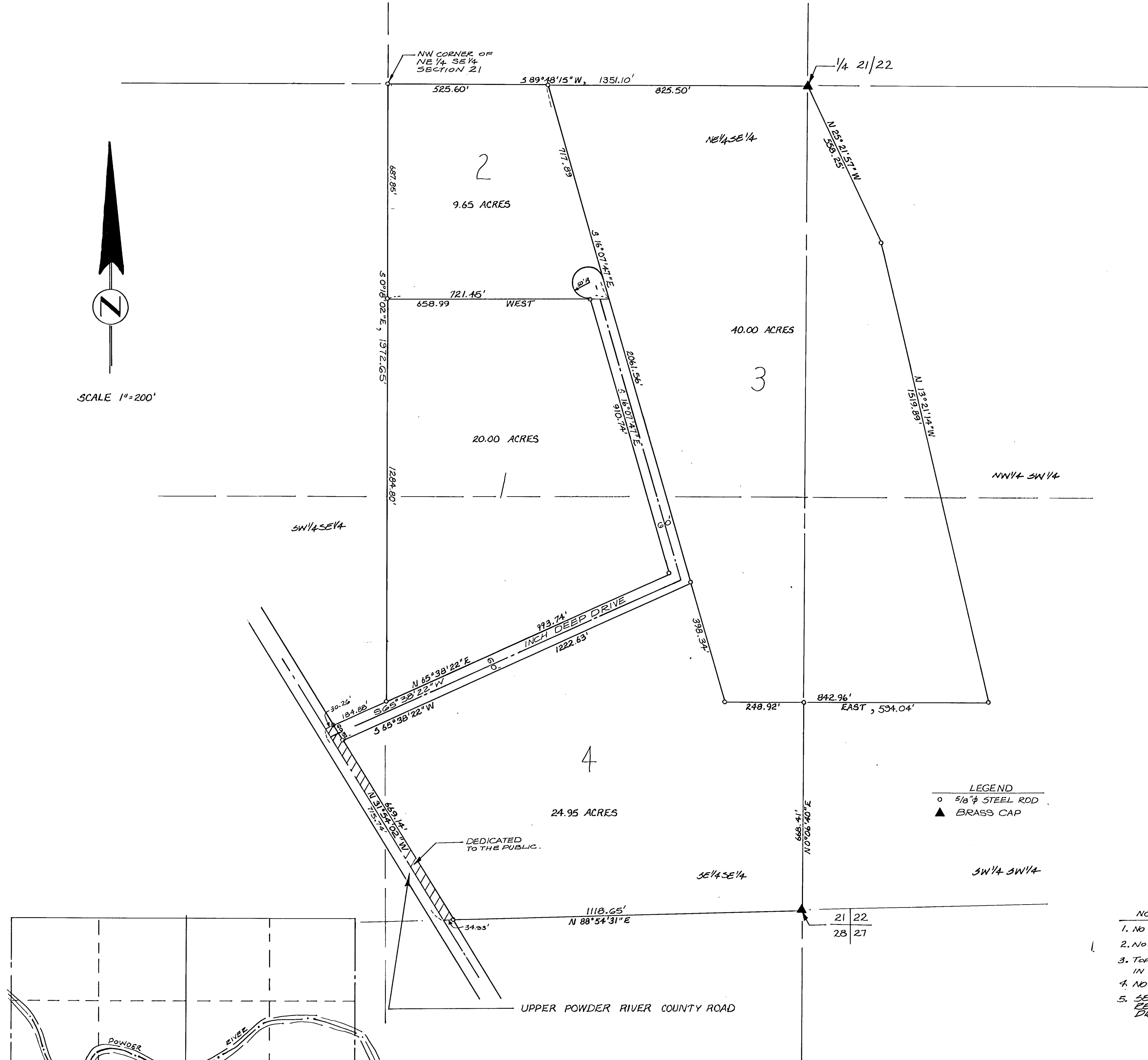
ELLIOTT SUBDIVISION

OWNER: AGNES ELLIOTT
ARVADA, WYOMING 82831

W.J. PILCH & ASSOCIATES DECEMBER, 1977



SCALE 1"=200'



DESCRIPTION

A TRACT OF LAND LOCATED IN THE SW 1/4 SE 1/4 AND THE E 1/2 SE 1/4 OF SECTION 21, AND THE W 1/2 SW 1/4 OF SECTION 22, T54N, R77W, 6TH FM., SHERIDAN COUNTY, WYOMING, DESCRIBED AS FOLLOWS:
BEGINNING AT THE E 1/4 CORNER OF SAID SECTION 21; THENCE ALONG THE NORTH LINE OF SAID SE 1/4, S 89° 48' 15" W, 1351.10 FEET TO THE NW CORNER OF SAID E 1/2 SE 1/4; THENCE ALONG THE WEST LINE OF SAID E 1/2 SE 1/4, S 0° 18' 02" E, 1972.65 FEET TO A POINT; THENCE LEAVING SAID WEST LINE, S 65° 38' 22" W, 215.14 FEET TO A POINT ON THE CENTERLINE OF UPPER POWDER RIVER ROAD; THENCE ALONG SAID CENTERLINE, S 31° 54' 02" E, 115.74 FEET TO A POINT; THENCE LEAVING SAID CENTERLINE, N 88° 54' 31" E, 1153.58 FEET TO THE SE CORNER OF SAID SECTION 21; THENCE ALONG THE EAST LINE OF SAID SECTION 21, N 0° 06' 40" E, 668.41 FEET TO A POINT; THENCE LEAVING SAID EAST LINE, EAST, 574.04 FEET TO A POINT; THENCE N 13° 21' 14" W, 1519.89 FEET TO A POINT; THENCE N 25° 21' 57" W, 558.25 FEET TO THE POINT OF BEGINNING.

LOCATION MAP
SCALE 1"=1000'

E-7