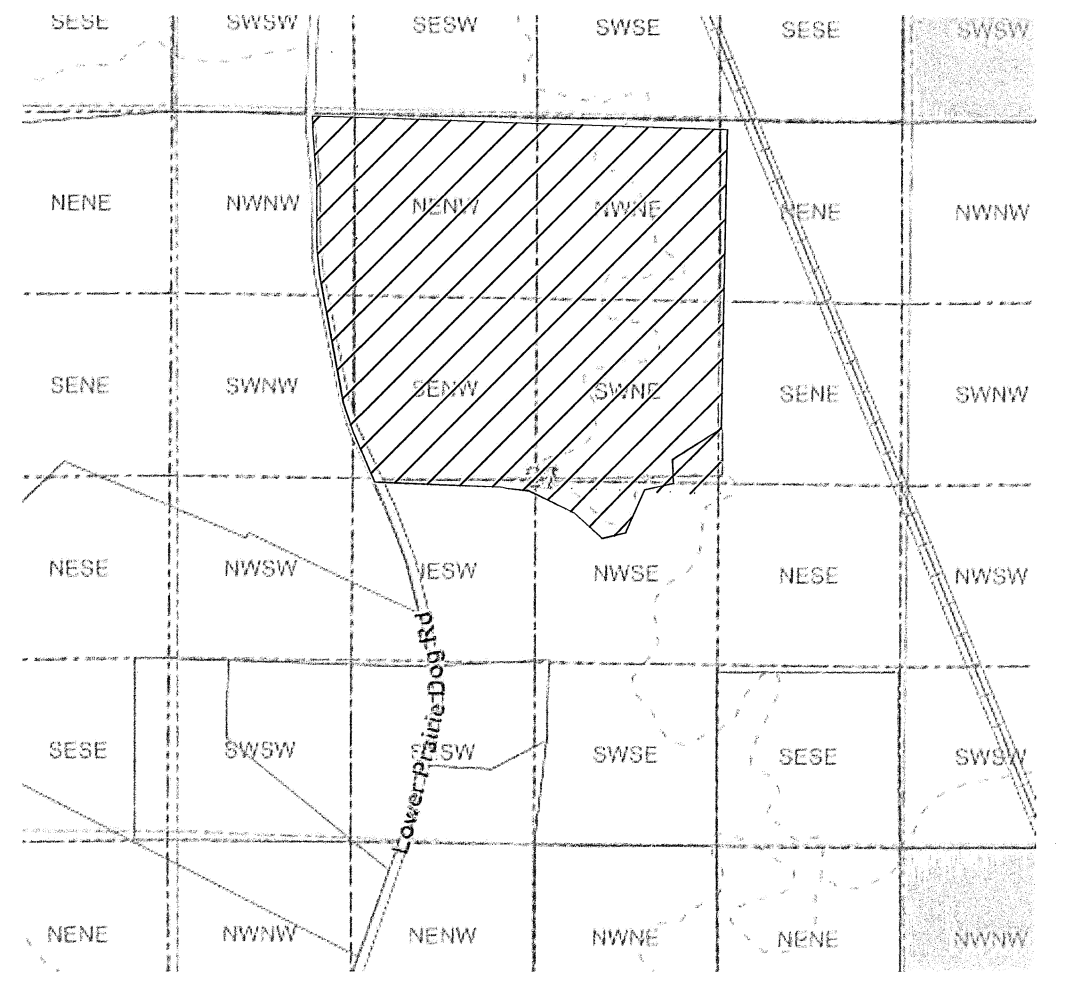


RECORD OF SURVEY
FOR
BOUNDARY LINE ADJUSTMENT

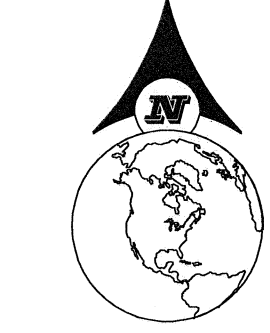
SITUATED IN THE W1/2NE1/4, NW1/4, NW1/4SE1/4, NE1/4SW1/4, OF
SECTION 27, TOWNSHIP 57 NORTH, RANGE 83 WEST, 6TH PRINCIPAL
MERIDIAN, SHERIDAN COUNTY, WYOMING

FOR THE PURPOSES OF CREATING A BOUNDARY LINE ADJUSTMENT IN ACCORDANCE WITH WYOMING
LAW AND DOES NOT HAVE THE EFFECT OF CREATING ANY NEW, SEPARATELY OWNED PARCEL.

T57N R83W



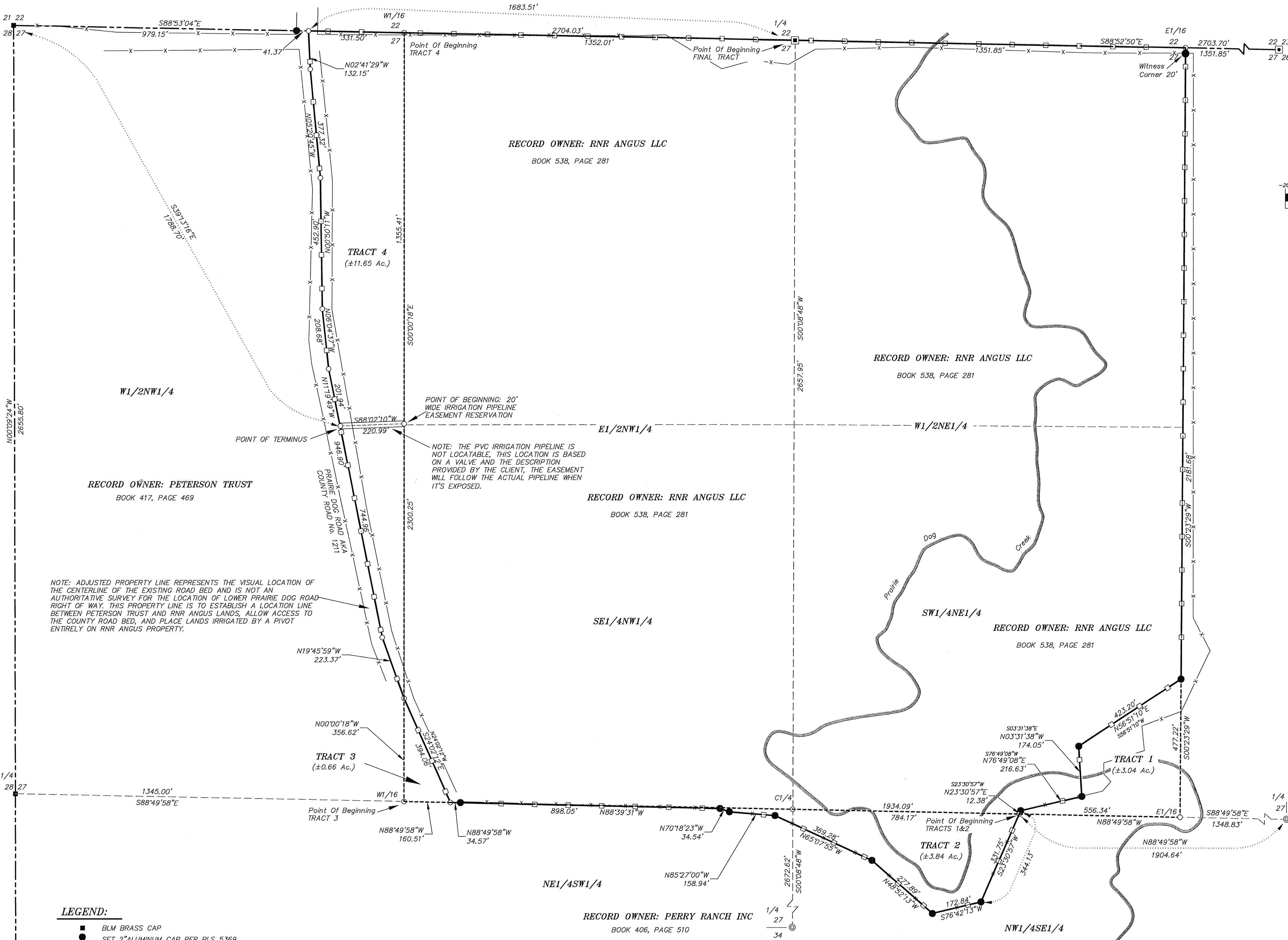
LOCATION MAP
NOT TO SCALE



SCALE: 1" = 200'

BEARINGS ARE BASED ON A LOW DISTORTION PROJECTION WITH AN ORIGIN POINT
OF LAT 44°38'54.6" LONG 106°51'17.3" (NAD83). DISTANCES ARE MULTIPLIED TO
SURFACE FROM ELLIPSOID DISTANCES BY THE SCALE FACTOR OF 1.000172.

GRAPHIC SCALE



LEGEND:

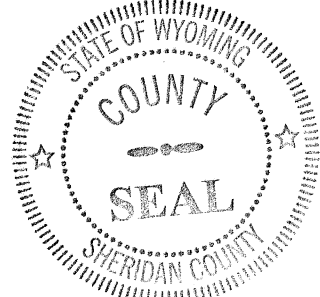
- BLM BRASS CAP
- SET 2" ALUMINUM CAP PER PLS 5369
- MONUMENT AS DESCRIBED IN BLM NOTES
- 3-1/4" ALUMINUM CAP PER PLS 2608
- 3-1/4" ALUMINUM CAP PER PLS 5369
- NOTHING FOUND/NOTHING SET
- FENCE LINE
- SECTION LINE
- INTERIOR SECTION LINE
- LINE TO BE ADJUSTED
- FINAL TRACT LINE RNR ANGUS LLC

CERTIFICATE OF RECORDER

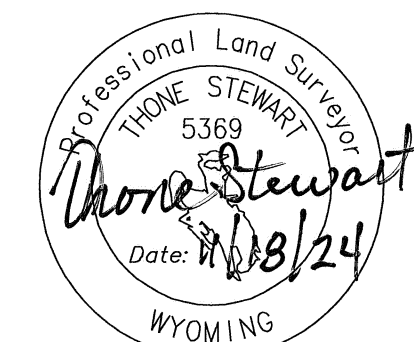
STATE OF WYOMING : ss
COUNTY OF SHERIDAN

I HEREBY CERTIFY THAT THIS PLAT WAS FILED FOR RECORD IN MY OFFICE OF AT 2:37 O'CLOCK P.M.,
THIS 18, DAY OF November, 2024, AND RECORDED IN PLAT BOOK A, ON PAGE 764
Doc # 2024-795746

Eda Schunk Thompson
COUNTY CLERK



I, THONE STEWART, A DULY REGISTERED LAND SURVEYOR
IN THE STATE OF WYOMING, DO HEREBY STATE THAT THIS
PLAT REPRESENTS THE RESULTS OF A SURVEY MADE BY
ME OR UNDER MY DIRECT SUPERVISION.



RECORD OF SURVEY
BOUNDARY LINE ADJUSTMENT
PETERSON/PERRY

SITUATED IN THE W1/2NE1/4, NW1/4, NW1/4SE1/4, NE1/4SW1/4, OF
SECTION 27, TOWNSHIP 57 NORTH, RANGE 83 WEST, 6TH PRINCIPAL
MERIDIAN, SHERIDAN COUNTY, WYOMING

RESTFELD
SURVEYING
2340 WETLANDS DR., SUITE 100
SHERIDAN, WY 82801
307-672-7415

ROSS PETERSON
446 LOWER PRAIRIE DOG ROAD
SHERIDAN, WY 82801

JN: 2024-082
DN: 2024-0820
TAB: PLAT
PF: 12024-082
REVIEWED BY: CS
NOV, 2024