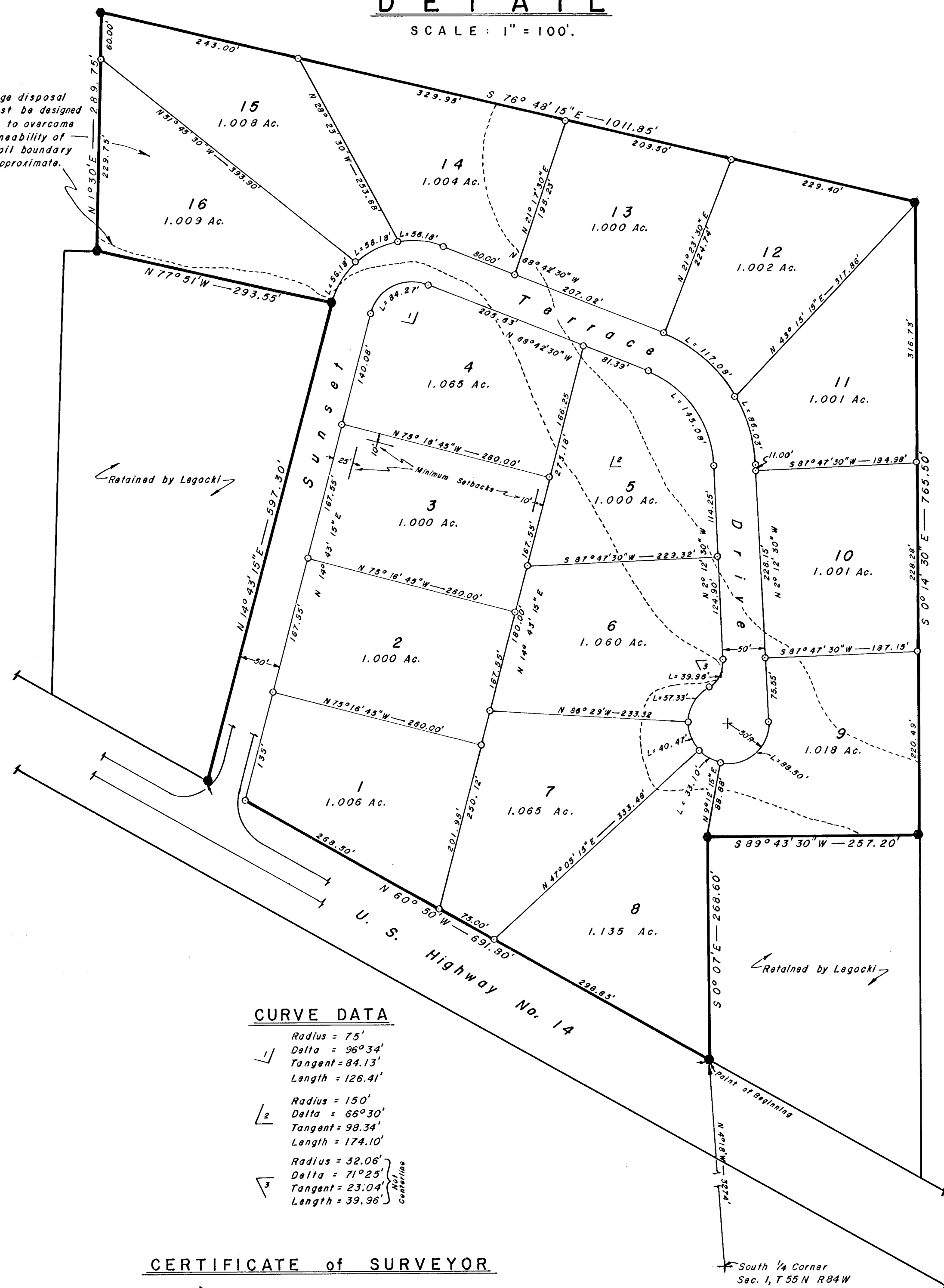


# DETAIL

SCALE: 1" = 100'

Special sewage disposal systems must be designed for this area to overcome the slow permeability of the soil. Soil boundary lines are approximate.



## CURVE DATA

- 1) Radius = 75'  
Delta = 96°34'  
Tangent = 84.13'  
Length = 126.41'
- 2) Radius = 150'  
Delta = 66°30'  
Tangent = 98.34'  
Length = 174.10'
- 3) Radius = 32.06'  
Delta = 71°25'  
Tangent = 23.04'  
Length = 39.96'

## CERTIFICATE of SURVEYOR

State of Wyoming } ss  
County of Sheridan }

I, Carl R. Oslund, of Sheridan, Wyoming, hereby certify that this plat was made from field notes of surveys made by me or under my supervision during the months of July through October of 1977. This plat correctly represents all the data shown hereon.

Registration No. 102 LS

Subscribed in my presence and sworn to before me this 25th day of October, 1977.

My commission expires January 15, 1980

## CERTIFICATE of DEDICATION

The undersigned, Dennis James and Mary Lynne Wisenbaker, husband and wife, and Joe E. and Doris Legocki, husband and wife, all of Sheridan County, Wyoming, hereby certify that they are the sole owners of the tract of land situated in the E<sup>2</sup> NW<sup>4</sup> of Section 1, T55N R84W, 6<sup>th</sup> Principal Meridian, State of Wyoming, whose point of beginning is on the northerly right-of-way of U. S. Highway No. 14, N 4° 18' W, a distance of 3274' feet from the South 1/4 Corner of said Section 1; thence along said right-of-way line for a distance of 691.90 feet with bearing of N 60° 50' W; thence N 43° 13' 15" E, a distance of 597.30 feet; thence N 77° 51' W, a distance of 293.55 feet; thence N 1° 30' E, a distance of 289.75 feet; thence S 76° 48' 15" E, a distance of 1011.85 feet; thence S 0° 14' 30" E, a distance of 765.50 feet; thence S 89° 43' 30" W, a distance of 257.20 feet; thence S 0° 07' E, a distance of 268.60 feet to the point of beginning; said tract containing 18.3875 acres.

The above mentioned owners also certify that this plat, which delineates the above described tract of land, is made with the free consent and is in accordance with the desires of the undersigned owners and proprietors who do hereby dedicate to and for public use forever hereafter the Sunset Terrace Drive as laid out and designated on this plat.

There will be filed, with this plat, the set of covenants covering said Country Estates Subdivision.

The minimum setback for residences or garages shall be 25 feet from the front line and 10 feet from any side or back line, as illustrated in Tract 3.

The dedicated roadway, Sunset Terrace Drive, and a right-of-way of 10 feet on each side of the property lines of the original lots of the subdivision are hereby reserved for utility purposes, together with the right of entry at any time for the purpose of further construction and repair.

The owners hereby release and waive all rights under and by virtue of the Homestead Exemption Laws of the State of Wyoming.

*Dennis James Wisenbaker*  
*Mary Lynne Wisenbaker*  
*Joe E. Legocki*  
*Doris Legocki*

State of Wyoming } ss  
County of Sheridan }

The foregoing instrument was acknowledged before me this 20th day of October, 1977 by Dennis James and Mary Lynne Wisenbaker and Joe E. and Doris Legocki.

My commission expires January 15, 1980

## SHERIDAN COUNTY PLANNING COMMISSION

### CERTIFICATE of APPROVAL

Approved by the Sheridan County Planning Commission this 22 day of Oct, 1977.

Attest: *Edgar W. Symon*  
Chairman of the Planning Commission

## BOARD of COUNTY COMMISSIONERS

### CERTIFICATE of APPROVAL

Approved by the Sheridan County Board of County Commissioners this 25th day of October, 1977.

Attest: *Margaret Lewis*  
Clerk of the Board

## CERTIFICATE of RECORDER

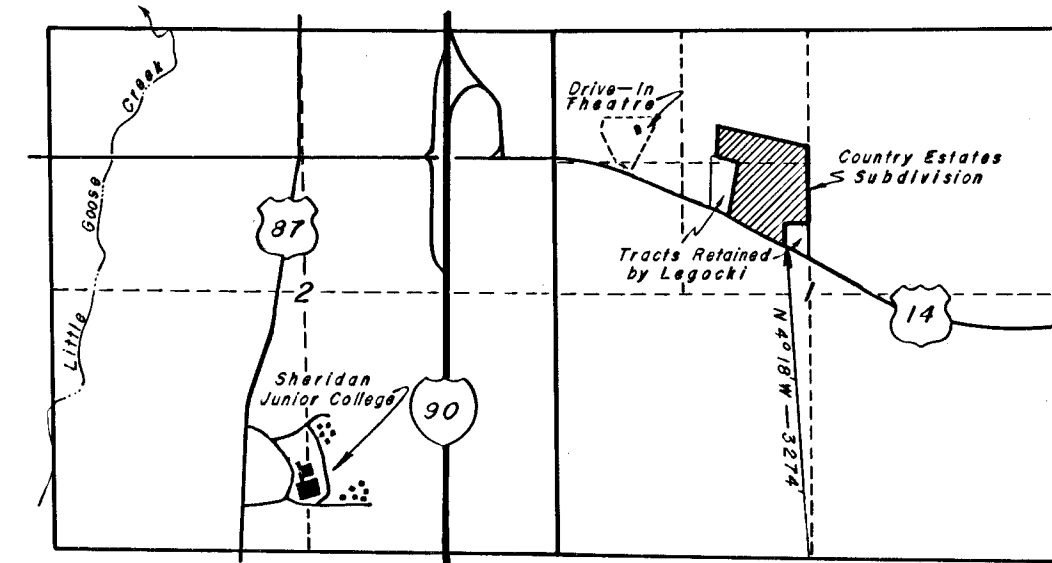
State of Wyoming } ss  
County of Sheridan }

I, hereby certify that this plat was filed for record in my office at 1:30 O'clock P.M. this 28th day of October, 1977 and recorded in Plat Book Number 1 on page 131.

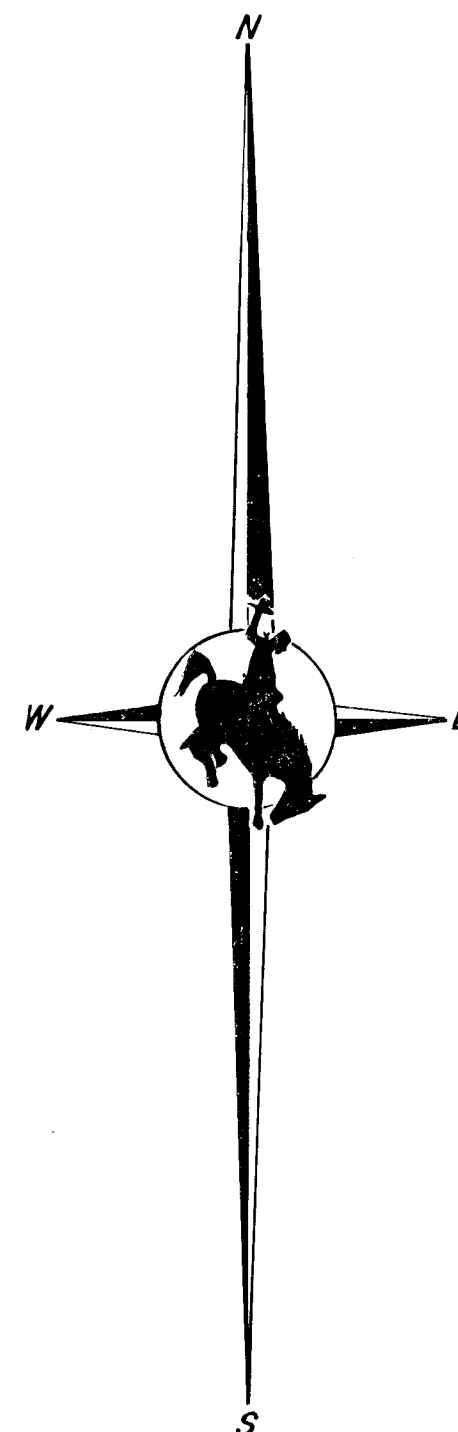
No. 721387  
Fee \$25.25  
*Margaret Lewis*  
County Clerk

## LOCATION

SCALE: 1" = 2000'



T 55 N R 84 W



## PLAT

of the

COUNTRY ESTATES  
SUBDIVISION

SHERIDAN COUNTY, WYOMING

for

DENNIS JAMES and MARY LYNNE WISENBAKER

SHERIDAN COUNTY, WYOMING

Drawn by Dave Randall on October 17th, 1977