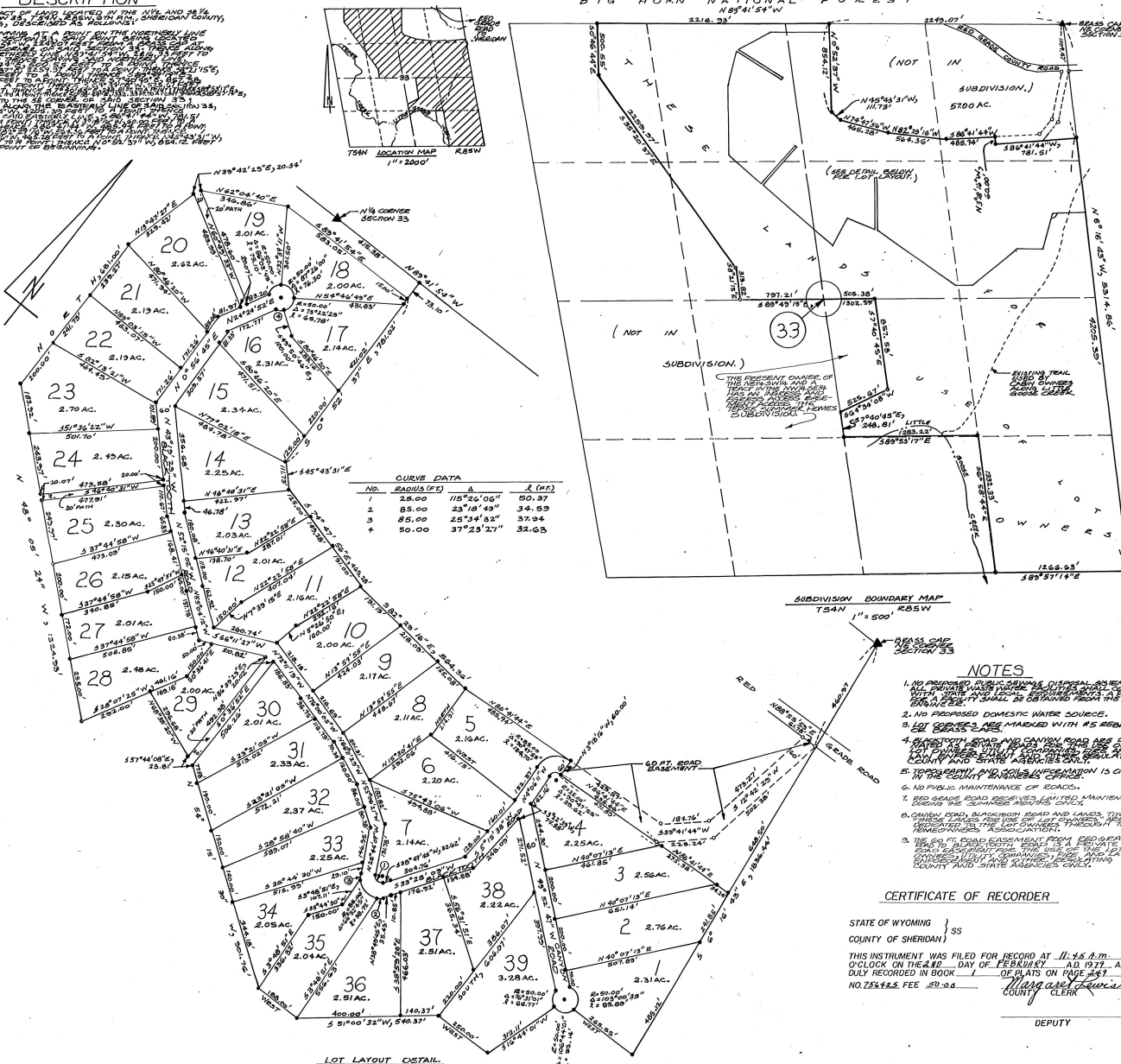


DESCRIPTION

A TRACT OF LAND LOCATED IN THE N1/4 AND S1/4 OF SECTION 33, T54N, R85W, SHERIDAN COUNTY, WYOMING, BEING 2.9144 ACRES MORE OR LESS, AS APPEARS ON THIS PLAT, IS HEREBY DEDICATED TO THE PUBLIC AS A TRAIL FOR THE USE OF THE PUBLIC, TO BE KNOWN AS THE "TEPEE SUMMER HOMES TRAIL".

BIG HORN NATIONAL FOREST



NO.	RADIUS (FEET)	Δ	Δ (IN FEET)
1	25.00	118°26'06"	50.37
2	85.00	23°16'49"	34.59
3	85.00	25°34'52"	37.94
4	50.00	37°25'27"	32.65

CERTIFICATE OF DEDICATION

THE ABOVE OR FOREGOING SUBDIVISION OF N1/4 AND S1/4 OF SECTION 33, T54N, R85W, AS APPEARS ON THIS PLAT, IS WITH THE FREE CONSENT, AND IN ACCORDANCE WITH THE DESIRES OF THE UNDERSIGNED OWNERS AND PROPRIETORS, CONTAINING 2.9144 ACRES MORE OR LESS; HAVE BY THESE PRESENTS LAID OUT, AND SURVEYED AS TEPEE SUMMER HOMES, AND DO HEREBY DEDICATE AND CONVEY TO AND FOR PRIVATE USE, FOREVER, HEREFTER THE STREETS AS ARE LAID OUT AND DESIGNATED ON THIS PLAT, WITHIN OUR HANDS AND SEALS THIS 25TH DAY OF JANUARY, A.D. 1979, AND THE UNDERSIGNED OWNERS AND PROPRIETORS DO HEREBY RELEASE AND WAIVE ALL RIGHTS, UNDER AND BY VIRTUE OF THE HOMESTEAD EXEMPTION LAWS OF THE STATE OF WYOMING.

ALL DEDICATED ROADWAYS, STREETS, INCLUDING EASEMENT AND RIGHT-OF-WAY OF 15 FEET ON EACH SIDE OF THE PROPERTY LINES OF THE ORIGINAL LOTS, OF THE SUBDIVISION ARE HEREBY RESERVED FOR POLES, PIPES, AND CONDUITS FOR HEATING, LIGHTING, ELECTRICITY, GAS, TELEPHONES, SEWER, WATER, OR OTHER PUBLIC, CABLE TELEVISION, OR QUASI-PUBLIC UTILITY SERVICE PURPOSES, TOGETHER WITH THE RIGHT OF ENTRY AT ANY TIME FOR THE PURPOSES OF FURTHER CONSTRUCTION AND REPAIR.

WALTER J. PILCH, TRUSTEE, TEPEE CREEK DEVELOPMENT CO.

JACK E. PELISSIER, TRUSTEE, TEPEE CREEK DEVELOPMENT CO.

STATE OF WYOMING }
COUNTY OF SHERIDAN) SS

THE FOREGOING INSTRUMENT WAS ACKNOWLEDGED BEFORE ME BY:
WALTER J. PILCH, JACK E. PELISSIER, TRUSTEES

THIS 25TH DAY OF JANUARY, 1979.
WITNESS MY HAND AND OFFICIAL SEAL.

Deane M. Child, Notary Public
MY COMMISSION EXPIRES 1-15-81

CERTIFICATE OF SURVEYOR

STATE OF WYOMING) SS
COUNTY OF SHERIDAN)

I, WALTER J. PILCH, A DULY REGISTERED LAND SURVEYOR IN THE STATE OF WYOMING, DO HEREBY CERTIFY THAT THIS PLAT OF THE SUBDIVISION OF THE ABOVE OR FOREGOING TRACT OF LAND, CORRECTLY REPRESENTS THE RESULTS OF A SURVEY MADE BY ME OR UNDER MY DIRECT SUPERVISION.

WYOMING REGISTRATION NO. 537
WALTER J. PILCH, R.E. & L.S.

CERTIFICATE OF APPROVAL

APPROVED BY THE SHERIDAN COUNTY BOARD OF COUNTY COMMISSIONERS THIS 30TH DAY OF JANUARY, A.D. 1979.

ATTEST:
Margaret Levesque, CHAIRMAN

APPROVED BY THE SHERIDAN COUNTY PLANNING COMMISSION THIS 21ST DAY OF JANUARY, A.D. 1979.

ATTEST:
Richard J. Levesque, CHAIRMAN OF THE PLANNING COMMISSION

ATTEST:
GAIL J. O'NEILL, CLERK OF THE PLANNING COMMISSION

CERTIFICATE OF RECORDER

STATE OF WYOMING } SS
COUNTY OF SHERIDAN)

THIS INSTRUMENT WAS FILED FOR RECORD AT 11:26 A.M. O'CLOCK ON THE 10TH DAY OF FEBRUARY, A.D. 1979, AND DULY RECORDED IN BOOK 1 OF PLATS ON PAGE 241.

NO. 754125 FEE \$20.00
MARGARET LEVESQUE, COUNTY CLERK

DEPUTY

TEPEE SUMMER HOMES

A SUBDIVISION
LOCATED IN
SECTION 33, T54N, R85W
SHERIDAN COUNTY, WYOMING

PILCH ENGINEERING AND SURVEYING, INC.
NOVEMBER, 1978

T-15