

TRACT 1

A TRACT OF LAND SITUATED IN THE NW1/4 OF SECTION 17, TOWNSHIP 55 NORTH, RANGE 85 WEST, 6TH P.M., SHERIDAN COUNTY, WYOMING, SAID TRACT OF LAND BEING MORE PARTICULARLY DESCRIBED AS FOLLOWS:

BEGINNING AT THE NORTHEAST CORNER OF SAID NW1/4, THENCE S00°01'34"E, 1322.63 FEET ALONG THE EAST LINE OF SAID NW1/4 TO A POINT, SAID POINT BEING THE SOUTHWEST CORNER OF SAID NW1/4, THENCE S89°59'17"W, 1312.87 FEET ALONG THE SOUTH LINE OF SAID NW1/4 TO A POINT, SAID POINT LYING ON THE EAST LINE OF A TRACT OF LAND DESCRIBED IN BOOK 351 OF DEEDS, PAGE 192, THENCE N00°18'22"W, 1323.55 FEET ALONG THE EAST LINE OF SAID TRACT TO THE NORTHEAST CORNER OF SAID TRACT, THENCE S89°59'17"E, 1319.14 FEET ALONG THE NORTH LINE OF SAID NW1/4 TO THE POINT OF BEGINNING OF SAID TRACT.

SAID TRACT CONTAINS 39.97 ACRES OF LAND, MORE OR LESS.

TRACT 2

A TRACT OF LAND BEING THE NW1/4 OF SECTION 17, TOWNSHIP 55 NORTH, RANGE 85 WEST, 6TH P.M., SHERIDAN COUNTY, WYOMING, SAID TRACT OF LAND BEING MORE PARTICULARLY DESCRIBED AS FOLLOWS:

BEGINNING AT THE EAST QUARTER CORNER OF SAID SECTION 17, THENCE S00°03'42"W, 1321.74 FEET ALONG THE EAST LINE OF SAID NW1/4 TO A POINT, SAID POINT BEING THE NORTHEAST CORNER OF SAID NW1/4, THENCE S89°59'17"W, 1322.87 FEET ALONG THE SOUTH LINE OF SAID NW1/4 TO A POINT, SAID POINT BEING THE SOUTHWEST CORNER OF SAID NW1/4, THENCE S89°59'17"E, 1319.14 FEET ALONG THE NORTH LINE OF SAID NW1/4 TO THE POINT OF BEGINNING OF SAID TRACT.

SAID TRACT CONTAINS 40.30 ACRES OF LAND, MORE OR LESS.

TRACT 3

A TRACT OF LAND SITUATED IN THE SW1/4 & SE1/4 OF SECTION 17, TOWNSHIP 55 NORTH, RANGE 85 WEST, 6TH P.M., SHERIDAN COUNTY, WYOMING, SAID TRACT OF LAND BEING MORE PARTICULARLY DESCRIBED AS FOLLOWS:

BEGINNING AT THE NORTHEAST CORNER OF SAID SW1/4, THENCE S00°01'34"E, 1322.64 FEET ALONG THE EAST LINE OF SAID SW1/4 TO A POINT, SAID POINT BEING THE NORTHEAST CORNER OF SAID SW1/4, THENCE S00°01'34"E, 653.14 FEET ALONG THE EAST LINE OF SAID NW1/4 TO A POINT, THENCE S87°53'20"W, 355.98 FEET TO A POINT, THENCE THROUGH A CURVE TO THE LEFT, HAVING A RADIUS OF 286.48 FEET, A CENTRAL ANGLE OF 89°50'00", AN ARC LENGTH OF 42.08 FEET, A CHORD BEARING OF N33°28'16"W, AND A CHORD LENGTH OF 42.05 FEET TO A POINT, SAID POINT LYING ON THE SOUTH LINE OF A TRACT OF LAND DESCRIBED IN BOOK 351 OF DEEDS, PAGE 192, THENCE S89°59'17"E, 85.38 FEET ALONG SAID SOUTH LINE TO A POINT, SAID POINT BEING THE SOUTHWEST CORNER OF SAID TRACT, THENCE N00°18'22"W, 14.49 FEET ALONG THE EAST LINE OF SAID TRACT TO THE POINT OF BEGINNING OF SAID TRACT.

SAID TRACT CONTAINS 50.76 ACRES OF LAND, MORE OR LESS.

TRACT 4

A TRACT OF LAND SITUATED IN THE SW1/4 & SE1/4 OF SECTION 17 AND THE NW1/4 & NE1/4 OF SECTION 20, TOWNSHIP 55 NORTH, RANGE 85 WEST, 6TH P.M., SHERIDAN COUNTY, WYOMING, SAID TRACT OF LAND BEING MORE PARTICULARLY DESCRIBED AS FOLLOWS:

BEGINNING AT THE SOUTHWEST CORNER OF SAID SW1/4, THENCE N00°27'02"W, 772.95 FEET ALONG THE WEST LINE OF SAID SW1/4 OF SECTION 17 TO A POINT, SAID POINT BEING THE SOUTHWEST CORNER OF A TRACT OF LAND DESCRIBED IN BOOK 476 OF DEEDS, PAGE 339, THENCE N89°51'50"E, 55.87 FEET ALONG THE SOUTH LINE OF SAID TRACT DESCRIBED IN BOOK 476 OF DEEDS, PAGE 339 TO A POINT, THENCE S73°34'11"E, 90.15 FEET ALONG THE SOUTH LINE OF SAID TRACT DESCRIBED IN BOOK 476 OF DEEDS, PAGE 339 TO A POINT, THENCE N65°50'48"E, 105.69 FEET ALONG THE SOUTH LINE OF SAID TRACT DESCRIBED IN BOOK 476 OF DEEDS, PAGE 339 TO A POINT, THENCE N81°18'31"E, 500.00 FEET ALONG THE SOUTH LINE OF SAID TRACT DESCRIBED IN BOOK 476 OF DEEDS, PAGE 339 TO A POINT, THENCE N00°18'22"W, 109.23 FEET TO A POINT, SAID POINT LYING ON THE SOUTH LINE OF A TRACT OF LAND DESCRIBED IN BOOK 351 OF DEEDS, PAGE 192, THENCE S89°59'17"E, 85.38 FEET ALONG SAID SOUTH LINE TO A POINT, SAID POINT BEING THE SOUTHWEST CORNER OF SAID TRACT, THENCE N00°18'22"W, 14.49 FEET ALONG THE EAST LINE OF SAID TRACT TO THE POINT OF BEGINNING OF SAID TRACT.

SAID TRACT CONTAINS 35.00 ACRES OF LAND, MORE OR LESS.

TRACT 5

A TRACT OF LAND SITUATED IN THE SW1/4 & SE1/4 OF SECTION 17 AND THE NW1/4 & NE1/4 OF SECTION 20, TOWNSHIP 55 NORTH, RANGE 85 WEST, 6TH P.M., SHERIDAN COUNTY, WYOMING, SAID TRACT OF LAND BEING MORE PARTICULARLY DESCRIBED AS FOLLOWS:

BEGINNING AT THE EAST QUARTER CORNER OF SAID SECTION 17, THENCE S48°26'46"W, 3412.79 FEET TO THE POINT OF BEGINNING OF SAID TRACT, THENCE S37°04'45"E, 1249.75 FEET TO A POINT, THENCE N43°33'34"E, 102.07 FEET TO A POINT, THENCE N54°32'33"E, 870.10 FEET TO A POINT, THENCE N37°40'46"E, 1270.07 FEET TO A POINT, THENCE S47°50'00"E, 761.05 FEET TO A POINT, THENCE S00°01'34"E, 588.83 FEET TO A POINT, THENCE N37°40'46"E, 1270.07 FEET TO A POINT, THENCE N54°32'33"E, 870.10 FEET TO THE POINT OF BEGINNING OF SAID TRACT.

SAID TRACT CONTAINS 35.52 ACRES OF LAND, MORE OR LESS.

TRACT 6

A TRACT OF LAND SITUATED IN THE NW1/4 OF SECTION 20, TOWNSHIP 55 NORTH, RANGE 85 WEST, 6TH P.M., SHERIDAN COUNTY, WYOMING, SAID TRACT OF LAND BEING MORE PARTICULARLY DESCRIBED AS FOLLOWS:

BEGINNING AT THE SOUTHWEST CORNER OF SAID NW1/4, THENCE S89°51'20"W, 1240.10 FEET ALONG THE SOUTH LINE OF SAID NW1/4 TO A POINT, THENCE N43°33'34"E, 102.07 FEET TO A POINT, THENCE N43°33'34"E, 102.07 FEET TO A POINT, THENCE N54°32'33"E, 870.10 FEET TO A POINT, THENCE N37°40'46"E, 1270.07 FEET TO A POINT, THENCE S47°50'00"E, 761.05 FEET TO A POINT, THENCE S00°01'34"E, 588.83 FEET TO A POINT, THENCE N37°40'46"E, 1270.07 FEET TO A POINT, THENCE N54°32'33"E, 870.10 FEET TO THE POINT OF BEGINNING OF SAID TRACT.

SAID TRACT CONTAINS 36.00 ACRES OF LAND, MORE OR LESS.

TRACT 7

A TRACT OF LAND SITUATED IN THE NW1/4 & SE1/4 OF SECTION 20, TOWNSHIP 55 NORTH, RANGE 85 WEST, 6TH P.M., SHERIDAN COUNTY, WYOMING, SAID TRACT OF LAND BEING MORE PARTICULARLY DESCRIBED AS FOLLOWS:

BEGINNING AT THE SOUTHWEST CORNER OF THE SE1/4, THENCE S89°51'20"W, 474.62 FEET ALONG THE SOUTH LINE OF SAID SE1/4 TO A POINT, THENCE N43°33'34"E, 102.07 FEET TO A POINT, THENCE N43°33'34"E, 102.07 FEET TO A POINT, THENCE N54°32'33"E, 870.10 FEET TO A POINT, THENCE N37°40'46"E, 1270.07 FEET TO A POINT, THENCE S47°50'00"E, 761.05 FEET TO A POINT, THENCE S00°01'34"E, 588.83 FEET TO A POINT, THENCE N37°40'46"E, 1270.07 FEET TO A POINT, THENCE N54°32'33"E, 870.10 FEET TO THE POINT OF BEGINNING OF SAID TRACT.

SAID TRACT CONTAINS 40.92 ACRES OF LAND, MORE OR LESS.

TRACT 8

A TRACT OF LAND SITUATED IN THE NW1/4 OF SECTION 20, TOWNSHIP 55 NORTH, RANGE 85 WEST, 6TH P.M., SHERIDAN COUNTY, WYOMING, SAID TRACT OF LAND BEING MORE PARTICULARLY DESCRIBED AS FOLLOWS:

BEGINNING AT THE SOUTHWEST CORNER OF SAID NW1/4, THENCE N00°18'22"W, 1323.55 FEET ALONG THE WEST LINE OF SAID NW1/4 TO A POINT, THENCE N89°51'20"E, 81.91 FEET TO A POINT, THENCE N81°18'31"E, 102.07 FEET TO A POINT, THENCE S89°51'20"E, 1240.10 FEET TO A POINT, THENCE S37°04'45"E, 1249.75 FEET TO A POINT, THENCE N43°33'34"E, 102.07 FEET TO A POINT, THENCE N54°32'33"E, 870.10 FEET TO A POINT, THENCE N37°40'46"E, 1270.07 FEET TO A POINT, THENCE S47°50'00"E, 761.05 FEET TO A POINT, THENCE S00°01'34"E, 588.83 FEET TO A POINT, THENCE N37°40'46"E, 1270.07 FEET TO A POINT, THENCE N54°32'33"E, 870.10 FEET TO THE POINT OF BEGINNING OF SAID TRACT.

SAID TRACT CONTAINS 35.00 ACRES OF LAND, MORE OR LESS.

ACCESS AND UTILITY EASEMENT

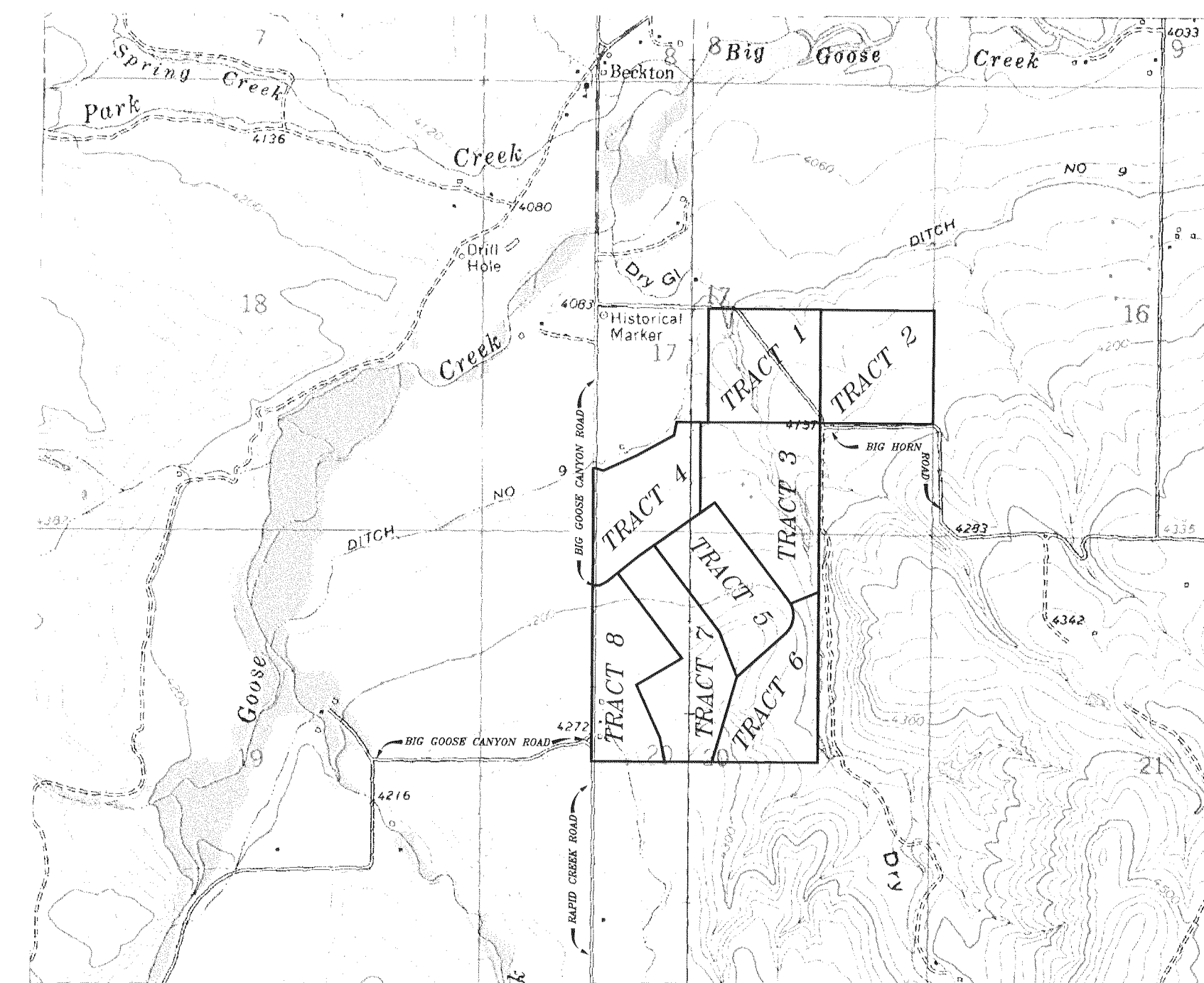
AN ACCESS AND UTILITY EASEMENT SIXTY (60.00) FEET WIDE, BEING THIRTY (30.00) FEET EACH SIDE OF THE FOLLOWING DESCRIBED CENTERLINE SITUATED IN THE SW1/4 OF SECTION 17, THE NW1/4 AND THE NW1/4 OF SECTION 20, TOWNSHIP 55 NORTH, RANGE 85 WEST, 6TH P.M., SHERIDAN COUNTY, WYOMING, SAID CENTERLINE BEING MORE PARTICULARLY DESCRIBED AS FOLLOWS:

BEGINNING AT THE NORTHWEST CORNER OF SAID SECTION 20 (MONUMENTED WITH A 3" BRASS CAP PER PLS 2615), THENCE S85°49'06"E, 1452.41 FEET TO THE POINT OF BEGINNING OF SAID EASEMENT (MONUMENTED WITH A 2" ALUMINUM CAP PER PLS 2615), SAID POINT LYING ON THE WEST LINE OF SAID NW1/4, THENCE N89°51'20"E, 81.91 FEET ALONG SAID CENTERLINE TO A POINT MONUMENTED WITH A 2" ALUMINUM CAP PER PLS 2615), THENCE N65°23'49"W, 2462.37 FEET TO A POINT MONUMENTED WITH A 2" ALUMINUM CAP PER PLS 2615), THENCE N54°32'33"E, 870.10 FEET ALONG SAID CENTERLINE TO A POINT MONUMENTED WITH A 2" ALUMINUM CAP PER PLS 2615), THENCE N37°40'46"E, 1270.07 FEET ALONG SAID CENTERLINE TO A POINT MONUMENTED WITH A 2" ALUMINUM CAP PER PLS 2615), THENCE S47°50'00"E, 761.05 FEET ALONG SAID CENTERLINE TO A POINT MONUMENTED WITH A 2" ALUMINUM CAP PER PLS 2615), THENCE S00°01'34"E, 588.83 FEET ALONG SAID CENTERLINE TO A POINT MONUMENTED WITH A 2" ALUMINUM CAP PER PLS 2615), THENCE N37°40'46"E, 1270.07 FEET ALONG SAID CENTERLINE TO A POINT MONUMENTED WITH A 2" ALUMINUM CAP PER PLS 2615), THENCE S47°50'00"E, 761.05 FEET ALONG SAID CENTERLINE TO THE POINT OF BEGINNING OF SAID EASEMENT, SAID POINT BEING N65°23'49"W, 2462.37 FEET FROM SAID EAST QUARTER CORNER OF SECTION 20.

ALSO, AN ACCESS AND UTILITY EASEMENT SITUATED IN THE SW1/4, SECTION 20, TOWNSHIP 55 NORTH, RANGE 85 WEST, 6TH P.M., SHERIDAN COUNTY, WYOMING, SAID EASEMENT BEING MORE PARTICULARLY DESCRIBED AS FOLLOWS:

BEGINNING AT THE EAST QUARTER CORNER OF SAID SECTION 20 (MONUMENTED WITH A 3" BRASS CAP PER PLS 2615), THENCE N65°23'49"W, 2462.37 FEET TO THE POINT OF BEGINNING OF SAID EASEMENT (MONUMENTED WITH A 2" ALUMINUM CAP PER PLS 2615), THENCE S89°51'20"E, 1240.10 FEET TO A POINT, THENCE N43°33'34"E, 102.07 FEET TO A POINT, THENCE N43°33'34"E, 102.07 FEET TO A POINT, THENCE N54°32'33"E, 870.10 FEET TO A POINT, THENCE N37°40'46"E, 1270.07 FEET TO A POINT, THENCE S47°50'00"E, 761.05 FEET TO A POINT, THENCE S00°01'34"E, 588.83 FEET TO A POINT, THENCE N37°40'46"E, 1270.07 FEET TO A POINT, THENCE N54°32'33"E, 870.10 FEET TO THE POINT OF BEGINNING OF SAID EASEMENT, LENGTHENING OR SHORTENING THE SIDE LINE OF SAID EASEMENT TO INTERSECT SAID BOUNDARY LINES.

SAID ACCESS AND UTILITY EASEMENTS CONTAIN 6.18 ACRES OF LAND, MORE OR LESS.

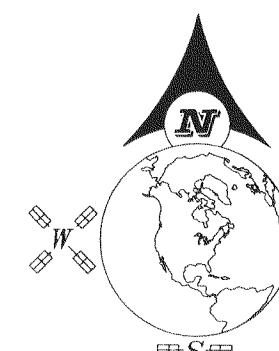


LEGEND:

SCALE: 1"=1200'

LEGEND:

- SET 2" ALUMINUM CAP PER PLS 2615
- ◆ SET 3-1/4" ALUMINUM CAP PER PLS 2615
- FOUND 3-1/4" ALUMINUM CAP PER PLS 2615
- FOUND 3" BRASS CAP PER PLS 2615
- FOUND 1-1/2" ALUMINUM CAP PER PLS 2615
- FOUND 1-1/2" ALUMINUM CAP PER PLS 102
- FOUND ALUMINUM CAP PER PLS 8308
- FOUND 2" IRON PIPE PER PLS 102
- CALCULATED: NOTHING FOUND/NOTHING SET
- W.C. WITNESS CORNER
- (R) RECORD
- (C) CALCULATED
- SECTION LINE
- INTERIOR SECTION LINE
- PROPERTY LINE
- ACCESS AND UTILITY EASEMENT (60' WIDE)
- RIGHT-OF-WAY LINE
- FENCELINE (2008)



SCALE: 1"=400'

BEARINGS ARE BASED ON THE WYOMING COORDINATE SYSTEM NAD 1983, EAST CENTRAL ZONE. DISTANCES ARE SURFACE.

GRAPHIC SCALE



(U.S. SURVEY FEET)

1 inch = 400 ft.

DATUM:

NAD 83(1983), NAVD 88 (U.S. SURVEY FEET)  
DATUM ADJUSTMENT FACTOR (DAF): 1.00025  
DIVIDE SURFACE COORDINATES BY DAF TO CALCULATE THE WYOMING COORDINATE SYSTEM NAD 1983, EAST CENTRAL ZONE, COORDINATES

CERTIFICATE OF RECORDER

STATE OF WYOMING ) ss  
COUNTY OF SHERIDAN )

THIS PLAT WAS FILED FOR RECORD IN THE OFFICE OF THE CLERK AND RECORDER AT 4:52 O'CLOCK P.M.,

THIS 3, DAY OF October, 2011, AND IS DULY RECORDED IN DRAWER A, PLAT NO. 414

FEES \$ 35.00

Eda Schunk Thompson  
COUNTY CLERK

STAMP RECEIVING NUMBER 2011-691112

SURVEYOR'S CERTIFICATE

STATE OF WYOMING ) ss  
COUNTY OF SHERIDAN )

I, RONALD W. PRESTFLOTT, A DULY REGISTERED LAND SURVEYOR IN THE STATE OF WYOMING, DO HEREBY CERTIFY THAT THIS PLAT TRULY AND CORRECTLY REPRESENTS THE RESULTS OF A SURVEY MADE BY ME OR UNDER MY DIRECT SUPERVISION.

RECORD OF SURVEY

CLIENT: P.A.B. WIDENER, JR.

LOCATION: N1/2SE1/4, SW1/4SE1/4, SE1/4SW1/4  
SECTION 17, W1/2NE1/4, E1/2NW1/4,  
SECTION 20, T55N, R85W, 6TH P.M.,  
SHERIDAN COUNTY, WYOMING

R. PRESTFLOTT  
SURVEYING

PO BOX 3082  
SHERIDAN, WY 82801  
307-622-7415  
FAX 674-5000

JN 28067  
DN 2008070  
FAR WIDENER RDS  
FF 150073-2007  
FEBRUARY 11, 2011

"SURVEY IS VALID ONLY IF PRINT HAS ORIGINAL SEAL AND SIGNATURE OF SURVEYOR SIGNED AND DATED"