

QUIT CLAIM DEED OF EASEMENT

THIS QUIT CLAIM DEED OF EASEMENT made this 13th day of September, 1991, by and between SHERIDAN ENTERPRISES, INC., a California corporation, (hereinafter called "Sheridan") and RANGE TELEPHONE COOPERATIVE, INC., a Montana corporation, (hereinafter called "Range Telephone");

W I T N E S S E T H :

For and in consideration of the sum of One Dollar (\$1.00) and other valuable consideration, paid by Range Telephone to Sheridan, receipt of which is hereby acknowledged, and the covenants and agreements hereinafter set forth, Sheridan, to the extent of its interest therein does hereby remise, release and quit claim unto Range Telephone, but subject to the limitations, conditions and stipulations hereinafter contained, a right-of-way easement for one buried telephone transmission line on and across that parcel of land described as follows:

TOWNSHIP 53 NORTH, RANGE 81 WEST, 6TH P.M.

Section 14: S1NW1

Section 15: S1NE1, NW1NE1, SE1NW1

(hereinafter the "parcels") situated in Sheridan County, in the State of Wyoming, and as shown on the map marked "Exhibit A" attached hereto and incorporated herein by reference, such easement being twenty (20) feet in width (such area being sometimes hereinafter referred to as the "Premises").

Together with the right to Range Telephone to construct, operate, maintain, inspect, protect, repair, and replace one such buried telephone transmission line (collectively referred to herein as the "facilities") on and across the above described parcel; and the right of ingress and egress in and over existing or future roads on said parcel for the limited purpose of exercising the above rights; however, Range Telephone shall be responsible for any damage to the land, any roads and other utilities located thereon caused by Range Telephone while engaged in the exercise of any right herein granted and Range Telephone shall repair and correct any damages to said lands, roads or utility lines caused by Range Telephone.

Sheridan excepts and reserves for itself, its successors and assigns, to the extent of its interest therein, all coal, coal by-products and substances found in association with coal; situated, lying or being in, on or under the Premises, or that may hereafter be found thereon, and further excepts and reserves the subterranean strata and voids (now existing or hereafter created) underlying said Premises, and all such further rights and privileges in, under and through said subterranean strata and voids as may be necessary, desirable or convenient to Sheridan, in exploring, mining, drilling, fracturing, extracting, removing, cleaning, processing and preparing for market, storing, handling, transporting, or disposing of minerals mined or extracted from the subject parcel and of other minerals owned or leased by Sheridan. Sheridan further excepts and reserves the right, and the right to permit, lease or license others: (i) to mine and remove all of the coal from the aforesaid described land, including the right to employ any deep or surface mining techniques or otherwise to mine, by any method used in the past or now in practice, or any new methods which may be developed in the future; and (ii) to transport men, materials, equipment, coal and other minerals through, on, over, in or under the Premises; and (iii) to otherwise use the said property for any and all purposes which Sheridan shall have the right to do and which do not unreasonably interfere with the enjoyment of the rights and privileges herein granted to Range Telephone.

It is understood and agreed between the parties that the granting of rights hereunder shall be subject to the following terms and conditions:

(1) MINING ACTIVITIES. Range Telephone acknowledges that future coal mining operations may be conducted on and underneath the premises and in the vicinity of the Premises. If it appears to either party hereto that such mining operations may adversely affect the facilities, such party shall provide written notice thereof to the other party. Thereafter, Range Telephone shall promptly relocate the facilities or a part thereof, at its expense, to another location on the aforesaid parcel provided by Sheridan.

(2) INDEMNIFICATION. Range Telephone agrees to indemnify and save harmless Sheridan, its contractors, subcontractors, sublessees, employees, agents, successors and assigns against and from any and all claims, demands, liability, costs and expenses (including reasonable attorney fees) or damages to other persons, or their property, or the property of Sheridan, caused by the acts or omissions of Range Telephone, its contractors, subcontractors or any other entity or person acting directly or indirectly on its behalf in the use and occupancy of the Premises, or in the construction, maintenance and operation of the facilities upon the lands subject to this right-of-way and easement.

(3) PERMITS/WAIVERS. Range Telephone agrees to execute any waivers, consents or other documents as may be deemed necessary by the applicable regulatory agency to facilitate the permitting and unhampered conduct of Sheridan's coal mining operations in the vicinity of or under the Premises or facilities.

(4) TERMINATION OF RIGHTS. In the event any substantial part, or parts, of the right-of-way hereby granted shall not be used for the purposes for which this grant is made, and if such nonuse shall continue for a period of one (1) year, all right, title and interest of Range Telephone in and to such part or parts of any said right-of-way so wholly not used for such one (1) year period, and all other rights granted and conferred with respect thereto, shall terminate. Range Telephone shall execute and deliver to Sheridan, or any successor in interest, any document, suitable for recording, necessary to document the termination of such rights.

(5) OWNERSHIP OF FACILITIES. Sheridan agrees that all poles, wires and other facilities, including all telephone equipment, installed on the above described premises at Range Telephone's expense, shall remain the property of Range Telephone removable at its option.

(6) RELOCATION OF EXISTING LINE. It is acknowledged that the Easement granted hereby is for the construction of a telephone transmission line that will replace an existing telephone transmission line located on the premises, for which Sheridan or its predecessor-in-title have previously granted an easement to Range Telephone. Range Telephone's rights in and to the previously granted easement are hereby terminated, to the extent that such existing telephone transmission line is relocated to the easement granted hereby. Range Telephone shall promptly provide Sheridan a recordable document surrendering and terminating Range Telephone's rights in those portions of the previously existing easement from which the telephone transmission line is relocated.

(7) ENTIRE AGREEMENT. This instrument contains all agreements expressed or implied between the parties hereto and shall inure to the benefit of and be binding upon their successors and assigns. All of Sheridan's rights and obligations shall inure to and be binding upon its contractors and sublessees coming upon the said parcel.

TO HAVE AND TO HOLD the same unto the said Range Telephone, its successors and assigns forever; subject, however, to all of the provisions and conditions hereinbefore contained.

IN WITNESS WHEREOF, the parties hereto have caused their respective corporate names to be signed hereto all as of the day and year first hereinbefore written.

SHERIDAN ENTERPRISES, INC.



BY: J. E. Davis

ITS: Vice President

RANGE TELEPHONE COOPERATIVE, INC.



BY: Robert Adams

ITS: President

STATE OF KENTUCKY

COUNTY OF FAYETTE

I, Freeland Davis, a Notary Public of said County, do certify that Jo Ellen Davis who signed the writing hereto annexed, bearing date the 13th day of September, 1991, for SHERIDAN ENTERPRISES, INC., a California corporation, has this day in my said county, before me, acknowledged the said writing to be the act and deed of said corporation.

My commission expires: May 16, 1993



Given under by hand this 13 day of September, 1991.

Freeland Davis
Notary Public

STATE OF MONTANA

COUNTY OF ROSEBUD

I, Timothy P. Green, a Notary Public of said County, do certify that Robert Adams who signed the writing hereto annexed, bearing date the 13th day of September, 1991, for RANGE TELEPHONE COOPERATIVE, INC. a Montana corporation, has this day in my said county, before me, acknowledged the said writing to be the act and deed of said corporation.

My commission expires: Feb. 21, 1993

Given under by hand this 13 day of September, 1991.



Timothy P. Green
Notary Public

Addendum to the right-of-way easement from Sheridan Enterprises Inc. for a buried telecommunications cable, according to Wyoming state law.

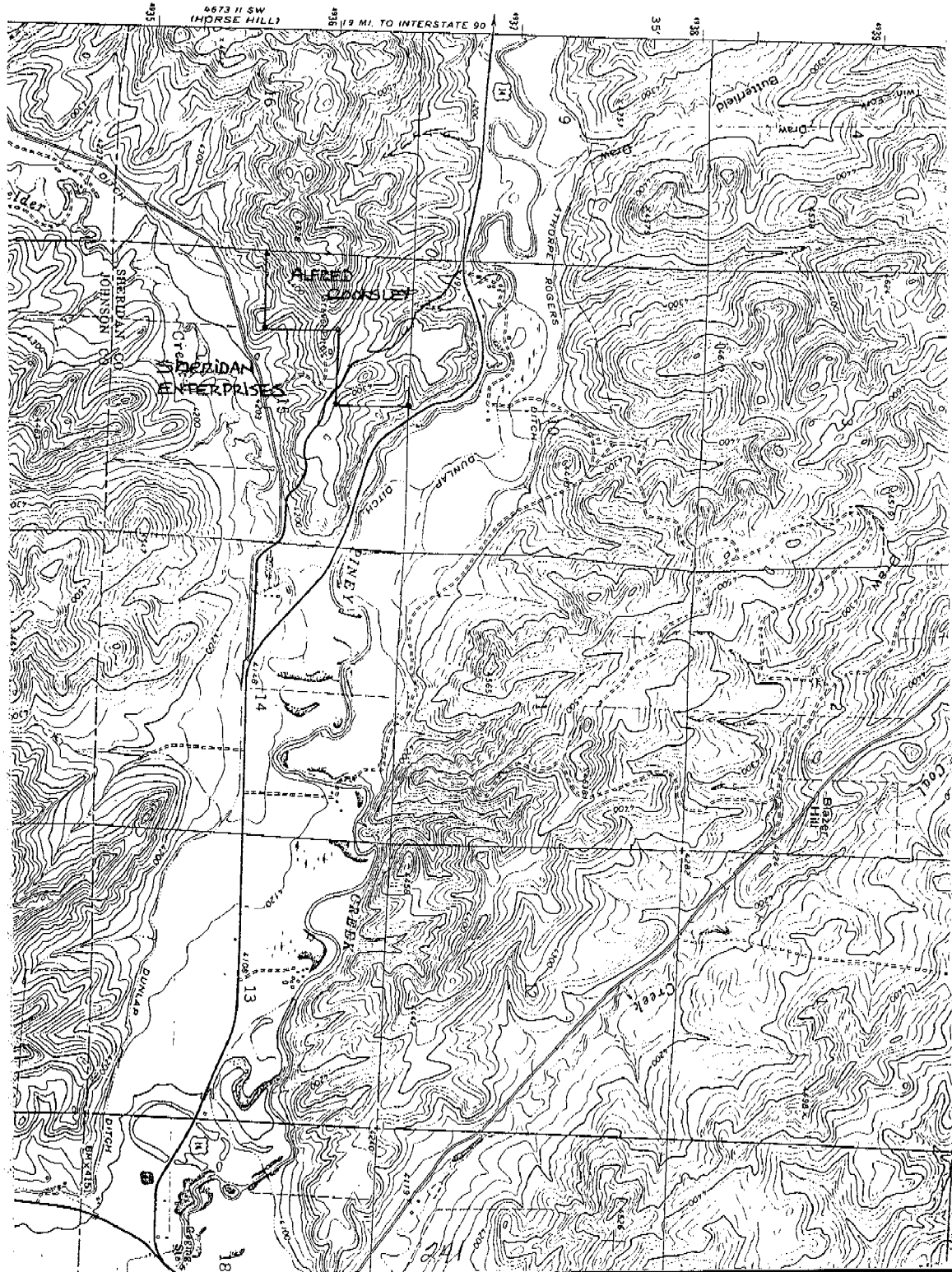
Commencing at the East 1/16 marker of the NW 1/4 of Sec 15 T53N R81W of the principal meridian, Wyoming, thence 90°00' West for a distance of 210 feet to the point of beginning of the center line of the buried telecommunications cable (EXHIBIT A) thence South 52°00' East for a distance of 310 feet, thence South 67°80' East for a distance of 720 feet, thence South 81°10' East for a distance of 230 feet, thence North 86°20' East for a distance of 460 feet, thence South 53°90' East for a distance of 480 feet, thence South 72°60' East for a distance of 270 feet, thence South 84°00' East a distance of 300 feet, thence South 66°10' East a distance of 450 feet to a point of exit from the SE $\frac{1}{4}$ SE $\frac{1}{4}$ NE $\frac{1}{4}$ of Section 15, and a point of entry into Section 14, Township 53N, Range 81W, 380 feet, North 0°00' of the West 1/4 marker, thence South 50°80' East a distance of 480 feet, thence 90°00' East a distance of 1710 feet, adjacent to, and North of Sheridan County road (Box Elder), No. 171, to exit the SW $\frac{1}{4}$ SE $\frac{1}{4}$ NW $\frac{1}{4}$ of Section 14 onto adjacent Highway 14 right-of-way.

Note: The information disclosed heron is provided without benefit of actual field survey and is derived from topographical map magnification (Exhibit A)

PROPOSED BURIED CABLE ROUTE

"EXHIBIT A"
Sheet 1 of 1

TOWNSHIP 53N
RANGE 81W



SYMBOLS

15. Sub. & No.

6. Potentials & No.

7. Tels. Poles

8. Poles

9. Fence

10. Warning Marker

11. Buried Signal

12. Aerial Poles

13. Buried Signal

14. Signal Mtg.

15. Poles

16. Tels. Poles

17. Poles

18. Par. Pole Mts.

19. Aerial Report

20. Dist.

21. Buried Poles

22. Buried Poles

23. C/A

24. Road Shoulder

25. Poles

26. Over 10 ft. of trench

27. Eaten Poles

28. Tels. Poles

29. Of Line

30. Gas Line

31. Water Line

32. Poles

33. Poles

34. Poles

35. Poles

36. Poles

37. Poles

38. Poles

39. Poles

40. Poles

41. Poles

42. Poles

43. Poles

44. Poles

45. Poles

46. Poles

47. Poles

48. Poles

49. Poles

50. Poles

51. Poles

52. Poles

53. Poles

54. Poles

55. Poles

56. Poles

57. Poles

58. Poles

59. Poles

60. Poles

61. Poles

62. Poles

63. Poles

64. Poles

65. Poles

66. Poles

67. Poles

68. Poles

69. Poles

70. Poles

71. Poles

72. Poles

73. Poles

74. Poles

75. Poles

76. Poles

77. Poles

78. Poles

79. Poles

80. Poles

81. Poles

82. Poles

83. Poles

84. Poles

85. Poles

86. Poles

87. Poles

88. Poles

89. Poles

90. Poles

91. Poles

92. Poles

93. Poles

94. Poles

95. Poles

96. Poles

97. Poles

98. Poles

99. Poles

100. Poles

101. Poles

102. Poles

103. Poles

104. Poles

105. Poles

106. Poles

107. Poles

108. Poles

109. Poles

110. Poles

111. Poles

112. Poles

113. Poles

114. Poles

115. Poles

116. Poles

117. Poles

118. Poles

119. Poles

120. Poles

121. Poles

122. Poles

123. Poles

124. Poles

125. Poles

126. Poles

127. Poles

128. Poles

129. Poles

130. Poles

131. Poles

132. Poles

133. Poles

134. Poles

135. Poles

136. Poles

137. Poles

138. Poles

139. Poles

140. Poles

141. Poles

142. Poles

143. Poles

144. Poles

145. Poles

146. Poles

147. Poles

148. Poles

149. Poles

150. Poles

151. Poles

152. Poles

153. Poles

154. Poles

155. Poles

156. Poles

157. Poles

158. Poles

159. Poles

160. Poles

161. Poles

162. Poles

163. Poles

164. Poles

165. Poles

166. Poles

167. Poles

168. Poles

169. Poles

170. Poles

171. Poles

172. Poles

173. Poles

174. Poles

175. Poles

176. Poles

177. Poles

178. Poles

179. Poles

180. Poles

181. Poles

182. Poles

183. Poles

184. Poles

185. Poles

186. Poles

187. Poles

188. Poles

189. Poles

190. Poles

191. Poles

192. Poles

193. Poles

194. Poles

195. Poles

196. Poles

197. Poles

198. Poles

199. Poles

200. Poles

201. Poles

202. Poles

203. Poles

204. Poles

205. Poles

206. Poles

207. Poles

208. Poles

209. Poles

210. Poles

211. Poles

212. Poles

213. Poles

214. Poles

215. Poles

216. Poles

217. Poles

218. Poles

219. Poles

220. Poles

221. Poles

222. Poles

223. Poles

224. Poles

225. Poles

226. Poles

227. Poles

228. Poles

229. Poles

230. Poles

231. Poles

232. Poles

233. Poles

234. Poles

235. Poles

236. Poles

237. Poles

238. Poles

239. Poles

240. Poles

241. Poles

242. Poles

243. Poles

244. Poles

245. Poles

246. Poles

247. Poles

248. Poles

249. Poles

250. Poles

251. Poles

252. Poles

253. Poles

254. Poles

255. Poles

256. Poles

257. Poles

258. Poles

259. Poles

260. Poles

261. Poles

262. Poles

263. Poles

264. Poles

265. Poles

266. Poles

267. Poles

268. Poles

269. Poles

270. Poles

271. Poles

272. Poles

273. Poles

274. Poles

275. Poles

276. Poles

277. Poles

278. Poles

279. Poles

280. Poles

281. Poles

282. Poles

283. Poles

284. Poles

285. Poles

286. Poles

287. Poles

288. Poles

289. Poles

290. Poles

291. Poles

292. Poles

293. Poles

294. Poles

295. Poles

296. Poles

297. Poles

298. Poles

299. Poles

300. Poles

301. Poles

302. Poles

303. Poles

304. Poles

305. Poles

306. Poles

307. Poles

308. Poles

309. Poles

310. Poles

311. Poles

312. Poles

313. Poles

314. Poles

315. Poles

316. Poles

317. Poles

318. Poles

319. Poles

320. Poles

321. Poles

322. Poles

323. Poles

324. Poles

325. Poles

326. Poles

327. Poles

328. Poles

329. Poles

330. Poles

331. Poles

332. Poles

333. Poles

334. Poles

335. Poles

336. Poles

337. Poles

338. Poles

339. Poles

340. Poles

341. Poles

342. Poles

343. Poles

344. Poles

345. Poles

346. Poles

347. Poles

348. Poles

349. Poles

350. Poles

351. Poles

352. Poles

353. Poles

354. Poles

355. Poles

356. Poles

357. Poles

358. Poles

359. Poles

360. Poles

361. Poles

362. Poles

363. Poles

364. Poles

365. Poles

366. Poles

367. Poles

368. Poles

369. Poles

370. Poles

371. Poles

372. Poles

373. Poles

374. Poles

375. Poles

376. Poles

377. Poles

378. Poles

379. Poles

380. Poles

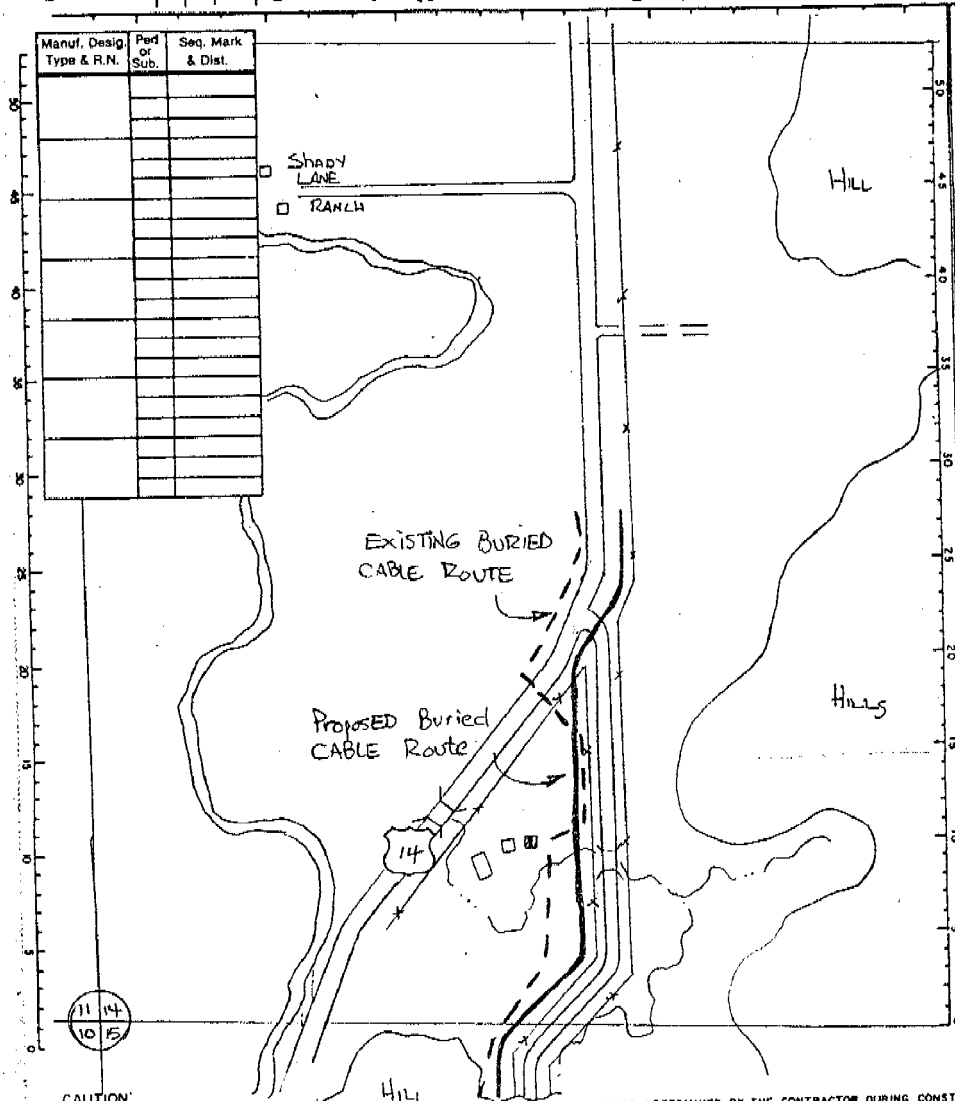
381. Poles

<

Stated by him
Date 8-14-91
Revised _____
Constructed _____

RANGE TELEPHONE COOPERATIVE, INC.
Exchange SE SHERIDAN Map KEY Work Order 10752
Tax Code Area 3-3300
Twp. 33N Rge. 81N Sec. 14 County SHERIDAN

Route No. CC
Sheet No. 32 of 43

[illegible]

CAUTION

CAUTION: KNOWN UTILITY LINES ARE SHOWN IN APPROX. LOCATIONS ONLY. ALL EXACT LOCATIONS TO BE DETERMINED BY THE CONTRACTOR DURING CONSTRUCTION.

[illegible]